

Undergraduate Prospectus | 2023

Brilliant



Queen Mary
University of London

**RUSSELL
GROUP**



**Diverse thinking creates
brilliant breakthroughs**

Contents

Find your future at Queen Mary

4

Joining our community	6	Our London campuses	18
Your support network	8	Where you'll live	22
Sports, clubs and volunteering opportunities	10	Innovative learning	24
Jamie's story	12		
Life as a student	14	Building your future with you	26
Where you'll be studying	16	Starting your career journey	28
		Study abroad	30

Discover your passion

32

New programmes	34	Environmental Science	106
Foundation programmes	36	Film Studies	110
Subject listings	38	Geography	116
Biological and Biomedical Sciences	38	History	122
Business and Management	44	Law	126
Chemical Sciences	52	Linguistics	132
Comparative Literature	56	Mathematical Science	138
Computer Science and Electronic Engineering	62	Medicine	144
Dentistry	68	Medicine in London	148
Drama	74	Medicine in Malta	150
Economics and Finance	78	Lynda's story	154
Engineering and Materials Science	90	Modern Languages and Cultures	156
English	100	Physics and Astronomy	168
		Politics and International Relations	176
		Psychology	182

Take your first steps

186

How to apply	188	Student finance, bursaries and support	192
Contextual admissions	190	International student admissions	194
Your offer based on individual circumstances		Harriet's story	196
Degree apprenticeships	191	Terms and conditions	198

Canary Wharf
East London's
financial district

An aerial photograph of a section of London, showing a mix of urban development and green spaces. The Regent's Canal flows through the lower left portion of the frame, bordered by lush trees and parks. To the right of the canal, there are several large, modern residential or commercial buildings with flat roofs and some glass facades. Further back, the density of the city increases with numerous smaller buildings and more greenery interspersed throughout. The overall lighting suggests a bright day, though the sky isn't clearly visible as it's mostly obscured by the city skyline.

Find your future at Queen Mary

>>>>>>>>>>>

Mile End Park
Alongside the
Regent's Canal

Mile End Park
Alongside the
Regent's Canal

Self-catered accommodation
Live, study and socialise on campus

Mile End Library
Open 24 hours

In this chapter:

004 **Joining our community**
012 **Life as a student**
026 **Opportunities at Queen Mary**

Joining our community

When you join Queen Mary, you'll become part of an inclusive, welcoming community. Whoever you are and whatever you're interested in, you'll find your place here and we will support you to achieve your goals.

We're committed to ensuring that students from all backgrounds with the potential to succeed with us are able to do so. Diverse perspectives are central to everything we do: we believe that great ideas can and should come from anywhere. You'll have access to a wealth of support and resources to help you adjust to university life – from managing your finances to improving your academic writing.

Of course, your student experience is about much more than your programme of study. It's about discovering new interests, meeting new friends and making memories. Alongside University support and facilities, Queen Mary Students' Union (QMSU)

offers a range of sporting and other societies where you can meet like-minded people. There are many opportunities to get involved with sport, whatever your ability or level of commitment. The Students' Union also organises fun social events throughout the academic year.

Your welfare is our top priority. We provide a full range of services to support your health and emotional wellbeing while at Queen Mary. We're also well equipped to ensure students with disabilities and specific learning differences get the right support. This means whatever your needs, you'll get the support you need to make the most of your university experience.



Queen Mary continues to prove that social inclusion and academic success are not mutually exclusive.

The Times and Sunday Times Good University Guide 2021, which recognised Queen Mary as the most inclusive Russell Group university.



Queen Mary University of London has been ranked as the country's top university for social mobility.

'Which university degrees are best for intergenerational mobility?', a report by the Institute for Fiscal Studies, in partnership with the Sutton Trust and the Department for Education (2021)



Graduate Centre
Mile End campus

Your support network

Our student and academic services are here to help you make the most of your time at Queen Mary. You can receive support for academic and course-related queries as well as health and personal issues.

Supporting your study Your Advisor

In your School or Institute, your Advisor is your first point of contact. Usually an academic member of staff, your Advisor's main role is to discuss academic progress, but they can also refer or recommend you to other support services.

Learning support

The Academic Skills Enhancement Service helps students from any taught programme and level of study to achieve academic success at Queen Mary. They support all aspects of study, including time management, critical thinking and academic writing. Workshops, one-to-one tutorials and drop-ins run throughout the year.

Language Centre

Our students have the opportunity to learn a language alongside their studies, either for credit or as an extracurricular activity. You can choose from

Arabic, Bengali, Chinese, French, German, Italian, Japanese, and Spanish.

You also have access to a range of extracurricular inessential modules in Academic and Professional Communication, which support your academic success and your employment prospects.

PASS

Our Peer-Assisted Study Support scheme (PASS) is a course-based mentoring scheme, where first-year students have the opportunity to connect with students in other years (mentors) to help settle into university life.

Supporting your wellbeing Advice and Counselling Service

Our Advice and Counselling Service offers a range of specialist, professional and confidential services to support students with financial, welfare, legal, emotional and mental

health and other psychological issues.

Disability and Dyslexia Service

Our Disability and Dyslexia Service offers support to all students with disabilities, including specific learning differences like dyslexia and mental health diagnoses, from application through to graduation.

QMSU academic advice

Our Students' Union's Academic Advice Service offers advice and representation on a number of academic welfare issues, including applications for extenuating circumstances and appeals.

Student Health Service

We have an NHS Student Health Service available on our Mile End campus. Students living in Queen Mary accommodation at Mile End or Whitechapel – and any students living in the borough of Tower Hamlets – can register with the service.

Learn more



Advice and
Counselling
Service




Disability
and Dyslexia
Service



Language
Centre



 **Mile End Library**
Mile End campus

Sports, clubs and volunteering opportunities

Whatever your interests, there's something for you at Queen Mary. With over 300 student societies and more than 60 sports clubs to choose from, there are always opportunities to try something new and meet like-minded friends.

Sport

Qmotion, on our Mile End campus, is the QMSU's sport and fitness centre. The gym is equipped with the latest facilities, holds a wide range of group exercise classes, and offers additional services such as personal training.

There are sport and exercise options for every student, and for every level of interest and ability. It's a great way to enrich your university experience and improve your physical and mental wellbeing. Options include:

- Community sport: gain qualifications, volunteer and make a difference in the community
- Get active: turn up and play on-campus recreational sport

- Campus games: compete in fun events and activities to win trophy points for your School
- Social leagues: fun and simple sport leagues on or near to campus
- Club sport: compete for the University in any of our 60+ clubs, with matches taking place at our sports ground in Chislehurst
- Elite Athlete Programme: get top-level athlete support to help you towards a dual career.

Clubs and societies

Joining a club or society is one of the best ways to meet friends and make the most of your university experience. From art to politics and student media, there's something for everyone – and if you can't find a club to suit

your interests, you can start your own.

Volunteering

Get involved in the local community by volunteering alongside other Queen Mary students. Choose from hundreds of one-off, short-term or ongoing opportunities, make new friends and gain valuable experience.

Representation

Queen Mary Students' Union is your voice as a member of the student body. The Union's mission is to improve students' lives through listening to your feedback and electing students to represent your views. Medicine and dentistry students also become members of Barts and The London Students' Association.

Learn more



Students'
Union



Barts and The
London Students'
Union

Coming from a smaller city, **Jamie** knew he wanted to experience student life in London.

As a campus-based Russell Group university, Queen Mary stood out from Jamie's other options: "A lot of London universities are spread around the city, but here everything's on your doorstep, which is brilliant."

After attending an offer holder day and experiencing Queen Mary's inclusive atmosphere, his mind was made up. "There are people here from all walks of life, and I knew it was the kind of place I wanted to be part of."

Although he worried at first about the transition to university, support from staff helped to build Jamie's confidence: "At every point, there's someone there to give you advice – whether that's your lecturers or your personal advisor.

You realise that everyone is there to help you, and it creates a really nice community feeling."

Extracurricular activities helped him to meet like-minded people and explore his own interests. "I joined the Linguistics Society, and found I shared a lot of common ground with people there. I had people to discuss my interests with, which was really exciting."

Jamie feels a campus-based experience in London has offered him the best of both worlds. "I wasn't expecting absolutely everyone I met to be so welcoming and friendly – I think that's quite a rare thing. It makes you feel comfortable, and less like you're in a strange place."



Jamie Rooke
BA English Language with
Linguistics (2nd year)

Life as a student



Ground Café
Mile End campus

Our campuses provide a welcoming and vibrant place to learn, with state-of-the-art facilities, exceptional teaching and a dynamic student life – all situated in one of world's most exciting, culturally rich and economically significant cities.

When it comes to world cities, London has it all: history, food, sport, culture, adventure – and countless career opportunities. East London is one of the most vibrant parts of the capital, attracting artists, creatives and tech entrepreneurs from around the world. It's international and bustling – a place where new ideas spring up and exciting things happen. It's also home to some of the best restaurants, nightlife and culture the city has to offer.

Getting around couldn't be easier: all our London campuses are well connected to the rest of the city, the UK, and further afield. From any campus, you're just a short tube journey away

from Oxford Circus, Leicester Square, King's Cross Station, and the rest of London's amazing sights. If you're going abroad, London has fantastic connections to the rest of the world.

What's more, London's cycleways make it easy and safe to cycle to, from, and between our campuses. Cycling is a fun and convenient way to explore the city, including the beautiful parks and canal towpaths close to campus. Cycle just over 10 minutes from our Mile End site and you'll reach the Queen Elizabeth Olympic Park, home to the London Stadium, with the leafy open spaces of the Lee Valley just beyond.



The campus feels like a real community, like a family. It's easy to make friends at Queen Mary – there's always something going on.

David Ajibade,
BSc Biomedical Sciences, 2021



London was ranked best city in the world to study in.

QS Best Student Cities, 2022

Where you'll be studying

East London is a vibrant place where rich history meets the cutting edge of culture and innovation.

From our Mile End and Whitechapel campuses, you're just a short walk from Shoreditch and Brick Lane, where you'll find amazing food from all over the world, nightlife and live music to suit any taste, and a wide array of independent shops and galleries.

When you need a break from the hustle and bustle, there's plenty of green space to enjoy. From our Mile End campus, a short walk along the tranquil Regent's Canal brings you to Victoria Park. It's one of inner London's largest green spaces and hosts a weekly food market, as well as music festivals in summer.

Excellent transport links mean you're never far from the beating heart of London. A short tube ride takes you into the City, London's financial hub and home to iconic landmarks like St. Paul's Cathedral. A few stops beyond is the West End, London's theatre district, where you'll find attractions like Chinatown and Piccadilly Circus.



Mile End campus
Alongside the
Regent's Canal

Whitechapel campus
Next to The Royal
London Hospital

The City of London
10 minutes by tube from
our Mile End campus

The London Eye
20 minutes by tube from
our Mile End campus

Victoria Park
A 20-minute walk from
our Mile End campus

Our London campuses



I worried I'd feel isolated, but Queen Mary completely dispelled that fear. Being at a campus university in London, you always run into somebody you know.

Kate Cornell,
BA History (2021)

Mile End campus

Our self-contained Mile End campus is home to most of our academic Schools and offers everything you need to live, relax and study – including shops, cafés, restaurants and a gym. Student accommodation is just a short walk from lecture theatres and our 24-hour library.

🚶 Mile End station

🚶 Stepney Green station



Explore the
virtual tour





Whitechapel campus

The Whitechapel campus is where most of our medical and dental students are based. It's also home to the Whitechapel Library, the Barts and The London Students' Association and The Royal London Hospital.

- 🚶 Mile End station
- 🚶 Stepney Green station



Explore the virtual tour



Charterhouse Square campus

Located near the Barbican, Charterhouse Square is home to some of our world-leading institutes' medical research headquarters. There is also a hall of residence for our medical students.

- 🚶 Barbican station
- 🚶 Farringdon station



Explore the virtual tour



Lincoln's Inn Fields campus

The Postgraduate Law Centre at Lincoln's Inn Fields is home to the Centre for Commercial Law Studies. It's located in Holborn, the heart of legal London, and is a base for LLM teaching and postgraduate research law students.

- 🚶 Holborn station
- 🚶 Chancery Lane station



Explore the virtual tour



West Smithfield campus

The West Smithfield campus in Farringdon is home to some of our postgraduate medical research students. It includes St Bartholomew's Hospital (Barts), the West Smithfield Medical Library, and some of our medical research facilities.

- 🚶 Barbican station
- 🚶 Farringdon station



Explore the virtual tour

Where you'll live

At Queen Mary, you benefit from the safety and community feel of campus life, with all the excitement of London right on your doorstep.

A welcoming community

Our campuses are communities in their own right, bringing together students from many subjects to study and socialise. Our sites in Mile End, Whitechapel, Charterhouse Square and West Smithfield offer almost 3,000 student bedrooms.

Our halls of residence offer a range of affordable options, either on campus or a short distance away. Residential fees start from around £150 per week for a non-ensuite room.

We guarantee accommodation to all new undergraduate and foundation students, as long as you meet the eligibility criteria on our Accommodation webpages. Whether you choose to live in halls with other new students or prefer an alternative housing option, our experienced team of housing advisers are here to help you make the right choice.

All of our campus accommodation is in self-catered flats, just a few minutes' walk from everything

you need to get the best out of your degree and your Queen Mary experience. You'll feel at home as part of our friendly community of staff and students.

A peaceful oasis in a busy city

Our self-contained Mile End campus is our largest, and offers everything you need to live, relax and study. There are two shops, four cafés, two restaurants, a bar, a gym, and a bookshop on site. Lecture theatres, laboratories and study spaces – including our extensive 24-hour library – are all a short walk away from halls of residence.

Our halls of residence have a friendly and relaxed atmosphere, surrounded by greenery and attractive outdoor spaces. At times, it's easy to forget that you're living in the heart of a bustling capital city. Campus accommodation is fun, safe and convenient – an affordable way to enjoy London life. It's also a great way to meet new people and create your own community of friends.

Learn more



Accommodation



Our
campuses



France House
Mile End campus



Innovative learning

You'll be learning alongside by academics who are leaders in their field and be given the tools you need to make your own important contributions.

Underpinned by cutting-edge research

Our innovative teaching is inspired by world-leading academic research. Our lecturers work at the cutting edge of their discipline, and this will directly benefit your learning experience – giving you the knowledge and the skills you need to succeed.

Building an inclusive curriculum, together

At Queen Mary, our mission is to be the most inclusive university of its kind, anywhere. When it comes to our teaching, this means empowering our students to voice their ideas and opinions and diversifying our curriculum to help you broaden your intellectual horizons.

We aim to acknowledge and address the inequalities in society by including diverse perspectives and identities in our teaching material – so our programmes are

exciting, challenging and relevant.

We co-create our education with our students, as we believe their input helps us ensure our programmes are student-centred and our learning environment is inclusive.

The best of physical and digital education

The best of physical and digital education We continually work with our students to improve our educational offer. The result is an experience that's tailored to you, bringing together the best of online and in-person education.

All small group teaching will be in person. Some lectures will be in person, and others may be online. All course material will be available online to enable you to learn at your own pace, revisiting material when you want to, while staying in close and easy contact with other students and our world-leading academic staff.



Building your future

As a Queen Mary student, from day one we help you plan for and build your future career – whatever and wherever that may be.

In an increasingly competitive job market, employers are looking for well-rounded graduates with transferable skills. Making the most of the experiences available to you while you're a student means you'll leave university in the best possible position.

At Queen Mary, you'll be given the chance to gain skills and experience that will set you apart – from internships and community volunteering to studying abroad. These opportunities will help you broaden your horizons, develop your skillset, and meet new people from all walks of life.

We're also here to help you decide what path to take after graduation, and give you the tools you need to pursue it. Our Careers and Enterprise team offers a wide range of advice, resources and events to help you find your ideal career, as well as practical help with applications and interview preparation.

If you'd like to start your own business or social enterprise, you'll be supported to develop your entrepreneurial mindset. Our high-impact developmental programmes and funding opportunities can help you turn your idea into reality.



Mile End Library
Mile End campus

Starting your career journey

From your first day at Queen Mary, we'll work with you to give you the guidance, tools and opportunities you need to take the next step and gain confidence. You'll leave us ready to face the future on your terms.

We'll tailor your development around your schedule and the things you want to do – whether that's an industry placement, a part-time job on or near campus, or improving your CV.

Your opportunities from day one

Finding the right career for you starts as soon as you join us. You'll have access to the advice you need, whether that's through a one-to-one appointment, a workshop led by our expert careers consultants, or our wealth of online information.

There are many ways to gain work experience – through initiatives like our Student Consultancy Project, industry placements,

paid internships or even starting your own business or social enterprise.

We'll also help you find a job to earn money alongside your studies. You can find flexible work either on- or off-campus through our in-house recruitment agency, and you'll always be paid at least the London Living Wage.

Work while you learn

Industrial or professional experience offers you amazing opportunities to gain crucial skills and make contacts. It's also a great way to put into practice the things you learn on your course and gain an insight into your chosen industry.

If you opt for a degree with a Year in Industry, this will normally take place after your second year of study. The year in industry is an opportunity for many, but not all, of our programmes – so do check your options before you apply.

Many Schools can help you find subject-specific placements, and our Careers and Enterprise team runs an award-winning work experience programme.

Our Mile End campus is less than 20 minutes from the City, Canary Wharf, the West End and Tech City, putting you in easy reach of some of the world's most exciting companies.

Learn more



93% of graduates were in work or further study **15 months** after graduation



£31,019 average salary five years after graduation



Careers and Enterprise



Blizard Institute
Whitechapel campus



Study abroad

Studying abroad is the adventure of a lifetime. Alongside amazing memories, it can give you increased confidence, invaluable life skills and the chance to learn – or improve – a foreign language.

Start planning your adventure

The majority of our programmes are available with a study abroad option, opening up the world to Queen Mary students.

Placements normally last a full year, though some Schools offer the option of studying abroad for the first semester of your second or third year. If you study abroad for a full year, you'll spend the third year of your degree abroad, then return to Queen Mary for your final year.

Queen Mary has exchange agreements with prestigious institutions in 37 countries across the globe, including Australia, Japan, Canada and the United States.

What's the benefit?

Studying abroad gives you the best of both worlds: a Queen Mary degree and the chance to live in another country, with full access to your exchange

institution's social, academic and cultural life.

By immersing yourself in another culture, you'll gain an entirely new, global outlook on life. It's also a chance to broaden your horizons, establish your independence, and meet new friends from all over the world. What's more, employers value the skills gained by taking part in overseas programmes. These include resilience, cross-cultural communication skills, and the ability to adapt to new environments.

Summer Schools and short programmes

At Queen Mary, you'll have the chance to spend the summer overseas at one of our partner institutions on a language, academic or cultural immersion programme. Our summer and short programmes take place outside the academic calendar and are a great option for students who want to have a short-term experience abroad.



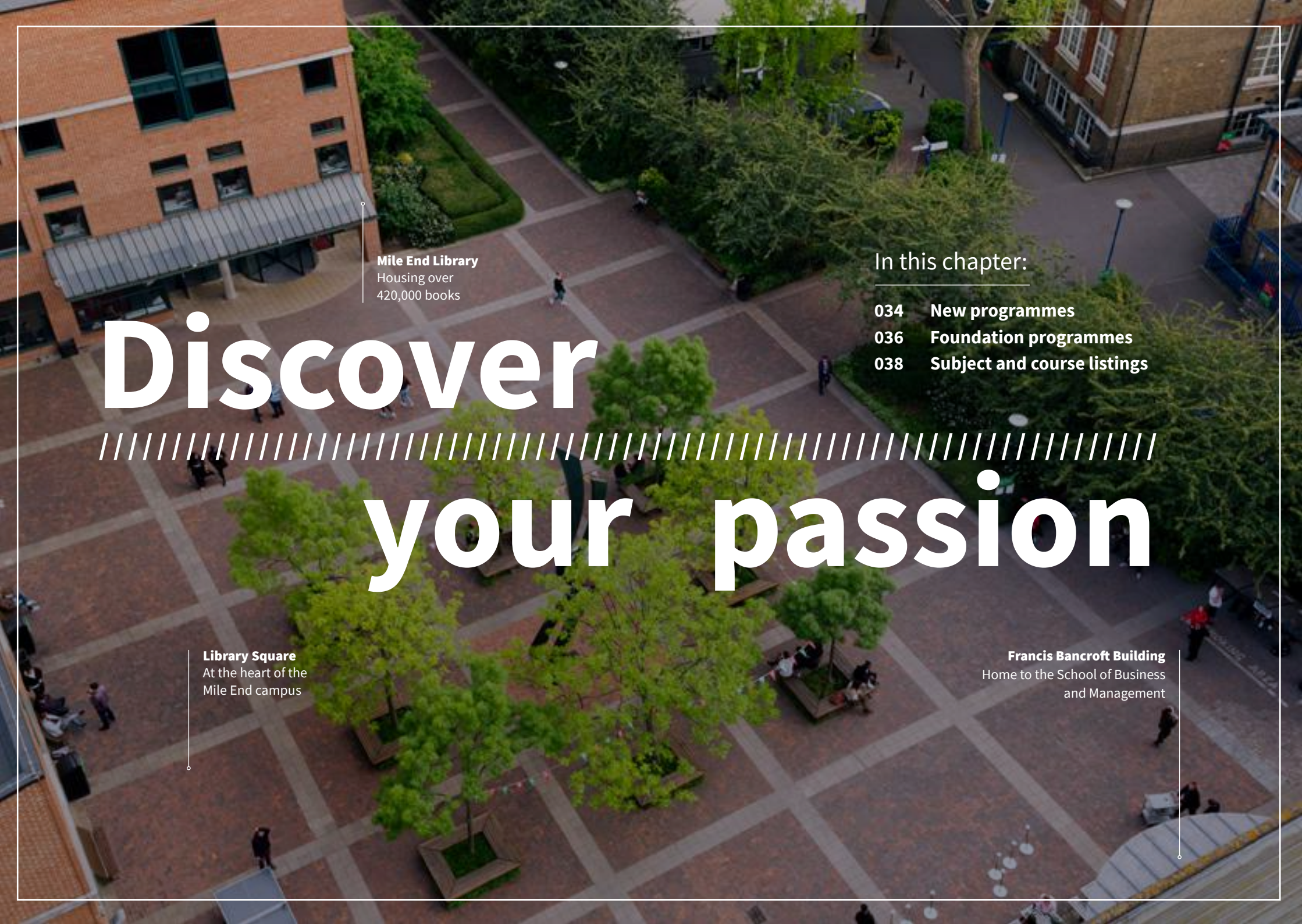
The two weeks I spent at Sichuan University's Summer School were just amazing. It was honestly the best opportunity that Queen Mary has offered me, allowing me to explore Chinese culture and its rich heritage.

Emily Ko, Sichuan Summer School (July 2019)

Learn more



Global
Opportunities



Mile End Library
Housing over
420,000 books

In this chapter:

- 034 New programmes
- 036 Foundation programmes
- 038 Subject and course listings

Discover

////////////////////////////////////

your passion

Library Square
At the heart of the
Mile End campus

Francis Bancroft Building
Home to the School of Business
and Management

New programmes

The most important and fascinating contemporary issues need to be examined through an interdisciplinary lens. Our two new programmes combine expertise from across academic Schools, so you'll learn how different subject areas interact and develop a well-rounded understanding of the world around us.

BA Global Development

Launched in 2022, this innovative, interdisciplinary programme allows you to examine the most pressing development challenges of our time – from health pandemics to social inequalities and climate change.

Combining expertise from across four Schools within the Faculty of Humanities and Social Sciences, you'll have the chance to explore aspects of geography alongside history, politics, language and culture.

The programme will equip you with a range of theoretical and methodological tools for understanding development challenges from a global, intersectional perspective and you will gain first-hand experience of debating development theory, conducting original fieldwork and engaging global policy actors.

BA Liberal Arts

Our BA in Liberal Arts is a unique, multidisciplinary programme providing students with the opportunity to choose from three distinct thematic areas: language and culture, global cultures and interactions: societies and cities. You'll engage with a range of subjects from different disciplinary perspectives, including the study of a foreign language during your first year. You'll also have the opportunity to work on related aspects of literature, culture, history, society and linguistics and discover elements of academic study from across the six Schools involved in the delivery of the programme.

The programme provides distinct themed tracks that facilitate greater flexibility in module choice and a broader basis than in degrees with single or joint honours subjects.

Learn more



About
BA Global
Development



About BA
Liberal Arts



Mile End Library
Mile End campus

Foundation programmes

Our foundation programmes are designed to equip ambitious students with the skills and experience they need to progress onto an undergraduate degree. The programmes are all taught by Queen Mary academics on our unique campuses in east London, home to students from over 170 nationalities.

The International Foundation Year offers an alternative route into Queen Mary's undergraduate programmes. Available in a wide range of subject areas, our foundation programmes give you the subject-specific knowledge and academic study skills required to progress onto an undergraduate degree at Queen Mary or elsewhere.

During your programme, you will have full access to all student facilities, including welfare, social and sports facilities and the library. We offer the International Foundation Year in the following subject areas: Business and Management, Comparative Literature, Drama, Economics and Finance, English, Film Studies, Geography, History, Linguistics, Modern Languages, Liberal Arts and Science and Engineering. We also offer integrated foundation programmes in Business and Management, Economics and Finance and Science and Engineering.

Please note if you have completed the majority of your secondary school education in the UK, you may not be eligible for entry to some of the programmes.

We provide academic and personal support to prepare you for undergraduate degree studies. The courses are designed to help you gain the study skills required to progress onto an undergraduate degree at Queen Mary or elsewhere.

International Foundation Year pathways **For international students:**

Humanities and Social Sciences

- Business and Management
- Economics and Finance
- English Literature, Film and Drama
- Geography and Development

Humanities and Social Science

- Law*
- Politics and International Relations

Science and Engineering

- Biological Science
- Chemical Science
- Electrical Engineering
- Engineering
- Mathematics
- Materials Science
- Physics
-

Medicine and Dentistry

- Certificate in Clinical Foundation Studies



Our alumni

I chose to stay at Queen Mary for my degree because I had one of the best years of my life doing the International Foundation Year here. Everyone was so friendly, and I just felt at home. The teachers got the very best out of me and allowed me to fulfil my potential.

John Tan Yu Choong,
BSc Business Management
(2020)



You can choose your bachelors degree from **100** Queen Mary programmes

80% of students achieved the grades to progress to their chosen Queen Mary degree (2019/20)

*Please note entry to the School of Law is unavailable if you have taken a qualification that could allow you to gain direct entry with the required grades.

Learn more



Our
foundation
programmes



International
Foundation
Year

Biological and Biomedical Sciences

Our programmes span the whole of the biological and biomedical sciences, from the study of whole organisms to genetics and molecular biology.

Our programmes

Our Biomedical Sciences, Medical Genetics, Neuroscience, and Pharmacology and Innovative Therapeutics programmes, co-taught between the School of Biological and Behavioural Sciences and the Faculty of Medicine and Dentistry, focus on the more medical aspects of the subjects.

If you're interested in ecology or conservation, our Zoology programme focuses on the underlying concepts that shape our understanding of animal diversity, including physiology, neurobiology and behaviour.

Those more interested in the molecular side of biological science can choose our programme in Biochemistry, which includes the study of

molecular biology and chemistry, respectively. Our Biology programme offers a strong grounding in biological sciences and combines the study of molecular biology and chemistry.

To develop real-world skills and put your learning into context, we offer a Year in Industry option on our Biochemistry programme and the opportunity to transfer onto this for our Neuroscience, Biomedical Sciences and Pharmacology and Innovative Therapeutics programmes. You can also get a global perspective and undertake a year abroad on all programmes.

What are we up to?

Our researchers have uncovered a key process in energy conversion in plants. This new knowledge could help scientists

improve the resilience of important crops and engineer bacteria that can produce useful compounds like pharmaceuticals more sustainably.

All cells, whether plant or animal, use a chemical called adenosine triphosphate (ATP) as their energy currency. Animals like humans make ATP through the process of respiration, whereas plants use photosynthesis to convert sunlight into ATP.

There is an intermediate step in the process in plant cells, where the light energy is used to create a 'proton gradient', which then helps create ATP. The proton gradient is like the height of the water in a hydroelectric dam – it is a form of 'potential energy', which then gets converted to the

chemical energy unit of ATP. However, until now how this proton gradient is created in the first place has been poorly understood. Dr Guy Hanke and his team have shed light on this by mapping the electron transfer process required for setting up a proton gradient, in a key part of the molecular machinery, photosynthetic complex 1 (PS-C1).

Dr Hanke said: "Ultimately, we hope that understanding how PS-C1 works will enable us, and other researchers, to manipulate photosynthetic bacteria for biotechnological purposes. This could include supporting the energetic demands necessary to produce high-value compounds such as pharmaceuticals in a more sustainable way."

Learn more



About the School



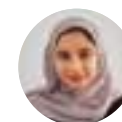
About our programmes



Our alumni

My time at Queen Mary laid a brilliant foundation for my future. I undertook my final year project at a biotechnology company, BioMoti, focusing on engineering cancer therapeutics. The soft skills I developed strengthened my successful application for the Science and Engineering Fast Stream for the Civil Service.

Tasqeen Ahmed,
Head of Strategy at the
Department of Health and Social
Care, BSc Biochemistry (2015)



Student's view

I really enjoy the flexibility of the course. In the first year, you explore a variety of subject areas ranging from biochemistry, genetics, physiology, ecology etc. This helped me figure out where my interests lay most. You also really get the chance to refine your lab skills during the programme.

Aneesah Chowdhury,
BSc Biology (3rd year)

Degree programmes

International Baccalaureate requirements:

HL = Higher Level, SL = Standard Level

English language requirements:

W = Writing, R = Reading, L = Listening, S = Speaking

Biochemistry

Award	UCAS course code	Type	Duration ¹	Entry requirements			
BSc (Hons)	C700	Single	3 years	A-level²	International Baccalaureate	GCSE	English language
URL	Year Abroad	Entry month	Related courses	AAB-ABB including Chemistry	34-35 points, 665-655 at HL including Chemistry	5 GCSE passes, English and Maths at C/4	6.5 overall, 6.0 in W, 5.5 in R, L, S
qmul.ac.uk/C700	C70Y	September	<ul style="list-style-type: none"> Year with Industrial Experience/Professional Placement - 3W45 Foundation - CCX2 				

Biochemistry

Award	UCAS course code	Type	Duration ¹	Entry requirements			
MSci (Hons)	C701	Single	4 years	A-level²	International Baccalaureate	GCSE	English language
URL	Year Abroad	Entry month	Related courses	AAB including Chemistry	35 points overall, 665 at HL including Chemistry	5 GCSE passes, English and Maths at C/4	6.5 overall, 6.0 in W, 5.5 in R, L, S
qmul.ac.uk/C701	C71Y	September					

Biology

Award	UCAS course code	Type	Duration ¹	Entry requirements			
BSc (Hons)	C100	Single	3 years	A-level²	International Baccalaureate	GCSE	English language
URL	Year Abroad	Entry month	Related courses	ABB including Biology	34 points overall, 655 at HL including Biology	5 GCSE passes, English and Maths at C/4	6.5 overall, 6.0 in W, 5.5 in R, L, S
qmul.ac.uk/C100	C10Y	September	Foundation - CCX2				

Biomedical Sciences

Award	UCAS course code	Type	Duration ¹	Entry requirements			
BSc (Hons)	B990	Single	3 years	A-level²	International Baccalaureate	GCSE	English language
URL	Year Abroad	Entry month	Related courses	AAB including Biology. A second science subject of Chemistry, Maths, Further Maths, Physics or Psychology is also required	35 points overall, 665 at HL including Biology. A second science subject at Higher Level of Chemistry, Maths, Further Maths, Physics or Psychology is also required	5 GCSE passes, English and Maths at C/4	6.5 overall, 6.0 in W, 5.5 in R, L, S
qmul.ac.uk/B990	B99Y	September	Foundation - CCX2				

Medical Genetics

Award	UCAS course code	Type	Duration ¹	Entry requirements			
BSc (Hons)	C431	Single	3 years	A-level²	International Baccalaureate	GCSE	English language
URL	Year Abroad	Entry month	Related courses	ABB including Biology			
qmul.ac.uk/C431	C43Y	September	Foundation - CCX2	34 points overall, 655 at HL including Biology			
				5 GCSE passes, English and Maths at C/4			
				6.5 overall, 6.0 in W, 5.5 in R, L, S			

Neuroscience

Award	UCAS course code	Type	Duration ¹	Entry requirements			
BSc (Hons)	B140	Single	3 years	A-level²	International Baccalaureate	GCSE	English language
URL	Year Abroad	Entry month	Related courses	ABB including Biology or Chemistry. A second science subject of Biology, Chemistry, Maths or Physics is also required			
qmul.ac.uk/B140	B14Y	September	Foundation - CCX2	34 points overall, 655 at HL including Biology and Chemistry			
				5 GCSE passes, English and Maths at C/4			
				6.5 overall, 6.0 in W, 5.5 in R, L, S			

Pharmacology and Innovative Therapeutics

Award	UCAS course code	Type	Duration ¹	Entry requirements			
BSc (Hons)	B211	Single	3 years	A-level²	International Baccalaureate	GCSE	English language
URL	Year Abroad	Entry month	Related courses	ABB including Biology or Chemistry. A second science subject of Biology, Chemistry, Maths or Physics is also required			
qmul.ac.uk/B211	B21Y	September	<ul style="list-style-type: none"> Year with Industrial Experience, B2Y1 Foundation - CCX2 	34 points overall, 655 at HL including Biology and Chemistry			
				5 GCSE passes, English and Maths at C/4			
				6.5 overall, 6.0 in W, 5.5 in R, L, S			

Zoology

Award	UCAS course code	Type	Duration ¹	Entry requirements			
BSc (Hons)	C300	Single	3 years	A-level²	International Baccalaureate	GCSE	English language
URL	Year Abroad	Entry month	Related courses	ABB including Biology			
qmul.ac.uk/C300	C30Y	September	Foundation - CCX2	34 points overall, 655 at HL including Biology			
				5 GCSE passes, English and Maths at C/4			
				6.5 overall, 6.0 in W, 5.5 in R, L, S			

*Programme subject to approval.

¹Programmes with an integrated foundation year, year abroad or industrial/professional experience option will be one year longer in duration. Please note that programmes that include a modern foreign language or the Language and Culture theme on the BA Liberal Arts will require a year abroad.

²General Studies and Critical Thinking A-levels are not accepted as part of our entry requirements.

This information is accurate at the time of publishing. Please see our website for the most up-to-date information.

Business and Management

At the School of Business and Management, our programmes are designed to create responsible future leaders. Many of our degrees are professionally accredited, giving you a head start in your chosen career.

Committed to social responsibility

Our teaching is underpinned by the values of social justice, sustainability and good governance. We invite our students to ask incisive questions, to challenge their assumptions, and to search for solutions to real-world business challenges.

You'll learn from internationally acclaimed experts in their fields, who teach students to think beyond textbooks, management fads and overly simplistic formulas for success. Our undergraduate programmes are diverse, covering accounting, finance, human resources, international business, marketing, management and social change.

What are we up to?

Our academics conduct cutting-edge research that has a real-world impact and reflects our School's core values. Dr Stella Ladi has acted as a public policy expert at the Ministry of the Interior and the Ministry of the Aegean, Greece, while Professor Colin Haslam is a technical advisor to the United Nations Environment Programme. Dr Elena Doldor's research focuses on strategies to improve gender and ethnic diversity on UK corporate boards and in senior leadership.

New programmes

To reflect the ever-changing business landscape, we are continually developing our portfolio of courses. Our new BSc Accountancy (Flying

Start) programme will elevate your career in business and accounting and put you on track to becoming an Institute of Chartered Accountants in England and Wales (ICAEW) Chartered Accountant. Paid work placements are built into the course, giving you the opportunity to apply the technical theory you learn in the classroom. Our new CMI-accredited BSc Management for Social Change course includes a work placement with a socially-responsible organisation, integrated into your studies. We have also introduced a Year in Industry option to two of our programmes:

- BSc Management with a Year in Industry
- BSc Marketing and Management with a Year in Industry

Where could business and management take you?

Our graduates are highly sought after by industry leaders, and our location close to the financial heart of the UK puts you in easy reach of some of the world's most exciting organisations. Recent graduates have gone on to work for Amazon, Deloitte, ITV, PwC and Salesforce.

Our alumni have also gone on to start their own charities: Bilal Bin Saqib (BSc Business Management, 2011) founded Tayaba, a non-profit organisation

that has changed the lives of over 20,000 people living in water-deprived communities.

Facilities and resources

The School has an excellent range of facilities and support. Our students can request one-to-one careers coaching and academic support, and have access to the latest industry-standard databases and software. The School is home to the University's Entrepreneurship Hub and houses the first student-led social impact venture capital fund in the UK.

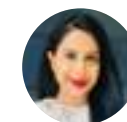
Learn more



About the
School



About our
programmes



Our
alumni

I chose the School of Business and Management because of its diversity and cultural environment. Queen Mary has a lot of students from different backgrounds and cultures. When I visited for an open day, I immediately knew that it was the right university for me.

Aniththa Ragunathan,
Internal Recruiter at Amazon,
BSc Business Management
(2019)



Student's
view

I have had the opportunity to get involved in a variety of extracurricular careers activities including SBM Consult, an in-house consultancy paid project for current students. This type of experience will take my CV to the next level, thanks to the School of Business and Management.

Saad Nabil Mustafiz,
BSc Accounting and
Management (3rd year)

Degree programmes

International Baccalaureate requirements:
English language requirements:

HL = Higher Level, SL = Standard Level
W = Writing, R = Reading, L = Listening, S = Speaking

Accountancy

Award	UCAS course code	Type	Duration ¹	Entry requirements			
BSc (Hons)	N403	Joint	4 years (paid work placements during years 2 and 3)	A-level²	International Baccalaureate	GCSE	English language
URL	Year Abroad	Entry month	Related courses	AAA. For full details of the entry requirements, please visit qmul.ac.uk/N403	36 points, 666 in HL, including 4 in SL Mathematics	5 GCSE passes, English at C/4 and Maths at A/7	6.5 overall including 5.5 in R, W, L and S.
qmul.ac.uk/N403	-	September					

Accounting and Finance

Award	UCAS course code	Type	Duration ¹	Entry requirements			
BSc (Hons)	N400	Single	3 years	A-level²	International Baccalaureate	GCSE	English language
URL	Year Abroad	Entry month	Related courses	AAA	36 points, 666 at HL, including 4 in SL Mathematics	5 GCSE passes, English at C/4 and Maths at A/7	6.5 overall, 5.5 in all components
qmul.ac.uk/N400	-	September	• Foundation - N401				

Accounting and Management

Award	UCAS course code	Type	Duration ¹	Entry requirements			
BSc (Hons)	4P20	Single	3 years	A-level²	International Baccalaureate	GCSE	English language
URL	Year Abroad	Entry month	Related courses	AAA	36 points, 666 at HL, including 4 in SL Mathematics	5 GCSE passes, English and Maths at C/4	6.5 overall, 5.5 in all components
qmul.ac.uk/4P20	-	September	• Foundation - 4P21				

Business Management

Award	UCAS course code	Type	Duration ¹	Entry requirements			
BSc (Hons)	NN12	Single	3 years	A-level²	International Baccalaureate	GCSE	English language
URL	Year Abroad	Entry month	Related courses	AAA	36 points, 666 at HL, including 4 in SL Mathematics	5 GCSE passes, English and Maths at B/5	6.5 overall, 5.5 in all components
qmul.ac.uk/NN12	-	September	• Foundation - NN13 • Year in Industry - NN16				

Business Management for Social Change

Award	UCAS course code	Type	Duration ¹	Entry requirements			
BSc (Hons)/Degree Apprenticeship	NN14	Single	4 years	A-level ²	International Baccalaureate	GCSE	English language
URL	Year Abroad	Entry month	Related courses				
qmul.ac.uk/NN14	-	September		AAA	36 points, 666 at HL, including 4 in SL Mathematics	5 GCSE passes, English and Maths at B/5	GCSE B/5 or accepted equivalent

Business Management for Social Change*

Award	UCAS course code	Type	Duration ¹	Entry requirements			
BSc (Hons)	TBC	Single	3 years	A-level ²	International Baccalaureate	GCSE	English language
URL	Year Abroad	Entry month	Related courses				
TBC	-	September		AAA	36 points, 666 at HL, including 4 in SL Mathematics	5 GCSE passes, English and Maths at B/5	6.5 overall, 5.5 in all components

Business Management with Chinese and Year Abroad

Award	UCAS course code	Type	Duration ¹	Entry requirements			
BSc (Hons)	N123	Major/Minor	4 years	A-level ²	International Baccalaureate	GCSE	English language
URL	Year Abroad	Entry month	Related courses				
qmul.ac.uk/N123	Yes	September		AAA	36 points, 666 at HL, including 4 in SL Mathematics	5 GCSE passes, English and Maths at grade C/4	6.5 overall, 5.5 in all components

Business with Law

Award	UCAS course code	Type	Duration ¹	Entry requirements			
BSc (Hons)	NM11	Major/Minor	3 years	A-level ²	International Baccalaureate	GCSE	English language
URL	Year Abroad	Entry month	Related courses				
qmul.ac.uk/NM11	-	September		AAA	36 points, 666 at HL, including 4 in SL Mathematics	5 GCSE passes, English and Maths at C/4	6.5 overall, 5.5 in all components

International Business with Year Abroad

Award	UCAS course code	Type	Duration ¹	Entry requirements			
BSc (Hons)	N120	Single	4 years	A-level ²	International Baccalaureate	GCSE	English language
URL	Year Abroad	Entry month	Related courses				
qmul.ac.uk/N120	Yes	September	Foundation - N121	AAA	36 points, 666 at HL, including 4 in SL Mathematics	5 GCSE passes, English at C/4 and Maths at A/7	6.5 overall, 5.5 in all components

Marketing and Management

Award	UCAS course code	Type	Duration ¹	Entry requirements			
BSc (Hons)	4G44	Single	3 years	A-level ²	International Baccalaureate	GCSE	English language
URL	Year Abroad	Entry month	Related courses				
qmul.ac.uk/4G44	-	September	<ul style="list-style-type: none">Foundation - 4G45Year in Industry - 4G46	AAA	36 points, 666 at HL, including 4 in SL Mathematics	5 GCSE passes, English and Maths at C/4	6.5 overall, 5.5 in all components

^{*}Programme subject to approval.

¹Programmes with an integrated foundation year, year abroad or industrial/professional experience option will be one year longer in duration. Please note that programmes that include a modern foreign language or the Language and Culture theme on the BA Liberal Arts will require a year abroad.

²General Studies and Critical Thinking A-levels are not accepted as part of our entry requirements.

This information is accurate at the time of publishing. Please see our website for the most up-to-date information.

Chemical Sciences

Queen Mary's Chemistry and Pharmaceutical Chemistry programmes are accredited by the Royal Society of Chemistry. You'll be taught by world-class experts in organic, inorganic, physical and computational chemistry.

Learn at the cutting edge

Chemistry is often thought of as the central science, bringing together mathematics, physics, biology and medicine. At Queen Mary, we're proud of our vibrant research culture and ensure that every new discovery informs our taught courses, with the latest findings shared in weekly seminars.

Chemistry and pharmaceutical chemistry are taught in the Joseph Priestley building, which recently benefitted from a £5.2m investment in a new undergraduate teaching lab. The design itself is similar to commercial laboratories, preparing students for the next stage of their careers.

Because of our Royal Society of Chemistry accreditation,

Chemistry and Pharmaceutical Chemistry graduates gain Associate Member of RSC status. Chemistry and Pharmaceutical Chemistry are both available with an MSci, Year in Industry/Research or Year Abroad option.

Real-world experience

A Year in Industry offers students work experience in a real-world setting and a fantastic chance to practise and hone their skills. Aneesah Mukadam and Nishma Thakor studied BSc Chemistry with Year in Industry, graduating in 2021. They found placements with GlaxoSmithKline (GSK) with support from their supervisors. Aneesah, who would like to go into research, worked in the Medicinal Chemistry department: "During my industrial placement with GSK, I worked on early-stage drug discovery projects, where

my role entailed devising and carrying out effective synthetic routes to deliver target molecules.

Throughout my placement, I had the chance to learn a wide range of laboratory techniques and gain a deeper understanding of the drug discovery process and the pharmaceutical industry. My year at GSK has been fantastic. It's not only helped me develop as a chemist, but also as a person and it's allowed me to meet many incredible people."

Nishma, meanwhile, worked in the pharmaceutical supply chain: "I was fortunate to be a part of the micronising team, where I carried out various analytical testing techniques on both commercial and stability batches of micronised active pharmaceutical ingredients.

The programme has given me the opportunity to develop a variety of key skills and competencies and demonstrate them in the working environment. It's been a brilliant year of developing both personally and professionally."

Where could chemical sciences take you?

Our graduates often work in

a range of sectors, including media, technology, finance, and clinical and laboratory work. Many also move on to postgraduate study.

Recent employers have included GlaxoSmithKline, Boots UK, Hammersmith Medicines Research, St George's University Hospitals NHS Foundation Trust and KPMG.

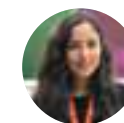
Learn more



About our programmes



Take a virtual tour of our building



Our alumni

Studying chemistry has made me a very detail-orientated person as well as giving me analytical skills and the ability to sort through information very systematically. These are all essential transferable skills that all employers look for.

Zahra Arjomand Nia, Technology Consultant at Capgemini, BSc Pharmaceutical Chemistry with a Year in Industry/Research (2019)



Student's view

Having such a diverse cohort of chemistry students and being taught in the newly built labs has been the best part of my experience at Queen Mary. I have also had the opportunity to take part in a paid consultancy programme hosted by Queen Mary, all in my first year.

Tahmina Ali, BSc Pharmaceutical Chemistry (3rd year)

Degree programmes

International Baccalaureate requirements: HL = Higher Level, SL = Standard Level
English language requirements: W = Writing, R = Reading, L = Listening, S = Speaking

Chemistry

Award	UCAS course code	Type	Duration ¹	Entry requirements			
BSc (Hons)	F100	Single	3 years	A-level²	International Baccalaureate	GCSE	English language
URL	Year Abroad	Entry month	Related courses	AAB-ABB including Chemistry	34-35 points overall, 665-655 at HL including Chemistry	5 GCSE passes, English and Maths at C/4	6.5 overall, 6.0 in W, 5.5 in R, L, S
qmul.ac.uk/F100	F10Y	September	<ul style="list-style-type: none"> Year with Industrial Experience/ Professional Placement - 9A32 Foundation - FFX2 				

Chemistry

Award	UCAS course code	Type	Duration ¹	Entry requirements			
MSci (Hons)	F103	Single	4 years	A-level²	International Baccalaureate	GCSE	English language
URL	Year Abroad	Entry month	Related courses	AAB including Chemistry	35 points overall, 665 at HL including Chemistry	5 GCSE passes, English and Maths at C/4	6.5 overall, 6.0 in W, 5.5 in R, L, S
qmul.ac.uk/F103	F13Y	September					

Pharmaceutical Chemistry

Award	UCAS course code	Type	Duration ¹	Entry requirements			
BSc (Hons)	F154	Single	3 years	A-level²	International Baccalaureate	GCSE	English language
URL	Year Abroad	Entry month	Related courses	AAB-ABB including Chemistry	34-35 points, 665-655 at HL including Chemistry	5 GCSE passes, English and Maths at C/4	6.5 overall, 6.0 in W, 5.5 in R, L, S
qmul.ac.uk/F154	F15Y	September	<ul style="list-style-type: none"> Year with Industrial Experience/ Professional Placement - 2L22 Foundation - FFX2 				

Pharmaceutical Chemistry

Award	UCAS course code	Type	Duration ¹	Entry requirements			
MSci (Hons)	F152	Single	4 years	A-level²	International Baccalaureate	GCSE	English language
URL	Year Abroad	Entry month	Related courses	AAB including Chemistry	35 points overall, 665 at HL including Chemistry	5 GCSE passes, English and Maths at C/4	6.5 overall, 6.0 in W, 5.5 in R, L, S
qmul.ac.uk/F152	F12Y	September					

*Programme subject to approval.

¹Programmes with an integrated foundation year, year abroad or industrial/professional experience option will be one year longer in duration. Please note that programmes that include a modern foreign language or the Language and Culture theme on the BA Liberal Arts will require a year abroad.

²General Studies and Critical Thinking A-levels are not accepted as part of our entry requirements.

This information is accurate at the time of publishing. Please see our website for the most up-to-date information.

Comparative Literature

At Queen Mary, you'll study literature in translation from a huge variety of countries, cultures and periods, relating to everything from history, psychology and philosophy to painting, film and music.

Expand your horizons

The comparatist George Steiner once said, "comparison enables us to see more", and that's exactly what our programmes do. Studying comparative literature expands your literary and cultural horizons; it also helps you to develop an impressive set of transferable skills, including analytical ability, highly sophisticated reading and presentation skills, and the ability to put things in context.

Our choice of modules lets you discover modern fairy tales, postmodern novels and short stories from around the world. You might choose to explore movements such as romanticism or modernism, as well as themes ranging from madness to migration to adaptation.

In addition to the wide range of options within our School, you can study modules in modern languages, film studies and linguistics, or modules from other humanities.

Academic expertise

Our staff engage in interdisciplinary research around the world, covering different periods while sharing a focus on world literature. The intellectual profile of the Department is broad and dynamic, and our academic research interests are wide-ranging.

We enjoy exciting collaborations across Queen Mary and with external organisations, and our staff engage with academic, cultural and societal activities as part of their teaching and research. Our academics' research addresses some of the most

pressing issues faced by our society, in the fields of ecocriticism, disaster studies and post-colonialism in the era of globalisation and climate change, alongside the related political, social, cultural and regional vulnerabilities arising from these.

Joint programmes

Comparative literature can be studied jointly with a modern language (French, German, Hispanic Studies or Russian), or with linguistics or film studies. These combinations allow you to approach similar topics from two distinct angles, using the knowledge and skills from one subject to deepen your appreciation of the other.

Language programmes include a compulsory Year Abroad, and all

comparative literature students may choose to take a Year Abroad as part of their degree.

Where could comparative literature take you?

Our graduates go on to enjoy a wide variety of careers. Some apply their degree knowledge directly by working in the arts, media or PR; others take up roles in editing and copywriting,

publishing, banking, corporate services, governance assistance, and event management.

Our graduates' writing skills are also highly sought after in many other sectors, such as journalism, advertising and marketing, and some enter professions such as law (via the Solicitors Qualifying Examination) and teaching.

Learn more



About our
School



About the
Department



About the
subject



Our
alumni

I chose to study Comparative Literature because I didn't want to be limited in what areas I could study. I really like that I've been able to take modules in anything from German thought to queer theory to climate change – there really are no limits!

Sarah Garrod,
Graduate Student and Teaching Assistant at the University of Kentucky, BA Comparative Literature with a Year Abroad (2021)



Student's
view

Studying my degree has helped me develop a valuable skillset such as critical thinking, creativity, and cultural intelligence; therefore, I'm certain that my degree has allowed me to become more equipped to reach my future career goals.

Sarah Ngana,
BA Comparative Literature and Film Studies (final year)

Degree programmes

International Baccalaureate requirements: HL = Higher Level, SL = Standard Level
English language requirements: W = Writing, R = Reading, L = Listening, S = Speaking

Comparative Literature

Award	UCAS course code	Type	Duration ¹	Entry requirements			
BA (Hons)	Q200	Single	3 years	A-level²	International Baccalaureate	GCSE	English language
URL	Year Abroad	Entry month	Related courses	BBB, including at least one essay based subject in humanities or social sciences	30 points, 555 at HL including an essay-based humanities or social sciences subject	5 GCSE passes, English at C/4	7.0 overall, 7.0 in W, 5.5 in R, L, S
qmul.ac.uk/Q200	Q201	September					

Comparative Literature and Film Studies

Award	UCAS course code	Type	Duration ¹	Entry requirements			
BA (Hons)	QP23	Joint	3 years	A-level²	International Baccalaureate	GCSE	English language
URL	Year Abroad	Entry month	Related courses	ABB, including at least one essay-based subject in humanities or social sciences	32 points, 655 at HL including an essay-based humanities or social sciences subject	5 GCSE passes, English at C/4	7.0 overall, 7.0 in W, 5.5 in R, L, S
qmul.ac.uk/QP23	QP2Y	September					

Comparative Literature and Linguistics

Award	UCAS course code	Type	Duration ¹	Entry requirements			
BA (Hons)	QQ21	Joint	3 years	A-level²	International Baccalaureate	GCSE	English language
URL	Year Abroad	Entry month	Related courses	ABB, including at least one essay-based subject in humanities or social sciences	32 points, 655 at HL including an essay-based humanities or social sciences subject	5 GCSE passes, English at C/4	7.0 overall, 7.0 in W, 5.5 in R, L, S
qmul.ac.uk/QQ21	QQ2Y	September					

French and Comparative Literature

Award	UCAS course code	Type	Duration ¹	Entry requirements			
BA (Hons)	RQ12	Joint	4 years	A-level²	International Baccalaureate	GCSE	English language
URL	Year Abroad	Entry month	Related courses	BBB, including at least one essay-based subject in humanities or social sciences	30 points, 555 at HL including an essay-based humanities or social sciences subject	5 GCSE passes, English at C/4	7.0 overall, 7.0 in W, 5.5 in R, L, S
qmul.ac.uk/RQ12	Yes	September					

German and Comparative Literature

Award	UCAS course code	Type	Duration ¹	Entry requirements			
BA (Hons)	QR22	Joint	4 years	A-level²	International Baccalaureate	GCSE	English language
URL	Year Abroad	Entry month	Related courses	BBB, including at least one essay-based subject in humanities or social sciences	30 points, 555 at HL including an essay-based humanities or social sciences subject	5 GCSE passes, English at C/4	7.0 overall, 7.0 in W, 5.5 in R, L, S
qmul.ac.uk/QR22	Yes	September					

Hispanic Studies and Comparative Literature

Award	UCAS course code	Type	Duration ¹	Entry requirements			
BA (Hons)	QR24	Joint	4 years	A-level²	International Baccalaureate	GCSE	English language
URL	Year Abroad	Entry month	Related courses	BBB, including at least one essay-based subject in humanities or social sciences	30 points, 555 at HL including an essay-based humanities or social sciences subject	5 GCSE passes, English at C/4	7.0 overall, 7.0 in W, 5.5 in R, L, S
qmul.ac.uk/QR24	Yes	September					

Liberal Arts

Award	UCAS course code	Type	Duration ¹	Entry requirements			
BA (Hons)	V901	Joint	3 years	A-level²	International Baccalaureate	GCSE	English language
URL	Year Abroad	Entry month	Related courses	BBB, including at least one essay-based subject in humanities or social sciences	30 points, 555 at HL including an essay-based humanities or social sciences subject	5 GCSE passes, English at C/4	7.0 overall, 7.0 in W, 5.5 in R, L, S
qmul.ac.uk/V901	V902	September	Year with Industrial Experience/ Professional Placement - V903				

Russian and Comparative Literature

Award	UCAS course code	Type	Duration ¹	Entry requirements			
BA (Hons)	QR72	Joint	4 years	A-level²	International Baccalaureate	GCSE	English language
URL	Year Abroad	Entry month	Related courses	BBB, including at least one essay-based subject in humanities or social sciences	30 points, 555 at HL including an essay-based humanities or social sciences subject	5 GCSE passes, English at C/4	7.0 overall, 7.0 in W, 5.5 in R, L, S
qmul.ac.uk/QR72	Yes	September					

*Programme subject to approval.

¹Programmes with an integrated foundation year, year abroad or industrial/professional experience option will be one year longer in duration. Please note that programmes that include a modern foreign language or the Language and Culture theme on the BA Liberal Arts will require a year abroad.

²General Studies and Critical Thinking A-levels are not accepted as part of our entry requirements.

This information is accurate at the time of publishing. Please see our website for the most up-to-date information.

Computer Science and Electronic Engineering

Our programmes are shaped by our outstanding industry connections, ensuring you graduate with a degree that's relevant to employers. We're helping to define a rapidly evolving industry and support our students to become the industry leaders of tomorrow.

Our programmes

Our cutting-edge research feeds into our degree programmes, which are taught using tools and techniques that will prepare you for your career. Our partnerships with employers shape our research and teaching, and many of our degrees are professionally accredited.

All of our degrees offer a wide range of modules and dedicated student support. You'll study a broad curriculum to equip you with a solid grounding in your discipline. In your final year, you'll apply your knowledge, skills and experience to a large-scale piece of work specially designed to give you an insight into the world of research and industry.

Our academics are discovering new ways to use technology

and push the boundaries of innovation. We're well known for our pioneering research, facilities and educators, and pride ourselves on our world-class projects.

What are we up to?

Tech plays a key role in solving everyday problems and improving our quality of life. Mental illness affects one in four, and the NHS deals with over a million patients every 36 hours. Communication failures are common and frequently critical.

Pat Healey, Professor of Human Interaction and Turing Fellow, worked with researchers in the Faculty of Medicine and Dentistry to develop an app called DIALOG. The app is designed to improve communication between clinicians and patients during mental healthcare, and is used

in 19 countries, including the UK. DIALOG has improved the quality of health communication and reportedly reduced treatment costs by approximately £1,500 a year per patient.

In collaboration with IESO Digital Health, Professor Healey and his team have further developed their methods and applied them to cognitive behavioural therapy for depression and anxiety, now available via the NHS.

Joint programmes

You can choose to specialise across two disciplines with our joint programmes, Computer Science and Mathematics and Computer Science with Management (ITMB).

All of our programmes also include an optional Year in Industry –

a fantastic chance to gain experience and make contacts – or a Year Abroad with one of our partner institutions.

Where could a tech degree take you?

One of the most exciting parts of computer science or electronic engineering is the growth of new

fields and sectors you might not have heard of just a few years ago.

Our students graduate with a strong skillset, ready to adapt to changes and opportunities. Recent graduates have gone on to work for Google, IBM, TikTok, the NHS, eBay and Goldman Sachs, or moved into research.

Learn more



About our programmes



Take a virtual tour of our building



Our alumni

A computer science or electronic engineering graduate is more valuable than gold to employers. The skills you gain at university can be applied in any job. I can confidently say that the knowledge and skills gained from my degree have given me a step up when applying for roles.

Hassan Abdel Rahman,
Subject Matter Expert at
YouTube Go-To-Market &
Support Solutions, BEng
Electrical and Electronic
Engineering (2015)



Our alumni

When I visited Queen Mary, I knew it was the right place for me. I enjoy being challenged and love that a lot of modules are based on solving real-life problems. I like that we're encouraged to build technology that will make others' lives easier and positively impact society.

Chloe Bugeja,
Trainee Teacher,
BSc Computer Science
(2021)

Degree programmes

International Baccalaureate requirements:

HL = Higher Level, SL = Standard Level

English language requirements:

W = Writing, R = Reading, L = Listening, S = Speaking

Computer Science

Award	UCAS course code	Type	Duration ¹	Entry requirements			
BSc (Hons)	G400	Single	3 years	A-level²	International Baccalaureate	GCSE	English language
URL	Year Abroad	Entry month	Related courses	AAB. Alternatively, ABB including either Mathematics or Computer Science	34 points, 665 at HL. Alternatively, 32 points overall, 655 at HL including Mathematics or Computer Science	5 GCSE passes, English at C/4 and Maths at B/5	6.0 overall, 5.5 in all components
qmul.ac.uk/G400	G40Y	September	Year with Industrial Experience/Professional Placement - G402				

Computer Science

Award	UCAS course code	Type	Duration ¹	Entry requirements			
MSci (Hons)	G401	Single	4 years	A-level²	International Baccalaureate	GCSE	English language
URL	Year Abroad	Entry month	Related courses	AAA. Alternatively, AAB including either Mathematics or Computer Science	36 points, 666 at HL. Alternatively, 34 points overall, 665 at HL including Mathematics or Computer Science	5 GCSE passes, English at C/4 and Maths at B/5	6.0 overall, 5.5 in all components
qmul.ac.uk/G401	G41Y	September					

Computer Science and Mathematics

Award	UCAS course code	Type	Duration ¹	Entry requirements			
BSc (Hons)	GG41	Joint	3 years	A-level²	International Baccalaureate	GCSE	English language
URL	Year Abroad	Entry month	Related courses	AAB including Mathematics	34 points, 665 at HL including Mathematics	5 GCSE passes, English at C/4 and Maths at B/5	6.0 overall, 5.5 in all components
qmul.ac.uk/GG41	GG4Y	September	Year with Industrial Experience/Professional Placement - IG41				

Computer Science with Management (ITMB)

Award	UCAS course code	Type	Duration ¹	Entry requirements			
BSc (Hons)	I9N1	Major/Minor	3 years	A-level²	International Baccalaureate	GCSE	English language
URL	Year Abroad	Entry month	Related courses	AAB. Alternatively, ABB including either Mathematics or Computer Science	34 points, 665 at HL. Alternatively, 32 points overall, 655 at HL including Mathematics or Computer Science	5 GCSE passes, English at C/4 and Maths at B/5	6.0 overall, 5.5 in all components
qmul.ac.uk/I9N1	I9N2	September	Year with Industrial Experience/Professional Placement - I9NY				

Digital and Technology Solutions (Data Analyst)

Award	UCAS course code	Type	Duration ¹	Entry requirements			
BSc (Hons)/Degree Apprenticeship	G4DA	Single	4 years	A-level²	International Baccalaureate	GCSE	English language
URL	Year Abroad	Entry month	Related courses	AAB. Alternatively, ABB including either Mathematics or Computer Science	34 points, 665 at HL. Alternatively, 32 points overall, 655 at HL including Mathematics or Computer Science	5 GCSE passes, English at C/4 and Maths at B/5	GCSE 4/C or accepted equivalent
qmul.ac.uk/G4DA	-	September					

Digital and Technology Solutions (Software Engineer)

Award	UCAS course code	Type	Duration ¹	Entry requirements			
BSc (Hons)/Degree Apprenticeship	G4DE	Single	4 years	A-level²	International Baccalaureate	GCSE	English language
URL	Year Abroad	Entry month	Related courses	AAB. Alternatively, ABB including either Mathematics or Computer Science	34 points, 665 at HL. Alternatively 655 at HL including Mathematics or Computer Science	5 GCSE passes, English at C/4 and Maths at B/5	GCSE 4/C or accepted equivalent
qmul.ac.uk/G4DE	-	September					

Electrical and Electronic Engineering

Award	UCAS Course code	Type	Duration ¹	Entry requirements			
BEng (Hons)	H600	Single	3 years	A-level²	International Baccalaureate	GCSE	English language
URL	Year Abroad	Entry month	Related courses	ABB including Mathematics and a second science subject, preferably Physics, Electronics or Computing	32 points, 655 at HL including Mathematics and a second relevant science subject	5 GCSE passes, English at C/4	6.0 overall, 5.5 in all components
qmul.ac.uk/H600	H60Y	September	<ul style="list-style-type: none"> Foundation - HHX0 Year with Industrial Experience/ Professional Placement - H602 				

Electrical and Electronic Engineering

Award	UCAS course code	Type	Duration ¹	Entry requirements			
MEng (Hons)	H608	Single	4 years	A-level²	International Baccalaureate	GCSE	English language
URL	Year Abroad	Entry month	Related courses	AAB including Mathematics and a second science subject, preferably Physics, Electronics or Computing	34 points, 665 at HL. Alternatively, 32 points overall, 655 at HL including Mathematics or Computer Science	5 GCSE passes, English at C/4	6.0 overall, 5.5 in all components
qmul.ac.uk/H608	-	September					

Electronic Engineering

Award	UCAS course code	Type	Duration ¹	Entry requirements			
BEng (Hons)	H610	Single	3 years	A-level²	International Baccalaureate	GCSE	English language
URL	Year Abroad	Entry month	Related courses	ABB including Mathematics and a second science subject, preferably Physics, Electronics or Computing	32 points, 655 at HL including Mathematics and a second relevant science subject	5 GCSE passes, English at C/4	6.0 overall, 5.5 in all components
qmul.ac.uk/H610	H61Y	September	<ul style="list-style-type: none"> Foundation - HHX0 Year with Industrial Experience/ Professional Placement - H611 				

*Programme subject to approval.

¹Programmes with an integrated foundation year, year abroad or industrial/professional experience option will be one year longer in duration. Please note that programmes that include a modern foreign language or the Language and Culture theme on the BA Liberal Arts will require a year abroad.

²General Studies and Critical Thinking A-levels are not accepted as part of our entry requirements.

This information is accurate at the time of publishing. Please see our website for the most up-to-date information.

Dentistry

Studying in the capital means being at the forefront of modern dentistry. Providing oral healthcare in a hugely busy and diverse city gives you unparalleled opportunities to learn.

Situated next to The Royal London Hospital, one of the capital's leading trauma and emergency care centres and home to London's Air Ambulance, Queen Mary's Faculty of Medicine and Dentistry is perfectly located in Whitechapel.

A long history of excellence

The dental School opened in 1911 and we have a proud record of internationally recognised excellence in oral and dental science. In the most recent QS World University Rankings by Subject (2021), we were placed third in the world for research citations, and 14th in the world overall for Dentistry. The Institute of Dentistry at Queen Mary – the first new dental school to be built in the UK for over 40 years – houses state-of-the-art

facilities and follows an innovative curriculum. You'll study care of the mouth, including prevention and treatment of dental diseases, screening for oral cancers, managing trauma (for example, the results of road accidents or violence), orthodontics and oral surgery.

With support from tutors, you'll be encouraged to develop an independent attitude to learning. Important features include small group teaching, practical clinical skill sessions, lectures and symposia, and communication skills training. You'll also undertake extended outreach periods in the Docklands and Stratford, London.

Life on campus

Our Whitechapel campus is surrounded by bustling markets,

art, culture and food, with the City of London and historic Brick Lane on its doorstep. The Barts and the London Students' Association has its own set of representatives, societies and sports clubs, as well as a bar, games room and dance studio on site. You can also live at our Charterhouse Square campus, close to the Barbican and Farringdon. This is home to some of our renowned research Institutes including the Barts Cancer Institute, the Wolfson Institute of Population Health and the William Harvey Research Institute. We're proud that the 2020 and 2021 National Student Surveys ranked us first in London for student satisfaction in Medicine and Dentistry.

What are we up to?

During the Covid-19 pandemic,

our dental staff and students volunteered to work in hospitals, including the maternity wards at The Royal London, to support their medical colleagues and patients.

Our academics are pioneers in public healthcare whose research improves lives around the world. Professor Robert Hill became the first British winner of the prestigious Varshneya Award for his work developing BioMin toothpaste containing fluoride glass technology, which dissolves slowly releasing calcium, phosphate and fluoride ions. It is now sold across Europe, China, India and Australia, and BioMin is licensing its technology to dental companies for varnishes, composite fillings and adhesives.

The International Association for Dental Research (IADR) announced Professor David Williams as the 2021 recipient of their Gold Medal Award. This recognises his research into the causes and consequences of oral health inequalities, which led to the establishment of a global initiative aimed at reducing these inequalities.

We are also setting up a new mouth cancer centre to improve survival and quality of life for thousands of patients with squamous cancer. This will bring together clinical and research experts to work with patient groups, run clinical trials, and build a human tissue bank to improve knowledge and understanding.



Our alumni

The most enjoyable part was being in clinic. For me the practical teaching beats sitting in a lecture theatre. I had the most fun on the emergency clinic. Helping patients in pain was very rewarding. I was also lucky to spend two weeks in Japan for my elective placement.

Bhavin Borkhatra,
General Dental Practitioner and
Co-founder of NOQ Group, BDS
Dentistry (2015)



Student's view

My favourite thing about my degree is the clinical aspect, especially meeting patients. I also really enjoyed that it gave me an insight into different dental specialities, including community-based and public health aspects! The dental hospital and dental outreach sites are well-equipped, state-of-the-art facilities; providing students with invaluable clinical experience.

Haleema Rabeea,
BDS Dentistry (4th year) and
MSc Global Public Health and
Policy (intercalated)

Alternative programmes

You can apply to four dental schools via UCAS, but did you know you can add a fifth choice? The extra slot can be used to apply to a non-medical or non-dental course. You may be interested in our BSc Oral Health degree, which teaches you the skills and knowledge required for you to register with the General Dental Council as a dental therapist or hygienist on graduation.

If you're looking for other opportunities for your non-dental and non-medical choice, the life sciences courses offered at Queen Mary could be the answer. Whether you dream of solving medical or dental problems through the development of innovative technology and devices, becoming a laboratory scientist, or getting involved in shaping healthcare policies, these programmes offer you exciting routes into careers that are shaping the future of global healthcare:

- Biomedical Engineering BEng/MEng
- Biomedical Sciences BSc
- Materials Science and Engineering BEng/MEng

Where could dentistry take you?

Our BDS Dentistry graduates have an enviable employment record, with 100 per cent of those in employment going on to highly skilled jobs or further study (Graduate Outcomes Survey 2017/18).

Most of our BDS graduates typically work as dental foundation trainees, after which they either remain in the NHS or move into the private sector. A number of our graduates also work as dental practitioners in hospitals, in the community, or the armed forces, with some working overseas.

Our BSc in Oral Health will enable registration with the General Dental Council as both a dental hygienist and a dental therapist.



Ranked **14th**
in the world for
dentistry by QS World
University Rankings
by Subject, 2021

Learn more



About our
programmes



About the
Faculty



Whitechapel Library
Whitechapel campus

Degree programmes

International Baccalaureate requirements: HL = Higher Level, SL = Standard Level
English language requirements: W = Writing, R = Reading, L = Listening, S = Speaking

Please note that these are the minimum entry requirements we will consider, but, given the strong competition for places, they do not guarantee an offer of interview.

Dentistry

Award	UCAS course code	Type	Duration ¹	Entry requirements			
BDS	A200	Single	5 years	A-level²	International Baccalaureate	GCSE	English language
URL	Year Abroad	Entry month	Related courses				
qmul.ac.uk/A200	-	September		A*AA including Biology or Chemistry, and a second science from Biology, Chemistry, Physics or Mathematics. Results must be achieved in one sitting over a period of no longer than two years	38 points, 666 at HL including Biology or Chemistry, and a second science or Mathematics	AAABBB or 777666 (or above), in any order, to include Biology (or Human Biology), Chemistry, English Language, and Mathematics (or Additional Mathematics or Statistics). The Science Double Award may substitute all sciences at GCSE	7.0 overall, 6.5 in W, 5.5 in R, L, S

Oral Health

Award	UCAS course code	Type	Duration ¹	Entry requirements			
BSc (Hons)	A910	Single	3 years	A-level²	International Baccalaureate	GCSE	English language
URL	Year Abroad	Entry month	Related courses				
qmul.ac.uk/A910	-	September		ABB including Biology	32 points, 655 at HL including Biology	6 GCSE passes at C/4 including English, Maths, Biology and Chemistry. The Science Double Award may substitute all sciences at GCSE	7.0 overall, 6.5 in W, 5.5 in R, L, S

*Programme subject to approval.

¹Programmes with an integrated foundation year, year abroad or industrial/professional experience option will be one year longer in duration. Please note that programmes that include a modern foreign language or the Language and Culture theme on the BA Liberal Arts will require a year abroad.

²General Studies and Critical Thinking A-levels are not accepted as part of our entry requirements.

This information is accurate at the time of publishing. Please see our website for the most up-to-date information.

Drama

At Queen Mary, you'll study drama in one of the world's great theatre cities. We're ranked second overall in the UK for drama by the Times Good University Guide 2022.

Our approach

We focus on developing students' knowledge and expertise, both practical and theoretical. We teach you about performance, its histories, how it intervenes in the present, and how these things might affect the future.

We're not tied to rigid definitions of performance, and investigate how it can be used in different settings – theatres, art galleries and museums, schools, prisons, warehouses, and the street – in the UK and internationally.

With a commitment to social justice, the Department of Drama draws on the work of our activist theatre makers, including Paul Heritage and Lois Weaver, creating new ways of thinking about the classics. We're dedicated to exploring

marginalised texts, voices and communities in order to examine life through performance.

World-leading expertise

The most recent Research Excellence Framework (2014) ranked us first in the UK for research in drama. Our main areas of expertise are cultural histories of performance, transnational performance, live art, and socially engaged and applied performance.

Our world-renowned teaching team includes artists, writers and performers. You could work with some fascinating writers and teachers: activist playwright Dr Mojisola Adebayo, radical writer Dr Michael Shane Boyle and participatory performance expert Professor Caoimhe McAviney.

Three Arts Council England organisations are based at Queen Mary: People's Palace Projects, Phakama and *Wasafiri*. The Department is a key partner in A Season of Bangla Drama and the Live Art Development Agency.

Making the world better through drama

The Verbatim Formula (TVF) is a collaborative participatory arts project founded by lecturer Dr Maggie Inchley. TVF specialises in sharing the stories of young people in care and care leavers, including those in higher education. By using the Headphone Verbatim method – a technique where a performer listens to audio recordings of a testimony through headphones while saying what they hear out loud, becoming a vessel for the original speaker's voice.

Another example is People's Palace Projects, who explore how people's worlds can be transformed through art. The organisation brings together artists, activists, academics and audiences for projects that address a wide range of social justice and human rights issues.

Where could drama take you?

Drama graduates go on to work in a variety of roles, including

performing, programming and producing, and in sectors as varied as the arts, care, entrepreneurship, media, publishing and teaching, nursing, theatre, social work, art therapy and TV production.

Recent drama graduates work for companies including the BBC, Electric Cinema, London Film Museum, National Theatre, Odeon Cinemas and Shakespeare's Globe.

Learn more



Visit our
Drama Hub



What can
you do with a
drama degree?



Our
alumni

The course has allowed myself to become an independent artist, exposing me to new arts and ways of creating. Hopefully my research into the world of drama continues in time and my love for the subject only grows – I would love to do my masters and PhD if possible.

Joshua Lowes,
BA Drama (2021)



Our
staff

Dr Mojisola Adebayo, a Queen Mary alumna and lecturer, won the Alfred Fagon Prize for her play *Family Tree*. The play explores an important underrepresented voice written out of history. *To Do List* praised the play as "a beautifully poetic site-responsive promenade performance inspired by the little-known story of Henrietta Lacks and her stolen cells".

Degree programmes

International Baccalaureate requirements: HL = Higher Level, SL = Standard Level
English language requirements: W = Writing, R = Reading, L = Listening, S = Speaking

Drama

Award	UCAS course code	Type	Duration ¹	Entry requirements			
BA (Hons)	W400	Single	3 years	A-level²	International Baccalaureate	GCSE	English language
URL	Year Abroad	Entry month	Related courses	BBB including at least one arts, humanities or social sciences subject			
qmul.ac.uk/W400	W401	September					

Drama and History

Award	UCAS course code	Type	Duration ¹	Entry requirements			
BA	WV01	Joint	3 years	A-level²	International Baccalaureate	GCSE	English language
URL	Year Abroad	Entry month	Related courses	ABB			
qmul.ac.uk/WV01	WV0F	September					

Drama with Creative Writing

Award	UCAS course code	Type	Duration ¹	Entry requirements			
BA	WW44	Joint	3 years	A-level²	International Baccalaureate	GCSE	English language
URL	Year Abroad	Entry month	Related courses	BBB, including at least one arts, humanities or social sciences subject			
qmul.ac.uk/WW44	WW45	September					

*Programme subject to approval.

¹Programmes with an integrated foundation year, year abroad or industrial/professional experience option will be one year longer in duration. Please note that programmes that include a modern foreign language or the Language and Culture theme on the BA Liberal Arts will require a year abroad.

²General Studies and Critical Thinking A-levels are not accepted as part of our entry requirements.

This information is accurate at the time of publishing. Please see our website for the most up-to-date information.

Economics and Finance

At the School of Economics and Finance, you'll be given the tools and opportunities you need to succeed in your chosen career. We're located close to London's financial districts in the City and Canary Wharf, meaning that you'll benefit from our links with leading names in banking and finance.

Our programmes

We offer a broad curriculum, providing a solid foundation in the three core areas of economics: microeconomics, macroeconomics and quantitative analysis, as well as finance.

You can combine our degrees with an Integrated Foundation Year, a Year Abroad, or a Year in Industry, and all of our finance degrees are accredited by the Chartered Financial Analysts Society. This means that our graduates can take Investment Management Certificate professional qualifications without having to complete a further two years of study.

We're one of the few UK universities to offer access to Bloomberg trading terminals in our designated trading room,

as well as an Interactive Brokers Trader Workstation and FXCM Forex Trading Station, as used by economists. You'll also benefit from access to the major statistical databases and software packages.

What are we up to?

Our teaching staff are at the forefront of influential research in economic and finance policy. Academics and visiting professors have strong links with industry, including the Bank of England, HM Treasury and global financial institutions, and are often featured in national and international media outlets such as the *Financial Times*, the *Wall Street Journal* and the *New York Times*.

Dr Sang Yoon (Tim) Lee, Reader in Economics, received a grant

from the British Academy in order to gain specific insight into the global health pandemic. In his research, he examined the unequal impact of Covid-19 and policy responses on observed infection rates and economic status in the UK and South Korea – specifically the impact on Covid-19 deaths and GDP drops in both countries.

Where could economics and finance take you?

Our programmes give you the necessary base of knowledge and skills to access academic and professional routes in economics, finance, politics, government, management, consultancy and statistics. Many of our graduates go on to pursue postgraduate studies at Queen Mary and other leading institutions.

Recent graduates have found employment at organisations including JP Morgan, UBS, Goldman Sachs, Barclays, Santander, KPMG, EY (Ernst & Young), Deloitte, PwC, Financial Ombudsman Service, Government Economic Service and Thomson Reuters. Roles include finance and investment analysts and advisers,

management consultants, business analysts and economists.

Our dedicated careers team provides one-on-one appointments for support with job applications, practice interviews, internship opportunities and employability events.

Learn more



About the School



Take a virtual tour of our building



Our alumni

The lectures and tutorials are structured with a balanced mix of both quantitative and qualitative fundamentals. I started off with minimal comprehension of the industry, but I certainly left with a knowledge of core investment concepts, and an incentive to explore additional asset classes and economic branches.

Mara Rodriguez,
BSc Economics (2021)



Student's view

The best thing about studying here is the network of alumni and employers we have access to. There are always opportunities for insight events enabling you to make connections. The staff are always happy to help – they make studying here, even in these challenging times, an incredibly enjoyable experience.

Callum Sycamore,
BSc Economics (3rd year)

Degree programmes

International Baccalaureate requirements:

HL = Higher Level, SL = Standard Level

English language requirements:

W = Writing, R = Reading, L = Listening, S = Speaking

Applied Finance*

Award	UCAS course code	Type	Duration ¹	Entry requirements			
BSc (Econ)(Hons)/ Degree Apprenticeship	TBC	Single	4 years	A-level²	International Baccalaureate	GCSE	English language
URL	Year Abroad	Entry month	Related courses	AAA including Mathematics. Excludes Use of Mathematics	36 points, 666 at HL, including 6 in SL Mathematics, if not being studied at HL. Excludes Maths Studies	5 GCSE passes, English and Maths at B/5	GCSE B/5 or accepted equivalent
TBC	-	September	-				

Economics

Award	UCAS course code	Type	Duration ¹	Entry requirements			
BSc (Econ)(Hons)	L100	Single	3 years	A-level²	International Baccalaureate	GCSE	English language
URL	Year Abroad	Entry month	Related courses	AAA including Mathematics. Excludes Use of Mathematics	36 points, 666 at HL, including 6 in SL Mathematics, if not being studied at HL. Excludes Maths Studies	5 GCSE passes, English and Maths at B/5	6.5 overall, 6.0 in W, 5.5 in R, L, S
qmul.ac.uk/L100	L10Y	September	Year with Industrial Experience - L109				

Economics with Integrated Foundation Year

Award	UCAS course code	Type	Duration ¹	Entry requirements			
BSc (Econ)(Hons)	L10F	Single	4 years	A-level²	International Baccalaureate	GCSE	English language
URL	Year Abroad	Entry month	Related courses	For full details of the entry requirements, please visit qmul.ac.uk/L10F			6.0 overall, 5.5 in all components
qmul.ac.uk/L10F	L10X	September	Year with Industrial Experience - L108				

Economics with Integrated Foundation Year

Award	UCAS course code	Type	Duration ¹	Entry requirements			
BSc (Econ)(Hons)	L10G	Single	4 years	A-level²	International Baccalaureate	GCSE	English language
URL	Year Abroad	Entry month	Related courses	For full details of the entry requirements, please visit qmul.ac.uk/L10G			6.0 overall, 5.5 in all components
qmul.ac.uk/L10G	L10Z	January	Year with Industrial Experience - L107				

Economics and Finance

Award	UCAS course code	Type	Duration ¹	Entry requirements			
BSc (Econ)(Hons)	LN13	Single	3 years	A-level²	International Baccalaureate	GCSE	English language
URL	Year Abroad	Entry Month	Related courses	AAA including Mathematics. Excludes Use of Mathematics	36 points, 666 at HL, including 6 in SL Mathematics, if not being studied at HL. Excludes Maths Studies	5 GCSE passes, English and Maths at B/5	6.5 overall, 6.0 in W, 5.5 in R, L, S
qmul.ac.uk/LN13	LN3Y	September	Year with Industrial Experience - L1N3				

Economics and Finance with Integrated Foundation Year

Award	UCAS course code	Type	Duration ¹	Entry requirements			
BSc (Econ)(Hons)	LN3F	Single	4 years	A-level²	International Baccalaureate	GCSE	English language
URL	Year Abroad	Entry Month	Related courses	For full details of the entry requirements, please visit qmul.ac.uk/LN3F			6.0 overall, 5.5 in all components
qmul.ac.uk/LN3F	LN3X	September	Year with Industrial Experience - L1N4				

Economics and Finance with Integrated Foundation Year

Award	UCAS course code	Type	Duration ¹	Entry requirements			
BSc (Econ)(Hons)	LN3G	Single	4 years	A-level²	International Baccalaureate	GCSE	English language
URL	Year Abroad	Entry month	Related courses	For full details of the entry requirements, please visit qmul.ac.uk/LN3G			6.0 overall, 5.5 in all components
qmul.ac.uk/LN3G	LN3Z	January	Year with Industrial Experience - L1N5				

Economics and International Finance

Award	UCAS course code	Type	Duration ¹	Entry requirements			
BSc (Econ)(Hons)	L13N	Single	3 years	A-level²	International Baccalaureate	GCSE	English language
URL	Year Abroad	Entry month	Related courses	AAA including Mathematics. Excludes Use of Mathematics	36 points, 666 at HL, including 6 in SL Mathematics, if not being studied at HL. Excludes Maths Studies	5 GCSE passes, English and Maths at B/5	6.5 overall, 6.0 in W, 5.5 in R, L, S
qmul.ac.uk/L13N	L1NY	September	Year with Industrial Experience - L19N				

Economics and International Finance with Integrated Foundation Year

Award	UCAS course code	Type	Duration ¹	Entry requirements			
BSc (Econ)(Hons)	L1NF	Single	4 years	A-level²	International Baccalaureate	GCSE	English language
URL	Year Abroad	Entry month	Related courses	For full details of the entry requirements, please visit qmul.ac.uk/L1NF			6.5 overall, 6.0 in W, 5.5 in R, L, S
qmul.ac.uk/L1NF	L1NX	September	Year with Industrial Experience - L18N				

Economics and International Finance with Integrated Foundation Year

Award	UCAS course code	Type	Duration ¹	Entry requirements			
BSc (Econ)(Hons)	L1NG	Single	4 years	A-level²	International Baccalaureate	GCSE	English language
URL	Year Abroad	Entry month	Related courses	For full details of the entry requirements, please visit qmul.ac.uk/L1NG			6.0 overall, 5.5 in all components
qmul.ac.uk/L1NG	L1NZ	January	Year with Industrial Experience - L17N				

Economics and International Relations

Award	UCAS course code	Type	Duration ¹	Entry requirements			
BSc (Econ)(Hons)	L2L1	Joint	3 years	A-level²	International Baccalaureate	GCSE	English language
URL	Year Abroad	Entry month	Related courses	AAA including Mathematics 36 points, 666 at HL. This must include a minimum of 6 in SL Mathematics, if not being studied at HL. Excludes Maths Studies 5 GCSE passes, English and Maths at B/5 7.0 overall, 6.5 in W, 5.5 in R, L, S			
qmul.ac.uk/L2L1	L2LY	September	Year with Industrial Experience - L1L9				

Economics and International Relations with Integrated Foundation Year

Award	UCAS course code	Type	Duration ¹	Entry requirements			
BSc (Econ)(Hons)	L2LF	Joint	4 years	A-level²	International Baccalaureate	GCSE	English language
URL	Year Abroad	Entry month	Related courses	For full details of the entry requirements, please visit qmul.ac.uk/L2LF 6.0 overall, 5.5 in all components			
qmul.ac.uk/L2LF	L2LX	September	Year with Industrial Experience - L1L8				

Economics and International Relations with Integrated Foundation Year

Award	UCAS course code	Type	Duration ¹	Entry requirements			
BSc (Econ)(Hons)	L2LJ	Joint	4 years	A-level²	International Baccalaureate	GCSE	English language
URL	Year Abroad	Entry month	Related courses	For full details of the entry requirements, please visit qmul.ac.uk/L2LJ 6.0 overall, 5.5 in all components			
qmul.ac.uk/L2LJ	L2LW	January	Year with Industrial Experience - L1L7				

Economics and Politics

Award	UCAS course code	Type	Duration ¹	Entry requirements			
BSc (Econ)(Hons)	LL12	Joint	3 years	A-level²	International Baccalaureate	GCSE	English language
URL	Year Abroad	Entry month	Related courses	AAA including Mathematics. Excludes Use of Mathematics 36 points, 666 at HL, including 6 in SL Mathematics, if not being studied at HL. Excludes Maths Studies 5 GCSE passes, English and Maths at B/5 7.0 overall, 6.0 in W, 5.5 in R, L, S			
qmul.ac.uk/LL12	LL2Y	September	Year with Industrial Experience - LL19				

Economics and Politics with Integrated Foundation Year

Award	UCAS course code	Type	Duration ¹	Entry requirements			
BSc (Econ)(Hons)	LL2F	Joint	4 years	A-level²	International Baccalaureate	GCSE	English language
URL	Year Abroad	Entry month	Related courses	For full details of the entry requirements, please visit qmul.ac.uk/LL2F 6.0 overall, 5.5 in all components			
qmul.ac.uk/LL2F	LL2X	September	Year with Industrial Experience - LL18				

Economics and Politics with Integrated Foundation Year

Award	UCAS course code	Type	Duration ¹	Entry requirements			
BSc (Econ)(Hons)	LL2G	Joint	4 years	A-level²	International Baccalaureate	GCSE	English language
URL	Year Abroad	Entry month	Related courses	For full details of the entry requirements, please visit qmul.ac.uk/LL2G			6.0 overall, 5.5 in all components
qmul.ac.uk/LL2G	LL2Z	January	Year with Industrial Experience - LL17				

Economics, Finance and Management

Award	UCAS course code	Type	Duration ¹	Entry requirements			
BSc (Econ)(Hons)	LN12	Single	3 years	A-level²	International Baccalaureate	GCSE	English language
URL	Year Abroad	Entry month	Related courses	AAA including Mathematics. Excludes Use of Mathematics			6.5 overall, 6.0 in W, 5.5 in R, L, S
qmul.ac.uk/LN12	LN2Y	September	Year with Industrial Experience - LN19				

Economics, Finance and Management with Integrated Foundation Year

Award	UCAS course code	Type	Duration ¹	Entry requirements			
BSc (Econ)(Hons)	LN2F	Single	4 years	A-level²	International Baccalaureate	GCSE	English language
URL	Year Abroad	Entry month	Related courses	For full details of the entry requirements, please visit qmul.ac.uk/LN2F			6.0 overall, 5.5 in all components
qmul.ac.uk/LN2F	LN2X	September	Year with Industrial Experience - LN18				

Economics, Finance and Management with Integrated Foundation Year

Award	UCAS course code	Type	Duration ¹	Entry requirements			
BSc (Econ)(Hons)	LN2G	Single	4 years	A-level²	International Baccalaureate	GCSE	English language
URL	Year Abroad	Entry month	Related courses	For full details of the entry requirements, please visit qmul.ac.uk/LN2G			6.0 overall, 5.5 in all components
qmul.ac.uk/LN2G	LN2Z	January	Year with Industrial Experience - LN17				

Economics, Statistics and Mathematics

Award	UCAS course code	Type	Duration ¹	Entry requirements			
BSc (Econ)(Hons)	LG11	Joint	3 years	A-level²	International Baccalaureate	GCSE	English language
URL	Year Abroad	Entry Month	Related courses	AAA including Mathematics. Excludes Use of Mathematics			6.5 overall, 6.0 in W, 5.5 in R, L, S
qmul.ac.uk/LG11	LG1Y	September	Year with Industrial Experience - LG19				

Economics, Statistics and Mathematics with Integrated Foundation Year

Award	UCAS course code	Type	Duration ¹	Entry requirements			
BSc (Econ)(Hons)	LG1F	Joint	4 years	A-level²	International Baccalaureate	GCSE	English language
URL	Year Abroad	Entry month	Related courses	For full details of the entry requirements, please visit qmul.ac.uk/LG1F			6.0 overall, 5.5 in all components
qmul.ac.uk/LG1F	LG1X	September	Year with Industrial Experience - LG18				

Economics, Statistics and Mathematics with Integrated Foundation Year

Award	UCAS course code	Type	Duration ¹	Entry requirements			
BSc (Econ)(Hons)	LG1G	Joint	4 years	A-level²	International Baccalaureate	GCSE	English language
URL	Year Abroad	Entry month	Related courses	For full details of the entry requirements, please visit qmul.ac.uk/LG1G			6.0 overall, 5.5 in all components
qmul.ac.uk/LG1G	LG1Z	January	Year with Industrial Experience - LG17				

Finance

Award	UCAS course code	Type	Duration ¹	Entry requirements			
BSc (Econ)(Hons)	L10D	Single	3 years	A-level²	International Baccalaureate	GCSE	English language
URL	Year Abroad	Entry month	Related courses	AAA including Mathematics. Excludes Use of Mathematics	36 points, 666 at HL, including 6 in SL Mathematics, if not being studied at HL. Excludes Maths Studies	5 GCSE passes, English and Maths at B/5	6.5 overall, 6.0 in W, 5.5 in R, L, S
qmul.ac.uk/L10D	L10C	September	Year with Industrial Experience - L10B				

Finance with Integrated Foundation Year

Award	UCAS course code	Type	Duration ¹	Entry Requirements			
BSc (Econ)(Hons)	L11F	Single	4 years	A-level²	International Baccalaureate	GCSE	English language
URL	Year Abroad	Entry month	Related courses	For full details of the entry requirements, please visit qmul.ac.uk/L11G			6.0 overall, 5.5 in all components
qmul.ac.uk/L11F	L11X	September	Year with Industrial Experience - L113				

Finance with Integrated Foundation Year

Award	UCAS course code	Type	Duration ¹	Entry requirements			
BSc (Econ)(Hons)	L11G	Single	4 years	A-level²	International Baccalaureate	GCSE	English language
URL	Year Abroad	Entry month	Related courses	For full details of the entry requirements, please visit qmul.ac.uk/L11F			6.0 overall, 5.5 in all components
qmul.ac.uk/L11G	L11Y	January	Year with Industrial Experience - L114				

*Programme subject to approval.

¹Programmes with an integrated foundation year, year abroad or industrial/professional experience option will be one year longer in duration. Please note that programmes that include a modern foreign language or the Language and Culture theme on the BA Liberal Arts will require a year abroad.

²General Studies and Critical Thinking A-levels are not accepted as part of our entry requirements.

This information is accurate at the time of publishing. Please see our website for the most up-to-date information.

Engineering and Materials Science

Our modern degree programmes have been designed in consultation with our students, staff and industry, and reflect the global challenges facing both our society and your future as engineers.

Our approach

Here at Queen Mary, we teach students how engineering theory is applied in real-life situations, and how engineering principles can be used to solve real-world problems.

Our practical approach helps bring engineering concepts to life, placing student-centred learning, laboratory work, case studies, and design, build and test at the heart of our programmes.

From your first year, you'll build a strong foundation in fundamental engineering concepts such as fluid mechanics, design, materials and mathematical modelling, while being introduced to chosen specialisms through our Explore Engineering modules.

Our engineering students have access to state-of-the-art facilities. We've invested over £30m in refurbishing and expanding our engineering labs, ensuring that our students are well equipped for a future in engineering.

Queen Mary has a long, proud history of teaching engineering, throughout which we've maintained our passion for innovation and discovery. Our academics are at the forefront of their field, with their research feeding into the curriculum.

What are we up to?

Engineers are the ultimate creative problem solvers: they find solutions to issues and work to improve the world. Queen Mary is a hub of ground-breaking, world-changing research.

Our sustainable energy and mechanical engineers are working with Wave Energy Scotland to improve wave energy efficiency off the UK coasts, while bioengineers are developing a complex *in vitro* model of human tumours and robotics engineers are making advancements in the field of soft robotics.

Dr Karin Hing's development of a synthetic bone graft made it into the six stamp set marking innovations in British engineering from the last 50 years. Her team at Queen Mary engineered materials that encourage bone growth when used in complex orthopaedic surgeries and have improved the outcomes for hundreds of thousands of patients worldwide.

Where could engineering take you?

An engineering degree offers exciting career prospects, with engineering and manufacturing industries in the UK and across the world expected to expand even further over the next decade.

We're committed to enhancing graduate employability, and have introduced a graduate attributes matrix to help students develop the knowledge and skills they need to succeed both personally and professionally.

This matrix allows students to recognise and record the wide-ranging skills developed over the course of their degree, which will help them reflect on what they want to do and effectively market themselves to future employers.

Recent graduates have gone on to work for Jaguar Land Rover, Schlumberger, the NHS, Rolls-Royce, Dyson, National Nuclear Laboratory, BAE Systems, Network Rail and BT.

Learn more



About our programmes



About the School



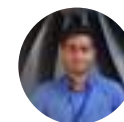
Take a virtual tour of our building



Our alumni

During my degree I gained insights from a variety of fields including sustainability, which I then decided turn into my profession. Queen Mary made it very easy for me to explore and understand what I am good at and enjoy through state-of-the-art teaching and industry-led projects.

Gioia Etchi, Life Cycle Assessment Consultant at Avieco, MEng Materials Science and Engineering (2018)



Student's view

My course has taught me various aspects of engineering analysis, design and practical applications, which have been thoroughly enjoyable and insightful. My advisers guided me to secure an industrial placement at Rolls-Royce, where I worked as a mechanical engineering intern and had incredible opportunities to learn from industrial experts.

Soham Deshpande, MEng Mechanical Engineering with Industrial Experience (5th year)

Degree programmes

International Baccalaureate requirements:

HL = Higher Level, SL = Standard Level

English language requirements:

W = Writing, R = Reading, L = Listening, S = Speaking

Aerospace Engineering

Award	UCAS course code	Type	Duration ¹	Entry requirements			
BEng (Hons)	H421	Single	3 years	A-level²	International Baccalaureate	GCSE	English language
URL	Year Abroad	Entry month	Related courses	AAB including Mathematics, and Physics or Chemistry			
qmul.ac.uk/H421	H42Y	September	<ul style="list-style-type: none"> Foundation - HHX3 Year with Industrial Experience/Professional Placement - H401 				
				34 points, 665 at HL including Mathematics, and either Physics or Chemistry	5 GCSE passes, English at C/4	6.0 overall, 5.5 in all components	

Aerospace Engineering

Award	UCAS course code	Type	Duration ¹	Entry requirements			
MEng (Hons)	H400	Single	4 years	A-level²	International Baccalaureate	GCSE	English language
URL	Year Abroad	Entry month	Related courses	AAA including Mathematics, and Physics or Chemistry			
qmul.ac.uk/H400	H40Y	September	Year with Industrial Experience/Professional Placement - HK00				
				36 points, 665 at HL including Mathematics, and either Physics or Chemistry	5 GCSE passes, English at C/4	6.0 overall, 5.5 in all components	

Biomedical Engineering

Award	UCAS course code	Type	Duration ¹	Entry requirements			
BEng (Hons)	HBF2	Single	3 years	A-level²	International Baccalaureate	GCSE	English language
URL	Year Abroad	Entry month	Related courses	AAB including Mathematics, and Physics or Chemistry			
qmul.ac.uk/HBF2	HBFY	September	<ul style="list-style-type: none"> Foundation - HHX3 Year with Industrial Experience/Professional Placement - HBF1 				
				34 points, 665 at HL including Mathematics, and either Physics or Chemistry	5 GCSE passes, English at C/4	6.0 overall, 5.5 in all components	

Biomedical Engineering

Award	UCAS course code	Type	Duration ¹	Entry requirements			
MEng (Hons)	HBF5	Single	4 years	A-level²	International Baccalaureate	GCSE	English language
URL	Year Abroad	Entry month	Related courses	AAA including Mathematics, and Physics or Chemistry			
qmul.ac.uk/HBF5	HBFX	September	Year with Industrial Experience/Professional Placement - HBF3				
				36 points, 665 at HL including Mathematics, and either Physics or Chemistry	5 GCSE passes, English at C/4	6.0 overall, 5.5 in all components	

Chemical Engineering

Award	UCAS course code	Type	Duration ¹	Entry requirements			
BEng (Hons)	H812	Single	3 years	A-level²	International Baccalaureate	GCSE	English language
URL	Year Abroad	Entry month	Related courses	AAB including Mathematics, and Physics or Chemistry	34 points, 665 at HL including Mathematics, and either Physics or Chemistry	5 GCSE passes, English at C/4	6.0 overall, 5.5 in all components
qmul.ac.uk/H812	H81Y	September	<ul style="list-style-type: none"> Foundation - HHX3 Year with Industrial Experience/ Professional Placement - H811 				

Chemical Engineering

Award	UCAS course code	Type	Duration ¹	Entry requirements			
MEng (Hons)	H814	Single	4 years	A-level²	International Baccalaureate	GCSE	English language
URL	Year Abroad	Entry month	Related courses	AAA including Mathematics, and Physics or Chemistry	36 points, 665 at HL including Mathematics, and either Physics or Chemistry	5 GCSE passes, English at C/4	6.0 overall, 5.5 in all components
qmul.ac.uk/H814	H84Y	September	Year with Industrial Experience/ Professional Placement - H813				

Computer Systems Engineering

Award	UCAS course code	Type	Duration ¹	Entry requirements			
BEng (Hons)	H162	Single	3 years	A-level²	International Baccalaureate	GCSE	English language
URL	Year Abroad	Entry month	Related courses	ABB including Mathematics	32 points, 655 at HL including Mathematics and a second relevant science subject	5 GCSE passes, English at C/4	6.0 overall, 5.5 in all components
qmul.ac.uk/H162	H16Y	September	<ul style="list-style-type: none"> Foundation - HHX0 Year with Industrial Experience/ Professional Placement - H163 				

Design, Innovation and Creative Engineering

Award	UCAS course code	Type	Duration ¹	Entry requirements			
BEng (Hons)	4A33	Single	3 years	A-level²	International Baccalaureate	GCSE	English language
URL	Year Abroad	Entry month	Related courses	AAB including Maths or Physics. If you do not have an additional creative subject you should be able to demonstrate creativity by another method, for example as a GCSE or an activity outside school	34 points, 665 at HL including Mathematics or Physics, and one further subject from Mathematics, Physics, Chemistry or Design Technology	5 GCSE passes, English at C/4	6.0 overall, 5.5 in all components
qmul.ac.uk/4A33	4A3Y	September					

Design, Innovation and Creative Engineering

Award	UCAS course code	Type	Duration ¹	Entry requirements			
MEng (Hons)	4L71	Single	4 years	A-level²	International Baccalaureate	GCSE	English language
URL	Year Abroad	Entry month	Related courses	AAA including Maths or Physics. If you do not have an additional in a creative subject you should be able to demonstrate creativity by another method, for example as a GCSE or an activity outside school	36 points, 665 at HL including Mathematics or Physics, and one further subject from Mathematics, Physics, Chemistry or Design Technology	5 GCSE passes, English at C/4	6.0 overall, 5.5 in all components
qmul.ac.uk/4L71	4L7Y	September					

Materials Science and Engineering

Award	UCAS course code	Type	Duration ¹	Entry requirements			
BEng (Hons)	J511	Single	3 years	A-level²	International Baccalaureate	GCSE	English language
URL	Year Abroad	Entry month	Related courses	ABB including at least two subjects from Mathematics, Physics or Chemistry	32 points, 655 at HL including at least two subjects of Mathematics, Physics or Chemistry	5 GCSE passes, English at C/4	6.0 overall, 5.5 in all components
qmul.ac.uk/J511	J51Y	September	<ul style="list-style-type: none"> Foundation - JJX3 Year with Industrial Experience/Professional Placement - JM11 				

Materials Science and Engineering

Award	UCAS course code	Type	Duration ¹	Entry requirements			
MEng (Hons)	J512	Single	4 years	A-level²	International Baccalaureate	GCSE	English language
URL	Year Abroad	Entry month	Related courses	AAA including at least two subjects from Mathematics, Physics or Chemistry	36 points, 665 at HL including at least two subjects of Mathematics, Physics or Chemistry	5 GCSE passes, English at C/4	6.0 overall, 5.5 in all components
qmul.ac.uk/J512	J52Y	September	Year with Industrial Experience/Professional Placement - JM10				

Mechanical Engineering

Award	UCAS course code	Type	Duration ¹	Entry requirements			
BEng (Hons)	H300	Single	3 years	A-level²	International Baccalaureate	GCSE	English language
URL	Year Abroad	Entry month	Related courses	AAB including Mathematics, and Physics or Chemistry	34 points, 665 at HL including Mathematics, and either Physics or Chemistry	5 GCSE passes, English at C/4	6.0 overall, 5.5 in all components
qmul.ac.uk/H300	H30Y	September	<ul style="list-style-type: none"> Foundation - HHX3 Year with Industrial Experience/Professional Placement - H304 				

Mechanical Engineering

Award	UCAS course code	Type	Duration ¹	Entry requirements			
MEng (Hons)	H301	Single	4 years	A-level²	International Baccalaureate	GCSE	English language
URL	Year Abroad	Entry month	Related courses	AAA including Mathematics, and Physics or Chemistry	36 points, 665 at HL including Mathematics, and either Physics or Chemistry	5 GCSE passes, English at C/4	6.0 overall, 5.5 in all components
qmul.ac.uk/H301	H31Y	September	Year with Industrial Experience/Professional Placement - H302				

Robotics Engineering

Award	UCAS course code	Type	Duration ¹	Entry requirements			
BEng (Hons)	H67A	Single	3 years	A-level²	International Baccalaureate	GCSE	English language
URL	Year Abroad	Entry month	Related courses	AAB including Maths and a second science subject, preferably Physics, Electronics, Chemistry or Computing	34 points, 665 at HL including Mathematics, and either Physics or Chemistry	5 GCSE passes, English at C/4	6.0 overall, 5.5 in all components
qmul.ac.uk/H67A	H67Y	September	<ul style="list-style-type: none"> Foundation - HHX3 Year with Industrial Experience/Professional Placement - H673 				

Robotics Engineering

Award	UCAS course code	Type	Duration ¹	Entry requirements			
MEng (Hons)	H67B	Single	4 years	A-level²	International Baccalaureate	GCSE	English language
URL	Year Abroad	Entry month	Related courses	AAA including Maths and a second science subject, preferably Physics, Electronics, Chemistry or Computing	36 points, 665 at HL including Mathematics, and either Physics or Chemistry	5 GCSE passes, English at C/4	6.0 overall, 5.5 in all components
qmul.ac.uk/H67B	H67X	September	Year with Industrial Experience/Professional Placement - H67C				

Sustainable Energy Engineering

Award	UCAS course code	Type	Duration ¹	Entry requirements			
BEng (Hons)	H221	Single	3 years	A-level²	International Baccalaureate	GCSE	English language
URL	Year Abroad	Entry month	Related courses	AAB including Mathematics, and Physics or Chemistry	34 points, 665 at HL including Mathematics, and either Physics or Chemistry	5 GCSE passes, English at C/4	6.0 overall, 5.5 in all components
qmul.ac.uk/H221	H22Y	September	<ul style="list-style-type: none"> Foundation - HHX3 Year with Industrial Experience/Professional Placement - HF21 				

Sustainable Energy Engineering

Award	UCAS course code	Type	Duration ¹	Entry requirements			
MEng (Hons)	H224	Single	4 years	A-level²	International Baccalaureate	GCSE	English language
URL	Year Abroad	Entry month	Related courses	AAA including Mathematics, and Physics or Chemistry	36 points, 665 at HL including Mathematics, and either Physics or Chemistry	5 GCSE passes, English at C/4	6.0 overall, 5.5 in all components
qmul.ac.uk/H224	H24Y	September	Year with Industrial Experience/Professional Placement - HG21				

*Programme subject to approval.

¹Programmes with an integrated foundation year, year abroad or industrial/professional experience option will be one year longer in duration. Please note that programmes that include a modern foreign language or the Language and Culture theme on the BA Liberal Arts will require a year abroad.

²General Studies and Critical Thinking A-levels are not accepted as part of our entry requirements.

This information is accurate at the time of publishing. Please see our website for the most up-to-date information.

English

We are dedicated to the broadest and most inclusive vision of English studies. You'll expand your critical skills through innovative approaches to cultures and periods, from early modern texts to writing now.

Our approach

Grounded in London's East End, our research and teaching emphasises global perspectives and the relationship between literature and the wider world. We are a highly critically-engaged English department – like the students we teach. Our areas of specialism include postcolonial and world literature, gender studies, queer theory and new media, ranging across platforms from the manuscript to the book, and from the stage to the digital.

In our modern and responsive English programme, you'll work alongside world-leading academics as you engage with literature in its widest senses and hone your critical and writing skills.

Our English with Creative Writing programme offers a diverse base

in literature with a focus on the skills needed to become a writer. The programme brings together literary history and theory from medieval literature through to contemporary and postcolonial writing, with creative writing elements designed to help you find your voice and develop successful writing techniques, whether in prose, poetry or creative non-fiction.

The programme is headed by established writer and editor Brian Dillon and includes writers like acclaimed poet Nisha Ramayya, winner of the Goldsmiths Prize 2021 Isabel Waidner, and novelist Michael Hughes.

What we do

We're committed to pursuing equality, diversity and inclusion

through our research and teaching, and our academics' work tackles issues that are central to our society and culture.

Writing in the *Guardian*, Professor of Renaissance Studies, Jerry Brotton reviewed Boris Johnson's 2007 essay on the Islamic world and its perceived lack of development compared to the West.

Professor Brotton found this take on Islam to be "historically illiterate", reporting that Johnson's essay "reveals a level of historical ignorance shocking even for such a political opportunist... Johnson might like to know that scholars now believe Michelangelo took inspiration for designing St Peter's from the imperial mosques designed by the

Ottoman architect Sinan, who also influenced the other great Italian architect, Palladio".

Professor Brotton's books have been translated into 20 languages worldwide, and his *A History of the World in Twelve Maps* was a *New York Times* bestseller.

Where could English take you?

Our graduates go on to work in all sorts of sectors, including law, teaching, publishing, media and

communications, marketing, and arts and heritage.

Some of our most well-known alumni include authors Sarah Waters, Caleb Femi, Gabriel Krauze, JG Ballard and Conn Iggulden, and TV comedy writer James Lamont. Recent graduates work for HarperCollins, Historic Royal Palaces, *The Independent*, London & Partners, Penguin Random House and Shakespeare's Globe.

Learn more



Visit our
English Hub



What can
you do with
an English
degree?



Our alumni

I had heard great things about Queen Mary, and so that's where I wanted to go. In terms of favourite modules, Postcolonial and Global Literature module and Black Writing in Britain were very eye-opening. I remember realising there's a lot we should know about literature, history and heritage that is just not taught until university. I went into publishing this year and these modules shaped my understanding of what I want to do in this industry.

Ama Badu,
BA English (2018)



We are ranked **6th for Creative Writing** and **25th for English** in the Times Good University Guide 2022.

Degree programmes

International Baccalaureate requirements:

HL = Higher Level, SL = Standard Level

English language requirements:

W = Writing, R = Reading, L = Listening, S = Speaking

English

Award	UCAS course code	Type	Duration ¹	Entry requirements			
BA (Hons)	Q300	Single	3 years	A-level²	International Baccalaureate	GCSE	English language
URL	Year Abroad	Entry month	Related courses	ABB, including A or above in English Literature, English Language and Literature or English Language			
qmul.ac.uk/Q300	Q301	September					

English and Drama

Award	UCAS course code	Type	Duration ¹	Entry requirements			
BA (Hons)	QW34	Joint	3 years	A-level²	International Baccalaureate	GCSE	English language
URL	Year Abroad	Entry month	Related courses	ABB, including A or above in English Literature, English Language and Literature or English Language			
qmul.ac.uk/QW34	QW4Y	September					

English and Film Studies

Award	UCAS course code	Type	Duration ¹	Entry requirements			
BA (Hons)	QW36	Joint	3 years	A-level²	International Baccalaureate	GCSE	English language
URL	Year Abroad	Entry Month	Related courses	ABB, including A or above in English Literature, English Language and Literature or English Language			
qmul.ac.uk/QW36	QW6Y	September					

English and History

Award	UCAS course code	Type	Duration ¹	Entry requirements			
BA (Hons)	QV31	Joint	3 years	A-level²	International Baccalaureate	GCSE	English language
URL	Year Abroad	Entry month	Related courses	ABB, including A or above in English Literature, English Language and Literature or English Language			
qmul.ac.uk/QV31	QV3Y	September					

English Language and Linguistics

Award	UCAS course code	Type	Duration ¹	Entry requirements			
BA (Hons)	QQH1	Joint	3 years	A-level²	International Baccalaureate	GCSE	English language
URL	Year Abroad	Entry month	Related courses	ABB	32 points, 655 at HL	5 GCSE passes, English at C/4	7.0 overall, 7.0 in W, 5.5 in R, L, S
qmul.ac.uk/QQH1	QQHY	September					

English Literature and Linguistics

Award	UCAS course code	Type	Duration ¹	Entry requirements			
BA (Hons)	QQ13	Joint	3 years	A-level²	International Baccalaureate	GCSE	English language
URL	Year Abroad	Entry month	Related courses	ABB, including A or above in English Literature, English Language and Literature or English Language	32 points, 655 at HL including a minimum of 6 in HL English A	5 GCSE passes, English at C/4	7.0 overall, 6.5 in W, 5.5 in R, L, S
qmul.ac.uk/QQ13	QQ1Y	September					

English with Creative Writing

Award	UCAS course code	Type	Duration ¹	Entry requirements			
BA (Hons)	QW11	Single	3 years	A-level²	International Baccalaureate	GCSE	English language
URL	Year Abroad	Entry month	Related courses	ABB, including A or above in English Literature or English Language	32 points, 655 at HL including a minimum of 6 in HL English A	5 GCSE passes, English at C/4	7.0 overall, 6.5 in W, 5.5 in R, L, S
qmul.ac.uk/QW11	QW1Y	September					

*Programme subject to approval.

¹Programmes with an integrated foundation year, year abroad or industrial/professional experience option will be one year longer in duration. Please note that programmes that include a modern foreign language or the Language and Culture theme on the BA Liberal Arts will require a year abroad.

²General Studies and Critical Thinking A-levels are not accepted as part of our entry requirements.

This information is accurate at the time of publishing. Please see our website for the most up-to-date information.

Environmental Science

Studying Environmental Science at Queen Mary equips you with the knowledge and skills necessary to shape the understanding and actions of policy makers, industry leaders, scientists, and the general public.

An interdisciplinary degree

Our programme draws on the expertise of the School of Geography and the School of Biological and Behavioural Sciences to offer a truly distinctive degree. From climate change, environmental policy and conservation to environmental engineering, ecology and evolution, our modules will develop your understanding of some of society's most pressing challenges.

You'll learn from researchers working at the forefront of their fields. Whether researching glaciers, river restoration, or environmental pollution, our academics bring their research into the classroom to ensure our students are studying at the cutting edge.

Thanks to our local, national and international connections, you can apply your knowledge to real-world problems, working with community groups, NGOs, environmental trusts and charities committed to making positive change in the world.

Academic research

Our academics have recently conducted pioneering research with lowland rewilding site Knepp Wildland on a project aiming to establish a functioning ecosystem where nature is given as much freedom as possible.

Previously an intensive arable and dairy farm, since 2001 Knepp's land has been devoted to rewilding, with grazing animals used to drive habitat creation. The project has been cited as an outstanding example of landscape restoration

in the UK government's 25 Year Environment Plan. The project explores key concepts and issues that our environmental science programme addresses, including natural flood management, environmental restoration and nature-based climate solutions.

Facilities and fieldwork

State-of-the-art laboratories and our Field Suite enable the School of Geography to undertake teaching and research in areas as diverse as environmental pollutants and hazards, river systems, greenhouse gases and climate, and sediment and fossil analysis.

Fieldwork plays a vital role in our Environmental Science programmes, taking you out of the classroom and into the real world.*

Joint programmes

Our BSc Environmental Science with Business Management allows you to add a focus on key business skills to your environmental science education. Alongside topics such as Earth surface science and ecology, you'll study a range of business modules on management, economics for business, and more.

Where could environmental science take you?

A degree in environmental science will provide you with a unique range of skills, including data

collection, analysis, interpretation and evaluation of data, problem solving, project management, teamwork and communication.

Our graduates have gone on to work as environmental consultants, sustainability analysts, geomorphologists, and climate change analysts. Outside the field of environmental science, our alumni have taken roles with the Foreign, Commonwealth and Development Office, the BBC and the Solar Impulse Foundation, to name a few.

Learn more



About the
School



About the
subject



Our
alumni

During my time at Queen Mary, I was able to develop my interests in key environmental matters including energy, climate change and environmental engineering. I was also exposed to the importance of data in research through remote sensing, geographic information systems, applied data analytics and various methodology classes.

Louis Gondy, Data Analyst at the Solar Impulse Foundation, BSc Environmental Science and Business Management (2017)



Student's
view

What I like about environmental science is that I take some biology modules, which I thought was impossible given that I did not take A-level biology. The broad range of subject requirements mean that people can still study this course even if they didn't take biology or chemistry.

Zaynah Rahman, BSc Environmental Science (1st year)

*Fieldwork destinations and opportunities may vary year-on-year and are subject to change and discontinuation.

Degree programmes

International Baccalaureate requirements: HL = Higher Level, SL = Standard Level
English language requirements: W = Writing, R = Reading, L = Listening, S = Speaking

Environmental Science

Award	UCAS course code	Type	Duration ¹	Entry requirements			
BSc (Hons)	F850	Single	3 years	A-level²	International Baccalaureate	GCSE	English language
URL	Year Abroad	Entry month	Related courses	ABB. This must include at least one of the following subjects: Biology, Chemistry, Physics, Mathematics, Geography, Geology, Psychology, Environmental Studies or Environmental Science			
qmul.ac.uk/F850	F851	September					
					32 points, 655 at HL to include at least one of the following subjects: Biology, Chemistry, Physics, Mathematics, Geography, Geology, Psychology, Environmental Studies or Environmental Science	5 GCSE passes, English at C/4	6.5 overall, 6.0 in W, 5.5 in R, L, S

Environmental Science with Business Management

Award	UCAS course code	Type	Duration ¹	Entry requirements			
BSc (Hons)	F8N2	Major/Minor	3 years	A-level²	International Baccalaureate	GCSE	English language
URL	Year Abroad	Entry month	Related courses	ABB. This must include at least one of the following subjects: Biology, Chemistry, Physics, Mathematics, Geography, Geology, Psychology, Environmental Studies or Environmental Science			
qmul.ac.uk/F8N2	F8NY	September					
					32 points, 655 at HL to include at least one of the following subjects: Biology, Chemistry, Physics, Mathematics, Geography, Geology, Psychology, Environmental Studies or Environmental Science	5 GCSE passes, English at C/4	6.5 overall, 6.0 in W, 5.5 in R, L, S

*Programme subject to approval.

¹Programmes with an integrated foundation year, year abroad or industrial/professional experience option will be one year longer in duration. Please note that programmes that include a modern foreign language or the Language and Culture theme on the BA Liberal Arts will require a year abroad.

²General Studies and Critical Thinking A-levels are not accepted as part of our entry requirements.

This information is accurate at the time of publishing. Please see our website for the most up-to-date information.

Film Studies

At Queen Mary, you'll learn from filmmakers and academics at the cutting edge of their field. You'll explore the history and theory of the cinema, while also learning the technical and practical aspects of film production.

A well-rounded programme

Film studies demands creative, original thought – asking you to question, for example, how class, race, ethnicity and sexuality are represented on the screen.

Our practical modules also introduce you to the creative and technical skills required for scriptwriting, production managing, directing and editing.

Our London location

We're based in the heart of the East End, close to the creative and media quarters in Hoxton, Shoreditch and Spitalfields. The Department houses facilities including a state-of-the-art cinema space, a film production suite, two film studios with professional lighting grids, two edit suites and motion capture equipment.

London is a thriving hub of film and cinema culture. It's home to the British Film Institute (BFI) and the London Film Festival and, with many film and television productions based here, you can gain valuable experience alongside your studies.

We have close links with local communities, festivals and organisations, including regular collaboration with the UK Asian Film Festival.

Academic expertise

Our world-renowned academics regularly publish field-defining books and take part in events at the BFI, Barbican and Tate. Our Autism through Cinema project within the Centre of Film and Ethics, supported by the Wellcome Trust, promotes an understanding of autism

as a condition with benefits. The project seeks to deepen knowledge of neurodiverse experience through the optic of body language, its historical crafting in medical and commercial film, and its recreation in film form.

Our Film Cultures research centre is a leader in the fields of film history, film cultures and national cinemas. Areas of expertise include the cultures and industries of British, Chinese, French, Indian, Russian and US cinemas.

Joint programmes

Film studies' mixture of theory, practice, history and languages makes it a natural partner for several subjects. You may choose to study it jointly with comparative literature, drama,

English, French, German, Hispanic studies or Russian.

Joint programmes involving a modern language include a required Year Abroad, and all film studies students may choose to take a Year Abroad as part of their degree.

Where could film studies take you?

Film studies prepares you for careers in film, television, and the creative arts, or you can continue in academic study

with our masters route. You'll graduate with an excellent knowledge base and a range of transferable analytical, research and communication skills.

Graduates have found work as artistic/film directors, cinematographers, digital editors, dubbing coordinators, short film producers and post production runners, with companies such as Equinox Film and TV Production, SALT. TV, Walks of Life Films, Pocket Blockbuster and Fremantle.

Learn more



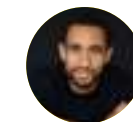
About the
School



About the
Department



About the
subject



Our
alumni

I was lucky at Queen Mary to have amazing lecturers who had practical experience in the filmmaking world and who were really interested in what I was doing. As a student, I got the sense that they were passionate about what they were teaching, and they were really interested in the students and took time to explain things to you.

**Matt Kay, Documentary director,
BA Film Studies (2011)**



Student's
view

I have always had a passion for the practical aspects of film – what goes on behind the scenes, like cinematography and editing, but I'm also interested in loftier discussions and discourses around what cinema is, can do and where it came from. Film courses that have a nice balance of both practical and theory like this are few and far between. Therefore, Queen Mary was the perfect fit for me.

**David Olaniregun, BA Film
Studies (final year)**

Degree programmes

International Baccalaureate requirements: HL = Higher Level, SL = Standard Level
English language requirements: W = Writing, R = Reading, L = Listening, S = Speaking

Comparative Literature and Film Studies

Award	UCAS course code	Type	Duration ¹	Entry requirements			
BA (Hons)	QP23	Joint	3 years	A-level²	International Baccalaureate	GCSE	English language
URL	Year Abroad	Entry month	Related courses	ABB, including at least one essay-based subject in humanities or social sciences			
qmul.ac.uk/QP23	QP2Y	September					
				32 points, 655 at HL including an essay-based humanities or social sciences subject	5 GCSE passes, English at C/4	7.0 overall, 7.0 in W, 5.5 in R, L, S	

English and Film Studies

Award	UCAS course code	Type	Duration ¹	Entry requirements			
BA (Hons)	QW36	Joint	3 years	A-level²	International Baccalaureate	GCSE	English language
URL	Year Abroad	Entry month	Related courses	ABB, including A or above in English Literature, English Language and Literature or English Language			
qmul.ac.uk/QW36	QW6Y	September					
				32 points, 655 at HL including a minimum of 6 in HL English A	5 GCSE passes, English at C/4	7.0 overall, 6.5 in W, 5.5 in R, L, S	

Film Studies

Award	UCAS course code	Type	Duration ¹	Entry requirements			
BA (Hons)	P303	Single	3 years	A-level²	International Baccalaureate	GCSE	English language
URL	Year Abroad	Entry month	Related courses	ABB, including at least one essay-based subject in humanities or social sciences			
qmul.ac.uk/P303	P30Y	September					
				32 points, 655 at HL including an essay-based humanities or social sciences subject	5 GCSE passes, English at C/4	7.0 overall, 7.0 in W, 5.5 in R, L, S	

Film Studies and Drama

Award	UCAS course code	Type	Duration ¹	Entry requirements			
BA (Hons)	WW46	Joint	3 years	A-level²	International Baccalaureate	GCSE	English language
URL	Year Abroad	Entry month	Related courses	ABB, including at least one essay-based subject in humanities or social sciences			
qmul.ac.uk/WW46	WW4Y	September					
				32 points, 655 at HL including a minimum of 6 in at least one arts, humanities or social sciences subject at HL and an essay-based humanities or social sciences subject at HL	5 GCSE passes, English at C/4	7.0 overall, 6.5 in W, 5.5 in R, L, S	

Film Studies and French

Award	UCAS course code	Type	Duration ¹	Entry requirements			
BA (Hons)	RW16	Joint	4 years	A-level²	International Baccalaureate	GCSE	English language
URL	Year Abroad	Entry month	Related courses	BBB, including at least one essay-based subject in humanities or social sciences	30 points, 555 at HL including an essay-based humanities or social sciences subject	5 GCSE passes, English at C/4	7.0 overall, 7.0 in W, 5.5 in R, L, S
qmul.ac.uk/RW16	Yes	September					

Film Studies and German

Award	UCAS course code	Type	Duration ¹	Entry requirements			
BA (Hons)	RW26	Joint	4 years	A-level²	International Baccalaureate	GCSE	English language
URL	Year Abroad	Entry month	Related courses	BBB, including at least one essay-based subject in humanities or social sciences	30 points, 555 at HL including an essay-based humanities or social sciences subject	5 GCSE passes, English at C/4	7.0 overall, 7.0 in W, 5.5 in R, L, S
qmul.ac.uk/RW26	Yes	September					

Film Studies and Hispanic Studies

Award	UCAS course code	Type	Duration ¹	Entry requirements			
BA (Hons)	RW46	Joint	4 years	A-level²	International Baccalaureate	GCSE	English language
URL	Year Abroad	Entry month	Related courses	BBB, including at least one essay-based subject in humanities or social sciences	30 points, 555 at HL including an essay-based humanities or social sciences subject	5 GCSE passes, English at C/4	7.0 overall, 7.0 in W, 5.5 in R, L, S
qmul.ac.uk/RW46	Yes	September					

Film Studies and Russian

Award	UCAS course code	Type	Duration ¹	Entry requirements			
BA (Hons)	RW77	Joint	4 years	A-level²	International Baccalaureate	GCSE	English language
URL	Year Abroad	Entry month	Related courses	BBB, including at least one essay-based subject in humanities or social sciences	30 points, 555 at HL including an essay-based humanities or social sciences subject	5 GCSE passes, English at C/4	7.0 overall, 7.0 in W, 5.5 in R, L, S
qmul.ac.uk/RW77	Yes	September					

Liberal Arts

Award	UCAS course code	Type	Duration ¹	Entry requirements			
BA (Hons)	V901	Joint	3 years	A-level²	International Baccalaureate	GCSE	English language
URL	Year Abroad	Entry month	Related courses	BBB, including at least one essay-based subject in humanities or social sciences	30 points, 555 at HL including an essay-based humanities or social sciences subject	5 GCSE passes, English at C/4	7.0 overall, 7.0 in W, 5.5 in R,L,S
qmul.ac.uk/V901	V902	September	Year with Industrial Experience/ Professional Placement - V903				

*Programme subject to approval.

¹Programmes with an integrated foundation year, year abroad or industrial/professional experience option will be one year longer in duration. Please note that programmes that include a modern foreign language or the Language and Culture theme on the BA Liberal Arts will require a year abroad.

²General Studies and Critical Thinking A-levels are not accepted as part of our entry requirements.

This information is accurate at the time of publishing. Please see our website for the most up-to-date information.

Geography

Geography's unique concern with how our social and physical environments interact puts it at the forefront of many pressing global challenges, including climate change, sustainable development, international migration, and global health.

Our programmes

At Queen Mary, our range of programmes encompass the human and physical aspects of geography. Our degrees in BA/ BSc Geography enable you to flexibly choose modules focusing on the study of physical or human geography, depending on your interests.

Our BA Human Geography is one of the few specialist human geography degrees available in the UK, and our new BA Global Development challenges the common use of Western historical experiences as the universal templates against which the rest of the world is measured.

We offer exceptional laboratory facilities and a range of exciting fieldwork opportunities*, allowing students to apply their

theoretical knowledge in a practical setting.

Academic expertise

Our academic work challenges the world around us, and the work feeds into our teaching too. The School is very proud of having led on the research that underpinned the UK Living Wage Campaign, and students have had the opportunity to get involved with research projects conducted within the School and effect real change in the world around them.

Together, our commitment to progressive change and to a 'hands-on' geographical education equips our students with a uniquely geographical way of seeing and understanding the world and a broad skill set that is highly sought after by employers.

Our modules examine some of the most pressing concerns of our time: you could study topics ranging from economic geography to environmental pollution, and from flood risk management to volcanoes, climate change and society. As such, you'll graduate with a well-rounded understanding of the world around you.

You'll benefit from working with academic staff whose research sits at the cutting edge of the discipline and who bring this expertise to the classroom.

Joint programmes

Our BSc Geography with Business Management lets you add to your geographical education with a focus on key business skills. Alongside modules on development,

international migration, urbanisation, or global health, for example, you will take a range of business modules on economics for business, management, marketing, financial accounting and human resources.

Where could geography take you?

Geography gives you a unique range of subject-specific and transferable skills, including data collection and analysis,

the interpretation and evaluation of complex ideas and evidence, and individual and group project management.

These skills are valuable in almost any career and are essential for graduates who choose further study or change careers via professional conversion courses.

Recent graduates have found work at Deloitte, KPMG, Heal Rewilding, and the United Nations.



Our alumni

I loved how different all my modules were – from Health Geographies to Geographies of Nature, and Historical Geography. It really is a degree for people wanting to study everything.

Katie Momber,
Sustainability Specialist at the
Institution of Civil Engineers, BA
Human Geography (2016)



Student's view

My degree has pushed and challenged me, developing both myself and my skills. It has enabled me to view the world differently, and believe in myself to achieve my goals.

Erran Hussain,
BA Geography (3rd year)

*Fieldwork destinations and opportunities may vary year-on-year and are subject to change and discontinuation.

Learn more



About the
School



About the
subject



About our
programmes

Degree programmes

International Baccalaureate requirements:

HL = Higher Level, SL = Standard Level

English language requirements:

W = Writing, R = Reading, L = Listening, S = Speaking

Geography

Award	UCAS course code	Type	Duration ¹	Entry requirements			
BA (Hons)	L700	Single	3 years	A-level²	International Baccalaureate	GCSE	English language
URL	Year Abroad	Entry month	Related courses	ABB. Geography or a relevant subject preferred	32 points, 655 at HL. Geography or a relevant subject at HL preferred	5 GCSE passes, English at C/4	7.0 overall, 6.5 in W, 5.5 in R, L, S
qmul.ac.uk/L700	L701	September					

Geography

Award	UCAS course code	Type	Duration ¹	Entry requirements			
BSc (Hons)	F800	Single	3 years	A-level²	International Baccalaureate	GCSE	English language
URL	Year Abroad	Entry month	Related courses	ABB. Geography or a relevant subject preferred	32 points, 655 at HL. Geography or a relevant subject at HL preferred	5 GCSE passes, English at C/4	7.0 overall, 6.5 in W, 5.5 in R, L, S
qmul.ac.uk/F800	F801	September					

Geography with Business Management

Award	UCAS course code	Type	Duration ¹	Entry requirements			
BSc (Hons)	FVN1	Major/Minor	3 years	A-level²	International Baccalaureate	GCSE	English language
URL	Year Abroad	Entry month	Related courses	ABB. Geography or a relevant subject preferred	32 points, 655 at HL. Geography or a relevant subject at HL preferred	5 GCSE passes, English at C/4	7.0 overall, 6.5 in W, 5.5 in R, L, S
qmul.ac.uk/FVN1	FVNY	September					

Global Development

Award	UCAS course code	Type	Duration ¹	Entry requirements			
BA (Hons)	L750	Single	3 years	A-level²	International Baccalaureate	GCSE	English language
URL	Year Abroad	Entry month	Related courses	ABB at A-level. Geography and/or Politics preferred	34 points, 655 at HL	5 GCSE passes, English and Maths at C/4	7.0 overall, 6.5 in W, 5.5 in R, L, S
qmul.ac.uk/L750	-	September					

Human Geography

Award	UCAS course code	Type	Duration ¹	Entry requirements			
BA (Hons)	L720	Single	3 years	A-level²	International Baccalaureate	GCSE	English language
URL	Year Abroad	Entry month	Related courses	ABB. Geography or a relevant subject preferred	32 points, 655 at HL. Geography or a relevant subject at HL preferred	5 GCSE passes, English at C/4	7.0 overall, 6.5 in W, 5.5 in R, L, S
qmul.ac.uk/L720	L72Y	September					

*Programme subject to approval.

¹Programmes with an integrated foundation year, year abroad or industrial/professional experience option will be one year longer in duration. Please note that programmes that include a modern foreign language or the Language and Culture theme on the BA Liberal Arts will require a year abroad.

²General Studies and Critical Thinking A-levels are not accepted as part of our entry requirements.

This information is accurate at the time of publishing. Please see our website for the most up-to-date information.

History

Our exceptional choice of modules means you can construct a degree that's tailored to your interests. As a result, our undergraduate historians are consistently among the most satisfied in the prestigious Russell Group.

A diverse offering

The School of History was founded in 1912 to deliver world-class education and research. More than a century later, we continue to combine these crucial elements of the historian's craft. Our students and staff work together to develop their expertise about the past and understand their responsibilities to the present and the future, through an increasingly diverse range of historical periods, figures and outlooks.

Our module range covers topics spanning continents and millennia, so our staff and students can pursue their passions while continuing to explore new areas of history.

Your student experience

From the day you join the School of History, you'll get one-to-one

supervision in the shape of an academic advisor and this support will remain with you until your final-year dissertation – the culmination of your time with us.

Teaching is by a mixture of larger classes and small, highly-interactive seminars.

Assessment varies from module to module but is usually through a mixture of essays, presentations, source analysis and take-home exams.

At Queen Mary, you'll experience the real benefits of studying history in London. Key historical sites, museums and archives are just a short tube journey away. Our social groups such as the History Society and Public History Unit regularly invite speakers to

campus, or run trips to historical sites across London.

Where could history take you?

Studying history allows you to keep your options open: you'll explore existing passions while developing key writing, presentation and analytical skills. The broad range of skills acquired by studying history, coupled with extracurricular opportunities, prepares you for success in a diverse range of careers. History graduates can apply their knowledge directly to careers in museums, education or the arts and heritage sector. Other less traditional career pathways include the Civil Service, marketing or retail.

What are we up to?

Our staff contribute to national and international cultural life,

helping to shape the debates that animate society – whether through high-profile media appearances and the curation of exhibitions, or by working with public bodies and government agencies to promote the understanding and importance of history to our lives.

Professor Amanda Vickery wrote and presented two prestigious BBC television series based on her research – *The Story of*

Women and Art and *Suffragettes Forever: The Story of Women and Power* – highlighting the role of women in art and politics, and attracting a global audience. Dr Tom Asbridge wrote and presented a BBC Two documentary based on his bestselling biography of the celebrated medieval knight, William Marshal, drawing in millions of viewers and winning praise from the likes of *The Guardian* and *The Times*.

Learn more



About
BA History



About our
modules



Our alumni

With my degree, writing, research, analysis and being able to form persuasive arguments are skills that I learned that are really important in my everyday life – all these skills are transferrable and are crucial for most jobs out there.

Annie Andoh,
Social Media Manager
at V&A Museum, London,
BA History (2012)



Our alumni

The large variety of history modules that Queen Mary offers was a main factor as to why I chose to study here. The campus environment makes the bustling city of London feel welcoming and accessible.

Priya Bahi,
BA History (2020)

Degree programmes

International Baccalaureate requirements:

HL = Higher Level, SL = Standard Level

English language requirements:

W = Writing, R = Reading, L = Listening, S = Speaking

Cultural History

Award	UCAS course code	Type	Duration ¹	Entry requirements			
BA (Hons)	V142	Single	3 years	A-level²	International Baccalaureate	GCSE	English language
URL	Year Abroad	Entry month	Related courses	ABB	32 points, 655 at HL	5 GCSE passes, English at C/4	7.0 overall, 6.5 in W, 5.5 in R, L, S
qmul.ac.uk/V142	V143	September					

History

Award	UCAS course code	Type	Duration ¹	Entry requirements			
BA (Hons)	V101	Single	3 years	A-level²	International Baccalaureate	GCSE	English language
URL	Year Abroad	Entry month	Related courses	ABB	32 points, 655 at HL	5 GCSE passes, English at C/4	7.0 overall, 6.5 in W, 5.5 in R, L, S
qmul.ac.uk/V101	V111	September					

History and International Relations*

Award	UCAS course code	Type	Duration ¹	Entry requirements			
BA (Hons)	VL01	Joint	3 years	A-level²	International Baccalaureate	GCSE	English language
URL	Year Abroad	Entry month	Related courses	ABB	32 points, 655 at HL	5 GCSE passes, English at C/4	7.0 overall, 6.5 in W, 5.5 in R, L, S
qmul.ac.uk/VL01	VL02	September					

History and Politics

Award	UCAS course code	Type	Duration ¹	Entry requirements			
BA (Hons)	LV21	Joint	3 years	A-level²	International Baccalaureate	GCSE	English language
URL	Year Abroad	Entry month	Related courses	ABB	32 points, 655 at HL	5 GCSE passes, English at C/4	7.0 overall, 6.5 in W, 5.5 in R, L, S
qmul.ac.uk/LV21	LV20	September					

Modern and Contemporary History

Award	UCAS course code	Type	Duration ¹	Entry requirements			
BA (Hons)	V140	Single	3 years	A-level²	International Baccalaureate	GCSE	English language
URL	Year Abroad	Entry month	Related courses	ABB	32 points, 655 at HL	5 GCSE passes, English at C/4	7.0 overall, 6.5 in W, 5.5 in R, L, S
qmul.ac.uk/V140	V141	September					

*Programme subject to approval.

¹Programmes with an integrated foundation year, year abroad or industrial/professional experience option will be one year longer in duration. Please note that programmes that include a modern foreign language or the Language and Culture theme on the BA Liberal Arts will require a year abroad.

²General Studies and Critical Thinking A-levels are not accepted as part of our entry requirements.

This information is accurate at the time of publishing. Please see our website for the most up-to-date information.

Law

Our expert academics will support you to achieve your goals by combining rigorous knowledge and practical skills. This is enhanced by projects that enable you to experience law in a professional context.

Our programmes

In addition to our LLB Law programme, we offer several undergraduate law programmes, including two joint programmes: Law and Politics, and Law with Business. Law and Politics is designed for anyone pursuing a career that requires a solid understanding of both legal and governmental systems and should especially appeal to students wanting to study public policy in its legal context.

Extracurricular opportunities include our award-winning Legal Advice Centre, which provides free legal advice to the public and Queen Mary staff and students, and the George Hinde Moot Competition. These give you the chance to put your knowledge into practice, while

instilling the values of legal ethics at this early stage in your career.

Law with Business gives you the opportunity to study the aspects of law and business that interest you most, such as contract law, intellectual property and management of human resources.

Our value-added programmes offer students a chance to enrich their studies with practical skills. Law in Practice* includes a third-year paid internship. English and French Law is run jointly with Paris 1 Panthéon-Sorbonne University, and your third and fourth years are spent in Paris. English and European Law includes a year of studying abroad in a European

country. Global Law includes a year studying abroad at one of our international partner universities.

The School of Law will also be launching a new LLB Climate Justice programme for the 2023/24 academic year.

Internationally renowned research

Our research has a global reputation and is driven by the demands for social justice. These activities range from undertaking innovative research with high-profile NGOs such as Doctors without Borders (Médecins Sans Frontières) and Women's Aid, to informing reports of human rights abuses for the United Nations and monitoring the migrant rescue

boats in the Mediterranean. This work is world-renowned and transforms lives around the globe.

Where could law take you?

An LLB degree is highly regarded around the world and is a gateway to a wide variety of careers. There are multiple career paths available to law graduates, and our range of undergraduate programmes develop valuable technical and transferable skills, including

critical analysis and problem solving.

Many of our graduates have progressed to qualify and practise as solicitors and barristers in England and Wales, as well as other jurisdictions. Our alumni have also gone on to roles in a broad range of professions, such as compliance and regulation, the public sector, legal publishing, financial services, journalism, policy, NGOs and charitable bodies.

Learn more



About the
School



Take a virtual tour
of our building



Student's view

This is an excellent place to study with a vibrant community and wide range of activities on campus. You are taught by experienced academics who provide students with a comprehensive understanding of the law and how legal professionals apply it in practice. They also offer great opportunities to kickstart your career.

Osama, LLB Law (3rd year)



Ranked **29th best law school** in the world.

QS World University Rankings by Subject, 2022

*Applications for this programme are open to first-year Law undergraduates only.

Degree programmes

International Baccalaureate requirements:

HL = Higher Level, SL = Standard Level

English language requirements:

W = Writing, R = Reading, L = Listening, S = Speaking

English and European Law

Award	UCAS course code	Type	Duration ¹	Entry requirements			
LLB (Hons)	M120	Single	4 years	A-level²	International Baccalaureate	GCSE	English language
URL	Year Abroad	Entry month	Related courses	A* AA	36 points overall, 666 at HL	AAAABB or 777766 including English and Mathematics	7.0 overall, 6.5 in W, 5.5 in R, L, S
qmul.ac.uk/M120	Yes	September					

English and French Law

Award	UCAS course code	Type	Duration ¹	Entry requirements			
LLB (Hons)	M106	Single	4 years	A-level²	International Baccalaureate	GCSE	English language
URL	Year Abroad	Entry month	Related courses	A* AA, including French (or Diplôme d'Etudes en Langue Française (DELF), the French Studies Diploma, at B2 Level). Eligible applicants will be interviewed	36 points overall, 666 at HL including French (or DELF at B2 Level)	AAAABB or 777766 including English and Mathematics	7.0 overall, 6.5 in W, 5.5 in R, L, S
qmul.ac.uk/M106	Yes	September					

Global Law

Award	UCAS course code	Type	Duration ¹	Entry requirements			
LLB (Hons)	M105	Single	4 years	A-level²	International Baccalaureate	GCSE	English language
URL	Year Abroad	Entry month	Related courses	A* AA	36 points overall, 666 at HL	AAAABB or 777766 including English and Mathematics	7.0 overall, 6.5 in W, 5.5 in R, L, S
qmul.ac.uk/M105	Yes	September					

Law

Award	UCAS course code	Type	Duration ¹	Entry requirements			
LLB (Hons)	M100	Single	3 years	A-level²	International Baccalaureate	GCSE	English language
URL	Year Abroad	Entry month	Related courses	A* AA	36 points overall, 666 at HL	AAAABB or 777766 including English and Mathematics	7.0 overall, 6.5 in W, 5.5 in R, L, S
qmul.ac.uk/M100	-	September					

Law and Politics

Award	UCAS course code	Type	Duration ¹	Entry requirements			
LLB (Hons)	ML13	Joint	3 years	A-level ²	International Baccalaureate	GCSE	English language
URL	Year Abroad	Entry month	Related courses	A* AA 36 points overall, 666 at HL AAAABB or 777766 including English and Mathematics 7.0 overall, 6.5 in W, 5.5 in R, L, S			
qmul.ac.uk/ML13	-	September					

Law Senior Status

Award	UCAS course code	Type	Duration ¹	Entry requirements			
LLB (Hons)	M101	Single	2 years	A-level ²	International Baccalaureate	GCSE	English language
URL	Year Abroad	Entry month	Related courses	2:1 honours degree or equivalent - - 7.0 overall, 6.5 in W, 5.5 in R, L, S			
qmul.ac.uk/M101	-	September					

Law with Business

Award	UCAS course code	Type	Duration ¹	Entry requirements			
LLB (Hons)	M1N1	Major/Minor	3 years	A-level ²	International Baccalaureate	GCSE	English language
URL	Year Abroad	Entry month	Related courses	A* AA 36 points overall, 666 at HL AAAABB or 777766 including English and Mathematics 7.0 overall, 6.5 in W, 5.5 in R, L, S			
qmul.ac.uk/M1N1	-	September					

*Programme subject to approval.
¹Programmes with an integrated foundation year, year abroad or industrial/professional experience option will be one year longer in duration. Please note that programmes that include a modern foreign language or the Language and Culture theme on the BA Liberal Arts will require a year abroad.
²General Studies and Critical Thinking A-levels are not accepted as part of our entry requirements.

This information is accurate at the time of publishing. Please see our website for the most up-to-date information.

Linguistics

Our Department of Linguistics is one of the largest in the UK and is exceptionally broad-based. You'll be taught by experts and leaders in their fields, seeing how linguistics applies to the real world.

Wide-ranging expertise

Research and teaching cover the major branches of linguistics: formal syntax and semantics, experimental linguistics, and sociolinguistics, including gender and media linguistics.

You might find yourself studying a little-known language such as Fijian with a native speaker, collecting data on changing London English, designing an experiment to measure phonological perception in bilingual children, or selecting features for a language of your own in a module on language construction.

Students can opt to concentrate on linguistics for a cross-language perspective; on English language for a deeper dive into

its history and varieties; or on English language and linguistics, the most flexible option.

Our Department has strong links and partnerships with national and international institutions: we've hosted UK Language Variation and Change and the International Gender and Language Association.

Our research

London's multilingual and multidialectal character makes it an exciting and challenging place to study linguistics. Our location adds real benefits to students' fieldwork, with chances to see their studies in practice in the real world.

Multicultural London English (MLE) is the successor to

Cockney as a popular dialect in east London, and sociolinguistics researchers at Queen Mary have been studying it together with community speakers for more than 15 years.

Our researchers have verified the existence of a new pronoun, 'man', new pronunciations and many other linguistic innovations that have emerged in multilingual areas of London. The research shows that MLE is different lexically, phonetically and syntactically from Cockney and other southern English dialects. In fact, it represents a new and continuously evolving system.

Joint programmes

Linguistics pairs naturally with the study of other languages and

literature. Students may choose to study linguistics jointly with comparative literature, English literature, French, German, Hispanic Studies or Russian.

Joint programmes involving a modern language include a required Year Abroad, and all linguistics students may choose to take a Year Abroad as part of their degree.

Where could linguistics take you?

Because linguistics combines natural sciences, social sciences and humanities, our graduates

are employed in many different sectors.

Recent graduates have gone on to work in software, consulting, research, marketing, social media, translation and localisation, and journalism, and for companies including BBC London, the Cabinet Office, Teach First and RandomStorm.

We have alumni in the private sector, government and NGOs, as well as a number who successfully pursue more strictly defined paths in teaching, training and healthcare.

Learn more



About the
School



About the
Department



About the
subject

“



Our
alumni

Being taught by leaders in your field of study is a huge privilege, and something to take full advantage of. Alongside study there were lots of opportunities to discuss career aspirations – the careers team gave great guidance.

Jade Tolley,
Brand Manager at Pan
Macmillan, BA English
Literature and Linguistics
(2014)



Student's
view

The best things about my course have been the engaging modules and enthusiastic lecturers who put their all into delivering interesting content. I always feel supported by my lecturers, as they are willing to help with any of the content and ensure I have a good understanding of it.

Jamie Rooke,
BA English Language and
Linguistics (2nd year)

Degree programmes

International Baccalaureate requirements: HL = Higher Level, SL = Standard Level
English language requirements: W = Writing, R = Reading, L = Listening, S = Speaking

Comparative Literature and Linguistics

Award	UCAS course code	Type	Duration ¹	Entry requirements			
BA (Hons)	QQ21	Joint	3 years	A-level²	International Baccalaureate	GCSE	English language
URL	Year Abroad	Entry month	Related courses	ABB, including at least one essay-based subject in humanities or social sciences			
qmul.ac.uk/QQ21	QQ2Y	September					

English Language

Award	UCAS course code	Type	Duration ¹	Entry requirements			
BA (Hons)	Q310	Single	3 years	A-level²	International Baccalaureate	GCSE	English language
URL	Year Abroad	Entry month	Related courses	ABB			
qmul.ac.uk/Q310	Q311	September					

English Language and Linguistics

Award	UCAS course code	Type	Duration ¹	Entry requirements			
BA (Hons)	QQH1	Joint	3 years	A-level²	International Baccalaureate	GCSE	English language
URL	Year Abroad	Entry month	Related courses	ABB			
qmul.ac.uk/QQH1	QQHY	September					

English Literature and Linguistics

Award	UCAS course code	Type	Duration ¹	Entry requirements			
BA (Hons)	QQ13	Joint	3 years	A-level²	International Baccalaureate	GCSE	English language
URL	Year Abroad	Entry month	Related courses	ABB, including A or above in English Literature, English Language and Literature or English Language			
qmul.ac.uk/QQ13	QQ1Y	September					

French and Linguistics

Award	UCAS course code	Type	Duration ¹	Entry requirements			
BA (Hons)	RQ11	Joint	4 years	A-level²	International Baccalaureate	GCSE	English language
URL	Year Abroad	Entry month	Related courses	BBB, including at least one essay-based subject in humanities or social sciences			
qmul.ac.uk/RQ11	Yes	September					

German and Linguistics

Award	UCAS course code	Type	Duration ¹	Entry requirements			
BA (Hons)	RQ21	Joint	4 years	A-level²	International Baccalaureate	GCSE	English language
URL	Year Abroad	Entry month	Related courses	BBB, including at least one essay-based subject in humanities or social sciences	30 points, 555 at HL including an essay-based humanities or social sciences subject	5 GCSE passes, English at C/4	7.0 overall, 7.0 in W, 5.5 in R, L, S
qmul.ac.uk/RQ21	Yes	September					

Hispanic Studies and Linguistics

Award	UCAS course code	Type	Duration ¹	Entry requirements			
BA (Hons)	RQ41	Joint	4 years	A-level²	International Baccalaureate	GCSE	English language
URL	Year Abroad	Entry month	Related courses	BBB, including at least one essay-based subject in humanities or social sciences	30 points, 555 at HL including an essay-based humanities or social sciences subject	5 GCSE passes, English at C/4	7.0 overall, 7.0 in W, 5.5 in R, L, S
qmul.ac.uk/RQ41	Yes	September					

Russian and Linguistics

Award	UCAS course code	Type	Duration ¹	Entry requirements			
BA (Hons)	QR71	Joint	4 years	A-level²	International Baccalaureate	GCSE	English language
URL	Year Abroad	Entry month	Related courses	BBB, including at least one essay-based subject in humanities or social sciences	30 points, 555 at HL including an essay-based humanities or social sciences subject	5 GCSE passes, English at C/4	7.0 overall, 7.0 in W, 5.5 in R, L, S
qmul.ac.uk/QR71	Yes	September					

Liberal Arts

Award	UCAS course code	Type	Duration ¹	Entry requirements			
BA (Hons)	V901	Joint	3 years	A-level²	International Baccalaureate	GCSE	English language
URL	Year Abroad	Entry month	Related courses	BBB, including at least one essay-based subject in humanities or social sciences	30 points, 555 at HL including an essay-based humanities or social sciences subject	5 GCSE passes, English at C/4	7.0 overall, 7.0 in W, 5.5 in R, L, S
qmul.ac.uk/V901	V902	September	Year with Industrial Experience/Professional Placement - V903				

Linguistics

Award	UCAS course code	Type	Duration ¹	Entry requirements			
BA (Hons)	Q100	Single	3 years	A-level²	International Baccalaureate	GCSE	English language
URL	Year Abroad	Entry month	Related courses	ABB	32 points, 655 at HL	5 GCSE passes, English at grade C/4	7.0 overall, 7.0 in W, 5.5 in R, L, S
qmul.ac.uk/Q100	Q101	September					

*Programme subject to approval.

¹Programmes with an integrated foundation year, year abroad or industrial/professional experience option will be one year longer in duration. Please note that programmes that include a modern foreign language or the Language and Culture theme on the BA Liberal Arts will require a year abroad.

²General Studies and Critical Thinking A-levels are not accepted as part of our entry requirements.

This information is accurate at the time of publishing. Please see our website for the most up-to-date information.

Mathematical Science

In the School of Mathematical Sciences, you'll learn from world-leading academics in a friendly, collaborative environment. We will nurture your passion for mathematics and help you succeed in your chosen career path.



Our
alumni

At Queen Mary, I made amazing, inspiring friends and was taught by lecturers who supported me. University teaches you so much, including technical knowledge, how to study, soft skills and more. But the most important thing you'll learn is about who you are and what you can achieve.

**Muhammed Ali Saleh,
Finance Business Analyst at
Dyson, BSc Mathematics with
Finance and Accounting (2017)**



With over 70 academic staff, we are **one of the largest mathematics departments** in the UK.

A vibrant community

Joining our School means you'll be joining a diverse, international community of like-minded, intellectually curious students, who use both logic and creativity to solve the problems of the 21st century.

It's a supportive community too, working together to achieve goals, with our world-leading academics here to inspire you and the opportunity to join our award-winning Mathematics Society.

We invest in our students, providing the perfect environment for them to thrive in. We are one of the largest departments in the UK, and our recently renovated Mathematical Sciences Building houses state-of-the-art facilities, teaching rooms and study spaces.

Additional opportunities

Maths students at Queen Mary have the opportunity to undertake a Professional Placement year, during which you'll spend one year on a paid work placement within an organisation, supported by the University. In recent years, our students have secured placements at EY, Goldman Sachs and Renault.

We also offer you the chance to gain valuable skills with an additional Year Abroad at one of our partner institutions. Current options include studying in Australia, Canada, France, Germany, Italy, Hong Kong, Malaysia, New Zealand, Singapore, South Korea and the USA.

Joint programmes

We offer two joint programmes with the School of Business and

Management - BSc Mathematics with Finance and Accounting, and BSc Mathematics with Management. Studying a joint programme gives you the benefit of diverse academic and practical experience while bringing together complementary subjects.

Where could a mathematical sciences degree take you?

You will have excellent career prospects with a BSc from Queen Mary. The latest data shows that 88 per cent* of our School of Mathematical Sciences graduates are in work or further study within six months of graduation. The average starting salary for our graduates within six months of graduation is £24,500*.

Our flexible and wide range of abstract and real-world programmes means you can

shape your own career path. In addition to postgraduate study and research, our graduates go on to work in a variety of roles, including financial investment analysts and advisers, chartered and certified accountants and business management professionals.

Our Actuarial Science programme is accredited by the Institute and Faculty of Actuaries (IFoA). Successful students

gain exemptions from up to six of the seven Core Principles examinations under the new IFoA Curriculum 2019.

Our alumni have gone on to join prestigious organisations such as Dyson, JP Morgan, PwC, KPMG and the Financial Conduct Authority.

*Source: Graduate Outcomes Survey 2018/19

Learn more



About our
programmes



Take a virtual
tour of our
building

Degree programmes

International Baccalaureate requirements:

HL = Higher Level, SL = Standard Level

English language requirements:

W = Writing, R = Reading, L = Listening, S = Speaking

Actuarial Science

Award	UCAS course code	Type	Duration ¹	Entry requirements			
BSc (Hons)	N323	Single	3 years	A-level²	International Baccalaureate	GCSE	English language
URL	Year Abroad	Entry month	Related courses	AAA including A in Mathematics	36 points, 666 at HL including Mathematics	5 GCSE passes, English at C/4 and Maths at B/5	6.0 overall, 5.5 in all components
qmul.ac.uk/N323	N32Y	September	<ul style="list-style-type: none"> Foundation - GGX2 Year with Industrial Experience/ Professional Placement - N32P 				

Financial Mathematics

Award	UCAS course code	Type	Duration ¹	Entry Requirements			
MSci (Hons)	GN1H	Single	4 years	A-level²	International Baccalaureate	GCSE	English language
URL	Year Abroad	Entry month	Related courses	AAA, including Mathematics	36 points, 666 at HL including Mathematics	5 GCSE passes, English at C/4 and Maths at B/5	6.0 overall, 5.5 in all components
qmul.ac.uk/GN1H	GNHY	September	Year with Industrial Experience/ Professional Placement - GN2H				

Mathematics

Award	UCAS course code	Type	Duration ¹	Entry requirements			
BSc (Hons)	G100	Single	3 years	A-level²	International Baccalaureate	GCSE	English language
URL	Year Abroad	Entry month	Related courses	ABB, including A or above in Mathematics	32 points, 655 at HL including Mathematics	5 GCSE passes, English at C/4 and Maths at B/5	6.0 overall, 5.5 in all components
qmul.ac.uk/G100	G10Y	September	<ul style="list-style-type: none"> Foundation - GGX2 Year with Industrial Experience/ Professional Placement - G101 				

Mathematics

Award	UCAS Course code	Type	Duration ¹	Entry requirements			
MSci (Hons)	G102	Single	4 years	A-level²	International Baccalaureate	GCSE	English language
URL	Year Abroad	Entry month	Related courses	AAA, including Mathematics	36 points, 666 at HL including Mathematics	5 GCSE passes, English at C/4 and Maths at B/5	6.0 overall, 5.5 in all components
qmul.ac.uk/G102	G12Y	September					

Mathematics and Statistics

Award	UCAS course code	Type	Duration ¹	Entry requirements			
BSc (Hons)	GG31	Joint	3 years	A-level²	International Baccalaureate	GCSE	English language
URL	Year Abroad	Entry month	Related courses	ABB, including A or above in Mathematics	32 points, 655 at HL including Mathematics	5 GCSE passes, English at C/4 and Maths at B/5	6.0 overall, 5.5 in all components
qmul.ac.uk/GG31	GG3Y	September	<ul style="list-style-type: none"> Foundation - GGX2 Year with Industrial Experience/ Professional Placement -GG32 				

Mathematics with Finance and Accounting

Award	UCAS course code	Type	Duration ¹	Entry requirements			
BSc (Hons)	G1N4	Major/Minor	3 years	A-level²	International Baccalaureate	GCSE	English language
URL	Year Abroad	Entry month	Related courses	ABB, including A or above in Mathematics	32 points, 655 at HL including Mathematics	5 GCSE passes, English at C/4 and Maths at B/5	6.0 overall, 5.5 in all components
qmul.ac.uk/G1N4	G14Y	September	<ul style="list-style-type: none"> Foundation - GGX2 Year with Industrial Experience/ Professional Placement - G1N6 				

Mathematics with Management

Award	UCAS course code	Type	Duration ¹	Entry requirements			
BSc (Hons)	G12N	Major/Minor	3 years	A-level²	International Baccalaureate	GCSE	English language
URL	Year Abroad	Entry month	Related courses	AAB, including A or above in Mathematics	34 points, 665 at HL including Mathematics	5 GCSE passes, English at C/4 and Maths at B/5	6.0 overall, 5.5 in all components
qmul.ac.uk/G12N	G13N	September	Year with Industrial Experience/ Professional Placement - G1NN				

*Programme subject to approval.

¹Programmes with an integrated foundation year, year abroad or industrial/professional experience option will be one year longer in duration. Please note that programmes that include a modern foreign language or the Language and Culture theme on the BA Liberal Arts will require a year abroad.

²General Studies and Critical Thinking A-levels are not accepted as part of our entry requirements.

This information is accurate at the time of publishing. Please see our website for the most up-to-date information.

Medicine

Medicine is a vocation and a way of life. It's about thinking of others and putting your patients first. At Queen Mary, you'll be taught by experts in their field who are passionately engaged with their subject.

A diverse curriculum

Queen Mary's Faculty of Medicine and Dentistry brings together two venerable teaching institutions: St Bartholomew's Hospital, which dates back to 1123, and The London Hospital Medical College, founded in 1785, is the oldest medical school in England and Wales. The hospitals lie in two very different parts of London, exposing you to a greater diversity of people and their health problems than at almost any other medical school in the UK. We also offer you the chance to study your MBBS degree in the Maltese islands, where our staff and students are contributing to the development of the health service for the region.

Our programme develops your expertise in a range of practical areas, including clinical,

communication, observation, teamwork and management skills. We have completely eliminated the traditional divide between preclinical studies and clinical years, which means that you will start seeing patients from your very first term. Our curriculum is taught through a series of modules that are based on body systems, which encompass various scientific and medical themes. Each body system is visited a minimum of three times during the programme.

Develop your own interests

Most students will have the opportunity to take an extra year of study leading to a Bachelor of Science (BSc) or Master of Science (MSc) degree. An intercalated degree, taken after successful completion of years

two, three or four will allow you to gain a greater insight into the natural or social sciences that underpin medicine and dentistry. You can choose from courses offering laboratory research experience or others providing specialised clinical and professional skills. An intercalated degree can give you a better understanding of your clinical studies, develop your interests in a particular field and broaden your career choices when you graduate.

One of the most interesting aspects of our MBBS programmes is your elective period in year five, which you will spend studying in the UK or abroad. The elective period is self-funded and its cost varies depending on length and location.

We're proud that the 2020 and 2021 National Student Surveys ranked us first in London for student satisfaction.

What are we up to?

Our students work side-by-side with world-leading research scientists and pioneers in public healthcare, helping to change the lives of people across the world.

During the Covid-19 pandemic, our staff and students volunteered to support the NHS, process Covid-19 tests, and print personal protective equipment. Our researchers also identified the first drug, the steroid dexamethasone, to improve survival rates in certain coronavirus patients as part of a clinical trial, and have been developing new studies to identify who is most at risk of contracting and becoming seriously ill with the disease.

Meanwhile, in our cancer research, a new type of drug that helps target chemotherapy at cancer cells has been found to significantly increase the survival of patients with the most common form of bladder cancer. Our researchers have also developed an easy-to-use smell test for Parkinson's, Alzheimer's and Covid-19, while another team led by Queen Mary developed an artificial intelligence (AI) tool that predicts diabetes risk by measuring fat around the heart.

Fifth choice programmes

Did you know that you can apply to a fifth (non-medical) course as well as four medical courses via UCAS? You can also apply directly to our MBBS Medicine Malta degree in addition to your four UCAS options.



Our alumni

As a student, you're exposed to clinical situations early on, and where learning communication skills is a primary focus of teaching, giving you a significant advantage amongst peers when you start building your portfolio for future specialisation. Ultimately, studying medicine at Queen Mary makes you a well-rounded clinician and, therefore, a better doctor to your patients.

Pedram Kordrostami, MBBS Medicine (2016), Junior Doctor (Clinical Fellow in Dermatology)



1st in London for medicine

Complete University Guide 2022

If you're looking for opportunities for your non-medicine UCAS fifth choice, the life sciences courses offered at Queen Mary could be the answer. Whether you aspire to solve medical or dental problems through the development of innovative technology and devices, become a laboratory scientist, or get involved in shaping healthcare policies, these programmes offer you exciting routes into careers that are shaping the future of global healthcare:

- Biochemistry BSc/MSci
- Biology BSc
- Biomedical Engineering BEng/MEng
- Biomedical Sciences BSc
- Chemistry BSc/MSci
- Medical Genetics BSc
- Neuroscience BSc
- Pharmaceutical Chemistry BSc/MSci
- Pharmacology and Innovative Therapeutics BSc
- Psychology BSc
- Zoology BSc

Learn more



About our
programme



About the
Faculty



Blizard Institute
Whitechapel campus

Medicine in London

 **Blizard Institute**
Whitechapel campus

Studying in London

Our scientific excellence and the unmatched medical opportunities that come from being in London puts us in an unrivalled position to offer you the very best experience as a student, shaping the sort of doctor you will become. Studying in the capital means learning at the forefront of modern medicine. Our students get to experience all the challenges and opportunities that come with providing healthcare in an incredibly busy and diverse city.

Situated next to The Royal London Hospital, one of the capital's leading trauma and emergency care centres and home to London's Air Ambulance, our medical School is perfectly located in Whitechapel. We also have a purpose-built Clinical and Communications Skills Centre at our West Smithfield campus (St Bartholomew's Hospital) for our medical students to practise

clinical methods and practical skills using mannequins and models.

The Centre is one of the most advanced of its kind and the first to be developed in the UK, which means you can develop the key communication skills you'll need with the help of specially trained actors who simulate patients and are able to give valuable feedback.

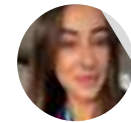
Clinical experience

You will develop your clinical skills through a variety of clinical attachments at The Royal London, St Bartholomew's and Homerton University hospitals, as well as further afield at hospitals in Greater London and Essex. Community general practice sessions are integrated into these hospital attachments, complementing your clinical skills teaching. This gives you useful practical experience within a diverse range of healthcare settings.

Learn more



Explore the
Whitechapel
campus



Student's view

If it weren't for my amazing Queen Mary family, the phenomenal support of all staff and the great pastoral care, I wouldn't be graduating as a doctor this year! You can tell a Queen Mary doctor when you meet one. We care, we're compassionate and we make people feel comfortable.

Theodora Hill,
MBBS Medicine Graduate Entry
(final year)

Medicine in Malta



**View from Queen Mary
Malta campus**
Gozo, Malta

Why study with us?

Our five-year programme offers you a curriculum and qualification identical to that taught at Queen Mary in London. That said, there are specific benefits when studying for a medical degree in Malta.

London curriculum, Mediterranean lifestyle

The core curriculum of MBBS Malta is identical to Queen Mary's existing MBBS in London (A100). This includes early in-depth clinical experience, problem-based learning (PBL), practical sessions in laboratories, and opportunities to undertake an intercalated undergraduate science degree at Queen Mary's London campus. There is the possibility to undertake student selected components (SSCs) in London, too.

You will take the same assessments at the same time as MBBS students in London, and, on successful completion of the five-year programme, you will be awarded a Medicine MBBS from Queen Mary University of London. The programme is taught by academic staff based in Malta. A number of our academics have taught in London for years and have now moved to Malta to deliver the same programme. In addition, a growing number of academics who have worked elsewhere in the world have specifically joined us in order to teach on the Malta course. As is

true on the London course, local clinicians are also employed throughout the year to deliver clinical teaching.

State-of-the-art facilities

Our state-of-the-art medical School is situated in Victoria, on the grounds of the Gozo General Hospital. Our facilities include a clinical simulation centre, communication skills suite, three large lecture theatres, two PC labs, seminar rooms, library, staff offices, a student common room, and a rooftop café.

A supportive community

Students at Queen Mary Malta form a tightly knit community with a great sense of camaraderie. This is also reflected in the small study groups which make personalised support and close mentoring possible.

Life on the island

The Queen Mary Malta campus is situated on the island of Gozo, a 25-minute ferry ride from the main island, Malta. Gozo is well-known for its splendid beaches, walks, cultural events, tranquillity and safety. Like Malta, it enjoys 300 days of sunshine a year, and the cost of living is low compared to London.

Applying to study in Malta

You apply directly to Queen Mary for the MBBS Medicine in Malta via our website. This means you can apply to Malta in addition to your four UCAS medicine choices.



Student's view

Having the opportunity to study abroad and to be part of a new community in Malta is particularly exciting. The course structure stands out with its variety of teaching methods, including traditional lecture styled teaching, clinically based teaching, practicals and problem-based learning.

**Marie-Sophie Gomm, MBBS
Malta (5th year)**

Learn more



About Queen
Mary in Malta



How to
apply

Degree programmes

International Baccalaureate requirements: HL = Higher Level, SL = Standard Level
English language requirements: W = Writing, R = Reading, L = Listening, S = Speaking

Please note that these are the minimum entry requirements we will consider, but, given the strong competition for places, they do not guarantee an offer of interview.

Medicine - Graduate Entry Programme (4 year)

Award	UCAS course code	Type	Duration ¹	Entry requirements			
MBBS	A101	Single	4 years	A-level ²	International Baccalaureate	GCSE	English language
URL	Year Abroad	Entry month	Related courses	For full details of the entry requirements, please visit qmul.ac.uk/A101			
qmul.ac.uk/A101	-	September					

Medicine (5 Year Programme)

Award	UCAS course code	Type	Duration ¹	Entry requirements			
MBBS	A100	Single	5 years	A-level ²	International Baccalaureate	GCSE	English language
URL	Year Abroad	Entry month	Related courses	A*AA including Biology or Chemistry, and a second science from Biology, Chemistry, Physics or Mathematics. Results must be achieved in one sitting over a period of no longer than two years	38 points, 666 at HL including Biology or Chemistry, and a second science or Mathematics	AAABBB or 777666 to include Biology (or Human Biology), Chemistry, English Language and Mathematics. The Science Double Award will also be considered	7.0 overall, 6.5 in W, 5.5 in R, L, S
qmul.ac.uk/A100	-	September					

Medicine (Malta, 5 Year Programme)

Award	UCAS course code	Type	Duration ¹	Entry requirements			
MBBS	A110	Single	5 years	A-level ²	International Baccalaureate	GCSE	English language
URL	Year Abroad	Entry month	Related courses	For full details of the entry requirements, please visit qmul.ac.uk/A110			
qmul.ac.uk/A110	-	September					

*Programme subject to approval.

¹Programmes with an integrated foundation year, year abroad or industrial/professional experience option will be one year longer in duration. Please note that programmes that include a modern foreign language or the Language and Culture theme on the BA Liberal Arts will require a year abroad.

²General Studies and Critical Thinking A-levels are not accepted as part of our entry requirements.

This information is accurate at the time of publishing. Please see our website for the most up-to-date information.

Growing up in Cambodia, **Lynda** always knew she wanted to be a doctor.

Lynda set her heart on studying medicine in the UK, wanting to foster her independence abroad. The odds were stacked against her, however, with only a small number of places allocated to international students in an already competitive course.

While researching universities, Lynda was struck by Queen Mary's commitment to diversity and social justice. She came across East London Genes & Health, a long-term study run by Queen Mary researchers that analyses the genes of local people of South Asian heritage in order to improve their health. "When I found out about that, I thought, here's a university that doesn't just say they care – they make real moves towards improving lives within their community."

When she missed out on an offer for medicine, Lynda instead studied biomedical science at another London university. In 2021, her patience and determination paid off when she won a place on the MBBS programme at Queen Mary.

Since joining Queen Mary, Lynda's made her own mark on the community: she takes part in volunteering programmes, working with local children, and aspires to specialise in paediatric medicine.

In her time here so far, Lynda has found a welcoming environment where you get out what you put in. "The community is so genuinely warm. I feel valued here, and in turn, I'm very proud to say that I go to this university."

Lynda Khun
MBBS Medicine
(1st year)



Modern Languages and Cultures

Our modern languages programmes focus on culture and identity alongside the workings of the languages themselves. You'll immerse yourself in language and culture, studying literature, film, and even philosophy, as much as grammar and translation.

Our programmes

You can study single and combined honours degrees involving our main language areas of French, German, Russian and Spanish, with Chinese and Portuguese also offered in combination with another language.

Our BA Modern Languages also offers the opportunity to study a third language as a minor subject, adding Catalan, Japanese and Modern Arabic to the mix.

You'll be encouraged to engage with the languages and cultures you study through different media and activities extending beyond the classroom.

Year Abroad

All of our modern languages programmes include a Year

Abroad. This experience is a big part of what makes studying modern languages such an enriching experience.

It's an opportunity to immerse yourself in a new culture and perfect your language skills. It also helps to develop transferable skills valued by employers, such as cross-cultural awareness, independence, problem solving and resilience.

Worldwide connections

Our strong connections with cultural and academic institutions worldwide ensure our research remains at the cutting edge. We work on the representation of French culture in close collaboration with London institutions such as Tate Modern and the Institut Français. Students of Catalan studies

benefit from our connections with the Institut Ramon Llull and the government of the Balearic Islands. Our links with German companies, such as BASF, support the study of Anglo-German cultural relations, while our relationship with the German-British Chamber of Industry and Commerce provides attractive career options for students.

Our School runs a number of events programmes including our long-standing Medieval Hispanic Research Seminars.

We also hold the UK's largest collections of Lusophone cinemas (Portuguese, Brazilian and Portuguese-Speaking African films), and conduct original research in Brazil's major social movements (quilombola

communities and the Theatre of the Oppressed).

Joint programmes

French, German, Hispanic Studies and Russian are all available as joint programmes with comparative literature, film studies, linguistics or politics. You can also study a modern language with business management, with 70 per cent of your studies devoted to your language.

Where could modern languages and culture take you?

Language skills and cultural

awareness can give you a real advantage in the job market, as well as opportunities to work in other countries. Some of our graduates apply their knowledge directly, entering careers in journalism, interpreting and teaching. Others transfer their skills into the arts, publishing, finance, business or IT.

Our recent graduates have been hired by Condé Nast, Kea Consultants, the League Managers Association, and Transport for London.

Learn more



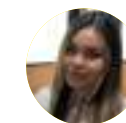
About the
School



About the
Department



About the
subject



Our alumni

I chose Queen Mary mainly due its reputation as a Russell Group university, the attractive programme structure and modules. The fact that I was given the liberty to also nominate some electives meant that I was able to explore other subjects such as Spanish, history of art and even coding.

Trisha Mason,
Senior Customer Success
Manager and Team Lead at
Darktrace, BA French with
Business Management (2018)



Student's view

I chose to study at Queen Mary because it is a top London university with a very down-to-earth approach. I really enjoy how well my classes are planned, how professional the teachers are and how the content is engaging on my programme.

Kacper Jarosz,
BA French and Hispanic
Studies (final year)

Degree programmes

International Baccalaureate requirements:

HL = Higher Level, SL = Standard Level

English language requirements:

W = Writing, R = Reading, L = Listening, S = Speaking

Film Studies and French

Award	UCAS course code	Type	Duration ¹	Entry requirements			
BA (Hons)	RW16	Joint	4 years	A-level²	International Baccalaureate	GCSE	English language
URL	Year Abroad	Entry month	Related courses	BBB, including at least one essay-based subject in humanities or social sciences			
qmul.ac.uk/RW16	Yes	September		30 points, 555 at HL including an essay-based humanities or social sciences subject			
				5 GCSE passes, English at C/4			
				7.0 overall, 7.0 in W, 5.5 in R, L, S			

Film Studies and German

Award	UCAS course code	Type	Duration ¹	Entry requirements			
BA (Hons)	RW26	Joint	4 years	A-level²	International Baccalaureate	GCSE	English language
URL	Year Abroad	Entry month	Related courses	BBB, including at least one essay-based subject in humanities or social sciences			
qmul.ac.uk/RW26	Yes	September		30 points, 555 at HL including an essay-based humanities or social sciences subject			
				5 GCSE passes, English at C/4			
				7.0 overall, 7.0 in W, 5.5 in R, L, S			

Film Studies and Hispanic Studies

Award	UCAS course code	Type	Duration ¹	Entry requirements			
BA (Hons)	RW46	Joint	4 years	A-level²	International Baccalaureate	GCSE	English language
URL	Year Abroad	Entry month	Related courses	BBB, including at least one essay-based subject in humanities or social sciences			
qmul.ac.uk/RW46	Yes	September		30 points, 555 at HL including an essay-based humanities or social sciences subject			
				5 GCSE passes, English at C/4			
				7.0 overall, 7.0 in W, 5.5 in R, L, S			

Film Studies and Russian

Award	UCAS course code	Type	Duration ¹	Entry requirements			
BA (Hons)	RW77	Joint	4 years	A-level²	International Baccalaureate	GCSE	English language
URL	Year Abroad	Entry month	Related courses	BBB, including at least one essay-based subject in humanities or social sciences			
qmul.ac.uk/RW77	Yes	September		30 points, 555 at HL including an essay-based humanities or social sciences subject			
				5 GCSE passes, English at C/4			
				7.0 overall, 7.0 in W, 5.5 in R, L, S			

French and Comparative Literature

Award	UCAS course code	Type	Duration ¹	Entry requirements			
BA (Hons)	RQ12	Joint	4 years	A-level²	International Baccalaureate	GCSE	English language
URL	Year Abroad	Entry month	Related courses	BBB, including at least one essay-based subject in humanities or social sciences	30 points, 555 at HL including an essay-based humanities or social sciences subject	5 GCSE passes, English at C/4	7.0 overall, 7.0 in W, 5.5 in R, L, S
qmul.ac.uk/RQ12	Yes	September					

French and Linguistics

Award	UCAS course code	Type	Duration ¹	Entry requirements			
BA (Hons)	RQ11	Joint	4 years	A-level²	International Baccalaureate	GCSE	English language
URL	Year Abroad	Entry month	Related courses	BBB, including at least one essay-based subject in humanities or social sciences	30 points, 555 at HL including an essay-based humanities or social sciences subject	5 GCSE passes, English at C/4	7.0 overall, 7.0 in W, 5.5 in R, L, S
qmul.ac.uk/RQ11	Yes	September					

French and Politics

Award	UCAS course code	Type	Duration ¹	Entry requirements			
BA (Hons)	LR21	Joint	4 years	A-level²	International Baccalaureate	GCSE	English language
URL	Year Abroad	Entry month	Related courses	ABB, including at least one essay-based subject in humanities or social sciences	32 points, 655 at HL including an essay-based humanities or social sciences subject.	5 GCSE passes, English at C/4	7.0 overall, 7.0 in W, 5.5 in R, L, S
qmul.ac.uk/LR21	Yes	September					

French with Business Management

Award	UCAS course code	Type	Duration ¹	Entry requirements			
BA (Hons)	R1N1	Major/Minor	4 years	A-level²	International Baccalaureate	GCSE	English language
URL	Year Abroad	Entry month	Related courses	ABB including at least one essay-based subject in humanities or social sciences	32 points, 655 at HL including an essay-based humanities or social sciences subject	5 GCSE passes, English at C/4	7.0 overall, 7.0 in W, 5.5 in R, L, S
qmul.ac.uk/R1N1	Yes	September					

German and Comparative Literature

Award	UCAS course code	Type	Duration ¹	Entry requirements			
BA (Hons)	QR22	Joint	4 years	A-level²	International Baccalaureate	GCSE	English language
URL	Year Abroad	Entry Month	Related courses	BBB, including at least one essay-based subject in humanities or social sciences	30 points, 555 at HL including an essay-based humanities or social sciences subject	5 GCSE passes, English at C/4	7.0 overall, 7.0 in W, 5.5 in R, L, S
qmul.ac.uk/QR22	Yes	September					

German and Linguistics

Award	UCAS course code	Type	Duration ¹	Entry requirements			
BA (Hons)	RQ21	Joint	4 years	A-level²	International Baccalaureate	GCSE	English language
URL	Year Abroad	Entry month	Related courses	BBB, including at least one essay-based subject in humanities or social sciences	30 points, 555 at HL including an essay-based humanities or social sciences subject	5 GCSE passes, English at C/4	7.0 overall, 7.0 in W, 5.5 in R, L, S
qmul.ac.uk/RQ21	Yes	September					

German and Politics

Award	UCAS course code	Type	Duration ¹	Entry requirements			
BA (Hons)	LR22	Joint	4 years	A-level²	International Baccalaureate	GCSE	English language
URL	Year Abroad	Entry month	Related courses	ABB, including at least one essay-based subject in humanities or social sciences	32 points, 655 at HL including an essay-based humanities or social sciences subject	5 GCSE passes, English at C/4	7.0 overall, 7.0 in W, 5.5 in R, L, S
qmul.ac.uk/LR22	Yes	September					

German with Business Management

Award	UCAS course code	Type	Duration ¹	Entry requirements			
BA (Hons)	R2N1	Major/Minor	4 years	A-level²	International Baccalaureate	GCSE	English language
URL	Year Abroad	Entry Month	Related courses	ABB, including at least one essay-based subject in humanities or social sciences	32 points, 655 at HL including one essay-based humanities or social science subject	5 GCSE passes, English at C/4	7.0 overall, 7.0 in W, 5.5 in R, L, S
qmul.ac.uk/R2N1	Yes	September					

Hispanic Studies and Comparative Literature

Award	UCAS course code	Type	Duration ¹	Entry requirements			
BA (Hons)	QR24	Joint	4 years	A-level²	International Baccalaureate	GCSE	English language
URL	Year Abroad	Entry month	Related courses	BBB, including at least one essay-based subject in humanities or social sciences	30 points, 555 at HL including an essay-based humanities or social sciences subject	5 GCSE passes, English at C/4	7.0 overall, 7.0 in W, 5.5 in R, L, S
qmul.ac.uk/QR24	Yes	September					

Hispanic Studies and Linguistics

Award	UCAS course code	Type	Duration ¹	Entry requirements			
BA (Hons)	RQ41	Joint	4 years	A-level²	International Baccalaureate	GCSE	English language
URL	Year Abroad	Entry month	Related courses	BBB, including at least one essay-based subject in humanities or social sciences	30 points, 555 at HL including an essay-based humanities or social sciences subject	5 GCSE passes, English at C/4	7.0 overall, 7.0 in W, 5.5 in R, L, S
qmul.ac.uk/RQ41	Yes	September					

Hispanic Studies and Politics

Award	UCAS course code	Type	Duration ¹	Entry requirements			
BA (Hons)	LR24	Joint	4 years	A-level²	International Baccalaureate	GCSE	English language
URL	Year Abroad	Entry month	Related courses	ABB, including at least one essay-based subject in humanities or social sciences	32 points, 655 at HL including an essay-based humanities or social sciences subject	5 GCSE passes, English at C/4	7.0 overall, 7.0 in W, 5.5 in R, L, S
qmul.ac.uk/LR24	Yes	September					

Hispanic Studies with Business Management

Award	UCAS course code	Type	Duration ¹	Entry requirements			
BA (Hons)	R4N1	Major/Minor	4 years	A-level²	International Baccalaureate	GCSE	English language
URL	Year Abroad	Entry month	Related courses	ABB, including at least one essay-based subject in humanities or social sciences	32 points, 655 at HL including one essay-based humanities or social science subject	5 GCSE passes, English at C/4	7.0 overall, 7.0 in W, 5.5 in R, L, S
qmul.ac.uk/R4N1	Yes	September					

Liberal Arts

Award	UCAS course code	Type	Duration ¹	Entry requirements			
BA (Hons)	V901	Joint	3 years	A-level²	International Baccalaureate	GCSE	English language
URL	Year Abroad	Entry month	Related courses	BBB, including at least one essay-based subject in humanities or social sciences	30 points, 555 at HL including an essay-based humanities or social sciences subject	5 GCSE passes, English at C/4	7.0 overall, 7.0 in W, 5.5 in R, L, S
qmul.ac.uk/V901	V902	September	Year with Industrial Experience/Professional Placement - V903				

Modern Languages

Award	UCAS course code	Type	Duration ¹	Entry requirements			
BA (Hons)	R900	Single	4 years	A-level²	International Baccalaureate	GCSE	English language
URL	Year Abroad	Entry month	Related courses	BBB including at least one essay-based subject. All other subjects offered as major languages may be studied from beginners' level, in either single or dual language combinations. In any dual language combination, applicants may not study more than one language from beginners' level	30 points, 555 at HL including an essay-based humanities or social sciences subject	5 GCSE passes, English at C/4. This must include GCSE French if that language is selected in any combination	7.0 overall, 7.0 in W, 5.5 in R, L, S
qmul.ac.uk/R900	Yes	September					

Russian and Comparative Literature

Award	UCAS course code	Type	Duration ¹	Entry requirements			
BA (Hons)	QR72	Joint	4 years	A-level²	International Baccalaureate	GCSE	English language
URL	Year Abroad	Entry month	Related courses	BBB, including at least one essay-based subject in humanities or social sciences	30 points, 555 at HL including an essay-based humanities or social sciences subject	5 GCSE passes, English at C/4	7.0 overall, 7.0 in W, 5.5 in R, L, S
qmul.ac.uk/QR72	Yes	September					

Russian and Linguistics

Award	UCAS course code	Type	Duration ¹	Entry requirements			
BA (Hons)	QR71	Joint	4 years	A-level²	International Baccalaureate	GCSE	English language
URL	Year Abroad	Entry month	Related courses	BBB, including at least one essay-based subject in humanities or social sciences	30 points, 555 at HL including an essay-based humanities or social sciences subject	5 GCSE passes, English at C/4	7.0 overall, 7.0 in W, 5.5 in R, L, S
qmul.ac.uk/QR71	Yes	September					

Russian and Politics

Award	UCAS course code	Type	Duration ¹	Entry requirements			
BA (Hons)	RL72	Joint	4 years	A-level²	International Baccalaureate	GCSE	English language
URL	Year Abroad	Entry month	Related courses	ABB, including at least one essay-based subject in humanities or social sciences	32 points, 655 at HL including an essay-based humanities or social sciences subject	5 GCSE passes, English at C/4	7.0 overall, 7.0 in W, 5.5 in R, L, S
qmul.ac.uk/RL72	Yes	September					

Russian with Business Management

Award	UCAS course code	Type	Duration ¹	Entry requirements			
BA (Hons)	R1N7	Major/Minor	4 years	A-level²	International Baccalaureate	GCSE	English language
URL	Year Abroad	Entry month	Related courses	ABB, including at least one essay-based subject in humanities or social sciences	32 points, 655 at HL including one essay-based subject or social sciences	5 GCSE passes, English at C/4	7.0 overall, 7.0 in W, 5.5 in R, L, S
qmul.ac.uk/R1N7	Yes	September					

^{*}Programme subject to approval.

¹Programmes with an integrated foundation year, year abroad or industrial/professional experience option will be one year longer in duration. Please note that programmes that include a modern foreign language or the Language and Culture theme on the BA Liberal Arts will require a year abroad.

²General Studies and Critical Thinking A-levels are not accepted as part of our entry requirements.

This information is accurate at the time of publishing. Please see our website for the most up-to-date information.

Physics and Astronomy

From finding our nearest exoplanet, Proxima b, to aiding in the discovery of the Higgs boson, the Department of Physics and Astronomy has long brought people together to make world-changing discoveries.

Our degrees combine academic rigour with a comprehensive programme of careers and employability activities, all within a friendly and supportive environment. All of our programmes are accredited by the Institute of Physics, which ensures consistently high academic standards.

You will be taught by academics working on high-profile international collaborations, including experiments at CERN, European Space Agency, NASA and the T2K Neutrino Experiment in Japan.

What are we up to?

During his time at Queen Mary, Dr Guillem Anglada-Escudé made it into *Time* magazine's list of the 100 most influential people, after leading a team of scientists

to discover a new planet orbiting our Solar System's nearest star, Proxima Centauri. Using facilities operated by the European Southern Observatory and other telescopes, the research revealed a world with a similar mass to Earth.

The planet, called Proxima b, orbits its parent star every 11 days and has a temperature suitable for liquid water to exist on its surface. It is slightly larger than Earth and is the closest planet outside our Solar System.

The discovery was quickly recognised as one of the most exciting in years and, as Dr Anglada-Escudé explained: "Succeeding in the search for the nearest terrestrial planet beyond our Solar System has been an experience of a lifetime,

and has drawn on the dedication and passion of a number of international researchers. We hope these findings inspire future generations to keep looking beyond the stars. The search for life on Proxima b comes next."

Where could physics and astronomy take you?

Our programmes are flexible, so you can pick modules in line with your preferred specialism – preparing you for careers in diverse fields of physics. The skills you'll develop – such as numeracy, data analysis, coding and problem solving – are also highly transferable into other sectors, including energy, business, marketing, engineering, technology, IT, and finance. Many graduates continue their studies with

an MSc and PhD, often as a precursor to a career in research.

Our new Data Science programmes have been designed specifically to answer the needs of industry. As companies, governments, non-profits, and research organisations begin to adjust to the massive amounts of data that are becoming available, graduates with a background in data science are increasingly in demand.

Students have the opportunity to develop Python programming

skills, learn how to apply advanced machine learning and artificial intelligence techniques, and gain insight from any kind of data using a toolkit of practical data analysis methods, alongside the core topics of a Physics degree.

Recent graduates of the Department of Physics and Astronomy have been employed by the UK Space Agency, JPMorgan Chase, European Astronaut Centre, Airbus and IBM.

Learn more



About our programmes



Take a virtual tour of our building



Our alumni

After graduating from Queen Mary, I completed a masters in Sustainable Energy Futures, followed by an internship as an energy market analyst at a grid-scale battery storage company. I am now a graduate project engineer at Vattenfall UK, and am part of two separate committees within the Energy Institute.

María Sánchez-Pinilla,
BSc Astrophysics (2017)



Student's view

I felt welcomed into the inclusive campus community the moment I arrived. I love all the opportunities that are available – through the Physics and Astronomy Society, I got to visit the European Space Research and Technology Centre in the Netherlands, which was very inspiring!

Ryan William Godden,
MSci Physics with Astrophysics (3rd year)

Degree programmes

International Baccalaureate requirements:

HL = Higher Level, SL = Standard Level

English language requirements:

W = Writing, R = Reading, L = Listening, S = Speaking

Astrophysics

Award	UCAS course code	Type	Duration ¹	Entry requirements			
BSc (Hons)	F526	Single	3 years	A-level²	International Baccalaureate	GCSE	English language
URL	Year Abroad	Entry month	Related courses	ABB including A or above in Mathematics and/or Physics. Both subjects are required			
qmul.ac.uk/F526	F52Y	September	Foundation - FFX0				
				32 points, 655 at HL including 6 in HL Mathematics or Physics, with both subjects being taken at HL	5 GCSE passes, English and Maths at C/4	6.0 overall, 5.5 in all components	

Astrophysics

Award	UCAS course code	Type	Duration ¹	Entry requirements			
MSci (Hons)	F523	Single	4 years	A-level²	International Baccalaureate	GCSE	English language
URL	Year Abroad	Entry month	Related courses	AAB including A or above in both Mathematics and Physics			
qmul.ac.uk/F523	F52A	September	Foundation - FFX0				
				34 points, 665 at HL, including a minimum of 6 in both HL Mathematics and HL Physics	5 GCSE passes, English and Maths at C/4	6.0 overall, 5.5 in all components	

Physics

Award	UCAS course code	Type	Duration ¹	Entry requirements			
BSc (Hons)	F300	Single	3 years	A-level²	International Baccalaureate	GCSE	English language
URL	Year Abroad	Entry month	Related courses	ABB including A or above in at least one of Mathematics and Physics. Both subjects are required			
qmul.ac.uk/F300	F302	September	<ul style="list-style-type: none"> Foundation - FFX0 Year with Industrial Experience/Professional Placement - F306 				
				32 points, 655 at HL including 6 in HL Mathematics or Physics, with both subjects being taken at HL	5 GCSE passes, English and Maths at C/4	6.0 overall, 5.5 in all components	

Physics

Award	UCAS course code	Type	Duration ¹	Entry requirements			
MSci (Hons)	F303	Single	4 years	A-level²	International Baccalaureate	GCSE	English language
URL	Year Abroad	Entry month	Related courses	AAB including A or above in both Mathematics and Physics			
qmul.ac.uk/F303	F301	September	<ul style="list-style-type: none"> Foundation - FFX0 Year with Industrial Experience/Professional Placement - F307 				
				34 points, 665 at HL including a minimum of 6 in both HL Mathematics and HL Physics	5 GCSE passes, English and Maths at C/4	6.0 overall, 5.5 in all components	

Physics with Astrophysics

Award	UCAS course code	Type	Duration ¹	Entry requirements			
BSc (Hons)	F3F5	Major/Minor	3 years	A-level²	International Baccalaureate	GCSE	English language
URL	Year Abroad	Entry month	Related courses	ABB including A or above in at least one of Mathematics and Physics. Both subjects are required	32 points, 655 at HL including 6 in HL Mathematics or Physics, with both subjects being taken at HL	5 GCSE passes, English and Maths at C/4	6.0 overall, 5.5 in all components
qmul.ac.uk/F3F5	F3FY	September	Foundation - FFX0				

Physics with Astrophysics

Award	UCAS course code	Type	Duration ¹	Entry requirements			
MSci (Hons)	F3FM	Major/Minor	4 years	A-level²	International Baccalaureate	GCSE	English language
URL	Year Abroad	Entry month	Related courses	AAB including A or above in both Mathematics and Physics	34 points, 665 at HL including a minimum of 6 in both HL Mathematics and HL Physics	5 GCSE passes, English and Maths at C/4	6.0 overall, 5.5 in all components
qmul.ac.uk/F3FM	F3FA	September	Foundation - FFX0				

Physics with Data Science

Award	UCAS course code	Type	Duration ¹	Entry requirements			
BSc (Hons)	F30S	Major/Minor	3 years	A-level²	International Baccalaureate	GCSE	English language
URL	Year Abroad	Entry month	Related courses	ABB including A or above in at least one of Mathematics and Physics. Both subjects are required	32 points, 655 at HL including 6 in HL Mathematics or Physics, with both subjects being taken at HL	5 GCSE passes, English and Maths at C/4	6.0 overall, 5.5 in all components
qmul.ac.uk/F30S	-	September	Foundation - FFX0				

Physics with Data Science

Award	UCAS course code	Type	Duration ¹	Entry requirements			
MSci (Hons)	F30T	Major/Minor	4 years	A-level²	International Baccalaureate	GCSE	English language
URL	Year Abroad	Entry month	Related courses	AAB including A or above in both Mathematics and Physics	34 points, 665 at HL including a minimum of 6 in both HL Mathematics and HL Physics	5 GCSE passes, English and Maths at C/4	6.0 overall, 5.5 in all components
qmul.ac.uk/F30T	-	September	Foundation - FFX0				

Physics with Particle Physics

Award	UCAS course code	Type	Duration ¹	Entry requirements			
BSc (Hons)	F392	Major/Minor	3 years	A-level²	International Baccalaureate	GCSE	English language
URL	Year Abroad	Entry month	Related courses	ABB including A or above in at least one of Mathematics and Physics. Both subjects are required	32 points, 655 at HL including 6 in HL Mathematics or Physics, with both subjects being taken at HL	5 GCSE passes, English and Maths at C/4	6.0 overall, 5.5 in all components
qmul.ac.uk/F392	F39Y	September	Foundation - FFX0				

Physics with Particle Physics

Award	UCAS course code	Type	Duration ¹	Entry requirements			
MSci (Hons)	F393	Major/Minor	4 years	A-level²	International Baccalaureate	GCSE	English language
URL	Year Abroad	Entry month	Related courses	AAB including A or above in both Mathematics and Physics	34 points, 665 at HL including a minimum of 6 in both HL Mathematics and HL Physics	5 GCSE passes, English and Maths at C/4	6.0 overall, 5.5 in all components
qmul.ac.uk/F393	F39A	September	Foundation - FFX0				

Theoretical Physics

Award	UCAS course code	Type	Duration ¹	Entry requirements			
BSc (Hons)	F340	Single	3 years	A-level²	International Baccalaureate	GCSE	English language
URL	Year Abroad	Entry month	Related courses	ABB including A or above in at least one of Mathematics and Physics. Both subjects are required	32 points, 655 at HL including 6 in HL Mathematics or Physics, with both subjects being taken at HL	5 GCSE passes, English and Maths at C/4	6.0 overall, 5.5 in all components
qmul.ac.uk/F340	F34Y	September	Foundation - FFX0				

Theoretical Physics

Award	UCAS course code	Type	Duration ¹	Entry requirements			
MSci (Hons)	F323	Single	4 years	A-level²	International Baccalaureate	GCSE	English language
URL	Year Abroad	Entry month	Related courses	AAB including A or above in both Mathematics and Physics	34 points, 665 at HL, including a minimum of 6 in both HL Mathematics and HL Physics	5 GCSE passes, English and Maths at C/4	6.0 overall, 5.5 in all components
qmul.ac.uk/F323	F34A	September	Foundation - FFX0				

*Programme subject to approval.

¹Programmes with an integrated foundation year, year abroad or industrial/professional experience option will be one year longer in duration. Please note that programmes that include a modern foreign language or the Language and Culture theme on the BA Liberal Arts will require a year abroad.

²General Studies and Critical Thinking A-levels are not accepted as part of our entry requirements.

This information is accurate at the time of publishing. Please see our website for the most up-to-date information.

Politics and International Relations

Our London location means that you'll benefit from a range of high-profile visiting speakers from think tanks, national political institutions and party headquarters. Regular events give our students the chance to engage with Westminster, Whitehall and the third sector.

Build a degree around your interests

Our flexible modular system means that, as well as benefitting from specialist teaching, you get the freedom to shape your own programme of study, which can include the chance to work with a Member of parliament or civil society*. You'll be helped by your academic advisor along the way.

You'll also benefit from the public events of the Mile End Institute and the Centre for European Research, both based at Queen Mary. The centres bring together politicians, policy makers, academics, students and the public to debate major issues in British and European Politics.

What are we up to?

Professor Sophie Harman, Professor of International Politics

says: "I am interested in the politics as to why people die or get sick when they don't have to. You can't understand this without understanding the global politics that define which health issues matter, shape how people lead healthy lives, or turn a blind eye to people and issues on the margins of everyday politics.

"I started to explore this issue first by looking at the role of large international donor institutions such as the World Bank and one of the biggest global health issues of our time, HIV/AIDS, and have since explored the intricacies of global health governance, Ebola and the military, gender and women's health, and African agency in shaping global politics. Frustrated with the continued invisibility of people's lives in global health politics, I made a

feature film to draw attention to women living with HIV/AIDS."

Joint programmes

Studying politics goes hand-in-hand with a number of subjects, and students are able to complement and refine their studies with programmes run jointly with the School of Economics and Finance, School of Modern Languages, School of Law, School of History, and School of Business and Management.

Study abroad

Our students can choose to apply for a four-year version of most of our programmes, with a full year abroad. You pay reduced fees during your year abroad, which is spent studying with one of our prestigious partner institutions in Europe, North America, Australia,

or Asia (specific partnerships for each programme may vary).

Where could politics and international relations take you?

Our graduates go on to work or study in a wide variety of careers. Some apply their degree knowledge directly, entering sectors such as government, charities or lobbying and public affairs, while others work in policy

research, campaigning, or the commercial arena.

Your time with us will equip you with all sorts of transferable skills that are valued by employers. Politics, after all, is all about logical and critical thinking, and making sense of complicated issues and relationships. Recent graduates have found jobs with the House of Commons, the Home Office, the Labour Party and PwC.

Learn more



About the
School



About the
subject



Our
alumni

Taking the parliamentary internship allowed me to work with an MP as part of an assessed module. The practical experience I gained through the internship, coupled with the confidence boost of having worked as a parliamentary researcher, is one of the main reasons why I am where I am today.

Aman Halai,
BA Politics (2016)



Student's
view

I chose to study Politics and International Relations because I want to extend my knowledge of one of the most powerful forces operating on our society. I love that this programme allows me to construct my own opinions on real-life matters, which I can then discuss and debate with others.

Lorena-Florina Vlad,
BA Politics and International
Relations (final year)

*Please see qmul.ac.uk/politics for eligibility requirements

Degree programmes

International Baccalaureate requirements: HL = Higher Level, SL = Standard Level
 English language requirements: W = Writing, R = Reading, L = Listening, S = Speaking

History and International Relations

Award	UCAS course code	Type	Duration ¹	Entry requirements			
BA (Hons)	VL01	Joint	3 years	A-level²	International Baccalaureate	GCSE	English language
URL	Year Abroad	Entry month	Related courses	ABB	32 points, 655 at HL	5 GCSE passes, English at C/4	7.0 overall, 6.5 in W, 5.5 in R, L, S
qmul.ac.uk/VL01	VL02	September					

History and Politics

Award	UCAS course code	Type	Duration ¹	Entry requirements			
BA (Hons)	LV21	Joint	3 years	A-level²	International Baccalaureate	GCSE	English language
URL	Year Abroad	Entry month	Related courses	ABB	32 points, 655 at HL	5 GCSE passes, English at C/4	7.0 overall, 6.5 in W, 5.5 in R, L, S
qmul.ac.uk/LV21	LV20	September					

International Relations

Award	UCAS course code	Type	Duration ¹	Entry requirements			
BA (Hons)	L250	Single	3 years	A-level²	International Baccalaureate	GCSE	English language
URL	Year Abroad	Entry month	Related courses	ABB (AAB for the Year Abroad option)	32 points, 655 at HL (34 points, 665 at HL for the Year Abroad option)	5 GCSE passes, English and Maths at C/4	7.0 overall, 6.5 in W, 5.5 in R, L, S
qmul.ac.uk/L250	L25Y	September					

International Relations with Business Management

Award	UCAS course code	Type	Duration ¹	Entry requirements			
BA (Hons)	L25N	Joint	3 years	A-level²	International Baccalaureate	GCSE	English language
URL	Year Abroad	Entry month	Related courses	ABB (AAB for the Year Abroad option)	32 points, 655 at HL (34 points, 665 at HL for the Year Abroad option)	5 GCSE passes, English and Maths at C/4	7.0 overall, 6.5 in W, 5.5 in R, L, S
qmul.ac.uk/L25N	L2NA	September					

Politics

Award	UCAS course code	Type	Duration ¹	Entry requirements			
BA (Hons)	L202	Single	3 years	A-level²	International Baccalaureate	GCSE	English language
URL	Year Abroad	Entry month	Related courses	ABB (AAB for the Year Abroad option)	32 points, 655 at HL (34 points, 665 at HL for the Year Abroad option)	5 GCSE passes, English and Maths at C/4	7.0 overall, 6.5 in W, 5.5 in R, L, S
qmul.ac.uk/L202	L20Y	September					

Politics and International Relations

Award	UCAS course code	Type	Duration ¹	Entry requirements			
BA (Hons)	L240	Single	3 years	A-level²	International Baccalaureate	GCSE	English language
URL	Year Abroad	Entry month	Related courses	ABB (AAB for the Year Abroad option)	32 points, 655 at HL (34 points, 665 at HL for the Year Abroad option)	5 GCSE passes, English and Maths at C/4	7.0 overall, 6.5 in W, 5.5 in R, L, S
qmul.ac.uk/L240	L24Y	September					

Politics and Sociology

Award	UCAS course code	Type	Duration ¹	Entry requirements			
BA (Hons)	L2L3	Joint	3 years	A-level²	International Baccalaureate	GCSE	English language
URL	Year Abroad	Entry month	Related courses	ABB (AAB for the Year Abroad option)	32 points, 655 at HL (34 points, 665 at HL for the Year Abroad option)	5 GCSE passes, English and Maths at C/4	7.0 overall, 6.5 in W, 5.5 in R, L, S
qmul.ac.uk/L2L3	L23L	September					

Politics with Business Management

Award	UCAS course code	Type	Duration ¹	Entry requirements			
BA (Hons)	L2NF	Major/Minor	3 years	A-level²	International Baccalaureate	GCSE	English language
URL	Year Abroad	Entry month	Related courses	ABB (AAB for the Year Abroad option)	32 points, 655 at HL (34 points, 665 at HL for the Year Abroad option)	5 GCSE passes, English and Maths at C/4	7.0 overall, 6.5 in W, 5.5 in R, L, S
qmul.ac.uk/L2NF	L2NY	September					

*Programme subject to approval.

¹Programmes with an integrated foundation year, year abroad or industrial/professional experience option will be one year longer in duration. Please note that programmes that include a modern foreign language or the Language and Culture theme on the BA Liberal Arts will require a year abroad.

²General Studies and Critical Thinking A-levels are not accepted as part of our entry requirements.

This information is accurate at the time of publishing. Please see our website for the most up-to-date information.

Psychology

Our biological and neuroscientific emphasis sets us apart from many other psychology degrees, often based within social science departments. Our programme prepares you for further study and careers in biological and medical sciences as well as social sciences and humanities.

Our approach

Psychology at Queen Mary is taught as part of the School of Biological and Behavioural Sciences. We treat the topic as a natural and experimental science, whether you approach it from the perspective of psychology (perception, cognition, communication and social life) or neuroscience (anatomy, physiology, biochemistry, genetics and pharmacology).

You'll learn about cognitive, social, developmental and abnormal psychology and then apply this knowledge in topics such as counselling and health psychology. You'll also explore the origins of the human mind and behaviour, drawing on animal cognition, neuroscience and behavioural genetics and epigenetics.

Our psychology programme is accredited by the British Psychological Society, meaning our graduates are eligible for Graduate Basis for Chartered Membership (GBC) – an entry requirement for the postgraduate and training programmes that lead to becoming a fully Chartered Psychologist.

The option of studying BSc Psychology with Professional Experience allows you to spend a year working in a professional position as part of your degree. This is available to transfer onto provided you achieve a satisfactory academic result in your first year. As well as helping you to stand out from the crowd and secure graduate employment, professional experience is an excellent opportunity to develop real-world skills and put your

learning into context. Students have undertaken professional experience positions in a range of sectors, including hospital clinics, mental health charities, HR, market research, youth centres, government and clinical research labs.

There is also the option to go global and undertake a Year Abroad. Queen Mary has links with universities in Europe, North America, Asia and Australia.

What are we up to?

We know that people can respond very differently to adversity, with some individuals developing stress-related conditions such as depression, while others are able to maintain good mental health despite adversity and show psychological resilience.

A recent study from Queen Mary researchers Dr Demelza Smeeth and Professor Michael Pluess has explored how events in our lives could affect the way our genes work and how we respond to adversity.

The researchers developed a theoretical model to show how epigenetics – changes to the activity of our genes – can influence how resilient we are. They show that our resilience can be affected by epigenetics at three main stages during

our lifetime: certain epigenetic differences are set at birth; these can then change in response to our environment during infancy and childhood; and protective factors we're exposed to during times of adversity can also have an impact.

This work has helped to explain how aspects of our environment can become biologically embedded and contribute to the development of psychological resilience, as well as highlighting future areas for further research.

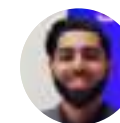
Learn more



About the
School



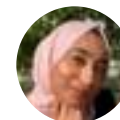
About the
subject



Our
alumni

Psychology's versatility and broad nature as a discipline means it opens more doors than most people think. I chose Queen Mary because of its Russell Group university status and its unique and fantastic employment and work placement programmes.

Zeeshan Nazar,
Business Manager at BT,
BSc Psychology (2019)



Student's
view

My degree has enabled me to study a variety of modules from Counselling Psychology, Social Psychology, Brain and Behaviour, to statistics. With the help of my academic advisor and personal tutor, I was able to enjoy even the more challenging modules and understand the subject a whole lot more.

Fatha Bana,
BSc Psychology (3rd year)

Degree programmes

International Baccalaureate requirements: HL = Higher Level, SL = Standard Level
English language requirements: W = Writing, R = Reading, L = Listening, S = Speaking

Psychology

Award	UCAS course code	Type	Duration ¹	Entry requirements			
BSc (Hons)	C800	Single	3 years	A-level ²	International Baccalaureate	GCSE	English language
URL	Year Abroad	Entry month	Related courses				
qmul.ac.uk/C800	C80Y	September	Foundation - CCX2	AAB including at least one of the following: Biology, Chemistry, Maths, Further Maths, Physics or Psychology	35 points overall. 665 at HL including at least one of the following: Biology, Chemistry, Maths, Further Maths, Physics or Psychology	5 GCSE passes, English and Maths at C/4	6.5 overall, 6.0 in W, 5.5 in R, L, S

*Programme subject to approval.
¹Programmes with an integrated foundation year, year abroad or industrial/professional experience option will be one year longer in duration. Please note that programmes that include a modern foreign language or the Language and Culture theme on the BA Liberal Arts will require a year abroad.
²General Studies and Critical Thinking A-levels are not accepted as part of our entry requirements.

This information is accurate at the time of publishing. Please see our website for the most up-to-date information.



Take your first steps

**The Wolfson Institute
of Population Health**
A world-leading centre of
applied health sciences

Dawson Hall
Accommodation for
medical and dental
students

**The William Harvey
Research Institute**
One of Europe's largest
pharmacological research
institutes

In this chapter:

- 188 How to apply
- 190 Contextual admissions
- 191 Degree apprenticeships
- 192 Student finance, bursaries and support
- 194 International student admissions
- 198 Terms and conditions



Charterhouse Square

How to apply



March - October Do your research

- Choose your degree programme, check the entry requirements and find out about upcoming Open Days: qmul.ac.uk/undergraduate
- You can also speak to current Queen Mary students online: qmul.ac.uk/unibuddy
- Virtual campus tours: qmul.ac.uk/campustours
- Prepare your UCAS application.
- Register your UCAS account: ucas.com/apply
- Write your personal statement.
- Organise your academic reference.



September - June Make your application

- Submit your application from early September: ucas.com
Queen Mary's code is Q50
- **15 October 2022:** Medicine and Dentistry application deadline: qmul.ac.uk/smd
- **25 January 2023:** UCAS application deadline. Some courses may close after this date.
- **30 June 2023:** Final UCAS application deadline. Applications after this date go into Clearing.



January - June Accept your offer

- If you apply by 25 January 2023, you should get a decision by mid-May.
- Decide your firm and insurance choices on UCAS by early June.
- If you apply after 25 January 2023, you will have a later deadline to respond to your offer. Check: ucas.com/dashboard for deadlines.
- Once you have firmly accepted your offer, you can apply for accommodation: residences.qmul.ac.uk
- We will write to you after you have accepted your offer to advise you on your next steps.
- The dates here refer to courses starting in September 2023.

Key dates

March to October

- Research courses and attend an open day.
- Create a university and course shortlist and write your personal statement.
- Research bursaries and scholarships.

16-17 June

Undergraduate Open Days

September

UCAS applications open

8 October

Undergraduate Open Day



June to October

Medicine/dentistry – take the UCAT

15 October

Application deadline for medicine and dental courses (UCAS only)

November to May

Look out for a decision from Queen Mary between these dates.



25 January

Application deadline for the majority of Queen Mary courses

Applying for housing

See our website for further details

30 June

Final UCAS application deadline



Contextual admissions

We believe that higher education can be for everyone. Approximately 50 per cent of our students are the first in their family to go to university, and we're proud that so many different students, from different places, choose Queen Mary.

UK students from backgrounds traditionally under-represented in higher education may receive

lower grade offers than usual to study at Queen Mary. These are called contextual offers, and means we use information and data about applicants to assess individual circumstances and potential. This is part of Queen Mary's commitment to widening participation and making sure the University is inclusive and welcomes students from all backgrounds.

We might also make you a standard offer even if your academic record would normally have meant you didn't meet the threshold used to decide who gets an offer. Equally, in some cases we'll consider your circumstances and confirm your place if your final results are marginally short of what's needed.

Learn more 



Learn more about contextual admissions

Degree apprenticeships

Degree apprenticeships allow you to study at Queen Mary towards a full undergraduate degree, taking on zero tuition fee debt and gaining up to four years' work experience, all while earning a salary. You study on campus but keep working for the company that sponsors you, and undertake work-based assessments. Degree Apprentices are employees of their sponsoring companies.

We currently offer the following degree apprenticeship programmes at undergraduate level:

- BSc (Econ)(Hons) Applied Finance*
- BSc (Hons) Business Management for Social Change
- BSc (Hons) Digital and Technology Solutions (Data Analyst)
- BSc (Hons) Digital and Technology Solutions (Software Engineer)

Full details can be found on our website. You normally apply directly to an employer or through the National Apprenticeship Service. However, applications for the BSc (Hons) Digital and Technology Solutions (Data Analyst) are made through UCAS.

*Programme subject to approval.

Learn more 



Learn more about degree apprenticeships

Student finance, bursaries and support

The information in this section is correct as of October 2021. For the latest information, please follow the QR codes on the next page.

UK (Home) tuition fees

Queen Mary's 'Home' rate of tuition fee for students starting their course in 2022/23 is £9,250. Tuition may increase depending on inflation and government policy. Any changes to University fees will be published for individual courses online via the undergraduate course finder.

Remember, if you are eligible for, and choose to apply for, the Government's student finance tuition fee loan, you do not have to pay your tuition fees upfront.

If you choose to pay your tuition fees upfront, it's important to understand when your payments fall due – our Undergraduate Funding Guide explains this.

Scholarships and bursaries

Home students who come from families with a taxable income of less than £35,000 are automatically entitled to the Queen Mary Bursary. The amount of the bursary you receive each year will depend on your household income.

You don't need to apply for the bursary as long as you have applied to your regional student authority for income-assessed UK government financial support.

We also provide a generous package of scholarships – full details are available on our website.

International tuition fees

For information about fees and finance for international students, please see page 194.

Advice and support

The Advice and Counselling Service provides individual, confidential advice about your eligibility for funding, planning your budget, applying for student finance or any other financial or practical issue. You can contact us at any time before starting your course, and throughout your studies. We particularly encourage students from a care background, who otherwise have no contact with their family, or are living alone in the UK, to contact us before starting their course.

UK government student finance

The Government's student finance package includes:

- tuition fee loans (for covering the cost of UK-based university tuition. This is not income-assessed)
- maintenance loans (to help

with the cost of living. This is partly income-assessed)- supplementary grants (for students with particular circumstances or needs).

Students who are UK residents should apply as early as possible to Student Finance England (or the equivalent in Wales, Scotland or Northern Ireland), who will determine your eligibility.

Financial Assistance Fund

The Financial Assistance Fund can help students with living costs as well as sudden financial emergencies. You do not normally have to repay a payment from the Fund.

The amounts available to students are strictly limited, and the Fund cannot be regarded as a substitute for your main source of funding.

Living costs

Depending on your lifestyle, living in London away from home for an academic year (September to June) tends to cost at least £14,000 (2021/22). More information about costs and budgeting is available on the Advice and Counselling Service webpages.



Mile End Library
Mile End campus

Learn more



Fees and
funding



Advice and
Counselling
Service



Undergraduate
Funding Guide



Scholarships
and funding

International student admissions

Queen Mary welcomes students from across the globe.
We have over 170 nationalities represented on campus.

We're here to help you at every stage of your application. After accepting your offer from Queen Mary, you'll receive communications from us about applying for your accommodation and preparing for life in London.

Once you've met your offer and have changed your status to 'Unconditional', we will provide information about applying for a visa, if needed. This normally happens up to three months before you are due to start your degree.

Entry qualifications

We consider many different qualifications for entry. You can find out if the qualifications you are taking will be considered (including our English language requirements) on our country-specific admissions webpages.

Making an application

Undergraduate applications will need to be made through UCAS, through which you can apply for up to five degree programmes. Applications to the International

Foundation Year can be made via UCAS for the integrated four-year option, or directly to Queen Mary for the standalone Foundation Year.

International funding and finance

Tuition fees

Most international students pay overseas tuition fees. You can find out about tuition fee status and which rate you'll need to pay on our on our International students webpages.

Student visa application

Most international students will apply for student immigration permission to study in the UK. You can apply for your student visa up to six months before your course start date, in the country where you are living. Prepare your supporting documents in advance, including evidence of your funds if required. Our guide to applying for student immigration permission explains how much you need to show and the required format of the evidence of your funds.

Scholarships and bursaries

We understand that studying at university – especially in another country – is a big investment, personally and financially. We also believe that education is for everyone, which is why we offer a variety of scholarships and bursaries to help the brightest undergraduate students. Awards of up to £5,000 are available depending on your situation. You can search by country and academic school on our website.

Before you arrive

The Global Engagement Office has staff on hand to speak with students both pre- and post-application. The team provide weekly communications with offer holders over the spring and summer, while also delivering in-person and virtual pre-departure briefings to London-bound students, an airport collection service, and our International Welcome Programme. We also offer advice about accommodation, scholarships, funding and English language requirements.

Learn more



International students webpages



Country-specific admissions information



Scholarships and bursaries



Applying for student immigration permission

1

Once we've confirmed your personal and study details, we'll release your Certificate of Acceptance of Study (CAS). You'll write your CAS number on your visa application form.

2

Visas typically take four weeks to be issued, though timings vary country by country.

3

Once your visa is secured, start looking at flights to London and preparing for your studies.

4

Enrol online and arrive in London in September to join Welcome Week and your academic induction programme.



Seminar room
Graduate Centre

A portrait of Harriet Spoor, a young woman with long, light brown hair, smiling gently. She is wearing a dark blue top with white polka dots and a thin gold necklace with a small pendant. The background is a blurred outdoor setting with trees and a building.

Harriet Spoor
BA Politics (1st year)

When deciding where to study, **Harriet** knew she wanted to go somewhere she'd feel at home.

Coming from a disadvantaged area, Harriet worried that she wouldn't fit in with the culture at some universities. When Queen Mary's outreach team came to visit her sixth form, she knew it was the right place for her: a welcoming atmosphere where she could live at home and still be part of the community.

Harriet initially received an offer for a joint honours degree, but realised by results day that she wanted to study Politics by itself. She still had her heart set on Queen Mary, so she called the Clearing hotline and secured a place on her preferred programme. "I worried I'd be penalised for changing my mind, but they actually encouraged that at Queen Mary, because they don't want you to do something you don't love."

Living off-campus, Harriet still feels integrated in university life. "There are

so many societies and clubs, which is really helpful for meeting people. A lot of my friends aren't on the same course as me or even studying humanities."

This diversity of experience is part of what Harriet values most about Queen Mary: "You get to learn from other people's experiences, rather than only meeting people that are similar to you and doing the same thing as you."

Feeling settled means Harriet's been able to enjoy her course and explore her academic interests. "I'm finding out about niche areas that I'm interested in, like gender-based politics in America. I'd like to carry on and do a master's, and maybe join the Civil Service."

Looking back, she's glad she trusted her instincts: "I'm studying the subject I wanted to do at a university that I love."

Terms and conditions

1. Rules and regulations

The offer of, and acceptance of, a place at Queen Mary University of London ("Queen Mary") is made on the understanding that you agree to our terms and conditions (qmul.ac.uk/prospective/termsandconditions). These cover, among other things, compliance with our Academic Regulations and related policies, payment of fees, attendance at classes, submission of work, attendance at examinations, student discipline, complaints procedure, freedom of speech and equal opportunities policies. To read the Academic Regulations and related policies, visit arcs.qmul.ac.uk/policy

2. Changes to our programmes

We will aim to deliver your programme so that it closely matches the way in which it has been described to you by Queen Mary, especially at the point that you accept your offer. However, it is important to understand that there are circumstances in which we may subsequently change aspects of your programme. Our programmes are delivered within a dynamic, academic community by staff who are actively engaged in research. In this context, we might make changes so that our students can learn from the latest academic research. We also value student feedback and provide regular opportunities for

our students to comment on the content of their programme. We may therefore alter your programme in response to this dialogue with current students. Other circumstances which can lead to changes include: staff changes, which can lead to new modules being offered, modules being withdrawn, or a change to who teaches the programme; changes made in response to new requirements from external professional or statutory bodies; or changes to the way in which universities are funded, which might lead to changes in the availability of some student services, for example. In the unlikely event that we discontinue a programme of study, or change it significantly before it begins, we will inform applicants holding an offer of a place at the earliest opportunity and will endeavour to offer a suitable alternative programme at Queen Mary. We will also ensure that these changes are reflected on our website as soon as possible.

3. Liability for damage to person or property

Queen Mary does not accept any responsibility or liability for any loss and/or damage to:

- (a) your property, students' and/or visitors' property and/or
- (b) any transfer of computer viruses to your equipment, students' and/or visitors'

equipment unless caused by Queen Mary's negligence.
(c) Neither does Queen Mary accept any responsibility or liability for personal injury to you, students and/or visitors caused by their misuse or unauthorised use of Queen Mary equipment, while they are on Queen Mary premises, or engaged in Queen Mary activities.

4.1 Queen Mary will receive personal data from you in various ways when you submit your application for a programme at Queen Mary. This may include special category or criminal convictions data under data protection legislation (the General Data Protection Regulations (Regulation (EU) 2016/679) as implemented by the Data Protection Act 2018 (as amended)).

4.2 Your personal data (including any special category personal data) will be held by Queen Mary and may be used by Queen Mary to enable it to fulfil its responsibilities to you.

5.1 Accuracy of information

In this prospectus Queen Mary has made reasonable efforts to ensure that the information provided in this prospectus is both helpful and accurate at the time of going to print. However, this information is

subject to change over time. For this reason, it is important that you check the website for the most up-to-date information (qmul.ac.uk) or contact us using the details contained within the document.

5.2 Applicants are strongly advised to check the course finder on the Queen Mary website for up-to-date entry requirements before submitting their application qmul.ac.uk/undergraduate/coursefinder

5.3 Read our terms and conditions in full at qmul.ac.uk/prospective/termsandconditions

5.4 Graduate destinations

All information on graduate destinations have been reported by our graduates to their School or Institute after graduation. These sections of the prospectus relate mainly to our graduates from 2021 onwards.

6. This prospectus was manufactured using UPM Fine Offset sourced from an ISO 14001 certified mill, where the pulp was bleached using an Elemental Chlorine Free (EFC) process. The materials followed a Chain-of-Custody scheme, made of materials from well-managed, FSC®-certified forests and other controlled sources.





Reach your full potential



Join us at our Open Events on
17–18 June 2022
8 October 2022

Book your place at qmul.ac.uk/undergraduate/openday



Queen Mary
University of London

**RUSSELL
GROUP**