




Queen Mary  
University of London

RUSSELL  
GROUP



**Undergraduate Prospectus | 2022**



“Queen Mary  
ticked many boxes:  
approachable  
academics, a great  
balance with course  
structures, and there’s  
always something new  
happening on campus.”

**Wafa Mohbubul, first-year BSc Physics**



# Welcome to Queen Mary University of London – a Russell Group University that is proud to stand out from the crowd.

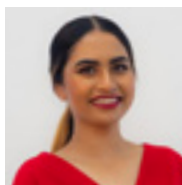
As we navigate a world impacted by ongoing global health challenges, Queen Mary continues to stay true to its heritage, opening the doors of opportunity to anyone with the potential to succeed, and nurturing that potential through world-class education informed by our cutting-edge research.

Here, you'll discover a home-from-home as part of our diverse community of staff and students; where we safeguard your wellbeing while ensuring you get an outstanding education and student experience; where we collectively adapt and rise to the challenges that we all face.

So it is with great pleasure and pride that we introduce you to our unique, inclusive University and all we have to offer.



**Professor Colin Bailey**  
President and Principal,  
Queen Mary University  
of London



**Shamima Atker**  
President, Queen Mary  
Students' Union

<b>Welcome</b>	
Who we are	4
Our community	6
Where you'll be studying	8
<b>Student life</b>	
Life as a student	10
Health and safety	12
Your support network	14
Where you'll live	16
Innovative learning	18
Global opportunities	20
Studying abroad	22
Preparing for your career	24
Work while you learn	26
<b>Subject areas</b>	
Foundation Programmes	30
Biological and Biomedical Sciences	32
Business and Management	34
Chemical Sciences	36
Comparative Literature	38
Computer Science	40
Dentistry	42
Drama	46
Economics and Finance	48
Engineering	50
English	52
Environmental Science	54
Film Studies	56
Geography	58
History	60
Law	62
Linguistics	64
Materials Science	66
Mathematical Sciences	68
Medicine	70
Modern Languages and Culture	76
Physics and Astronomy	78
Politics and International Relations	80
Psychology	82
<b>Our courses by subject</b>	
How to apply	106
Student funding and finance	108
International student admissions	110
Getting here and getting around	112
Terms and conditions	114

# Find your future at Queen Mary

**We believe that when  
diverse experiences,  
perspectives and  
disciplines interact, truly  
original thought happens.**







Festival of Communities



Whitechapel campus

At Queen Mary, you'll find an institution that embodies excellence and global collaboration. We're unique, leading the way in inclusivity while delivering an outstanding education and world-class research.

Social justice is in our DNA. We uphold this mission today through research that improves lives on a local, national and international level – whether it's helping to underpin the national campaign for a real Living Wage, or assisting in the fight against Covid-19. We're a global university, but remain true to our East End roots.

“Queen Mary continues to prove that social inclusion and academic success are not mutually exclusive.”

**The Times & Sunday Times Good University Guide 2021, which recognises Queen Mary as the most inclusive Russell Group University.**

**19th in the UK and  
114th internationally  
in the QS World  
Universities Rankings**

Our undergraduate programmes offer subjects across the full academic spectrum, including ones you wouldn't expect from a Russell Group university. Many of our programmes are interdisciplinary and brought to life through student co-creation and world-leading research.

From your first day here, you'll have access to the tools you need to boost your skills, allowing you to graduate with confidence. We offer tailored career development, mentoring and work opportunities so you can stand out from the crowd and tackle the major challenges the world faces today.

# Our community

**Queen Mary Students' Union (QMSU) is a student-body community where your voice is heard, your views are represented, and which offers opportunities to make friends and really get the most out of your experience.**



**“At Queen Mary we are proud to be part of our local community.**

We collaborate with community organisations and groups on a number of different projects, from research projects to co-creating our annual Festival of Communities, a two-day festival for local residents featuring the best of Queen Mary research and local opportunities.

**Sarah Barnes, Public Engagement Manager**

**“We have student media outlets**

where you can host radio shows and publish articles in our newspapers and magazines. I personally really enjoyed belonging to the mixed hockey team. I love the friendly competition and we got to train at the Hockey and Tennis Olympic grounds!”

**Aphrodite Murray-Liddington**





I'm **Shamima Akter**, President of the Students' Union. My job is to lead the reps who make up the Students' Union and the staff who work on providing services to students. I make sure that the student voice is at the heart of everything the University does. I love the student community. Our students work really well together and they're very supportive of each other. Having that community around you while you're learning I found to be valuable, and it really helped me during my time here.



I'm **Jack Juckes**, Vice-President Welfare for QMSU. I work on issues affecting our students' wellbeing, such as mental and physical health, academic welfare, campus safety and security, housing, and financial support.

I work with individual students, student representatives, student groups, and various departments across the University and Students' Union to improve our student community's wellbeing.



I'm **Tiana Dinard-Samuel**, Vice-President Communities. I work on welfare issues experienced by our student-body communities. A big thing for us are also liberation campaigns, celebrating different protected characteristics, so celebrating Black History Month, Islamophobia Awareness Month, Antisemitism Awareness Month, LGBT+ History Month and Asian Heritage Month. I get our students and societies involved to lead on these campaigns as well.



I'm **Cameron Storey**, Vice-President Humanities and Social Sciences. My role is representing students to the University about education-related things, including library provision, investment into academic resources, and assessments and feedback.

I want to make sure that all students feel empowered to make change during their time here.



I'm **Aphrodite Murray-Liddington**, Vice-President Science and Engineering. I represent students within the five Schools in our Faculty. I work with University and Students' Union staff on projects linked to employability, welfare and education.

My main priority is to act as a conduit between students and academics, ensuring that the student voice is represented across Queen Mary.



I'm **Mat Robathan**, Vice-President Barts and The London for QMSU. I represent Barts and The London School of Medicine and Dentistry students.

I'm responsible for implementing relevant Students' Union policies and I work hard to improve students' educational and welfare experience. I also work with Barts and The London part-time officers, student groups and venue staff to provide you all with the best student experience possible.

# Where you'll be studying

**When it comes to world cities, London has it all: history, food, sport, culture, nightlife, adventure – and countless exciting career opportunities.**





### Be part of one of the world's most exciting cities

London is a cultural, artistic and economic powerhouse, a city where amazing food from around the world is never far away, and where historic streets are waiting to be explored and spill their secrets.

### Where tech start-ups and history sit side by side

East London is easily one of the most vibrant parts of the city. It's international and bustling – a place where new ideas spring up and great things take shape. We're proud to be an East London university, and can't wait to show you what that means.

**“It's a world city, so you have the world at your fingertips.**

There's so much on offer that you can do and London was recently rated the best students' city in the world. Being based in East London, Queen Mary have so much happening locally, be it Brick Lane, Victoria Park, Shoreditch or the Olympic Park. However, you're also never far from the rest of London too!”

**Mat Robathan**

**“London provides you with so many opportunities in both career and social terms.**

There are so many options and cultural festivals, and options for international students to engage with members of their own communities – and so many other communities as well.”

**Tiana Dinard-Samuel**



**“Even though we're a campus university, it's an open university as well**

– it is integrated within the community itself. Having different Tube stations and food places around, it's very accessible to people and it's easier to communicate with the actual community around us.”

**Shamima Akter**

# Life as a student

**Community is at the heart of everything we do. With something for everyone, there are many ways to make the most of being part of Queen Mary.**





## “Societies are such a great way to get involved with the community at Queen Mary.

There is literally something for everyone. I met some of my best friends during events organised by the Law Society, such as their Boat Ball! And even though I didn't study Law, it didn't stop me from getting involved with something my friends from different degrees were really into.”

**Cameron Storey**

### Your Students' Union

Queen Mary Students' Union will be your voice as a member of the student body. The Union's mission is to improve students' lives through listening to your feedback, electing students to represent your views, and by providing opportunities, services, and societies based around common interests. Medicine and dentistry students also become members of Barts and The London Students' Association.

### Your campus

Most of our undergraduate students are based in our Mile End and Whitechapel campuses, located in the beating heart of East London. We also have campuses in Lincoln Inn's Fields, Charterhouse Square and West Smithfield, which specialise in certain subject areas.

Our Mile End campus offers a community where you can live, relax and study. We have two shops, four cafés, two restaurants, a bar, a gym, a bookshop and a bank on site.

## “The benefits of studying at a campus-based university

mean there's loads of nice places to hang out and eat lunch. There are amazing outdoor spaces like by the canal on our Mile End campus, and cosy cafés and restaurants like The Griff Inn on our Whitechapel campus. Our Students' Union has two fantastic bars (one on Mile End campus and one on Whitechapel campus) that host really fun club nights and events. There's something to suit everyone, no matter what your taste in music!”

**Jack Juckes**

There's plenty of green and outdoor space, but you're only minutes away from Central London's bustling streets.

### Sport facilities and opportunities

With more than 60 sports clubs to choose from, you'll never be short of options if you're looking to make friends, keep fit, or just have fun. Qmotion, on our Mile End campus, is the Union's sport and fitness centre. The gym is equipped with the latest facilities, holds a wide range of group exercise classes, and offers a number of additional services, such as personal training.

We offer sport and exercise options for every student, and for every level of interest and ability. It's a great way to improve your university experience and your physical and mental wellbeing. Options include:

- Community sport: gain qualifications, volunteer and make a difference in the community
- Get active: turn up and play on campus recreational sport
- Campus games: compete in fun events/activities to win trophy points for your school
- Social leagues: fun and simple sport leagues on/near to campus
- Club sport: compete for the University in any of our 60+ clubs
- Elite Athlete Programme: get top-level athlete support to help you towards a dual career.

# Health and safety

**When you join Queen Mary, you'll join an environment where the wellbeing of our students and staff is put front and centre, and where health and safety is our highest priority.**



We've adapted our campuses in line with the government's public health advice, and monitor and clean all our facilities and services regularly to ensure your safety and security. The result is Covid-secure learning and living spaces where you have easy access to our health services.

There's a free Student Health Service available on our Mile End campus that provides a complete range of medical services including immunisations, sexual health advice and screening, specialist clinics and psychological counselling. Learn more about the range of physical and mental health services we offer on page 14.

We encourage you to register here if you're based on or near the Mile End campus, or at Whitechapel, and are eligible to do so. You can do this either online or at the Student Health Service. We can provide a list of local doctors if you are based outside of Tower Hamlets and you wish to register with a doctor close to where you live.

The Occupational Health Department focuses on the prevention of ill health related to study, working particularly with students from the School of Medicine and Dentistry.

### Industry recognition

Queen Mary's commitment to providing a safe and nurturing study and work environment has been officially recognised. Our Health and Safety Directorate were shortlisted in the 'Most Influential Team' category in the annual Safety & Health Practitioner awards.

The nomination acknowledged the team's rapid and thorough work in getting the University's research laboratories up and running after the initial UK lockdown in March 2020.

The judges also recognised how the team helped teaching to resume on campus without significant transmission risks, while still allowing for students to live on campus and to enjoy in-person learning and on-campus activities.

For more information about how we support you in your environment visit [hsd.qmul.ac.uk](https://hsd.qmul.ac.uk)

### "This is a wonderful achievement

that the health and safety team should be immensely proud of. It is a brilliant recognition of all their work this year, when they have been on the frontline of the University's efforts during the pandemic."

**Professor Colin Bailey, President and Principal at Queen Mary**





# Your support network

Support services are here to help you get the most out of your time with us.



Whether you're looking for revision tips or a mentor, support, help and guidance is part of life at Queen Mary. You can receive help for academic and course-related problems as well as health and personal issues.

## Supporting your study

### Your Advisor

In your School or Institute, your Advisor is your first point of contact. Usually an academic member of staff, your Advisor's main role is to discuss academic progress, but they can also be a great source of information on the other services available. They can refer or recommend you to other support services.

### Student Support Officer

Most academic schools have dedicated Student Support Officers, offering additional advice and support with your studies if needed. To find out who your Student Support Officer is ask your school or visit [my.qmul.ac.uk/services-and-support/student-support-contacts](https://my.qmul.ac.uk/services-and-support/student-support-contacts)

### Learning support

The Academic Skills Enhancement Service works with taught students at any level, from any subject, to achieve academic success at Queen Mary. They support all aspects of study including time management, critical thinking, effective reading and note-making, data literacy and academic writing. Workshops, one-to-one tutorials and drop-ins run throughout the year.

[qmul.ac.uk/library/academic-skills](https://qmul.ac.uk/library/academic-skills)

## Language Centre

At Queen Mary, students have the opportunity to learn a language, which is a great way to enhance your employment prospects. If English isn't your first language, you can also receive help and support with further language study.

[qmul.ac.uk/sllf/language-centre](http://qmul.ac.uk/sllf/language-centre)

## PASS

Our Peer-Assisted Study Support scheme (PASS) is a course-based mentoring scheme, where first-year students have the opportunity to connect with Higher-year students (mentors) to help settle into university life.

[qmul.ac.uk/outreach/our-activities/pass](http://qmul.ac.uk/outreach/our-activities/pass)

## IT Services

Our IT Services team can help you get the most out of Queen Mary's digital environment, and can support you if you run into IT trouble. We can help with things like email and internet access, AppsAnywhere, teaching and learning software and mobile apps, business application software and high-performance computing in support of research. You'll have access to 1,500 PCs and WiFi across our campuses. [its.qmul.ac.uk](http://its.qmul.ac.uk)

## Your wellbeing

### Advice and Counselling Service

The Advice and Counselling Service at Queen Mary provides students with a range of specialist, professional and confidential services to support students with financial, welfare, legal, emotional and mental health and other psychological issues. These are delivered through our

frontline team, our welfare advice team, and our counselling service. [welfare.qmul.ac.uk](http://welfare.qmul.ac.uk)

### Disability and Dyslexia Service

Our Disability and Dyslexia Service offers support to all students with disabilities, including specific learning differences like dyslexia and mental health diagnoses, from application through to graduation. To explore the many types of support available at Queen Mary please visit

[dds.qmul.ac.uk](http://dds.qmul.ac.uk)

### Care Leavers and estranged students

We are proud to welcome students who are Care experienced or estranged from their families. We provide support throughout students' career at Queen Mary. For more information, contact

[care-experienced@qmul.ac.uk](mailto:care-experienced@qmul.ac.uk)

### Faith at Queen Mary

Our Multi-Faith Centres at Mile End and Whitechapel are used for prayer, worship and quiet reflection. St Benet's is a Christian chapel and a meeting place open to all students and staff, regardless of their religion and beliefs. Informal confidential pastoral support is also available through our chaplains. [faith.qmul.ac.uk](http://faith.qmul.ac.uk)

### Music at Queen Mary

Music at Queen Mary provides students with exceptional opportunities and experience in music, supporting wellbeing, creativity and development within a welcoming and inclusive environment. [music.qmul.ac.uk](http://music.qmul.ac.uk)

## QMSU academic advice

Our Students' Union's Academic Advice Service offers advice and representation on a number of academic welfare issues, including applications for extenuating circumstances and appeals. [qmsu.org/advice/academic](http://qmsu.org/advice/academic)

## Report and support

We are committed to maintaining an environment where staff and students are treated with dignity and respect. We run awareness campaigns, host an online reporting platform and take action across our campuses to ensure they are free from all forms of prejudice, discrimination, bullying and harassment. [reportandsupport.qmul.ac.uk](http://reportandsupport.qmul.ac.uk)

## Residential support

We offer 24/7 support for students living in Queen Mary Halls and promote a spirit of community, cooperation and success. Visit us online at [residentialsupport.qmul.ac.uk](http://residentialsupport.qmul.ac.uk)

## Student Health Service

We have an NHS Student Health Service available on our Mile End campus. Students living in Queen Mary accommodation at Mile End or Whitechapel, and any students living in the borough of Tower Hamlets can register with the service. Also, if it is clinically appropriate and practical in your individual case the Student Health Service offers out-of-area registration without home visits for our students who live within the inner London area. [studenthealth.qmul.ac.uk](http://studenthealth.qmul.ac.uk)

# Where you'll live

**At Queen Mary, you'll  
enjoy the benefits of a  
campus community in  
accommodation to suit  
every budget – with  
all the excitement of  
London just outside.**





## Living on campus

We guarantee hall accommodation to all first-year undergraduate and foundation students, as long as you meet our eligibility criteria. Whether you choose to live in halls with other new students or prefer an alternative housing option, our experienced team of housing advisors are here to help you make the right choice.

Our halls of residence offer a range of affordable options either on campus or a short commute away, and residential fees start from around £150 per week.

To find out more about your eligibility, the application process, rent, and descriptions and virtual tours of our halls, head to [qmul.ac.uk/accommodation](https://qmul.ac.uk/accommodation)

## “I loved the convenience of living in on-campus accommodation.

I lived in Floyer House, on the Whitechapel campus, and only had to walk a minute or two to get to my lecture theatre. If I was unlucky enough to wake up late, I still made it to my lectures on time!”

**Jack Jukes**

## “Speaking from experience, it’s great to have everything on your doorstep,

including shops, bars, even a bank! Also, I feel like by living on campus, there is always something to do and people to meet, and your lectures and seminars are only a few minutes away.”

**Cameron Storey**



## “At the end of the day or at the weekend

you always know that you could put on the kettle and there would be a flock of people to come and have a cup of tea. The halls community helped me settle into university life. Our flat had our Christmas dinner together and most of us in halls would commute in and out of fresher and uni events together. It’s these sort of things that foster a supportive network and allowed me to create friendships I know will last a lifetime.”

**Mat Robathan**

# Innovative learning

**At Queen Mary,  
your learning and  
development won't  
stop with your  
studies.**



During your time with us, you'll be able to channel your knowledge and expertise into real-life experiences that play to your individual strengths and passions.

This could be a work placement, community volunteering or designing a research project. Along the way, you'll challenge yourself, help others – and you'll graduate with extra invaluable skills.

### Working in your community

There's an opportunity for you to get involved with the local community – whatever your interests, abilities and time. This could be a community arts project, sports outreach, street doctors, working to support local charities and schools, teaching language classes for refugees or acting as a mentor for young people.



### “I volunteer for a charity called Street Doctors,

which is a movement to empower vulnerable young people around East London with the skills and confidence to save lives. We teach two sessions: the first is haemorrhage control and the other is what to do when someone is unconscious. There's also community sport, where students go out and host sports sessions for local schools and the local community. For giving up their time, students get paid for coaching and umpiring qualifications, so it's kind of a circle of life – you're developing a community while you're also developing yourself. We also have a volunteering group called Open Minds that teach young people around East London about mental health and help to break down stigma.”

**Megan Annetts, Student Representative,  
School of Medicine and Dentistry**

**The Student Consultancy Project** focuses on you gaining valuable skills and experience by acting as a consultant for a local business or charity. You'll be assigned with a real-life business challenge that requires teamwork to solve. You'll work as a group to conduct research and analysis, after which you'll present your findings and recommendations to the business. You will also receive support and training from the Queen Mary Careers and Enterprise team throughout the project.

Find out more at  
[qmul.ac.uk/student-consultancy-project](https://qmul.ac.uk/student-consultancy-project)

### “The Student Consultancy Project requires

team working, building professional networks and strong communication – all essential skills in every career. I've improved my confidence, working in a team and conducting research for a project.”

**Second-year student, School of Biological  
and Chemical Sciences**



# Global opportunities

**Studying abroad isn't just hugely exciting, it can help you to improve a foreign language, boost your confidence and explore new cultures and environments – all of which are valuable life and job skills.**



## Start planning your adventure

Studying at Queen Mary includes opportunities to study abroad at one of our prestigious partner institutions spread around the globe. This could mean either spending a semester/year on exchange or participating in a summer programme.

Find out more at [qmul.ac.uk/international/global-opportunities](https://qmul.ac.uk/international/global-opportunities)

## Explore Queen Mary with a Summer School

Taking a Summer School course at Queen Mary enables you to ease into London life, gain a new perspective, explore a new subject area or supplement your existing studies.

Find out for yourself what it's like to study at Queen Mary by signing up for our Summer School sessions, which last about a month. The course credits can normally be used towards your home degree (if you're already studying elsewhere) and, while you're here, you get to live on campus and learn from internationally renowned academics, take part in field trips, and see a side of London that's far beyond the tourist trail.



## “The two weeks I spent at Sichuan University’s

Summer School were just amazing. It was honestly the best opportunity that Queen Mary has offered me, allowing me to explore Chinese culture and its rich heritage. I've also made such good friends on this trip with other Queen Mary students – we've all kept in touch and definitely want to go back to Sichuan as a group sometime in the future!”

**Emily Ko, Sichuan Summer School (July 2019)**

## “Staying in the UK would have been the easy option,

with familiar surroundings, the same friends and a routine that I was so used to – but there's a wide world out there to be explored.”

**Kyran Penny, Uppsala University, Sweden (2018)**



# Studying abroad

Many of our programmes are available with fantastic study abroad opportunities, opening up the world to Queen Mary students.





We have links with institutions all around the world, and by studying abroad as part of your degree, you'll be able to live and study in a foreign country with full access to that institution's facilities. Placements normally last a full year, though some schools offer the option of studying abroad for the first semester of your second or third year. Studying abroad for a full year means you spend the third year of your degree abroad and return to finish your degree at Queen Mary in your fourth year.

### What's the benefit?

It can be an incredible experience, boosting your CV and exposing you to a whole new world of people and experiences. It's becoming increasingly important to have a competitive edge as a graduate – especially as prospective employers look to hire people with a rounded university experience and skill set. Employers recognise the skills obtained by participation in overseas programmes. These include flexibility, resilience, cross-cultural communication skills, and the ability to adapt to new circumstances and deal constructively with differences.

Studying abroad gives you the best of both worlds: a Queen Mary degree and the chance to live in another country with full access to your exchange institution's student life, welfare services and cultural and sporting facilities. Imagine being able to tell people in the future that you lived for a year in Spain, or Italy, or the USA. By immersing yourself in another culture, you have

the chance to gain an entirely new, global outlook on life and shape your future career path. You'll also gain valuable intercultural communication skills, prove your independence, broaden your horizons, and make memories that can last a lifetime.

### Where can I go?

You can study abroad in Europe or beyond. Queen Mary currently has exchange agreements with institutions in 37 countries across the globe. Where you can go depends on your degree programme, and you'll find full details at [qmul.ac.uk/international/global-opportunities/outgoing-students](https://qmul.ac.uk/international/global-opportunities/outgoing-students)

### "The number of opportunities

you have to go and study and visit our institutional partners around the world is phenomenal."

**Shamima Akter**

### "My time studying abroad in New York City was, as cliché as it sounds, a life-changing experience!"

It was incredible to immerse myself in the way of life in another city, meeting people from all different walks of life and gaining so much self-confidence from my travels. I'd do it all over again in a heartbeat."

**Katie Bevan, Hunter College (City University of New York), USA (2018)**



Katie Bevan, USA

# Preparing for your career

As a Queen Mary student, you'll be well placed to make the transition into your chosen career or further study.



## “Throughout my three years studying Zoology I was a student ambassador

for the School of Biological and Chemical Sciences. I gave presentations and speeches at open days and got to interact with loads of prospective students. I was involved in lab demonstrations for visitors and most importantly I got to eat a lot of free ice cream frozen by liquid nitrogen!”

**Aphrodite Murray-Liddington**



From your first day at Queen Mary, we'll work with you to give you the guidance, tools and opportunities you need to boost your skills and gain confidence. We'll tailor your development around your schedule and the things you want to do – whether that's an industry placement, a part time job on or near campus, or improving your CV. You'll leave us ready to face the future on your terms.

### Your opportunities from day one

Finding the career you want starts as soon as you're on campus. At Queen Mary, you'll:

- get the experience you need through our Student Consultancy Project, industry placements, micro-internships, paid internships or starting your own business or social business. These enable you to develop important job-relevant skills, give you insights into different careers and help build a useful network.
- access the advice you need. That could be through a workshop or 1-2-1 appointment led by our expert Careers Consultants or through our wealth of online information.
- find a job to supplement your studies. You can find flexible work either on- or off-campus through our job agency, and you'll always be paid the London Living Wage.

### Start your own business

If you have an original idea and dream of developing it, we'd love to help you through our Enterprise programme. We offer an Incubator and Accelerator, seed funding, events, enterprise appointments, hacks and more. All this supports you in bringing your business or social enterprise idea to life. [qmul.ac.uk/careers/enterprise](http://qmul.ac.uk/careers/enterprise)

## “With QMentoring, we were able to choose who our mentors were.

We could tell them 'I wanted a mentor from this field, who has this much experience' and they could find an alum who was willing to genuinely help. I still have contact with my mentor now and then. They fixed up my CV and help me with advice, whether it's student life advice or industrial advice, so it's a great way to build a relationship with someone from industry.”

**Shamima Akter**



# Work while you learn

**There are loads of different ways to get industrial or professional experience as part of your degree, from spending a whole year in industry through to work placements and internships.**



Industrial or professional experience offers you amazing opportunities to gain crucial skills, make contacts and build your first professional relationships. It's also a great way to put into practice the things you learn on your course.

### Put your skills to the test

Industrial placements can boost your communication, problem solving and team working skills, but most importantly, they offer you a taste of working life. You'll see day-to-day how the industry works and how different skills are put to use. It looks fantastic on your CV and lets you combine your study with new skills and ways of understanding the subject.

If you opt for a degree with a year in industry, normally you'll spend the year in industry/professional placement after your second year of study. If you're eager to boost your career and really start to understand your chosen industry, a placement could be for you.

Students who opt for the year in industry have seen improved academic performance, increased motivation, enhanced employability, and more chances to meet and network with professionals.

We offer a Year in Industry as part of many, but not all, of our programmes – so do check your options before you apply. Whatever you choose, our Careers and Enterprise service will work with you to make sure you can get some work experience while you're here.

### Gain experience and get ahead

Our Mile End campus is less than 20 minutes from the City, Canary Wharf, the West End and Tech City, offering you amazing opportunities to reach employers and some of the world's most exciting companies. Many Schools can help you find internships and work placements, and our Careers and Enterprise team runs an award-winning work experience programme, taking full advantage of our links to businesses and organisations across London. Develop your skills, strengthen job applications and stand out from the crowd with work experience and internships – we're ready to support you. See more at [qmul.ac.uk/careers](https://qmul.ac.uk/careers)



### Interested in Degree Apprenticeships?

See details on page 107



### “My internship allowed me to get practical experience

in the corporate world of the City. It was hard work but it helped me to challenge myself.”

**Sabrina Alam, BSc Theoretical Physics (2017), now studying her master's at the International Space University**

## David's journey to university wasn't your typical one.

Born in Nigeria, he came to the UK with his family as an asylum seeker when he was nine years old, "living everywhere for a little bit." When the time came to think about UCAS applications, because of his refugee status, David was told he wouldn't be eligible for student finance. Believing this ruled university out, he channelled his energy into researching other routes into fulfilling his career ambition, working in medicine, and eventually took up an apprenticeship at King's College Hospital, London.

Through conversations with the doctors, nurses, and his mum, David learned he could go to university with a specially targeted scholarship. His efforts brought him to Queen Mary's Advice and Counselling Service, which reviewed his case and fought for a scholarship on his behalf. Five days before uni was due to start, "I got the call telling me I had a place and a scholarship!"

David was initially worried about fitting in, but a buzzing and diverse campus and friendly academics have made Queen Mary a second home. David's thrown himself into university life with numerous volunteering roles and societies. He's even found the time to learn how to build a PC.

Throughout so much change, his ambitions have remained the same: "I've always wanted to be a doctor. I want to go into medicine to help people."





# Foundation programmes



Visit [qmul.ac.uk/study/foundation-courses](https://qmul.ac.uk/study/foundation-courses) for more information

## Foundation programmes are designed for ambitious students who have not yet reached the required level for direct entry.

The International Foundation Year and integrated foundation programmes offer an alternative route into Queen Mary's undergraduate programmes. Available in a wide range of subject areas, our foundation programmes give students the subject-specific knowledge and academic study skills required to progress onto an undergraduate degree at Queen Mary or elsewhere.

All foundation programmes are taught by Queen Mary academics on our unique campuses in East London, home to students from 162 nationalities from around the world. During your programme, you will have full access to all student facilities, including welfare, library, social and sport.

For UK students, we offer integrated foundation programmes in Comparative Literature, Drama, English, Film Studies, Geography, History, Linguistics, Modern Languages and Science and Engineering.

For International students, we offer the International Foundation Year (all subject areas) and integrated foundation programmes in Business and Management, Comparative Literature, Drama, Economics and Finance, English, Film Studies, Geography, History, Linguistics and Modern Languages, Science and Engineering.

We provide academic and personal support to prepare you for undergraduate degree studies. The courses are designed to help students gain the study skills required to progress onto an undergraduate degree at Queen Mary or elsewhere.

To apply for the International Foundation Year, you need to submit your application online: [qmul.ac.uk/international-students/pathway-programmes/ify](https://qmul.ac.uk/international-students/pathway-programmes/ify)

To apply for an integrated foundation programme, see the guidance on page 87.

## International Foundation Year pathways

For international students:

### Humanities and Social Science

- Business and Management
- Economics and Finance
- English Literature, Film and Drama
- Geography and Development
- Humanities and Social Science
- Law
- Politics and International Relations

### Science and Engineering

- Biological Science
- Chemical Science
- Electrical Engineering
- Engineering
- Mathematics
- Materials Science
- Physics

### Medicine and Dentistry

- Certificate in Clinical Foundation Studies



### Student's view

“What I love about Queen Mary is its inclusivity. It's the only campus-based Russell Group university in London, so there's a sense of belonging and community. Studying Business Management is rather interesting as I have learnt so many things about the world from various perspectives; pair that with friendly and approachable tutors and it makes for an enjoyable time.

One of the main reasons I chose to stay in Queen Mary to do my degree is because I probably had one of the best years of my life doing the International Foundation Year here. Everyone was so friendly, including the teachers, and I just felt at home. However, the main reason I chose to stay was because the teachers got the very best out of me and allowed me to fulfil my potential. I went from underperforming on my AS-levels, to finishing the foundation year with an A, and now I am studying Business Management at Queen Mary, I could not be happier with what I have achieved.”

**John Tan Yu Choong**







# Biological and Biomedical Sciences

**Our programmes span the whole of the biological and biomedical sciences, from the study of whole organisms to genetics and molecular biology.**

Our Biomedical Sciences, Medical Genetics, Neuroscience, and Pharmacology and Innovative Therapeutics programmes are co-taught between the School of Biological and Chemical Sciences and Barts and The London School of Medicine and Dentistry and focus on the more medical aspects of the subjects. If you're interested in ecology or conservation, our Zoology programme focuses on the underlying concepts that shape our understanding of animal diversity, including physiology, neurobiology and behaviour. Those more interested in the molecular side of biological science can choose our programme in Biochemistry, which includes the study of molecular biology and chemistry, respectively. Our Biology programme offers a strong grounding in biological sciences and combines the study of molecular biology and chemistry.

Our breadth of expertise is part of what fuels our multidisciplinary research, and our well-established links with leading London institutions – including the Natural History Museum and Kew Gardens – offer students opportunities unique to London. In all of our programmes, students are equipped with a solid grounding in their scientific discipline and encouraged to discover their own interests and specialisms.

## **What are we up to?**

Britain's bees and other pollinating insects are in trouble, and further declines in their diversity and abundance would have a serious impact on how the natural world functions, including our crops. Researchers at the School of Biological and Chemical Sciences have come up with innovative new approaches to improve the regulation of pesticides, known to be one of the major causes behind recent declines in pollinator numbers.

Their research suggests using a molecular medicine approach inspired by techniques used to evaluate the risks of new medicines in humans. Through RNA sequencing of pollinators exposed to different pesticides, we can understand the genes and molecules involved in pesticide responses, how these vary between pollinator species and how susceptible species are to certain pesticides.

Visit [qmul.ac.uk/study/biological-and-biomedical-sciences](https://qmul.ac.uk/study/biological-and-biomedical-sciences) for more information

Dr Yannick Wurm, Reader in Bioinformatics, said “Traditionally, toxic effects of pesticides were evaluated by examining the survival of honeybees after exposure. Whilst new recommendations have improved testing methods, for example by encouraging assessment of both the short and long-term effects in multiple bee species, further improvements are needed to ensure the potential risks of new and existing pesticides are fully assessed.”

The new approach would help us better understand and predict the vulnerability of diverse pollinator species to existing and future pesticides. Ultimately, this would help discover new pesticides with minimal ill effects on pollinators, allowing them to flourish.

### Where could biological and biomedical sciences take you?

Graduates from our biological and biomedical sciences programmes go on to work in a wide variety of careers\*. Some apply their degree knowledge directly, working in the sciences, while others move into other sectors, such as the media, technology or finance.

Recent graduates have found work with GSK, NHS England, EY, Deloitte, the National Hospital for Neurology and Neurosurgery, Princess Alexandra Hospital, London Imaging Centre, Great Ormond Street Hospital, and the Institute of Cancer Research.



#### Our alumni

“My four years at Queen Mary laid a brilliant foundation for my future. I studied BSc Biochemistry and undertook my final year project at a biotechnology company, BioMoti, focusing on engineering cancer therapeutics. This fuelled my interest in the field of cancer research, which led me to study MSc Cancer and Molecular Pathology and Genomics at Barts Cancer Institute. No other university provided such a breadth of modules taught by leading experts. Whilst at Queen Mary, I took advantage of the many great opportunities including interning at BP, hosting a weekly radio show for Quest Radio, working as a student ambassador and interning at Pfizer through QMentoring. Not only did this add colour to my CV, but it also allowed me to develop soft skills like teamwork and communication which strengthened my successful application for the Science and Engineering Fast Stream for the Civil Service. I am forever grateful for my time at Queen Mary.”

**Tasqeen Ahmed, BSc Biochemistry (2015)**  
**Vaccines and Immunisations Policy Manager at**  
**Department of Health and Social Care**



#### Student's view

“I’ve really enjoyed learning about the latest research from enthusiastic lecturers and exchanging ideas with students from around the world. This has allowed me to develop as a biomedical scientist, to grow as a person and to develop lifelong interpersonal and networking skills, regardless of what I do in the future. My favourite module so far has been anatomy which was enjoyable because of the visual and practical learning aspects. We had the opportunity to look at dissections. One assignment involved assembling a skull back whilst naming each part. It sounds difficult, but you forget it’s an assessment once you’ve learned about the bones – and thanks to the extra challenge of trying to beat other students’ time! The School and University offer a lot of support. You can visit lecturers during their office hours or email them when you need any help or have a question. Secondly, you have an Advisor who is with you throughout your time at Queen Mary. Your Advisor is usually part of your School and can help you with anything from looking over your papers to talking about personal issues.”

**David Ajibade, BSc Biomedical Science (3rd year)**

# Business and Management

Visit [qmul.ac.uk/study/business-and-management](https://qmul.ac.uk/study/business-and-management) for more information

**The study of business and management at Queen Mary draws on, and complements, a huge range of disciplines, from economics, philosophy and psychology to social geography, politics and history.**

These feed into a deeper understanding of business and management practices and how they shape our society. All organisations, whatever size and structure, need leaders with the skills to adapt and thrive in today's climate. They need people who understand how business decisions impact the world. Our aim is to create responsible future leaders with the know-how to interpret and analyse problems and present innovative solutions. Queen Mary's unique approach offers you an inspiring and challenging education close to the financial heart of the UK.

Our teaching is underpinned by the values of social justice, sustainability and good governance. You'll explore public, private and not-for-profit sectors as part of a thriving international community, gaining real-life work skills and professionally-recognised certifications. We're proud to be a socially-engaged School with a multidisciplinary, mindful and responsible approach to business and management. We encourage all our students to challenge assumptions and search for solutions based in the real world.

You'll be taught by internationally-renowned experts, offering you a rich and robust introduction to subjects of huge importance to society. Our undergraduate programmes are designed to enable you to develop a particular focus in areas including marketing, accounting, finance, human resources and international business. At the same time, you'll build a broader understanding of management and business as a whole.

## **What are we up to?**

The School of Business and Management was created to build an outstanding research centre where scholarship of international quality can flourish. We focus on the economic, social and historic context of business and management, as well as governance in the private, public and third sectors. Many of our academics work directly with governments and legal systems around the world to shape public policy, and as a student here, you will have the opportunity to learn from experts who are truly passionate about what they teach.



These include Professor Pedro Martins, Secretary of State for Employment in the Portuguese government (2011/13); Professor Colin Haslam, technical advisor to the United Nations Environment Programme/Green House Gas Protocol on carbon emissions and financial risk; and members of the Centre for Equality and Diversity, who advise national and international bodies including the BBC, UK government ministries and the European Union.

### New programmes

At the School of Business and Management, we are continually developing our portfolio of courses to reflect the ever changing international business landscape. Our new courses have been designed to equip you with the skills needed to work in an international environment and prepare you to become a global citizen. These new courses include:

- BSc Business Management with Chinese and Year Abroad
- BSc International Business with a Year Abroad\*

### Joint programmes

Our joint degree programmes allow you to combine the study of business and management with a range of other disciplines, giving you the flexibility to merge your interests and gain knowledge in more than one field. If you're interested in studying and living in a different country, a semester abroad at one of our partner universities might be for you. As part of our International Exchange Programme, you could spend time studying in the USA, Canada, New Zealand, Australia, Singapore, or Hong Kong.

\*Subject to approval

### Where could business and management take you?

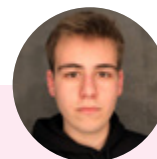
Graduates from our business degrees gain crucial skills that are highly valuable to employers: analytical and critical thinking, creative approaches to problem solving, numeracy and confidence in interpreting and applying business data, and the ability to allocate resources and undertake projects. Some apply their knowledge directly, entering roles such as business analyst or marketing and sales manager, while others move to areas such as media, law or finance.

Recent graduates from the School of Business and Management have been hired by Deloitte, JPMorgan, Unilever, Bloomberg, Chanel, Amazon, Facebook and Environmental Defense Fund Europe.

### Our alumni

"The School of Business and Management could not have set a better foundation for me. Taking part in the QConsult programme gave me an insight into working life, which then progressed into a position as an SBM Communications Intern. The endless opportunities that the School provided gave me that extra push to enter the corporate world. Now, heading into a graduate role I feel confident, as I have explored different job sectors and experienced working life."

**Pasmi Sanghvi, BSc Business Management (2019)**



### Student's view

"The support from the School of Business and Management has been great. From careers, to academic and personal development support, the School has allowed me to excel and has enabled me to stand out as a candidate in today's extremely competitive job market. For example, the professional development courses the School offers to us are of vital significance to enhancing our employability.

With all the resources that have been made available to us, the School of Business and Management has managed to create a stimulating environment in which we thrive and are supported to work to our best capabilities.

The range of skills we are able to develop here is unimaginable!"

**Georgi Stoyanov, BSc Business Management (3rd year)**



# Chemical Sciences

**Queen Mary's Chemistry and Pharmaceutical Chemistry programmes are accredited by the Royal Society of Chemistry, and students are taught by world-class experts in organic, inorganic and computational chemistry.**

Chemistry is often thought of as the central science, bringing together mathematics, physics, biology and medicine. We're proud of our vibrant research culture and ensure that every new discovery informs our taught courses, with the latest findings shared in weekly seminars.

Chemistry, pharmaceutical chemistry and biochemistry – the science of applying molecular concepts to complex biological systems – are taught in the Joseph Priestley building, which recently benefitted from a £5.2 million investment in a new undergraduate teaching lab. This

investment into the lab has added 30 fume cupboards, a new teaching zone and benching for modern equipment. The design itself is similar to commercial laboratories, preparing students for the next stage of their careers.

Because of our Royal Society of Chemistry accreditation, Chemistry and Pharmaceutical Chemistry graduates gain Associate Member status.

Biochemistry, Chemistry and Pharmaceutical Chemistry are all available with an MSci, Year in Industry/Research or Year Abroad option.

## **What are we up to?**

Graduates from our chemistry programmes achieve great things – and one of the best ways to see that is with our Chemistry, Pharmaceutical Chemistry and Biochemistry with a Year in Industry students.

A Year in Industry offers students work experience in a real-world setting and a fantastic chance to practise and hone their skills. Aneesah and Nishma found a placement with GlaxoSmithKline (GSK) with support from their supervisors.

Aneesah, who would like to go into research, worked in the medicinal chemistry department: "During my industrial placement with GSK, I worked on early-stage drug discovery projects where my role entailed devising and carrying out effective synthetic routes to deliver target molecules.

Visit [qmul.ac.uk/study/chemical-sciences](https://qmul.ac.uk/study/chemical-sciences) for more information

Throughout my placement, I had the chance to learn a wide range of laboratory techniques and gain a deeper understanding of the drug discovery process and the pharmaceutical industry. My year at GSK has been fantastic. It's not only helped me develop as a chemist, but also as a person and it's allowed me to meet many incredible people."

Nishma, meanwhile, worked in the pharmaceutical supply chain: "I was fortunate to be a part of the micronising team, where I carried out various analytical testing techniques on both commercial and stability batches on micronised active pharmaceutical ingredients. The programme has given me the opportunity to develop a variety of key skills and competencies and demonstrate them in the working environment. It's been a brilliant year of developing both personally and professionally."

### Where could chemical sciences take you?

Our graduates often work in a range of sectors, including media, technology, finance, and clinical and laboratory work. Many also move on to postgraduate study.

Recent employers have included GlaxoSmithKline, Boots UK, Hammersmith Medicines Research, St George's University Hospitals NHS Trust and KPMG.



### Our alumni

"I decided to study chemistry at Queen Mary because I researched the course and found that it had a very unique mix of both theoretical and practical work. The modules seemed really interesting and applicable to scientific research.

One of the things I enjoyed most about my course was my industrial placement year at GlaxoSmithKline. It was a really insightful experience being able to see how the theory I learnt and the lab work I did is used at a global pharmaceutical company.

Studying chemistry has made me a very detail-orientated person as well as giving me analytical skills and the ability to sort through information very systematically. These are all essential transferable skills that all employers look for, so this will really put you at an advantage when you're applying for jobs or a PhD."

**Zahra Arjomand Nia, BSc Pharmaceutical Chemistry with a Year in Industry/Research (2019), Technology Consultant at Capgemini**



### Student's view

"Chemistry is one of the three core subjects within science, and my favourite aspect of science. From studying the chemical structure of amino acids to analysing a chemical sample in a mass spectrometer, the beauty of chemistry is what caught my attention and made me passionate about the subject. I was surprised to see how exciting and interesting chemistry can be – especially through lectures taught by some of the most experienced lecturers in London. The common love for the subject radiates throughout the School of Biological and Chemical Sciences. Having such a diverse cohort of chemistry students and being taught in the newly built labs has been the best part of my experience at Queen Mary.

I chose Queen Mary as my place to study mainly due to the lively atmosphere and helpful facilities on campus. I have also had the opportunity to complete a paid consultancy programme hosted by Queen Mary all in my first year. I appreciate the emphasis put on both education and work."

**Tahmina Ali, BSc Pharmaceutical Chemistry (3rd year)**



# Comparative Literature



Visit [qmul.ac.uk/study/comparative-literature](https://qmul.ac.uk/study/comparative-literature) for more information

**The comparatist George Steiner once said “comparison enables us to see more”, and that’s exactly what our Comparative Literature programme does.**

On this course, you will study literature in translation from a huge variety of countries, cultures and periods, relating this to everything from history, psychology and philosophy to painting, film and music. Studying comparative literature will expand your literary and

cultural horizons. You can explore modern fairy tales, postmodern novels or short stories from Europe, South Asia, the Caribbean, Latin America, China and Japan. Or you might be discovering more about movements such as romanticism or modernism, as well as a host of themes ranging from madness to migration to adaptation. As well as our wide-ranging and creative modules, you can also study modules in modern languages, film studies and linguistics, as well as from other humanities schools.

Studying comparative literature helps you to develop an impressive set of transferable skills, including analytical ability, highly sophisticated reading skills, the ability to put things in context and first-rate presentation skills.

## **What are we up to?**

The staff in the Department of Comparative Literature engage in interdisciplinary research around the world, from Europe to China, and from South Asia to Australia, covering different periods while still sharing a focus on

world Literature. The intellectual profile of the Department is broad and dynamic, and the research interests of our staff are wide-ranging.

We enjoy exciting collaborations across Queen Mary and with external organisations, including the iconic luxury department store, Liberty London. Our staff includes the Co-founder and Co-Director of the Centre for the Study of Childhood Culture with the V&A Museum of Childhood, the Honorary Scientific Advisor to the Institute of Foreign Literatures at the Chinese Academy of Social Sciences, the founding co-editor of *Angermion*, the Yearbook of the Centre for Anglo-German Cultural Relations at Queen Mary, and the translator of the Marquis de Sade’s *120 Days of Sodom* for Penguin Classics. Several staff also work on some of the most pressing issues faced by our world today through their research in the fields of ecocriticism, disaster studies and post-colonialism in the era of globalisation and climate change, alongside the related political, social, cultural and regional vulnerabilities arising from these.

## Joint programmes

Comparative literature can be studied jointly with a modern language (French, German Hispanic or Russian Studies), or with history, linguistics or film studies. These subjects allow students to approach similar issues and topics from two distinct angles, using the knowledge and skills from one subject to deepen their appreciation of the other. Language programmes include a compulsory Year Abroad, and all comparative literature students may choose to take a Year Abroad.

## Where could comparative literature take you?

Comparative literature graduates go on to enjoy a wide variety of careers. Some apply their degree knowledge directly by working in education and the arts, while others move into areas such as media and PR.

The broad range of skills gained through our comparative literature programme, coupled with multiple opportunities for extracurricular activities and work experience, enable our students to move into careers such as editing and copywriting, publishing, banking, corporate services and governance assistance, event management and freelance writing.

Writing skills are also highly sought after in many other careers, such as journalism, advertising and marketing. Comparative literature graduates may also go into professions such as law (via the Solicitors Qualifying Examination) and primary and secondary teaching.



### Student's view

"I chose to study comparative literature because I didn't really want to be limited in what I could study and what areas I could study. I really like that I've been able to take courses in anything from German thought to queer theory to climate change – there really are no limits. I chose to study at Queen Mary because I really liked that it's a campus uni but that it was also in London so I kind of got the best of both worlds. I also really liked Queen Mary's comp literature course in particular because I felt that it was really not limited to Western literature, which I'd see at other unis, and I also really liked that I had the opportunity to study abroad.

I think what I like the most about studying comparative literature at Queen Mary is that it's really varied, and I like that it's allowed me to see more in the world around me. It's more than just books or poems. And I really like that I'm able to go to Singapore for a year, which is really cool."

**Sarah Garrod, BA Comparative Literature with a Year Abroad (final year)**

### Our alumni

"Studying comparative literature prepared me for my current role because it gave me the analytical and critical thinking skills that I need to perform at a high level in a FTSE 100 company. I'm the lead for social media globally for BT and that means I need to criticise and analyse a huge amount of work coming in day in, day out for various stakeholders within the business. Comparative literature gave me that skill set. It also gave me the ability to hone my copywriting skills. When I first started at social media this was really key and going out into industry I didn't realise how valuable that would be."

**Melody Meacher-Jones, BA Comparative Literature (2014)**

Prof Vaclavik's research explores the intersections between fashion and fiction using Lewis Carroll's Alice's Adventures in Wonderland.

# Computer Science

## Computer science plays a key role in solving everyday problems and improving our quality of life.

We offer a vibrant and multidisciplinary learning environment where our enthusiasm for research defines our programmes, keeping our teaching exciting and relevant.

We have excellent industry links and partnerships, working together on commercial and research projects. We ensure you are ready for the world of work, with relevant degrees accredited by the Chartered Institute of IT (BCS). Proximity to London's Tech City also means that you can stay up-to-date with the latest challenges and developments in the industry – and develop your own solutions.

Computer scientists at Queen Mary are discovering new ways to use IT and pushing the boundaries of innovation in digital music, computer vision, game AI, and more. We are well known for our pioneering research, facilities and educators and pride ourselves on our world-class projects. With technology becoming integral to everything we do, the School is helping to define a rapidly evolving industry.

### What are we up to?

The PAMBAYESIAN project, led by Norman Fenton, Professor of Risk and Information Management, has developed personalised risk assessment tools for people suffering chronic medical conditions like rheumatoid arthritis (RA) and diabetes. These tools, typically run on smartphones, are based on novel AI methods. They enable people to better monitor themselves and provide their doctors with more accurate information.

This leads to improved outcomes for patients whilst saving the NHS money by having fewer and more focused medical appointments, and less wastage on expensive medication. The 'added intelligence' of this solution is currently being integrated into a web platform for RA patients in several NHS trusts that is provided by a health technology company.

### Joint programmes

Computer Science with Maths and Computer Science with Management (ITMB) are both available through the Department of Computer Science, taught jointly with the School of Mathematical Sciences and the School of Business and Management, respectively.

All our programmes also include an optional Year in Industry – a fantastic chance to gain experience and make contacts – or a Year Abroad with one of our partner institutions.

Visit [qmul.ac.uk/study/computer-and-data-science](https://qmul.ac.uk/study/computer-and-data-science) for more information



## Where could computer science take you?

One of the most exciting parts of computer science is the growth of new fields and sectors that you might not have heard of just a few years ago. Our students graduate with a strong skillset, ready to adapt to changes and opportunities. Current industries popular among graduates include finance, education, health, media and IT. Recent graduates have gone on to work for Google, IBM, Disney, the NHS, eBay, and Goldman Sachs, or moved into research.

## Have you considered one of our Electronic Engineering degrees?

With technology changing rapidly, there's huge demand for graduates who can create, understand and alter electrical systems.

A degree in electrical, electronic or computer systems engineering teaches you to be creative, innovative and flexible in devising engineering solutions to solve real world problems.

The subject brings together numerical, computational, analytical and technical tools in a systematic way. You will also learn the foundations of programming. There's no typical career path: people with these skills are in demand across many sectors.

Search for electronic engineering programmes at [qmul.ac.uk/undergraduate/coursefinder](http://qmul.ac.uk/undergraduate/coursefinder)



### Our alumni

"I work on the YouTube Go-To-Market Team at Google. We deal directly with Google's largest partners, creators and product teams to help launch new products and features on YouTube, so users have the best experience possible. A Computer Science or Electronic Engineering graduate is more valuable than gold to employers. The skills you gain throughout your time at university can be applied in any job. I started off my career in consulting, then moved into strategy and tech.

I can confidently say that the knowledge and skills gained from my degree have given me a step up when applying for roles, and more importantly, boosted my ability to excel professionally. It will be the most challenging and rewarding period of your life!"

**Hassan Abdel Rahman, BEng Electrical and Electronic Engineering (2015)**  
**Subject Matter Expert, YouTube Go-To-Market & Support Solutions**



### Student's view

"I wasn't sure if I wanted to go to university but when I visited Queen Mary, I knew it was the right place for me. The facilities are in one place, it has great transport links and the staff and students are really friendly and helpful.

In two years, I have learnt to programme in over seven languages and written and tested code for a range of different applications and software programmes ranging from full websites to fully working applications.

I enjoy being challenged and love that a lot of my modules are based on solving real life problems. In one module, I developed a fitness app that gave health advice and recommended workouts to help the user meet their fitness goals. I also worked on a weather app to help holiday makers plan their activities. I really like that we are encouraged to build technology which will help make lives easier for others and positively impact society."

**Chloe Bugeja, BSc Computer Science (3rd year)**

# Dentistry

Visit [qmul.ac.uk/study/dentistry](https://qmul.ac.uk/study/dentistry)  
for more information



**Studying in the capital means being at the forefront of modern dentistry. Providing oral healthcare in a hugely busy and diverse city gives students unparalleled challenges and opportunities to learn.**

Situated next to The Royal London Hospital, the largest new hospital in Europe and home to London's Air Ambulance, Barts and The London School of Medicine and Dentistry is perfectly located in Whitechapel. Our students work side-by-side with pioneers in public healthcare, helping to change the lives of people across the world.

The Dental School opened in 1911 and we have a long and proud record of internationally recognised excellence in oral and dental science. In the most recent QS World University Rankings by subject (2021), we were placed third in the world for research citations, and 14th in the world overall for Dentistry. The Institute of Dentistry at Queen Mary – the first new dental school to be built in the UK for over 40 years – follows a new and innovative curriculum. You'll study care of the mouth, including prevention and treatment of dental diseases, screening for oral cancers, managing trauma (for example, the results of road accidents or violence), orthodontics and oral surgery. The Institute houses state-of-the-art facilities, providing

one of the most modern learning environments for dental education of any UK dental hospital. You'll also undertake extended outreach periods in a number of locations in the Docklands, Southend and Stratford.

With support from tutors, you'll be encouraged to develop an independent attitude to learning. Important features include small group teaching, practical clinical skill sessions, lectures and symposia, communication skills training and an extensive outreach teaching programme.

Set in the heart of a vibrant and energetic part of London, our Whitechapel campus is surrounded by bustling markets, art, culture and food, with the City of London and historic Brick Lane on its doorstep. Barts and The London Students' Association (BLSA) has its own set of representatives, societies and sports clubs, plus a bar, games room and dance studio on site. You can also live at our Charterhouse Square campus in the heart of the capital close to the Barbican and Farringdon. This is home

to some of our renowned research institutes including Barts Cancer Institute, Wolfson Institute for Preventive Medicine and the William Harvey Research Institute. We're proud that the 2020 National Student Survey ranked us first in London for student satisfaction.

### What are we up to?

During the Covid-19 pandemic, our dental staff and students volunteered to assist the NHS, working in hospitals, including the maternity wards at The Royal London, to support their medical colleagues and patients.

Our recent research has been instrumental in improving oral health in children in the UK and Sudan, developing the world's first diagnostic test for the early detection of oral cancers, and the creation of new toothpastes designed to slowly release calcium, phosphate and fluoride ions. Professor Robert Hill, chair of dental physical sciences, became the first British winner of the prestigious Varshneya Award in 2019 for his pioneering work developing Biomin toothpaste. Following this research by Queen Mary staff to exploit fluoride glass technology in the dental field, Biomin Technologies produced toothpaste containing these glasses, which dissolve slowly over 10-12 hours releasing calcium, phosphate and fluoride ions.

"It is this slow release which is particularly beneficial compared to conventional toothpastes where the fluoride is washed away by salivary flow fairly quickly after toothbrushing", explained Professor Hill. Biomin Technologies now sells its toothpastes across Europe, China, India and Australia, and the company is licensing its technology to dental companies for varnishes, composite fillings and adhesives.

**Ranked 14th  
in the world  
for dentistry**

By QS World University Rankings by Subject 2021



### Student's view

"Living in such an amazing, diverse part of the city means you can explore new cultures and experiences. The range of dental outreach clinics gives you a comprehensive view of dentistry, while allowing us to interact with the UK's different demographics and socio-economic groups. A hands-on approach, clinical-based teaching and the ever-changing aspect of the field (especially post-COVID) keeps it interesting. And there's a lot of student support available from your tutors which can really help. I hope my degree is the start of becoming a highly skilled and competent dentist. The Mile End campus has an excellent range of facilities that allow students to exercise, eat, study and enjoy themselves. The Whitechapel campus is located right next to many places that can easily accommodate most students' needs. The campus environment is chill, with many areas nearby that have so much to offer. Canary Wharf, Westfield, Shoreditch and Central London are all about 20 minutes away by public transport – you will never run out of things to do!"

**Rajan Chander, BDS Dentistry (5th year)**



## Alternative programmes

You can apply to four dental schools via UCAS, but did you know you can add a fifth choice? The extra slot can be used to apply to a non-medical or non-dental course. You may be interested in our BSc Oral Health degree, which teaches you the skills and knowledge required for you to register with the General Dental Council as a dental therapist or hygienist on graduation.

If you're looking for other opportunities for your non-dental and non-medical choice, the life sciences courses offered at Queen Mary could be the answer. Whether you dream of solving medical or dental problems through the development of innovative technology and devices, becoming a laboratory scientist, or getting involved in shaping healthcare policies, these programmes offer you exciting routes into careers that are shaping the future of global healthcare:

- Biomedical Engineering BEng
- Biomedical Sciences BSc



Dental Lab

## Where could dentistry take you?

Our BDS Dentistry graduates have an enviable employment record, with 99 per cent going on to highly skilled employment or further study (2016/17 Destination of Leavers of Higher Education survey).

Most of our BDS graduates typically work as Dental Foundation Trainees, after which they either remain in the NHS or move into the private sector. A number of our graduates also work as dental practitioners in hospitals, in the community, or the armed forces, with many working overseas.

Our BSc in Oral Health will enable registration with the General Dental Council as both a Dental Hygienist and a Dental Therapist.



### Our alumni

Being in London means there's always something to do, no matter what you're into. There's a wide array of societies that you can join - I met my husband through one of them! The Dental Hospital is a fantastic place to learn and is well run with its own laboratory. I spent a lot of time in the lab and learned essential skills in creating well-fitting dentures in preparation for my career. I am a Community Dental Officer, I treat patients with dental anxiety and other additional needs and am qualified in providing inhalation sedation. I was previously a Dental Core Trainee in the Oral and Maxillofacial Surgery Department. The degree programme exposes you to patients very early on which allowed me to build my interpersonal skills at the initial stages of my studies. The best thing about studying at Barts is that everyone is very friendly and approachable - there's always help if you need it. Make sure you work hard but don't forget to have fun, and you will make lifelong friends that will help support you through your dental career."

**Mina Leung, BDS Dentistry (2016)**  
**Community Dental Officer**



# Drama

Visit [qmul.ac.uk/study/drama](https://qmul.ac.uk/study/drama)  
for more information

## Queen Mary is one of the world's leading centres for the study of theatre and performance.

We focus on developing students' knowledge and expertise, both practical and theoretical, about performance, its histories, how it intervenes in the present, and how these things might affect the future. We're not tied to rigid definitions of performance, and investigate how it can be used in different settings – theatres, art galleries and museums, schools, prisons, warehouses, and the street – in the UK and internationally. London is one of the great theatre cities and a creative hub. With a commitment to social justice, the Department of Drama draws on the work of our activist theatre makers,

including Paul Heritage and Lois Weaver, creating new ways of thinking about the classics. We are intentional about including new and marginalised texts, voices and communities to examine life through performance.

Our main areas of expertise are on cultural histories of performance, transnational performance, live art, and socially engaged and applied performance. Our teaching team is globally recognised and includes Professor Jen Harvie, Professor Nicholas Ridout and Professor Bridget Escolme, as well as activist playwright Mojisola Adebayo, radical writer Michael Shane Boyle and participatory performance expert Caoimhe McAvinchey. The most recent Research Excellence Framework (2014) rated us first in the UK for research.

Three Arts Council England organisations are based at Queen Mary: People's Palace Projects, Phakama and Wasafiri. The Department is a key partner in A Season of Bangla Drama and the Live Art Development Agency.

### What are we up to?

The Verbatim Formula (TVF) is a collaborative participatory arts project founded by Maggie Inchley, Senior Lecturer in Performance and Director of Schools Engagement (Drama). TVF specialises in sharing the stories of young people in care and care leavers, including those in higher education.

By using the Headphone Verbatim method – a technique where a performer listens to audio recordings of a testimony through headphones while saying what they hear out loud, becoming a vessel for the original speaker's voice – TVF manages to share the experiences of care-experienced young people with wider audiences in an approachable, and surprisingly impactful, way.

Dr Inchley's work has led to a series of residential workshops at Queen Mary and three other London universities, offering action-oriented research with participants as co-researchers.



Other research based at Queen Mary includes People's Palace Projects, exploring how people's worlds can be transformed through art, including performances and participatory arts projects. The projects bring artists, activists, academics and audiences together for projects that address a wide range of social justice and human rights issues, all based in the East End.

### Joint programmes

We offer English and Drama, and Film Studies and Drama, giving students exciting opportunities to explore interrelated concepts and theories across subject, and to put into practice the things they learn through theatre, film and performance.

### Where could drama take you?

Drama graduates go on to work in a variety of roles, including performing, programming and producing, and in sectors as varied as the arts, media, publishing and teaching, theatre, social work, art therapy and TV production. Recent drama graduates have been hired by the BBC, Electric Cinema, London Film Museum, National Theatre, Odeon and Shakespeare's Globe.



#### Our alumni

"I went to university as I wasn't ready to work, not yet knowing what I wanted to do with my life. I knew I needed to find myself and chose Queen Mary as the place to do it because it was a Russell Group university with a good reputation. When I came to visit I enjoyed the energy of the place and the staff on the course, they were my type of crazy, warm and passionate about the subject. As a freelancer, I can commit to a project, give it my all as I know it can't last forever, and I have to get what I can while giving all I am to the finite experience. I've travelled around the world and directed theatre in forests in Portugal, villages in Africa and schools and theatres around the world, performing at the V&A, TedX and the Olympics. The nature of my work means that when I need to commit to my own writing/performance I simply don't take jobs and I can relax and work without worrying about being late to/absent from anywhere, allowing me to be a part of the arts world I teach, rather than separated from it."

**Elliott Ajai-Ajagbe Daley, BA English and Drama (2007)**



#### Student's view

"Queen Mary is so brilliantly vibrant and diverse and I have had the best time studying here during the first year of my drama degree.

This year has been key in helping me decide what I want to pursue in the future as well as the modules I want to take in the second year. The staff here are so supportive and will only ever want you to do your best whilst still giving you the opportunity out of seminar hours to talk about your work and how to improve. The teaching is not just on a theatre specific level, it explores so many other subject elements such as history, sociology, and politics.

At Queen Mary, I have grown as an individual through living in London and having to educate myself on my surroundings and the normal life lessons that come with being an adult! From day one it has been non-stop learning inside and outside of the classroom. I have loved it so much, and it's an experience I wouldn't have got anywhere else."

**Elliot Douglas, BA Drama (2nd year)**



# Economics and Finance

**From interest rates and food prices, to how people and businesses respond to global challenges, economics sits at the heart of our society and shapes the world.**

The School of Economics and Finance offers a broad curriculum, providing a solid foundation in the three core areas of economics: microeconomics, macroeconomics and quantitative analysis, as well as finance.

Our friendly and engaging learning experience is driven by research-led teaching and offers a varied programme of lectures and guest speakers, complemented by a wide range of extracurricular activities and active student societies.

We are one of the few UK universities to offer training and access to Bloomberg trading terminals in our designated trading room, as well as an Interactive Brokers Trader Workstation (TWS) and FXCM FX Trading Station, as used by economists in finance and government for data analysis

and simulation. You'll also benefit from access to the major statistical databases and software packages and free access to the Financial Times and The Economist.

Our flexible and innovative programmes give you the skills needed to succeed in the future.

The School is located on Queen Mary's Mile End campus, a creative and culturally diverse area in east London, close to London's financial districts in the City and Canary Wharf. This proximity means that you'll benefit from our close links with leading names in the banking and financial industries.

You can combine our degrees with an Integrated Foundation Year, a Year Abroad, or a Year in Industry, and all of our finance degrees are accredited by the Chartered Financial Analysts Society so students can take IMC professional qualifications without having to go through two more years of study.

## **What are we up to?**

Our academic staff are at the forefront of influential research in economic and finance policy and thought. Our teaching is driven by experts in the field, ensuring that you will be studying at the cutting edge of the discipline.

Academics and visiting professors from Queen Mary have strong links with industry, including the Bank of England, HM Treasury, global financial institutions and numerous professional bodies. They are engaged in work that, as well as bringing the latest insights to the classroom, has

Visit [qmul.ac.uk/study/economics-finance](https://qmul.ac.uk/study/economics-finance) for more information

an impact on society. Our academics are often featured in national and international media outlets such as the Financial Times, The Guardian, The Wall Street Journal, The New York Times and The Nikkei.

By way of example, Dr Francesco Fasani, Reader in Economics and Finance, received a grant from The Nuffield Foundation for his research project on asylum policies in Europe and the ongoing refugee crisis. This will assess the effectiveness of asylum policies in reaching their stated objectives, as well as other unintended, but potentially relevant, longer-term consequences. The combined findings will provide evidence on the role of asylum policies.

### Where could economics and finance take you?

All our degrees offer specialised courses tailored to the students' needs, giving you access to academic and professional routes in economics, finance, politics, government, management, consultancy and statistics. Economics and Finance graduates from Queen Mary are highly sought after in the market. Many of our students go on to pursue postgraduate studies at the University and other world-leading institutions.

Recent graduates have found employment at organisations including JP Morgan, UBS, Goldman Sachs, Barclays, Santander, KPMG, EY, Deloitte, PwC, Financial Ombudsman Service, Government Economic Service and Thomson Reuters. Roles include finance and investment analysts and advisors, management consultants, business analysts and economists.

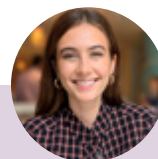
The School of Economics and Finance has a dedicated careers team, giving our students the advantage of one-on-one appointments for career discussions, support with job applications, practice interviews, work experience and internship opportunities and employability events specifically aimed at helping you achieve a graduate career in finance and economics.



#### Student's view

"The best thing about studying here at Queen Mary is the incredible network of alumni and employers it provides access to. There are always opportunities for exclusive employer insight events enabling you to make vital connections for after you graduate. Studying Economics here, the events I've had access to have already demonstrated the real-world applications of what I've been learning, something which only further motivates my study. The staff are always happy to help with any issues – they make studying here, even in these challenging times, an incredibly enjoyable experience."

**Callum Sycamore, BSc Economics (2nd year)**



#### Student's view

"The lectures and tutorials are structured with a balanced mix of both quantitative and qualitative fundamentals. I started off with minimal comprehension of the industry, but I certainly left with a knowledge of core investment concepts, and an incentive to explore additional asset classes and economic branches."

**Mara Rodriguez, BSc Economics (3rd year)**



# Engineering



Visit [qmul.ac.uk/study/engineering](https://qmul.ac.uk/study/engineering)  
for more information

## Engineers are the ultimate creative problem solvers: they find solutions to issues and work to improve the world.

Here at Queen Mary, we equip students with sophisticated technical and problem-solving skills, preparing them to push boundaries and start exciting careers in a wide range of engineering fields. Queen Mary has a long, proud history of teaching engineering, throughout which we've maintained our passion for innovation and discovery. Our engineering degrees are delivered by the School of Engineering and Materials Science and the School of Electronic Engineering and Computer

Science, two of the oldest academic schools of their kind in Britain. Engineering is a wide-ranging discipline; from Electrical Engineering to Aerospace Engineering, Biomedical Engineering to Robotics Engineering, Design, Innovation and Creative Engineering to Computer Systems Engineering, we have experts and experience in subjects that are at times complementary but often distinct. The content of our teaching is influenced by our leading research. We attract staff at the forefront of their specialism and currently have nine Fellows of the Royal Academy of Engineering. The most recent national assessment of the quality of university research (REF 2014) placed us sixth in the UK for electronic engineering and seventh for general engineering research. Our intensive degree programmes involve a mixture of lectures, laboratory work and hands-on projects. Teaching material is delivered via lectures and our online learning environments, supported with small group tutorials and workshops, in which you will have the opportunity to explore problems, put theory into practice and work

through past exam papers. Close links with industry and proximity to London's Tech City bring us real-world problems to solve and help to launch our innovations. We have invested £30m into refurbishing and expanding our engineering labs so that researchers and students have access to state-of-the-art facilities.

### What are we up to?

Queen Mary is a hub of ground-breaking, world-changing research. Whether it's working with Wave Energy Scotland to improve wave energy efficiency off the UK coasts, bioengineers developing a complex in vitro model of human tumours, advancements in the field of soft robotics, or a five-year project into the future of music technology, academics and students use their knowledge to shape the world. It's an ongoing process. Every discovery and new idea shapes what comes next. Right now, we're working on the next generation of antennas for mobile communication and looking at how AI and the games industry can work together. It's an exciting time to be an engineer.

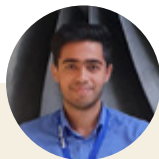
The programmes are updated regularly to be relevant to the modern world, the latest review has adjusted the programmes in the School of Engineering and Materials Science, to enhance the practical experiences and development of skills.

### Industrial experience

For most of our programmes, students may apply to study with an Industrial Experience option. The School has dedicated staff to assist with finding a placement. You'll have the opportunity to put your understanding of engineering into practice in a real-world environment, gaining invaluable experience for your future career. We also offer study with a Year Abroad, though please note this can't be combined with Industrial Experience.

### Where could engineering take you?

An engineering degree offers exciting career prospects, with engineering and manufacturing industries in the UK and across the world expected to expand even further over the next decade. Engineering graduates have high employability rates, with diverse and flexible career paths. Engineering can lead to roles including product design and manufacture, research and design, technology analysis, production or technical management, and in sectors including education, medicine, manufacturing, consulting, and government regulatory bodies.



#### Student's view

"As an international student, Queen Mary has been my home away from home. I've had a marvellous student experience through social and sports clubs, a truly international community of students and a great classroom environment with engaging activities delivered by one of the leading Russell Group universities. My course in Mechanical Engineering with Industrial Experience has taught me various aspects of engineering analysis, and design and practical applications. These have been thoroughly enjoyable and insightful, as I have learned from professors who are all experts in their respective engineering disciplines. The School of Engineering and Materials Science (SEMS) has also provided me with opportunities to grow as an individual, such as representing SEMS as a Student Ambassador. The Careers and Placement Advisors have guided me to develop interview skills and secure a year-long industrial placement at Rolls-Royce, where I worked as a Mechanical Engineering Intern and had incredible opportunities and learned immensely from industrial experts."

**Soham Deshpande, BEng Mechanical Engineering with Industrial Experience (4th year)**



#### Our alumni

"I studied on the BEng Aerospace Engineering course with a year in industry at GE Aviation. It turned out to be the start of my career with GE, as I was offered a full-time role in the GE90 operations leadership team at the end of my internship. I was later given the unique opportunity to join the XEOS team in Poland – a joint-venture engine maintenance business built by Lufthansa Technik and GE Aviation. Here I lead the component repair business and engine configuration department. Studying at Queen Mary resulted in so much more than just technical knowledge. The support I was given by the School career office and outreach team was outstanding. I enjoyed the chance to take part in a range of extracurricular activities including roles as a student ambassador and Engineering Society President, gaining skills that have been key to building a professional network in my career. Queen Mary is a shining example of the age-old saying 'you get out what you put in'. It's no exaggeration to say that the dedicated, passionate people there defined my career and provided the platform I needed to succeed in the aviation industry."

**Sam Baker, BEng Aerospace Engineering (2017)**

# English

**Long dedicated to the broadest and most inclusive vision of English studies, our Department of English spans cultures and periods, from the early modern to the contemporary.**

Grounded in London's East End, our research and teaching emphasises global perspectives and the relationship between literature and the wider world. We are a highly critically-engaged English department – like the students we teach – and our areas of specialism include postcolonial and world literature, gender studies, queer theory and new media, ranging across platforms from the manuscript to the book, and from the stage to the digital. In our modern and responsive English programme, you'll work alongside innovative and world-leading academics as you engage with and learn to analyse literature in its widest senses, developing their critical skills in the classroom and far beyond it.

Our English with Creative Writing programme offers a fantastic and diverse base in literature with a focus on the tools and skills needed to become a writer. The programme brings together literary history and theory from medieval literature through to contemporary and postcolonial writing, with creative writing elements designed to help you find your voice and develop successful writing techniques, whether prose, poetry or creative non-fiction. The programme is headed by established novelist Patrick Flanery.

## **What are we up to?**

Boris Johnson's take on Islam is "historically illiterate", according to Queen Mary's Professor of Renaissance Studies, Jerry Brotton. Writing in *The Guardian* last year, Professor Brotton reviewed Johnson's 2007 essay on the Islamic world and its perceived lack of development compared to the West. Johnson has made no secret of his belief that Islamic cultures may be incompatible with modern European ideas but, as Professor Brotton reported, Johnson's essay "reveals a level of historical ignorance shocking even for such a political opportunist."

Professor Brotton continues: "Johnson argues there is nothing like Michelangelo's Sistine Chapel in the Muslim world 'because it is beyond the technical accomplishment of Islamic art' and 'theologically offensive to Islam'. Wrong. He might like to know that scholars now believe Michelangelo took inspiration for designing St Peter's from the imperial mosques designed by the Ottoman architect

Visit [qmul.ac.uk/study/english](https://qmul.ac.uk/study/english)  
for more information



Sinan, who also influenced the other great Italian architect, Palladio.” Professor Brotton’s research revolves around the history of mapping and early modern global exchange, with particular reference to the European and Islamic worlds. His books have been translated into 20 languages worldwide, and his *A History of the World in Twelve Maps* was a New York Times bestseller.

### Joint programmes

English Literature is available in joint degree programmes with history, film studies, and linguistics. We also offer English Language and Linguistics. Students can combine their interests and approach two subjects in new ways by taking a joint degree, while challenging the ways they think about English.

### Where could English take you?

Our graduates go on to work in all sorts of sectors, including teaching, publishing, media and communications, marketing, law conversion courses, and arts and heritage. Some of our most well-known alumni include authors Sarah Waters, Caleb Femi and Gabriel Krauze, JG Ballard and Conn Iggylden, and TV comedy writer James Lamont. Recent graduates have been hired by Harper Collins, Historic Royal Palaces, The Independent, London and Partners, Penguin Random House and Shakespeare’s Globe.



#### Our alumni

“I enjoyed the level of opportunity in London. You can explore new things, visit museums and galleries and attend theatre shows relevant to your degree. And you can conduct work experience with big names in the city to really get ahead for after your degree. While I was at Queen Mary, I conducted work experience at LBC during the London Riots, and at BBC Science in the TV factual documentary-making department.

Studying a degree in English Literature makes me stand out from people who have studied journalism because it gives me a different yet applicable set of skills. For example, after analysing texts, and studying a psychoanalysis module, I can analyse information very quickly. This helps me sift through masses of information and numbers on the news desk so that I can filter through it and present the relevant information to audiences. English Literature gave me a foundation, and the opportunity, to follow my dreams.”

**Anila Chowdhry, BA English (2012)**



#### Our alumni

“I had heard great things about Queen Mary, and so that’s where I wanted to go.

In terms of favourite modules, I read *Wide Sargasso Sea* by Jean Rhys in my Postcolonial and Global Literature module - I was fuming! I’d been made to believe that Mr. Rochester was this great, brooding guy and I loved *Jane Eyre*, but nobody had thought to tell me that there was an alternative reading of this book.

Along with that, I did *Black Writing in Britain*, which again was very eye-opening. I remember realising there’s a lot we should know about literature, history and heritage, that is just not taught until university.

I went into publishing this year and these modules shaped my understanding of what I want to do in this industry. We struggled to get a lot of the books for *Writing South Africa* and *Postcolonial Studies* because they are very slowly coming out of print. It made me more conscious about the life of a book.”

**Ama Badu, BA English (2018)**

# Environmental Science



Visit [qmul.ac.uk/study/geography-and-environmental-science](https://qmul.ac.uk/study/geography-and-environmental-science) for more information

## In the face of climate change and rising pollution we urgently need to take action that will change the future of our world for the better.

Studying Environmental Science at Queen Mary equips you with the knowledge and skills necessary to shape the understanding and actions of policy makers, industry leaders, scientists, and the general public.

Our interdisciplinary programme draws on the expertise of the School of Geography and School of Biological and

Chemical Sciences to offer a truly distinctive degree. From climate change, environmental policy and conservation, to environmental engineering, ecology and evolution, our modules will develop your understanding of some of society's most pressing challenges.

State-of-the-art laboratories and our Field Suite enable us to undertake teaching and research in areas as diverse as pollutants concentration, river systems, greenhouse gases and the environment, and sediment and fossil analysis.

Crucially, you will study Environmental Science alongside researchers working at the forefront of their fields. Whether researching glaciers, river restoration, or environmental pollution, our academics bring their research into the classroom to ensure our students are studying at the cutting edge. Thanks to our local, national and international connections you can apply your knowledge to real-world problems, working with community groups, environmental trusts and charities, and NGOs committed to making positive change in the world.

Fieldwork plays a vital role in our Environmental Science programmes, taking you out of the classroom and into the world. Students take part in fieldwork in each year of their degree. Previous fieldwork destinations have included the Netherlands, Canada, Croatia and South Africa, as well as UK-based fieldwork, including opportunities right here in London.

We are the only London-based Russell Group university to offer Environmental Science, with an overall student satisfaction rate of 92% (NSS, 2019).

### What are we up to?

Dr Gemma Harvey and Dr Alex Henshaw, Senior Lecturers in Physical Geography, are developing a new research partnership with a pioneering lowland rewilding site in southern England. The research collaboration with Knepp Wildland provides opportunities for fieldwork and dissertation projects and explores key concepts and issues addressed by the programme including natural flood

management, environmental restoration and nature-based climate solutions.

Previously an intensive arable and dairy farm, since 2001 Knepp's land has been devoted to rewilding, with grazing animals used to drive habitat creation. The project aims to establish a functioning ecosystem where nature is given as much freedom as possible. The project is cited as an outstanding example of landscape restoration in the UK Government's 25 Year Environment Plan.

### Joint programmes

Our BSc Environmental Science with Business Management lets you add to your environmental science education with a focus on key business skills. Alongside modules on Earth surface science and ecology for example, you will take a range of business modules on economics for business, management, and many more.

### Where could Environmental Science take you?

A degree in Environmental Science provide a unique range of skills, including data collection, analysis, interpretation and evaluation of data, problem solving, project management, teamwork and communication. That means you have the opportunity to head into many diverse careers or to further study. Our graduates have gone on to work as environmental consultants, sustainability analysts, geomorphologists, and climate change analysts, or outside of the field of environmental science – including at Goldman Sachs, Arup Hong Kong, and the UK Cabinet Office.



#### Student's view

"Queen Mary wasn't originally my first choice but the Festival of Geography helped me change my mind. I saw passionate lecturers and got a taste of life at Queen Mary. Environmental Science combines social aspects of the environment with the underlying science of the human impact on the environment.

You get a sense of both a biologist and a geographer's perspective on the environment, which helps you develop your own thoughts and feelings towards the many environmental problems. The different modules available allow you to develop creative thinking and teamwork skills. We also developed our software skills during lab sessions. The programmes, such as GIS and SBSS, are commonly used in workplaces.

East London exposes you to many different cultures. It's always very vibrant, and you continuously discover new and hidden gems in every street corner. The food is also pretty good!"

**Shajeda Khanom, BSc Environmental Science (2020)**



#### Our alumni

"During my time at Queen Mary, I was able to develop my interests in key environmental matters including energy, climate change and environmental engineering. It was also the first time I was exposed to the importance of data in research through remote sensing, GIS, applied data analytics and various methodology classes. After graduating, I pursued a master's degree in Environmental Science with a specialisation in Energy Science at the University of Geneva. At that time, I became passionate about data science and completed a master's thesis that focused on building a detection framework using satellite imagery and deep learning to determine the installed capacity of solar panels on any territory. Upon graduating in 2019, I joined the Solar Impulse Foundation as their Data Analyst. My job focuses on building data pipelines from different platforms, analysing key metrics from our operations, automating various processes and extracting valuable insights for intelligence."

**Louis Gondy, BSc Environmental Science and Business Management (2017)**

# Film Studies

**Film studies demands creative, original thought. It asks you to question, for example, how class, race, ethnicity and sexuality are represented on the screen, and to think about the impact of changing technologies on film.**

It also introduces you, through practical modules, to the creative and technical skills required for scriptwriting, production managing, directing and editing, giving you a crucial insight into the fundamental aspects of filmmaking.

Based in the heart of the East End, close to the creative and media quarters in Hoxton, Shoreditch and Spitalfields, the Department houses facilities including a film production suite, two film studios with professional lighting grids, two edit suites and motion capture equipment.

London has an incredible concentration of talent, institutions, studios, sets and – of course – film history, and our location offers an important advantage. The City is home to the British Film Institute (BFI) and the London Film Festival and, with many film and television productions based here, you can gain valuable experience in a film-related part-time job or work placement alongside your studies.

We have close links with local communities and organisations, including regular collaboration with the East End Film Festival.

## **What are we up to?**

Film studies is a rigorous academic degree. You will graduate with an excellent knowledge base and a range of transferable skills, including analytical, research and communication. Our film staff have international profiles of research excellence and are regularly publishing field-defining books and taking part in events at the BFI, Barbican and Tate.

Our Autism through Cinema project within the Centre of Film and Ethics, supported by the Wellcome Trust, promotes an understanding of autism as a condition with benefits, seeking to deepen knowledge of neurodiverse experience through the optic of body language, its historical crafting in medical and commercial film, and its recreation in film form.

Visit [qmul.ac.uk/study/film-studies](https://qmul.ac.uk/study/film-studies) for more information



Our Film Cultures centre of research is a leading centre in the fields of film history, film cultures and national cinemas. Areas of expertise include the cultures and industries of British, French, Indian, Russian and US cinemas. A particular focus of the Film Cultures research group is star studies, especially in relation to questions of ageing and longevity.

### Joint programmes

Film studies' mixture of theory, practice, history and languages makes it a natural partner for several subjects. Students may choose to study it jointly with comparative literature, drama, English, French, German, Hispanic studies or Russian. Joint programmes involving a modern language include a required Year Abroad, though Film Studies with Comparative Literature, Drama or English is also available with a Year Abroad, as is Film Studies by itself.

### Where could film studies take you?

Film studies prepares you for a career in the creative arts, media, broadcasting or for continuing in academic study with our MA Film.

Recent graduates have found work as artistic directors, events programmers, dubbing coordinators, freelance short film producers, and post production runners, with companies including the British Film Council, Equinox Film and TV Production, Fixflo, SALT.TV and Freemantlemedia.

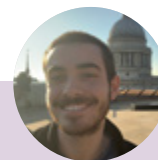


#### Our alumni

"Studying at Queen Mary permanently altered my approach to film, teaching me how to understand the cinema's complex visual language. It also made my own practice more meaningful by teaching me how to express my vision more effectively and clearly.

After graduating, I moved to Los Angeles, California, and continued to pursue my career in filmmaking. Since then, I have been a part of numerous film and theatre projects in many different roles, including cinematographer, script supervisor and screenwriter. But through my work, I found that my main passion lies in acting and directing. Last year, I co-created a sketch-comedy channel on YouTube called Broken English and have been given the opportunity to present at film festivals, most recently at the NYC Independent Film Festival. I also appeared as 'Young Red' on Netflix's Orange Is The New Black Season 5."

**Xenia Leblanc, BA Film Studies (2012)**



#### Student's view

"At Queen Mary, film studies is very diverse. You gain specific subject knowledge in order to hone your interests. This knowledge helps to mould you into a well-rounded film critic, through a wealth of both theoretical and production focuses.

Film studies gives you a chance to grow and test your understanding; I personally enjoy the course because we cover different styles of world cinema.

The course covers not only famous films, but also highlights many films not so highly acclaimed or regarded.

There are many opportunities to deepen and strengthen your knowledge which helps you to focus where to specialise as you progress through the course."

**Ed Wilkinson, BA Film Studies (2020)**

# Geography

Visit [qmul.ac.uk/study/geography-and-environmental-science](https://qmul.ac.uk/study/geography-and-environmental-science) for more information



**Geography's unique concern with how our social and physical environment interact puts it at the forefront of many pressing global challenges, including climate change, sustainable development, international migration, and global health.**

At Queen Mary, our range of programmes encompass both the human and physical aspects of Geography. Our degrees enable you to combine the study of physical or human geography, while focusing on either human or physical geography. Our BA Human Geography is one of the few specialist human geography degrees available in the UK. You'll benefit from working with academic staff whose research sits at the cutting edge of the discipline and who bring this expertise to the classroom. The School's main research areas – Culture, Space and Power; Economy, Development and Social Justice; Knowledge Interventions and Networks in Health, and Earth Surface Sciences - are mirrored in the modules we offer; whether in Year 2 (for example, Colonial Lives and Afterlives, Spaces of Uneven Development, Health, Space and Justice, or Future Coasts) or Year 3 (Geographies of Home, Contemporary India, The Public Life of Cities, or Volcanoes). We offer exceptional laboratory facilities and a range of exciting UK and overseas fieldwork opportunities in the Lake District, Liverpool, Rotterdam, Mumbai, New York and the Florida Everglades.

The School is very proud of having led on the research that underpinned the UK Living Wage Campaign and students have the opportunity to 'make a difference' themselves, continuing the Living Wage's legacy with their own research. Together, our commitment to progressive change and to a 'hands on' geographical education furnishes our students with a uniquely geographical way of seeing and understanding the world and a broad skill set that is highly sought after by employers.

## **What are we up to?**

Historic landfill sites across the country have been closed and largely forgotten – but what are the risks from contamination and pollution caused by the buried waste? Kate Spencer, Professor of Environmental Geochemistry, has been raising the issue and highlighting the danger posed by landfills. Her research shows how rubbish, including potentially dangerous materials, buried in Thurrock in the 1970s is now at risk of contaminating the Thames Estuary due to increasing site erosion.

The School of Geography's research focus on these sites puts us at the forefront of this important environmental issue. Professor Spencer's findings form a vital part of efforts to raise public awareness, study the levels of contamination, and form a national response. "We really need to understand what the risks are," Professor Spencer told the BBC. "We can appreciate that it looks horrible, but we really need to understand whether it's highly contaminated, whether it can get into the water, and whether it can go into the food chain."

### Joint programmes

We offer a joint programme with the School of Business Management. Our BSc Geography with Business Management lets you add to your geographical education with a focus on key business skills. Alongside modules on development, international migration, urbanisation, or global health, for example, you will take a range of business modules on economics for business, management, marketing, financial accounting and human resources. Students on the Geography with Business Management degree join our Geography students on both UK and overseas field classes.

### Where could geography take you?

Geography gives you a unique range of subject-specific and transferable skills, including data collection and analysis, the interpretation and evaluation of complex ideas and evidence, and individual and group project management.

These skills can be used in almost any career and are essential for graduates who choose further study or to change careers via professional conversion courses. Recent graduates have found work at Goldman Sachs, Arup Hong Kong, the UK Cabinet Office, CRISIS, Citizens UK, Kent Police, and many more.



### Student's view

"I chose to study at Queen Mary because of the diverse community and the feeling of inclusivity. I enjoy that as a BA student there is a variation of options of modules I'm allowed to choose from ranging from human to physical geography."

Additionally, I enjoy the variation within the modules and the context that is taught. Being a student in East London is great as you meet so many people from different backgrounds and it allows you to learn about new cultures and experiences."

**Jamie Mikhaela Sarao, BA Geography (2021)**



### Our alumni

"When picking my course, I didn't have a career in mind but I felt that geography would give me a broad range of skills and knowledge for a number of potential careers. Many graduate programmes are now more focused on the skills and experience you have as opposed to your actual degree which meant that my focus was on picking a course in a subject I really enjoyed."

In my final year, I started applying for graduate schemes early in September in industries that interested me. However, I was very determined on working in management or technology consulting."

I was the Marketing Officer for in the Geography Society which helped to demonstrate that I was a well-rounded candidate in my application. It's really important to show to employers that you are academic, sociable and have relevant experience – a pitfall for some is focusing purely on academic achievement!"

**Chippo Meke, BSc Geography with Business Management (2016)**

# History

## Build your degree around the areas of history that excite you most, with an exceptional choice of modules.

The School of History was founded in 1912 to teach history and undertake world-class research. More than a century later, we continue to welcome students and staff to work together to develop their expertise through an increasingly diverse range of historical periods, figures and outlooks. We offer an extraordinary range of modules, enabling students to pursue their passions while maintaining their curiosity. Historians in the School range widely in their chronological and geographical reach and the ways in which they study the past: from the birth of Islam to the lives of early modern nuns, via pirates in the Pacific; from African monarchs and American presidents to the architecture of London and the capital's depiction on film. This diversity underpins your ability to build a degree that suits you. As a result, our undergraduate historians are consistently among the most satisfied in the Russell Group, and the QS World University Rankings 2020 ranked us as one of the top 100 History Schools in the world. The diversity of ideas and experiences embodied in the School encourages all of us to understand

history from new perspectives and enable students and staff alike to achieve insights into the past that had been previously unthinkable.

### Where could history take you?

The broad range of skills acquired by studying history, coupled with extracurricular opportunities, enables you to find success in a diverse range of careers. History graduates can apply their knowledge directly to careers in museums, education or the arts and heritage sector. Other common sectors include publishing, journalism, policy, consumer and social research, management consulting and the Civil Service. Recent graduates have found work with the House of Commons, Imperial War Museum, Vodafone, PwC, and Bank of England.

### Joint programmes

Students can study history combined with English or politics. These subjects naturally inform your understanding of history and the focus through which students approach new topics. We also offer all our programmes with a Year Abroad option.

### What are we up to?

Many of our staff contribute to national and international cultural conversations, helping to shape the debates that animate society – whether through high-profile media appearances and the curation of exhibitions, or by working with public bodies and governmental agencies to promote the understanding and importance of history to our lives.

Visit [qmul.ac.uk/study/history](https://qmul.ac.uk/study/history)  
for more information



In recent years, the renowned cultural historian, Professor Amanda Vickery wrote and presented two prestigious BBC television series based on her research – The Story of Women and Art and Suffragettes Forever: The Story of Women and Power – highlighting the role of women in art and politics, and attracting a global audience. Dr Tom Asbridge wrote and presented a BBC Two documentary based on his bestselling biography of the celebrated medieval knight, William Marshal, drawing in millions of viewers and winning praise from the likes of The Guardian and The Times. In 2017, Tom also served as the historical consultant for a major exhibition commemorating Marshal's victory in the 1217 Battle of Lincoln.

With expertise in both the Troubles in Ireland and Islamist extremism, Dr Martyn Frampton is ideally qualified to comment on the nature of terrorism and government policy responses to this pressing issue. In 2016, Martyn led a project that produced the most extensive survey to date of British Muslim views across the UK, and, in 2017, he directed a major study into the scope and availability of extremist material online.

Working within Queen Mary's distinguished Centre for the History of the Emotions, Professor Thomas Dixon is currently leading a Wellcome Trust funded project that seeks to enrich public understanding of the nature of emotions and emotional health. This initiative includes educational outreach within primary and secondary schools and will culminate in an innovative exhibition in London's Royal College of Nursing.



### Student's view

"The large variety of history modules that Queen Mary offers was a main factor as to why I chose to study here. The campus environment makes the bustling city of London feel welcoming and accessible. I have really enjoyed my time here so far and have found many great friends who share similar interests to me through living in halls, my course and joining societies.

The staff are very approachable and have allocated hours each week dedicated to helping students in a one-on-one setting. The ability to utilise the resources that the city has to enhance my degree has made my time here very unique.

Completing an internship at a well-established historical house as part of my studies has provided me with ample skills for when I graduate. I am thankful for all the opportunities that Queen Mary has offered me and cannot wait to see what the future entails."

**Priya Bahi, BA History (2020)**

### Our alumni

"The town I grew up in and the school I went to really lacked diversity, so coming to Queen Mary and experiencing real multiculturalism and inclusivity was such a positive experience.

My journey to Queen Mary was slightly unconventional; in Sixth Form, everyone was talking about which university they wanted to attend whilst I had no idea. I knew I had a passion for history and that was what I wanted to study. I thought London wasn't the place for me, until a friend recommended Queen Mary.

After attending an Open Day I absolutely loved it so when I was offered a place, I didn't hesitate to accept. I'm a true historian at heart and studying at Queen Mary gave me access to new topics and inspiring individuals. I realised I had a particular passion for biographical history, and now I am working towards writing a biography.

Being such a broad subject, history can lead you into any career imaginable. It helps you develop skills from research, to analysis, to different forms of writing."

**Isabel Oveton, BA History (2016)**  
**Midweight Writer, Artful Dog**

# Law

Visit [qmul.ac.uk/study/law](https://qmul.ac.uk/study/law)  
for more information



## Ranked 29th in the world\*

**At Queen Mary's School of Law we are proud to have a vibrant, cosmopolitan and welcoming student community.**

We work closely with you to help you achieve your goals and aspirations by combining rigorous knowledge and practical skills. Our expert academics support you in reaching your full potential by helping you study and learn to practice law. This is enhanced by projects that will enable you to experience law in a professional context. Our award-winning Legal Advice Centre and George Hinde Moot Competition will give you the chance to put your knowledge into practice, while instilling the values of legal ethics at this early stage in your career.

We are one of the largest law schools in the UK, with more than 800 undergraduate students, high quality teaching and internationally renowned research, and we are one of the top 30 law schools in the world (QS World Rankings 2022).

### What are we up to?

Our research has a global reputation and is driven by demands for social justice. These activities range from undertaking innovative research with high profile NGOs such as Doctors Without Borders and Women's Aid, to informing reports of human rights abuses for the United Nations and monitoring the migrant rescue boats in the Mediterranean. This work is internationally renowned and transforms lives around the globe.

### Joint programmes

We offer two joint programmes: Law and Politics, and Law with Business. Law and Politics is designed for anyone pursuing a career that requires a solid understanding of both legal and governmental systems, and should especially appeal to students wanting to study public policy in its legal context. Law with Business gives you the opportunity to study the aspects of law and business

that interest you most, such as contract law, intellectual property and management of human resources. Students may also choose to study for a BSc Business with Law, as opposed to an LLB.

Our value added programmes offer students a chance to enrich their studies with practical skills. Law in Practice includes a third year paid internship. English and French Law is run jointly with Paris 1 Panthéon-Sorbonne University, and your third and fourth years are spent in Paris. English and European Law includes a year of studying abroad in a European country. Global Law includes a year studying abroad at one of our international partner universities.

### Where could law take you?

A Law LLB degree is highly regarded around the world and is a gateway to a wide variety of careers. There are many possible career paths available to law graduates, and our range of seven undergraduate law programmes develop valuable technical and transferable skills, including critical analysis and problem-solving.

Many of our graduates have progressed to qualify and practice as solicitors and barristers in England and Wales and also qualify and practice in law in other jurisdictions. Alumni from the School have also gone on to undertake roles in a broad range of professions, such as compliance and regulation careers, senior roles in the public sector, legal publishing, financial services, policy work, NGOs and charitable bodies.

### Our alumni

“In the years following my first degree I worked as a guitarist. At the same time, a part-time internship with legal action charity Reprieve led me to consider pursuing a career in law. I was attracted to the two-year LLB at Queen Mary as this gave more flexibility and independence than a one-year conversion, so I was able to fit in touring commitments around study. I was also drawn by the School of Law’s reputation for progressive and academically rigorous courses. A central part of my experience at Queen Mary was serving as a student advisor at the Queen Mary Legal Advice Centre (LAC), working on criminal defence and revenge pornography. After graduating, I studied for the Bar Professional Training Course, during which I was able to apply the conference and drafting skills I had developed during my time at the LAC as a tribunal representative for social security appellants. I currently work as Senior Legal Fellow with the law reform and human rights organisation JUSTICE, leading a project looking at reform of inquests and public inquiries.”

**Robbie, LLB Law (2016)**



### Student’s view

“Choosing to study law at Queen Mary was an easy decision. Not only do I enjoy the study environment and the campus-based lifestyle, but I find that the University creates a sense of belonging that is unrivalled. This sense of belonging not only enables you to produce the best work possible but pushes you to perform far beyond your perceived capabilities.

Law is not a subject that should be taken lightly, but in saying that, the university at which you choose to study Law plays an integral part in your understanding of the subject. With world-class teaching from the dedicated academic staff and fantastic facilities that you would expect when studying at a top Russell Group University, Queen Mary has nurtured my interest in law and has supported me throughout my studies.”

**Kashef, LLB (Hons) Law**



# Linguistics

## The Department of Linguistics at Queen Mary is one of the largest linguistics departments in the UK.

It is also exceptionally broad-based. Research and teaching cover all the major branches of linguistics: formal syntax and semantics, experimental linguistics, and sociolinguistics, including gender and media linguistics. You'll be taught by experts and leaders in their fields, seeing how linguistics applies to the real world.

We are a large and diverse department, and we welcome an equally diverse range of students. You might find yourself studying a little-known language such as Fijian with a native speaker, collecting data on changing London English on the streets of the East End, designing an experiment to measure phonological perception in bilingual children, or selecting features for a language of your own in a module on language construction. Students can opt to concentrate on Linguistics for a cross-language perspective; on English Language for a deeper dive into its history and varieties; or on English Language and Linguistics, the most flexible option.

Visit [qmul.ac.uk/study/linguistics](https://qmul.ac.uk/study/linguistics) for more information

Our department has hosted the Linguistics Society of Great Britain, UK Language Variation and Change, and the International Gender and Language Association, highlighting our partnerships and links to national and international institutions. London's position as an international crossroads, and its multilingual, multidialectal character, makes it an exciting and challenging place to study linguistics. Our location adds real benefits to students' fieldwork, with chances to see and hear the things you study put into practice on the streets. Students can conduct research projects of their own and receive career guidance throughout their degree.

### What are we up to?

People all over the world know about Cockney thanks to 'My Fair Lady'. Now, Multicultural London English (MLE) is the successor to Cockney as a popular dialect in East London, and sociolinguistics researchers at Queen Mary have been studying it together with community speakers for more than 15 years. Researchers including Professors David Adger, Jenny Cheshire and Dr Sue Fox have verified the existence of a new pronoun, man, new pronunciations and many other linguistic innovations that have emerged in multilingual areas of London. The research shows that MLE is different lexically, phonetically and syntactically from Cockney and other southern English dialects. In fact, it represents a new and continuously evolving system.

MLE is just one of a number of new dialects observable in cities that have become superdiverse. Professor Jenny



Cheshire has studied how MLE compares to multicultural Paris French, and one of our recent PhDs, Dr Nate Young, did his dissertation research on multicultural Stockholm Swedish.

In a project with the law department, Professor Devyani Sharma and Professor Erez Levon explored how accents, including MLE, continue to affect people's life chances for better or worse. Another recent PhD, Dr Christian Ilbury, researched ways in which MLE speakers use language creatively on social media. Queen Mary Linguistics staff have also helped educate teachers about MLE through seminars, blogs and published books and articles, and online materials.

### Joint programmes

Linguistics pairs naturally with the study of other languages and literature. Students may choose to study linguistics jointly with Comparative Literature, English Literature, French, German, Hispanic Studies or Russian. All Linguistics programmes offer the chance to study with a Year Abroad, however a required Year Abroad is involved with joint programmes and a modern language.

### Where could linguistics take you?

Because linguistics combines natural sciences, social sciences and humanities, our graduates are employed in many different sectors. Recent graduates have gone on to work in software, consulting, research, marketing, social media, translation and localisation, and journalism,

and for companies including BBC London, the Cabinet Office, Teach First, Embassy Language School, and RandomStorm. We have alumni in the private sector, government and NGOs, as well as a number who successfully pursue more strictly defined paths in teaching, training and healthcare.

### Our alumni

"I loved studying about communication and language across many different aspects – phonetics, phonology, sociolinguistics and morphology. I was particularly passionate about how language varies between genders and this was something I later chose to research in my final year. I always had a packed schedule and got to experience more than many of my friends who went to other universities. There are so many opportunities in London for work experience, this definitely helped me to prepare for 'real life' ahead of my graduation. In my current role, I am leading and motivating people on a daily basis as well as analysing performance. My degree has given me quantitative skills, the means to make insightful observations and ultimately be an excellent verbal communicator."

**Rachael Taylor, BA English Language and Linguistics (2015)**



### Student's view

"Ever since stepping foot into Queen Mary I have been involved with many new opportunities like being course representative, student ambassador, Unibuddy ambassador, book club writer and satire editor for student media, clearing hotline operator, mentor for the buddy scheme and volunteering officer. Queen Mary has prepared me for the future as I have been able to acquire many new skills. I love being at Queen Mary, especially as there's always a lot of support on offer for students. I have broadened my network and connections through getting involved with societies, volunteering and taking out time to simply help. I would not have been able to encounter this if I did not attend Queen Mary. Everyone is friendly and there are so many first points of contact if you have an issue or question, including your advisors, lecturers, ambassador, course representative or buddy/mentor. There is always someone there to clear your mind of any questions with efficient responses."

**Zoe Malik, BA English Language and Linguistics (2020)**

# Materials Science



Visit [qmul.ac.uk/study/materials-science](https://qmul.ac.uk/study/materials-science)  
for more information

**If you've ever wondered how a Formula One car can weigh so little, how the touchscreen on your mobile works, or what an artificial heart valve is made from, then studying a materials science subject could be for you.**

Materials science is the study of the structure, properties and behaviour of all materials, their development and their use in manufacturing. Our programmes combine aspects of chemistry, physics, design and engineering. We cover all materials: metals, ceramics, biomaterials, polymers and composites. Materials scientists develop new products and technologies that make our lives easier, more enjoyable, sustainable and safer – from the manufacture of renewable energy devices to innovative medical treatments and technology to overcome dental problems.

You will be taught by academics at the forefront of their field, with research feeding into your curriculum. Our programmes have recently been reviewed to provide the most modern and up to date requirements of industry and a wide range of careers. They are designed to build up practical experience and professional skills to enable you to research and solve real problems faced by various industries. The majority of our programmes are accredited by the Institute of Materials, Minerals and Mining (IOM3).

The School offers excellent on-campus resources, including a mechanical testing laboratory, NanoVision Centre, wet chemistry laboratory, maker space and computer modelling facilities. We have invested £30m in our labs, focused around dedicated teaching areas for our undergraduate materials students.

## **What are we up to?**

Dr Karin Hing's development of a synthetic bone graft made it into the six stamp set marking innovations in British engineering from the last 50 years. Dr Hing's stamp depicts a close-up of the synthetic bone graft with an example of where bone grafts are commonly used to support bone regeneration in orthopaedic surgery.

Her team at Queen Mary engineered materials that encourage bone growth when used in complex orthopaedic surgeries and have improved the outcomes for hundreds of thousands of patients worldwide. Dr Hing said: "It was a delightful surprise and a huge honour for my work

on synthetic bone grafts to be recognised with a stamp and to be part of a set which celebrates some incredible innovations in British engineering. I feel very fortunate that my research has gone on to have such a positive impact on people's lives, but this would not have been possible without multidisciplinary collaboration. Having our engineering of synthetic bone grafts celebrated on a stamp like the Marvel Comics and the Harry Potter books might even impress my kids."

### Industrial experience

For all our programmes, students may apply to study with an Industrial Experience option. The School has dedicated staff to assist with finding a placement. You'll have the opportunity to put your understanding of materials science into practice in a real-world environment, gaining invaluable experience for your future career. We also offer study with a Year Abroad, though please note this can't be combined with Industrial Experience.

### Where could materials science take you?

The materials industry is one of the world's biggest industrial sectors and continues to grow every year. Materials science graduates can work as metallurgists, research scientists, technical engineers, biomedical engineers, patent examiners, and in other professions linked to manufacturing and materials. Recent graduates have been hired by Aflex Hose Ltd, National Nuclear Laboratory, Jaguar Land Rover, Stone Foundries and more.



#### Student's view

"Queen Mary is one of the few universities that offers Materials degrees, so our specialisation means that we're taught by leaders in their fields. Everyone is extremely friendly and welcoming, to the point where lectures often feel like a discussion! The Materials department prioritises careers development; some lectures are spent discussing working in a STEM industry and giving us help on how to improve our employability prospects right from first year.

My interactions with my coursemates through our extensive group work and the people I've met from different backgrounds have made me grow as a person. Also, the opportunities that the variety of societies and groups provide means there's something for everyone. I feel like an education at Queen Mary is one that takes place across campus and from more people than just our lecturers, since I've discovered that everyone has something that we can learn."

**Serena Kumar Sabnani, MEng Materials Science and Engineering (3rd year)**



#### Student's view

"As I came through clearing, I was worried about how I'd settle in, but Queen Mary is such a wonderful, welcoming environment.

The campus is close to Central London, so you can make the most of being in the city. Materials Science and Engineering is a great course with friendly and helpful lecturers.

One of my favourite parts of the course is how the modules cover a wide range of materials, in detail, as well as key aspects of physics, chemistry and maths. You can also easily find out about different lecturers' research which is fascinating!

I've been able to make friends on my course easily through the lab work and group projects. I'm really happy I came to Queen Mary. I feel I'm in exactly right place for me!"

**Ella Aimee Kitching, BEng Materials Science and Engineering (2nd year)**



# Mathematical Sciences

## The School of Mathematical Sciences at Queen Mary is not your typical learning environment.

Joining our School means you'll be joining a diverse, international community of like-minded, intellectually curious students, who use both logic and creativity to solve the problems of the 21st century.

It's a supportive community too, working together to achieve goals, with our world-leading academics here to inspire you and the opportunity to experience our award-winning Mathematics Society.

Our flexible and wide range of abstract and real-world programmes means you can shape your own career path and join our esteemed alumni who have gone on to work in research, and for prestigious organisations such as Dyson, JP Morgan, PwC, KPMG and the Financial Conduct Authority.

We invest in our students, providing the perfect environment for them to thrive in, with one of the largest academic staff in the UK and our new £18 million Mathematics building with state-of-the-art facilities, teaching and study spaces.

Maths students at Queen Mary have the opportunity to undertake a Professional Placement year, during which you'll spend one year on a paid work placement within an organisation, supported by the University. In recent years, our students have secured placements at EY, Goldman Sachs and Renault.

We also offer the chance for students to gain valuable skills with an additional Year Abroad at one of our partner institutions. Current options include studying in Australia, Canada, France, Germany, Italy, Hong Kong, Malaysia, New Zealand, Singapore, South Korea and the USA.

### What are we up to?

As a Russell Group university we're engaged in ground-breaking, world-changing, mathematical research – including how malaria intervention programmes can improve life expectancy in Sub-Saharan Africa. Dr Jamie Griffin, Lecturer in Applied Probability, used his expertise in modelling malaria transmission and control to investigate whether the introduction of the RTS,S malaria vaccine should be prioritised over existing interventions across Sub-Saharan Africa. Malaria remains a leading cause of deaths worldwide, and effective measures to stop its spread are vitally important. Dr Griffin and his co-authors found that their models suggested vaccination should generally only be implemented once high coverage by existing measures had already been achieved. Having solid research backed by mathematical expertise means better-

Visit [qmul.ac.uk/study/mathematics](https://qmul.ac.uk/study/mathematics) for more information



informed policies can be put in place by organisations and charities fighting malaria around the world, and evidence-based decisions can help save lives. It's just one example of how mathematics at Queen Mary continues to change the world.

### Joint programmes

We offer joint programmes with both the School of Economics and Finance and the School of Business and Management. Studying a joint programme gives you the benefit of diverse academic and practical experience while bringing together complementary subjects. Our joint programmes include BSc Mathematics with Finance and Accounting, BSc Mathematics with Management and BSc Mathematics, Statistics and Financial Economics.

### Where could mathematical sciences take you?

You will have excellent career prospects with a BSc from Queen Mary. The latest data shows that 89 per cent\* of our School of Mathematical Sciences graduates are in work or further study within six months of graduation. The average starting salary for our graduates within six months of graduation is £24,000\*. In addition to postgraduate study and research, our graduates go on to work in a variety of roles, including financial investment analysts and advisors, chartered and certified accountants and business management professionals.

\*Source: Destination of Leavers from Higher Education Survey, 2016/17



#### Our alumni

"My time at Queen Mary was such a unique part of my life. I made amazing, inspiring friends. I was taught by lecturers who supported me. University teaches you so much, including technical knowledge, how to study, soft skills and more. But the most important thing you'll learn is about who you are and what you can achieve."

**Muhammed Ali Saleh, BSc Mathematics with Finance and Accounting (2017)**  
**Finance Business Analyst at Dyson**



"I spent four years at Queen Mary and loved every second of it. I learnt from some of the best academics in the field while living in one of the most vibrant cities in the world. I developed many new skills, from taking part in all-female coding courses to helping people move into accommodation. I even developed an idea for a sustainable, youth-driven business. Queen Mary was home for some of the most defining and exciting years of my life and I would do it all again in a heartbeat."

**Anna Galli, BSc Mathematics with Business Management (2019)**  
**Financial Modelling Analyst at KPMG UK**

# Medicine

Visit [qmul.ac.uk/study/medicine](https://qmul.ac.uk/study/medicine)  
for more information

## Studying medicine is about much more than just getting your MBBS degree and becoming a doctor.

Barts and The London School of Medicine and Dentistry at Queen Mary (Barts) brings together two venerable teaching institutions: St Bartholomew's Hospital, which dates back to 1123, and The London Hospital Medical College, founded in 1785, the oldest medical school in England and Wales. The hospitals lie in two very different parts of London, exposing you to a greater diversity of people and their health problems than at almost any other medical school in the UK. We now also offer the chance to study your MBBS degree in the Maltese islands, where our staff

and students are contributing to the development of the health service for the population of the region.

Medicine is a vocation and a way of life. It's about thinking of others and putting your patients first. You will be taught by experts in their field who are passionately engaged with their subject. Our programme places considerable emphasis on developing your expertise in a whole range of practical areas, including clinical, communication, observation, teamwork and management skills. We have also completely eliminated the traditional divide between preclinical studies and clinical years, which means that you will start seeing patients from your very first term. Our curriculum is taught through a series of modules that are based on body systems, which encompass various scientific and medical themes. Each body system is visited a minimum of three times during the programme.

Most students will have the opportunity to take an extra year of study leading to a Bachelor of Science (BSc) or

Master of Science (MSc) degree. An intercalated degree, taken after successful completion of years two, three or four will allow you to gain a greater insight into the natural or social sciences that underpin medicine and dentistry. You can choose from courses offering laboratory research experience or others providing specialised clinical and professional skills. An intercalated degree can give you a better understanding of your clinical studies, develop your interests in a particular field and broaden your career choices when you graduate.

One of the most interesting aspects of our MBBS programmes is your elective period in year five, which you will spend studying in the UK or abroad. The elective period is self-funded and its cost varies depending on the length and location of your elective.

We're proud that the 2020 National Student Survey ranked us first in London for student satisfaction.



## What are we up to?

Our students work side-by-side with world-leading research scientists and pioneers in public healthcare, helping to change the lives of people across the world.

During the Covid-19 pandemic, our staff and students volunteered on the frontline to support the NHS and in the Lighthouse Labs Network processing Covid-19 tests, and printed personal protective equipment to assist with urgent NHS requirements. Our researchers also identified the first drug, the steroid dexamethasone, to improve survival rates in certain coronavirus patients as part of a nationwide clinical trial, and have been actively developing new studies to identify who is most at risk of contracting and becoming seriously ill with the disease. In addition, Professor Charles Knight was chosen to lead the NHS Nightingale Hospital London.

Meanwhile, our world-leading medical research demonstrated for the first time that using artificial intelligence to instantly and accurately measure blood flow can help predict heart attacks and strokes. In our cancer research, clinical trials showed that an immunotherapy drug significantly improves survival in patients with advanced bladder cancer; breast screening women in their forties could save lives by reducing breast cancer mortality; and that screening entire populations for breast and ovarian cancer gene mutations could prevent millions more cancer cases across the world compared to current clinical practice. In collaboration with Bristol

Medical School, we also developed a training programme that teaches GPs how to identify domestic violence and abuse victims that led to a 30-fold increase in referrals.

## Fifth choice programmes

Did you know that you can apply to a fifth (non-medical) course as well as four medical courses via UCAS? You can also apply directly to our MBBS Medicine Malta degree in addition to your four UCAS options.

If you're looking for opportunities for your non-medicine UCAS fifth choice, the life sciences courses offered at Queen Mary could be the answer. Whether you aspire to solve medical or dental problems through the development of innovative technology and devices, become a laboratory scientist, or get involved in shaping healthcare policies, these programmes offer you exciting routes into careers that are shaping the future of global healthcare:

- Biochemistry BSc
- Biology BSc
- Biomedical Engineering BEng
- Biomedical Sciences BSc
- Chemistry BSc
- Genetics BSc
- Medical Genetics BSc
- Neuroscience BSc
- Pharmaceutical Chemistry BSc
- Pharmacology and Innovative Therapeutics BSc
- Psychology BSc
- Zoology BSc



## Our alumni

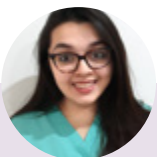
"I'm currently working as a junior doctor in one of London's hospitals as a Clinical Fellow in Dermatology. I see patients mainly in a clinic-based setting. I've always had an interest in science-related subjects and how the body works. Studying Medicine gives you the unique opportunity to use that knowledge to help others. I only realised how well medicine is taught at Queen Mary when I started working as a doctor. As a student, you're exposed to clinical situations from very early on, and where learning communication skills is a primary focus of teaching. In addition, the degree is taught in a way that develops your presentation, academic writing and teaching skills, giving you a significant advantage amongst peers when you start building your portfolio for future specialisation. Ultimately, studying medicine at Queen Mary makes you a well-rounded clinician and, therefore, a better doctor to your patients. I count myself as very lucky to have studied at Barts and The London. If the opportunity arises, I would come back in a teaching or mentoring capacity without hesitation."

**Pedram Kordrostami, MBBS Medicine (2016)**

# Medicine in London







### Student's view

"Over the years, I have really enjoyed meeting new students, both in my course and on the campuses, being taught by such friendly staff and having such a diverse community at the University. There are many things I like about my degree, but the one thing I love the most is how hands-on and clinical it is. Right at the start of first year we were already seeing patients in GP settings and this continued as we moved to hospital placements in years three to five. We also have many practical sessions in pre-clinical years for anatomy and physiology and even had the option to do a dissection on a human cadaver in our SSC modules.

I hope to use my degree and experiences to continue along the clinical pathway and eventually become a consultant, with some aspects of teaching future medical students. If you ever come to the Whitechapel campus, the one place you must visit before leaving is the library! The architecture of the church, the medical related stain glass windows and the peaceful atmosphere make it one of the top spots at Queen Mary."

**Raksha Jain, MBBS Medicine (4th year)**

The Royal London Hospital and City of London



### Studying in London

Our scientific excellence and the unmatched medical opportunities that come from being in London puts us in an unrivalled position to offer you the very best experience as a student, shaping the sort of doctor you will become. Studying in the capital means learning at the forefront of modern medicine. Our students get to experience all the challenges that come with providing healthcare in an incredibly busy and diverse city.

Situated next to The Royal London Hospital, the largest new hospital in Europe and home to London's Air Ambulance, Barts is perfectly located in Whitechapel. We also have a purpose-built Clinical and Communications Skills Centre at our West Smithfield campus (St Bartholomew's Hospital) for our medical students to practise clinical methods and practical skills using mannequins and models. The Centre is one of the most

advanced of its kind and the first to be developed in the UK, which means you can develop the key communication skills you'll need with the help of specially trained actors who simulate patients and are able to give valuable feedback.

You will develop your clinical skills through a variety of clinical attachments at The Royal London, Barts and Homerton hospitals, as well as further afield at hospitals in Greater London and Essex. Community general practice sessions are integrated into these hospital attachments, complementing your clinical skills teaching. This gives you useful practical experience within a diverse range of healthcare settings.



Medical practice

# Medicine in Malta



## Why study with us?

Our five-year programme offers you a curriculum and qualification identical to that taught at the Barts and The London School of Medicine and Dentistry at Queen Mary in London. That said, there are specific benefits when studying for a medical degree in Malta.

### London curriculum, Mediterranean lifestyle

The core curriculum of MBBS Malta is identical to Queen Mary's existing MBBS in London (A100). This includes early in-depth clinical experience, problem-based learning (PBL), practical sessions in laboratories, and opportunities to undertake an intercalated undergraduate science degree at Queen Mary's London campus. There is the possibility to undertake student selected components (SSCs) in London, too. As a student, you will take the same assessments at the same time as MBBS students in London.

On successful completion of the five-year programme, you will be awarded a Medicine MBBS from Queen Mary University of London (Barts and The London School of Medicine and Dentistry).

### Queen Mary academic staff

The programme in Malta is taught by academic staff based in Malta. A number of our academics have taught in London for years and have now moved to Malta where they are delivering the same programme. In addition,

we also have a growing number of academics who have worked elsewhere in the world and have specifically joined us in order to teach on the Malta course. As is true on the London course, local clinicians are also employed throughout the year to deliver clinical teaching.

### State-of-the-art campus and anatomy centre

Our state-of-the-art medical school is situated in Victoria, on the grounds of the Gozo General Hospital. Our facilities include a clinical simulation centre, communication skills suite, three large lecture theatres, two PC labs, seminar rooms, library, staff offices, a student common room, and a rooftop café.

### Small groups and personalised support

Students at Queen Mary Malta form a tightly knit community with a great sense of camaraderie. This is also reflected in the small study groups which make personalised support and close mentoring possible.

### Best place to study medicine

The Queen Mary Malta campus is situated on the island of Gozo, a 25-minute ferry ride from the main island, Malta. Gozo is well-known for its splendid beaches, walks, cultural events, tranquillity and safety. Just like Malta, it enjoys 300 days of sunshine per year, providing the perfect environmental base for studying. The cost of living is low compared to London, which means you can also enjoy a healthy study-leisure balance.

## Applying to study in Malta

You apply directly to Queen Mary for the MBBS Medicine in Malta via our website. This means you can apply to Malta in addition to your four UCAS medicine choices.

Details on our entry requirements and how to apply can be found here [qmul.ac.uk/malta/admissions](https://qmul.ac.uk/malta/admissions)



### Student's view

"Having the opportunity to study abroad and to be part of a new community in Malta is particularly exciting. The course structure stands out with its variety of teaching methods, including traditional lecture styled teaching, clinically based teaching, practicals and problem based learning.

The spiral curriculum and mixture of continuous assessment and end of year exams allows you to consolidate your learning and revisit themes and systems throughout the five years."

**Marie-Sophie Gomm, MBBS Malta (4th year)**

# Modern Languages and Culture

**Studying modern languages at Queen Mary means you'll immerse yourself in language and culture, studying literature, film, and even philosophy as much as grammar and translation.**

Our subject areas are French, German, Russian, Spanish, and Portuguese. You can study various single and combined honours degrees and, of course, the Year Abroad option brings the language to life and offers students a chance to immerse themselves in foreign culture. Our new three-language degree can include Catalan, Japanese, Mandarin or Modern Arabic alongside our main subject areas, and we also offer a pathway for students interested in teaching a language, either in the UK or abroad.

We have an incredibly diverse student body, and studying languages in East London offers fantastic opportunities to take advantage of cultural institutions and organisations. Our students rated us top in London for student

satisfaction in the 2018 National Student Survey (French and Iberian Studies) and our programmes focus on culture and identity alongside learning how languages themselves work.

## **Year Abroad**

The Year Abroad is a big part of what makes studying modern languages such an enriching experience. It is an opportunity for students to immerse themselves in a new culture, perfect their language skills by gaining near-native fluency and boost their job prospects. It also offers international experience and helps to develop transferable skills valued by employers, such as cross-cultural awareness, confidence, independence, adaptability, problem-solving and resilience.

We offer flexibility in what students can do during their Year Abroad. Students can choose to study at partner institutions, work as a Language Assistant with the British Council or complete a work placement in any industry (though please note students taking Russian are limited to study options due to visa restrictions). There is also the possibility to split the year between several countries and/or different types of placements.

Before your Year Abroad, you'll be able to meet one-on-one with our Year Abroad Development Manager to discuss options and work placements. We also run information meetings with employers and returning students who can share their experiences, and you'll have

Visit [qmul.ac.uk/study/modern-languages-and-cultures](https://qmul.ac.uk/study/modern-languages-and-cultures) for more information



access to our dedicated Year Abroad online hub. The Year Abroad is compulsory for all students on a BA in modern languages or for students with French, German, Russian, Portuguese and Hispanic studies in their degree title. Students are expected to complete assignments during the Year Abroad and these will count towards your final degree.

### What are we up to?

Strong connections with cultural and academic institutions around the world ensure our research remains cutting edge. This includes work on the representation of French culture through close collaboration with London institutions such as Tate Modern and l'Institut français. Our connections offer support for Catalan studies, which include The Institut Ramon Llull and the government of the Balearic Islands.

Support for the study of Anglo-German cultural relations comes from BASF and other German companies, while links with the British-German Chamber of Commerce provide attractive career options for students. Our long-standing Hispanic Medieval and Iberian and Latin American Research Seminar series provide opportunities for our Spanish students to expand their studies by hearing national and international speakers.

Queen Mary also holds the UK's largest collections of Lusophone Cinemas (Portuguese, Brazilian and Portuguese-Speaking African films) as well as conducting original research in Brazil's major social movements (the quilombola and the Theatre of the Oppressed).

### Joint programmes

French, German, Hispanic studies and Russian are all available as joint programmes with one of the following: comparative literature, film studies, linguistics and politics. You can also study a modern language with business management, with your time split 70/30 between the two.

### Where could modern languages and culture take you?

Language skills and cultural awareness can give you a real advantage in the job market and bring opportunities to work in other countries. The experience gained on your Year Abroad boosts your CV and helps languages students to stand out. Some of our students apply their degree knowledge directly, entering careers such as journalism, interpreting and teaching. Others transfer their communication, research and analytical skills into the arts, publishing, finance, business or IT. Recent graduates of modern languages at Queen Mary have been hired by Buenos Aires College, Condé Nast, Kea Consultants, League Managers Association, and Transport for London.

### Our alumni

"As soon as I graduated I got a job working with a multilingual recruiter, and then little by little found myself working where I currently am at a major UK charity that's championing mechanical engineers. I've been able to travel all across the UK as well as Europe. This year we did an event in Singapore. The biggest career highlight for me has been working on a project that we call Formula Student, and it helps young engineering students to design, build and race their own single seater race cars." **Chris Smout, BA German (2007)**



### Student's view

"I've been most impressed by how much help and assistance is offered at Queen Mary, from every angle, but particularly within the School of Languages, Linguistics and Film. The lecturers and tutors really care about students – in my four years at Queen Mary I have never had an email go ignored or unanswered and I usually had a response within the day for most of my modules! I think that exemplifies the sort of immediate and individual support available within the community. Studying languages at Queen Mary feels like you're more than a student number – you and your progress matters."

**Aleksandra Kneifel, BA Hispanic Studies and Drama (2019)**



# Physics and Astronomy

Visit [qmul.ac.uk/study/physics-and-astronomy](https://qmul.ac.uk/study/physics-and-astronomy) for more information

**Throughout its 100-year history, the School of Physics and Astronomy has brought people together to make world-changing discoveries.**

From trailblazing work on the structure of the atom, to the international collaboration jointly responsible for the Nobel Prize-winning discovery of the Higgs boson, our discoveries capture headlines and showcase the diversity of our expertise and the breadth of our collaborations.

We know that physics and astronomy are awe-inspiring subjects, and that access to great teachers and excellent resources enables our students to achieve great things. We also know that a degree in physics or astronomy is a fantastic start to a career, and that our graduates go on to an incredible range of meaningful and well-paid professions.

That's why our degrees combine the academic rigour of a Russell Group university, an enriching programme of careers and employability activities, and a friendly and supportive environment. All of our programmes are accredited by the Institute of Physics, which ensures consistently high academic standards.

This combination is rated highly by our students and for five years running, the School has been placed top in London for overall satisfaction in the National Student Survey (NSS 2014-18).

## What are we up to?

Queen Mary astronomer Dr Guillem Anglada-Escudé made it into Time magazine's list of the 100 most influential people after leading a team of scientists to discover a new planet orbiting our Solar System's nearest star. Using facilities operated by the European Southern Observatory and other telescopes, the research revealed a world with a similar mass to Earth orbiting around Proxima Centauri.

The planet, called Proxima b, orbits its parent star every 11 days and has a temperature suitable for liquid water to exist on its surface. The rocky world, a little larger than Earth, is the closest planet outside our Solar System. The discovery was quickly recognised as one of the most exciting in years and, as Anglada-Escudé explains: "Succeeding in the search for the nearest terrestrial planet beyond our Solar System has been an experience of a lifetime, and has drawn on the dedication and passion of a number of international researchers. We hope these

findings inspire future generations to keep looking beyond the stars. The search for life on Proxima b comes next.”

### Where could physics and astronomy take you?

The flexibility of the programme and ability to pick modules in line with your preferred specialism prepares you for careers in diverse fields of physics. Skills developed through studying physics – such as numeracy, data analysis, coding and problem solving – are also highly transferable into other sectors, including energy, business, marketing, engineering, technology, IT and finance. Many graduates also continue their studies with an MSc and PhD, often as a precursor to a career in research.

Recent graduates of the School of Physics and Astronomy have been employed by the UK Space Agency, JP Morgan Chase, European Astronaut Centre, Airbus and IBM.



#### Student's view

“As the first member of my family to go to university, I had initial doubts about going, but I felt welcomed into the inclusive campus community since the moment I arrived. I love all the opportunities available, from the hundreds of societies to get involved with to representing Queen Mary as a Student Ambassador. Two of the highlights of my time at Queen Mary were being able to attend a talk by Bill Gates at the University and, through the Physics and Astronomy Society (PsiStar), having the opportunity to visit the European Space Agency Research and Technology Centre in the Netherlands, which was very inspiring!”

**Ryan William Godden, MSci Physics with Astrophysics (3rd year)**



#### Our alumni

“I love and am fascinated by space, so for me it was a no-brainer to go into astrophysics. Since I graduated from Queen Mary, I went on to do a Masters degree in Sustainable Energy Futures, followed by an internship as an Energy Market Analyst at a grid-scale battery storage company. I am now a Graduate Project Engineer at Vattenfall Networks UK, and am part of two separate committees within the Energy Institute, which is the professional body for energy engineers.”

**María Sánchez-Pinilla, BSc Astrophysics (2017)**

# Politics and International Relations

**Politics and international relations is about power, identity, conflict and society, as well as the complex systems and organisations that govern the world.**

It's a subject that can lead to careers in government, education, media, business and more. At Queen Mary we exploit our London location to the full, inviting a range of high-profile speakers to the campus and organising regular events which give our students the chance to engage with Westminster, Whitehall and the third sector. Visiting speakers from think tanks, national political institutions, and party headquarters offer students amazing opportunities to benefit from the capital's role in the day-to-day of national and international politics.

Visit [qmul.ac.uk/study/politics-and-international-relations](https://qmul.ac.uk/study/politics-and-international-relations) for more information

Our flexible modular system means that, as well as benefiting from specialist teaching, you get the freedom as you move through your degree to shape your own programme of study, which can include the chance to work with a Member of Parliament\*. You'll be helped by your academic advisor along the way.

You'll also benefit from the public events of the Mile End Institute, based at Queen Mary. The Institute brings together politicians, policymakers, academics, students and the public to debate major issues and challenges facing the UK in the modern world.

## **What are we up to?**

Professor Sophie Harman, Professor of International Politics says: "I am interested in the politics as to why people die or get sick when they don't have to. You can't understand this without understanding the global politics that define which health issues matter, shape how people lead healthy lives, or turn a blind eye to people and issues on the margins of everyday politics. I started to explore this issue first by looking at the role of large international donor institutions such as the World Bank and one of the biggest global health issues of our time, HIV/AIDS, and have since explored the intricacies of global health governance, Ebola and the military, gender and women's health, and African agency in shaping global politics. Frustrated with the continued invisibility of people's lives in global health politics, I made a feature film to draw attention to women living with HIV/AIDS."

\*Available to students on BA Politics and BA Politics and International Relations.



## Joint programmes

Studying politics goes hand-in-hand with a number of subjects, and students are able to complement and refine their studies with programmes run jointly with the School of Economics and Finance, School of Modern Languages, School of Law, School of History, and School of Business and Management. Many of these programmes benefit from London's unique institutions and collections.

## Where could politics and international relations take you?

Our graduates go on to work or study in a wide variety of careers. Some apply their degree knowledge directly, entering sectors such as government, charities or lobbying and public affairs, while others work in policy research, campaigning, or the commercial arena.

Your time with us will equip you with all sorts of transferable skills that are valued by employers. Politics, after all, is all about logical and critical thinking, and making sense of complicated issues and relationships. Recent graduates have found jobs with the House of Commons, UK Home Office, Labour Party and PwC.

## Our alumni

"The School of Politics and International Relations is largely responsible for where I am in my career now. I was fortunate enough to be selected for a Parliamentary Placement as part of the final year on my degree. During this time, I interned for a Member of Parliament and soaked up everything I possibly could about the intricacies of working in Westminster. This opportunity gave me unique access to Parliament and enabled me to network with a variety of individuals and organisations.

I also applied for the QMentoring scheme, which is also partly responsible for where I am now. I was fortunate enough to be paired with a fantastic Senior Civil Servant who gave me the confidence to continue my career in Politics.

Queen Mary's Global Opportunities Office set the university apart from all the others I was considering. Not only did they have links to fantastic partner schools, but it maintained an inclusive narrative from the beginning, which to me set a precedent for all Queen Mary opportunities."

**Roberta Rhyse, BA Politics and International Relations (2019)**



## Student's view

"What I love about Queen Mary is the sociable atmosphere. It really helped me ease into university well and made it a better atmosphere to learn in.

I'm grateful for the professors and teachers in the School of Politics and International Relations who go above and beyond to create a space for students to be open and free, offering guidance when needed and pushing students to achieve better grades, which has really enhanced my learning experience.

Choosing my university was a really important decision because it was a journey I was undertaking on my own and choosing Queen Mary and also choosing International Relations is a decision I will always be happy with. It has contributed to shaping me into the person I have become today, making me more confident and outspoken."

**Samya Tazmin, BA International Relations (2020)**

# Psychology



Visit [qmul.ac.uk/study/psychology](https://qmul.ac.uk/study/psychology)  
for more information

## Psychology at Queen Mary is taught as part of the School of Biological and Chemical Sciences.

We treat the topic as a natural and experimental science, whether you approach it from the perspective of psychology (perception, cognition, communication and social life) or neuroscience (anatomy, physiology, biochemistry, genetics and pharmacology). You'll learn about cognitive, social, developmental and abnormal psychology and then apply this knowledge in topics such as counselling and health psychology. You'll also explore the origins of the human mind and behaviour, drawing on animal cognition, neuroscience and behavioural genetics and epigenetics. Our psychology programme

is accredited by the British Psychological Society, meaning our graduates are eligible for Graduate Basis for Chartered Membership (GBC) – an entry requirement for the postgraduate and training programmes that lead to becoming a fully Chartered Psychologist.

The School's approach to psychology is based on the simple observation that the brain, the seat of human and animal minds and behaviour, has evolved and so must reflect facets of biological processes. This emphasis on the biological and neuroscientific perspective differs from many other Psychology degrees, which are often based within social science departments. Our degree prepares you for further study and careers in both the biological/medical sciences and the social sciences and humanities.

The option of studying on the BSc Psychology with Professional Experience degree allows you to spend a year working in a professional experience position as part of your degree. As well as helping you to stand out from

the crowd and secure graduate employment, professional experience is an excellent opportunity to develop real world skills and put your learning into context.

### What are we up to?

Researchers at Queen Mary University of London have shown that zebrafish can provide genetic clues to smoking, a complex human behaviour. By studying genetically altered zebrafish they were able to pinpoint a human gene, *Slit3*, involved in nicotine addiction and discover the ways in which it may act.

While zebrafish have been used extensively in genetic research, they've been used only in developmental models, such as identifying genes associated with disease, rather than to predict genes involved in a complex cognitive behaviour such as smoking. Although smoking has long been known to have a genetic element, relatively little has been known about the genes involved since it has been difficult to identify them from human studies alone.

Caroline Brennan, Professor of Molecular Genetics at Queen Mary University of London, led the research. She explained: “As well as finding out more about the genes involved in nicotine addiction, most importantly, we’ve found an easier way of finding these genes in the future.”

### Where could psychology take you?

Many of our psychology graduates pursue a career in clinical psychology, teaching, counselling or working in research. Others transfer their skills into sectors such as marketing, HR, finance or technology. Psychology is a useful basis for a wide range of careers, as it has a big impact on all areas of life, from education and health to the economy and crime. Our degree prepares you for further study and careers in both the biological/medical sciences and the social sciences and humanities. Recent employers include Barts Health NHS Trust, Burgess Autistic Institute, African Health Policy Clinic and Easy Steps ABA Services for Autism\*.



\*Source: Last five years Queen Mary SBSCS alumni database

### Student's view

“My course has given me the opportunity to study a blend of science and social science. I’ve developed research, numeracy and critical analysis skills that have helped me grow as a student.

I’ve enjoyed many of my modules, however a few that stand out to me are Physiology, Developmental Psychopathology and Health Psychology.

These courses all have some element of healthcare, biological or mental health, and wellbeing integrated within the syllabus which I truly enjoy learning about.

The highlight of my degree at Queen Mary has been completing my year abroad at Boston College in the United States. That experience helped me evolve as a student and individual.

While it is sometimes challenging it has still been one of the most memorable experiences of my life.”

**Neha Shanbhag, BSc Psychology (2020)**



### Our alumni

“Psychology’s versatility and broad nature as a discipline means it opens more doors than most people think. I chose Queen Mary because of its Russell Group University status and its unique and fantastic employment and work placement programs. I remember reading about Queen Mary’s employability initiatives such as QConsult and QChallenge. These programs help you get a taste of the working world and how you can utilise these experiences to secure top-level jobs.

I took part in QChallenge, which I remember fondly to this day. I reap the benefits of that initiative through the network I built, the transferable skills I learnt and how it provided me with a differentiating factor to other graduate scheme applicants. Looking back, only now do I start to comprehend how much of an influence Queen Mary has had on not only my career and development, but also on my professional self.”

**Zeeshan Nazar, BSc Psychology (2019)  
Commercial Management Graduate for BT**



## **Kate's student experience got off to a rocky beginning.**

She started her History degree at a different university, but due to ongoing health problems, she transferred to Queen Mary to be closer to home. After falling ill again, she had to begin her second year from hospital.

Faced with these setbacks, Kate questioned whether university was right for her. However, with the support and encouragement of Queen Mary's Disability and Dyslexia Service, she was able to persevere – they liaised with her lecturers, who had her textbooks prepared for collection from the library and made other adjustments to help her stay on top of her studies.

Once she joined in person, Queen Mary's sense of community made Kate feel at home: "People actually knew me on campus, and I got lovely messages of support." She joined Queen Mary's student radio station and decided to apply for a master's in broadcast journalism. "The careers service supported me every step of the way," she says, "from reading my cover letters to helping me figure out where to apply."

Kate's resilience paid off – she's accepted a place on her chosen master's course and aspires to host her own show on national radio. Looking back, she's glad she stayed and made use of the support available to her: "Queen Mary has shown that I have the ability to succeed, whatever life throws at me."







# Our courses by subject

Find the programme you're interested in below to see important information including A Level and International Baccalaureate requirements, course length and the UCAS Course Code, which you'll need when you apply.

You'll find more details about individual programmes on our subject websites:  
[qmul.ac.uk/study](https://qmul.ac.uk/study)

**Course listing key:**  
International Baccalaureate Requirements: HL = Higher Level, SL = Standard Level  
English Language Requirements: W = Writing, R = Reading, L = Listening, S = Speaking

Subject / Programme	Award	UCAS Course Code	Type	Duration <sup>1</sup>	URL	Foundation	Year Abroad	Year with Industrial Experience/ Professional Placement	Entry Month		A Level Requirements <sup>2</sup>	International Baccalaureate Requirements	GCSE Requirements	English Language Requirements
Biological and Biomedical Sciences														
Biology	BSc (Hons)	C100	Single	3	qmul.ac.uk/C100			C10Y	September		ABB including Biology	34 points overall, 655 at HL including Biology	5 GCSE passes, English and Maths at C/4	6.5 overall, 6.0 in W, 5.5 in R,L,S
Biomedical Sciences	BSc (Hons)	B990	Single	3	qmul.ac.uk/B990			B99Y	September		AAB including Biology. A second science subject of Chemistry, Maths, Further Maths, Physics or Psychology is also required.	35 points overall, 665 at HL including Biology. A second science subject at Higher Level of Chemistry, Maths, Further Maths, Physics or Psychology is also required.	5 GCSE passes, English and Maths at C/4	6.5 overall, 6.0 in W, 5.5 in R,L,S
Medical Genetics	BSc (Hons)	C431	Single	3	qmul.ac.uk/C431			C43Y	September		ABB including Biology	34 points overall, 655 at HL including Biology	5 GCSE passes, English and Maths at C/4	6.5 overall, 6.0 in W, 5.5 in R,L,S
Neuroscience	BSc (Hons)	B140	Single	3	qmul.ac.uk/B140			B14Y	September		ABB including Biology or Chemistry. A second science subject, of Biology, Chemistry, Maths or Physics is also required.	34 points overall, 655 at HL including Biology and Chemistry	5 GCSE passes, English and Maths at C/4	6.5 overall, 6.0 in W, 5.5 in R,L,S
Pharmacology and Innovative Therapeutics	BSc (Hons)	B211	Single	3	qmul.ac.uk/B211			B21Y	September	B2Y1	ABB including Biology or Chemistry. A second science subject, of Biology, Chemistry, Maths or Physics is also required.	34 points overall, 655 at HL including Biology and Chemistry	5 GCSE passes, English and Maths at C/4	6.5 overall, 6.0 in W, 5.5 in R,L,S
Zoology	BSc (Hons)	C300	Single	3	qmul.ac.uk/C300			C30Y	September		ABB including Biology	34 points overall, 655 at HL including Biology	5 GCSE passes, English and Maths at C/4	6.5 overall, 6.0 in W, 5.5 in R,L,S
Business and Management														
Accounting and Finance	BSc (Hons)	N400	Single	3	qmul.ac.uk/N400	N401			September		AAA	36 points, 666 at HL, including 4 in SL Mathematics	5 GCSE passes, English at C/4 and Maths at A/7	6.5 overall, 5.5 in all components
Accounting and Management	BSc (Hons)	4P20	Single	3	qmul.ac.uk/4P20	4P21			September		AAA	36 points, 666 at HL, including 4 in SL Mathematics	5 GCSE passes, English and Maths at C/4	6.5 overall, 5.5 in all components
Business Management	BSc (Hons)	NN12	Single	3	qmul.ac.uk/NN12	NN13			September		AAA	36 points, 666 at HL, including 4 in SL Mathematics	5 GCSE passes, English and Maths at C/4	6.5 overall, 5.5 in all components
Business Management (Social Change)	BSc (Hons) / Degree Apprenticeship	NN14	Single	4	qmul.ac.uk/NN14				September		AAA	36 points, 666 at HL, including 4 in SL Mathematics	5 GCSE passes, English and Maths at B/5	
Business Management with Chinese and Year Abroad	BSc (Hons)	N123	Major / Minor	4	qmul.ac.uk/N123		Yes		September		AAA	36 points, 666 at HL, including 4 in SL Mathematics	5 GCSE passes, English and Maths at grade C/4	6.5 overall, 5.5 in all components
Business with Law	BSc (Hons)	NM11	Major / Minor	3	qmul.ac.uk/NM11				September		AAA	36 points, 666 at HL, including 4 in SL Mathematics	5 GCSE passes, English and Maths at C/4	6.5 overall, 5.5 in all components

Subject / Programme	Award	UCAS Course Code	Type	Duration <sup>1</sup>	URL	Foundation	Year Abroad	Year with Industrial Experience/ Professional Placement	Entry Month		A Level Requirements <sup>2</sup>	International Baccalaureate Requirements	GCSE Requirements	English Language Requirements
Business and Management														
International Business with Year Abroad*	BSc (Hons)	N120	Single	4	qmul.ac.uk/N120	N121	Yes		September		AAA	36 points, 666 at HL, including 4 in SL Mathematics	5 GCSE passes, English at C/4 and Maths at A/7	6.5 overall, 5.5 in all components
Marketing and Management	BSc (Hons)	4G44	Single	3	qmul.ac.uk/4G44	4G45			September		AAA	36 points, 666 at HL, including 4 in SL Mathematics	5 GCSE passes, English and Maths at C/4	6.5 overall, 5.5 in all components
Chemical Sciences														
Biochemistry	BSc (Hons)	C700	Single	3	qmul.ac.uk/C700			C70Y	September		3W45	34-35 points, 665-655 at HL including Chemistry	5 GCSE passes, English and Maths at C/4	6.5 overall, 6.0 in W, 5.5 in R,L,S
Biochemistry	MSci (Hons)	C701	Single	4	qmul.ac.uk/C701			C71Y	September			35 points overall, 665 at HL including Chemistry	5 GCSE passes, English and Maths at C/4	6.5 overall, 6.0 in W, 5.5 in R,L,S
Chemistry	MSci (Hons)	F103	Single	4	qmul.ac.uk/F100			F13Y	September			35 points overall, 665 at HL including Chemistry	5 GCSE passes, English and Maths at C/4	6.5 overall, 6.0 in W, 5.5 in R,L,S
Chemistry	BSc (Hons)	F100	Single	3	qmul.ac.uk/F103			F10Y	September		9A32	34-35 points overall, 665-655 at HL including Chemistry	5 GCSE passes, English and Maths at C/4	6.5 overall, 6.0 in W, 5.5 in R,L,S
Pharmaceutical Chemistry	MSci (Hons)	F152	Single	4	qmul.ac.uk/F154			F12Y	September			35 points overall, 665 at HL including Chemistry	5 GCSE passes, English and Maths at C/4	6.5 overall, 6.0 in W, 5.5 in R,L,S
Pharmaceutical Chemistry	BSc (Hons)	F154	Single	3	qmul.ac.uk/F152			F15Y	September		2L22	34-35 points, 665-655 at HL including Chemistry	5 GCSE passes, English and Maths at C/4	6.5 overall, 6.0 in W, 5.5 in R,L,S
Comparative Literature														
Comparative Literature	BA (Hons)	Q200	Single	3	qmul.ac.uk/Q200	TTX1		Q201	September			30 points, 555 at HL including an essay based humanities or social sciences subject	5 GCSE passes, English at C/4	7.0 overall, 7.0 in W, 5.5 in R,L,S
Comparative Literature and Film Studies	BA (Hons)	QP23	Joint	3	qmul.ac.uk/QP23			QP2Y	September			32 points, 655 at HL including an essay based humanities or social sciences subject	5 GCSE passes, English at C/4	7.0 overall, 7.0 in W, 5.5 in R,L,S
Comparative Literature and Linguistics	BA (Hons)	QQ21	Joint	3	qmul.ac.uk/QQ21			QQ2Y	September			32 points, 655 at HL including an essay based humanities or social sciences subject	5 GCSE passes, English at C/4	7.0 overall, 7.0 in W, 5.5 in R,L,S
Computer Science														
Computer Science	BSc (Hons)	G400	Single	3	qmul.ac.uk/G400			G40Y	September			34 points, 665 at HL. Alternatively, 32 points overall, 655 at HL including Mathematics or Computer Science.	5 GCSE passes, English at C/4 and Maths at B/5	6.0 overall, 5.5 in all components
Computer Science	MSci (Hons)	G401	Single	4	qmul.ac.uk/G401			G41Y	September			36 points, 666 at HL. Alternatively, 34 points overall, 665 at HL including Mathematics or Computer Science.	5 GCSE passes, English at C/4 and Maths at B/5	6.0 overall, 5.5 in all components
Computer Science and Mathematics	BSc (Hons)	GG41	Joint	3	qmul.ac.uk/GG41			GG4Y	September		IG41	34 points, 665 at HL including Mathematics	5 GCSE passes, English at C/4 and Maths at B/5	6.0 overall, 5.5 in all components
Computer Science with Management (ITMB)	BSc (Hons)	I9N1	Major / Minor	3	qmul.ac.uk/I9N1			I9N2	September		I9NY	34 points, 665 at HL. Alternatively, 32 points overall, 655 at HL including Mathematics or Computer Science.	5 GCSE passes, English at C/4 and Maths at B/5	6.0 overall, 5.5 in all components
Creative Computing	BSc (Eng) (Hons)	I152	Single	3	qmul.ac.uk/I152			I12Y	September		I153	34 points, 665 at HL. Alternatively, 32 points overall 6,5,5 at HL including Mathematics or Computer Science.	5 GCSE passes, English at C/4 and Maths at B/5	6.0 overall, 5.5 in all components
Digital and Technology Solutions (Software Engineer)	BSc (Hons) / Degree Apprenticeship	G4DE	Single	4	qmul.ac.uk/G4DE	Yes			September			30 points, 555 at HL including Mathematics or Computer Science	Mathematics at B/5	6.0 overall, 5.5 in all components

Subject / Programme	Award	UCAS Course Code	Type	Duration <sup>1</sup>	URL	Foundation	Year Abroad	Year with Industrial Experience/ Professional Placement	Entry Month		A Level Requirements <sup>2</sup>	International Baccalaureate Requirements	GCSE Requirements	English Language Requirements
Dentistry														
Dentistry	BDS	A200	Single	5	qmul.ac.uk/A200				September		A*AA including Biology or Chemistry, and a second science from Biology, Chemistry, Physics or Mathematics. Results must be achieved in one sitting over a period of no longer than two years.	38 points, 666 at HL including Biology or Chemistry, and a second science or Mathematics	AAABBB or 777666 (or above), in any order, to include Biology (or Human Biology), Chemistry, English Language, and Mathematics (or Additional Mathematics or Statistics). The Science Double Award may substitute all sciences at GCSE.	7.0 overall, 6.5 in W, 5.5 in R,L,S
Oral Health	BSc (Hons)	A910	Single	3	qmul.ac.uk/A910				September		ABB including Biology	32 points, 655 at HL including Biology	6 GCSE passes at C/4 including English, Maths, Biology and Chemistry. The Science Double Award may substitute all sciences at GCSE.	7.0 overall, 6.5 in W, 5.5 in R,L,S
Drama														
Drama	BA (Hons)	W400	Single	3	qmul.ac.uk/W400	WWX1	W401		September		BBB including at least one arts, humanities or social sciences subject	30 points, 555 at HL including at least one arts, humanities or social sciences subject	5 GCSE passes, English at C/4	7.0 overall, 6.5 in W, 5.5 in R,L,S
Economics and Finance														
Economics	BSc (Econ) (Hons)	L100	Single	3	qmul.ac.uk/L100		L10Y		September		AAA including Mathematics. Excludes Use of Mathematics.	36 points, 666 at HL, including 6 in SL Mathematics, if not being studied at HL. Excludes Maths Studies.	5 GCSE passes, English and Maths at B/5	6.5 overall, 6.0 in W, 5.5 in R,L,S
Economics with Integrated Foundation Year	BSc (Econ) (Hons)	L10F	Single	4	qmul.ac.uk/L10G	Yes	L10X		September		For full details of the entry requirements, please visit qmul.ac.uk/L10G			6.0 overall, 5.5 in all components
Economics with Integrated Foundation Year	BSc (Econ) (Hons)	L10G	Single	4	qmul.ac.uk/L10F	Yes	L10Z		January		For full details of the entry requirements, please visit qmul.ac.uk/L10F			6.0 overall, 5.5 in all components
Economics and Finance	BSc (Econ) (Hons)	LN13	Joint	3	qmul.ac.uk/LN13		LN3Y	L1N3	September		AAA including Mathematics. Excludes Use of Mathematics.	36 points, 666 at HL, including 6 in SL Mathematics, if not being studied at HL. Excludes Maths Studies.	5 GCSE passes, English and Maths at B/5	6.5 overall, 6.0 in W, 5.5 in R,L,S
Economics and Finance with Integrated Foundation Year	BSc (Econ) (Hons)	LN3F	Joint	4	qmul.ac.uk/LN3F	Yes	LN3X	L1N4	September		For full details of the entry requirements, please visit qmul.ac.uk/LN3F			6.0 overall, 5.5 in all components
Economics and Finance with Integrated Foundation Year	BSc (Econ) (Hons)	LN3G	Joint	4	qmul.ac.uk/LN3G	Yes	LN3Z	L1N5	January		For full details of the entry requirements, please visit qmul.ac.uk/LN3G			6.0 overall, 5.5 in all components
Economics and International Finance	BSc (Econ) (Hons)	L13N	Joint	3	qmul.ac.uk/L13N		L1NY		September		AAA including Mathematics. Excludes Use of Mathematics.	36 points, 666 at HL, including 6 in SL Mathematics, if not being studied at HL. Excludes Maths Studies.	5 GCSE passes, English and Maths at B/5	6.5 overall, 6.0 in W, 5.5 in R,L,S
Economics and International Finance with Integrated Foundation Year	BSc (Econ) (Hons)	L1NF	Joint	4	qmul.ac.uk/L1NF	Yes	L1NX		September		For full details of the entry requirements, please visit qmul.ac.uk/L1NF			6.5 overall, 6.0 in W, 5.5 in R, L, S
Economics and International Finance with Integrated Foundation Year	BSc (Econ) (Hons)	L1NG	Joint	4	qmul.ac.uk/L1NG	Yes	L1NZ		January		For full details of the entry requirements, please visit qmul.ac.uk/L1NG			6.0 overall, 5.5 in all components
Economics and International Relations	BSc (Hons)	L2L1	Joint	3	qmul.ac.uk/L2L1		L2LY		September		AAA including Mathematics	36 points, 666 at HL. This must include a minimum of 6 in SL Mathematics, if not being studied at HL. Excludes Maths Studies.	5 GCSE passes, English and Maths at B/5	7.0 overall, 6.5 in W, 5.5 in R,L,S
Economics and International Relations with Integrated Foundation Year	BSc (Hons)	L2LF	Joint	4	qmul.ac.uk/L2LF	Yes	L2LX		September		For full details of the entry requirements, please visit qmul.ac.uk/L2LF			6.0 overall, 5.5 in all components
Economics and International Relations with Integrated Foundation Year	BSc (Hons)	L2LJ	Joint	4	qmul.ac.uk/L2LJ	Yes	L2LW		January		For full details of the entry requirements, please visit qmul.ac.uk/L2LJ			6.0 overall, 5.5 in all components
Economics and Politics	BSc (Econ) (Hons)	LL12	Joint	3	qmul.ac.uk/LL12		LL2Y		September		AAA including Mathematics. Excludes Use of Mathematics.	36 points, 666 at HL, including 6 in SL Mathematics, if not being studied at HL. Excludes Maths Studies.	5 GCSE passes, English and Maths at B/5	7.0 overall, 6.0 in W, 5.5 in R,L,S



Subject / Programme	Award	UCAS Course Code	Type	Duration <sup>1</sup>	URL	Foundation	Year Abroad	Year with Industrial Experience/ Professional Placement	Entry Month		A Level Requirements <sup>2</sup>	International Baccalaureate Requirements	GCSE Requirements	English Language Requirements
Economics and Finance														
Economics and Politics with Integrated Foundation Year	BSc (Econ) (Hons)	LL2G	Joint	4	qmul.ac.uk/LL2G	Yes	LL2Z		January		For full details of the entry requirements, please visit qmul.ac.uk/LL2G			6.0 overall, 5.5 in all components
Economics and Politics with Integrated Foundation Year	BSc (Econ) (Hons)	LL2F	Joint	4	qmul.ac.uk/LL2F	Yes	LL2X		September		For full details of the entry requirements, please visit qmul.ac.uk/LL2F			6.0 overall, 5.5 in all components
Economics, Finance and Management	BSc (Econ) (Hons)	LN12	Major / Minor	3	qmul.ac.uk/LN12		LN2Y		September		AAA including Mathematics. Excludes Use of Mathematics.	36 points, 666 at HL, including 6 in SL Mathematics, if not being studied at HL. Excludes Maths Studies.	5 GCSE passes, English and Maths at B/5	6.5 overall, 6.0 in W, 5.5 in R,L,S
Economics, Finance and Management with Integrated Foundation Year	BSc (Econ) (Hons)	LN2F	Major / Minor	4	qmul.ac.uk/LN2F	Yes	LN2X		September		For full details of the entry requirements, please visit qmul.ac.uk/LN2F			6.0 overall, 5.5 in all components
Economics, Finance and Management with Integrated Foundation Year	BSc (Econ) (Hons)	LN2G	Major / Minor	4	qmul.ac.uk/LN2G	Yes	LN2Z		January		For full details of the entry requirements, please visit qmul.ac.uk/LN2G			6.0 overall, 5.5 in all components
Economics, Statistics and Mathematics	BSc (Econ) (Hons)	LG11	Joint	3	qmul.ac.uk/LG11		LG1Y		September		AAA including Mathematics. Excludes Use of Mathematics.	36 points, 666 at HL, including 6 in SL Mathematics, if not being studied at HL. Excludes Maths Studies.	5 GCSE passes, English and Maths at B/5	6.5 overall, 6.0 in W, 5.5 in R,L,S
Economics, Statistics and Mathematics with Integrated Foundation Year	BSc (Econ) (Hons)	LG1G	Joint	4	qmul.ac.uk/LG1G	Yes	LG1Z		January		For full details of the entry requirements, please visit qmul.ac.uk/LG1G			6.0 overall, 5.5 in all components
Economics, Statistics and Mathematics with Integrated Foundation Year	BSc (Econ) (Hons)	LG1F	Joint	4	qmul.ac.uk/LG1F	Yes	LG1X		September		For full details of the entry requirements, please visit qmul.ac.uk/LG1F			6.0 overall, 5.5 in all components
Finance	BSc (Econ) (Hons)	L10D	Single	3	qmul.ac.uk/L10D		L10C	L10B	September		AAA including Mathematics. Excludes Use of Mathematics.	36 points, 666 at HL, including 6 in SL Mathematics, if not being studied at HL. Excludes Maths Studies.	5 GCSE passes, English and Maths at B/5	6.5 overall, 6.0 in W, 5.5 in R,L,S
Finance with Integrated Foundation Year	BSc (Econ) (Hons)	L11F	Single	4	qmul.ac.uk/L11F	Yes	L11X	L113	September		For full details of the entry requirements, please visit qmul.ac.uk/L11G			6.0 overall, 5.5 in all components
Finance with Integrated Foundation Year	BSc (Econ) (Hons)	L11G	Single	4	qmul.ac.uk/L11G	Yes	L11Y	L114	January		For full details of the entry requirements, please visit qmul.ac.uk/L11F			6.0 overall, 5.5 in all components
Engineering														
Aerospace Engineering	MEng (Hons)	H400	Single	4	qmul.ac.uk/H400	HHX3	H40Y	HK00	September		AAA including Mathematics, and Physics or Chemistry	36 points, 665 at HL including Mathematics, and either Physics or Chemistry	5 GCSE passes, English at C/4	6.0 overall, 5.5 in all components
Aerospace Engineering	BEng (Hons)	H421	Single	3	qmul.ac.uk/H421		H42Y	H401	September		AAB including Mathematics, and Physics or Chemistry	34 points, 665 at HL including Mathematics, and either Physics or Chemistry	5 GCSE passes, English at C/4	6.0 overall, 5.5 in all components
Chemical Engineering	BEng (Hons)	H812	Single	3	qmul.ac.uk/H812	HHX3	H81Y	H811	September		AAB including Mathematics, and Physics or Chemistry	34 points, 665 at HL including Mathematics, and either Physics or Chemistry	5 GCSE passes, English at C/4	6.0 overall, 5.5 in all components
Chemical Engineering	MEng (Hons)	H814	Single	4	qmul.ac.uk/H814		H84Y	H813	September		AAA including Mathematics, and Physics or Chemistry	36 points, 665 at HL including Mathematics, and either Physics or Chemistry	5 GCSE passes, English at C/4	6.0 overall, 5.5 in all components
Computer Systems Engineering	BEng (Hons)	HI62	Single	3	qmul.ac.uk/HI162	HHX0	HI6Y	H163	September		ABB including Mathematics	32 points, 655 at HL including Mathematics and a second relevant science subject	5 GCSE passes, English at C/4	6.0 overall, 5.5 in all components
Design, Innovation and Creative Engineering	BEng (Hons)	4A33	Single	3	qmul.ac.uk/4A33		4A3Y		September		AAB including Maths or Physics. If students do not have an additional creative subject they should be able to demonstrate creativity by another method, for example as a GCSE or an activity outside school.	34 points, 665 at HL including Mathematics or Physics, and one further subject from Mathematics, Physics, Chemistry or Design Technology	5 GCSE passes, English at C/4	6.0 overall, 5.5 in all components
Design, Innovation and Creative Engineering	MEng (Hons)	4L71	Single	4	qmul.ac.uk/4L71		4L7Y		September		AAA including Maths or Physics. If students do not have an additional in a creative subject they should be able to demonstrate creativity by another method, for example as a GCSE or an activity outside school.	36 points, 665 at HL including Mathematics or Physics, and one further subject from Mathematics, Physics, Chemistry or Design Technology	5 GCSE passes, English at C/4	6.0 overall, 5.5 in all components
Electrical and Electronic Engineering	MEng (Hons)	H608	Single	4	qmul.ac.uk/H608				September		AAB including Mathematics and a second science subject, preferably Physics, Electronics or Computing	34 points, 665 at HL. Alternatively, 32 points overall, 655 at HL including Mathematics or Computer Science.	5 GCSE passes, English at C/4	6.0 overall, 5.5 in all components
Electrical and Electronic Engineering	BEng (Hons)	H600	Single	3	qmul.ac.uk/H600	HHX0	H60Y	H602	September		ABB including Mathematics and a second science subject, preferably Physics, Electronics or Computing	32 points, 655 at HL including Mathematics and a second relevant science subject	5 GCSE passes, English at C/4	6.0 overall, 5.5 in all components

Subject / Programme	Award	UCAS Course Code	Type	Duration <sup>1</sup>	URL	Foundation	Year Abroad	Year with Industrial Experience/ Professional Placement	Entry Month		A Level Requirements <sup>2</sup>	International Baccalaureate Requirements	GCSE Requirements	English Language Requirements
Engineering														
Electronic Engineering	BEng (Hons)	H610	Single	3	qmul.ac.uk/H610	HHX0	H61Y	H611	September		ABB including Mathematics and a second science subject, preferably Physics, Electronics or Computing	32 points, 655 at HL including Mathematics and a second relevant science subject	5 GCSE passes, English at C/4	6.0 overall, 5.5 in all components
Mechanical Engineering	BEng (Hons)	H300	Single	3	qmul.ac.uk/H300		H30Y	H304	September		AAB including Mathematics, and Physics or Chemistry	34 points, 665 at HL including Mathematics, and either Physics or Chemistry	5 GCSE passes, English at C/4	6.0 overall, 5.5 in all components
Mechanical Engineering	MEng (Hons)	H301	Single	4	qmul.ac.uk/H301		H31Y	H302	September		AAA including Mathematics, and Physics or Chemistry	36 points, 665 at HL including Mathematics, and either Physics or Chemistry	5 GCSE passes, English at C/4	6.0 overall, 5.5 in all components
Robotics Engineering	MEng (Hons)	H67B	Single	4	qmul.ac.uk/H67B		H67X	H67C	September		AAA including Maths and a second science subject, preferably Physics, Electronics, Chemistry or Computing	36 points, 665 at HL including Mathematics, and either Physics or Chemistry	5 GCSE passes, English at C/4	6.0 overall, 5.5 in all components
Robotics Engineering	BEng (Hons)	H67A	Single	3	qmul.ac.uk/H67A		H67Y	H673	September		AAB including Maths and a second science subject, preferably Physics, Electronics, Chemistry or Computing	34 points, 665 at HL including Mathematics, and either Physics or Chemistry	5 GCSE passes, English at C/4	6.0 overall, 5.5 in all components
Software Engineering for Business	BSc (Hons)	IN10	Single	3	qmul.ac.uk/IN10		IN1Y	IN11	September		AAB. Alternatively, ABB including either Mathematics or Computer Science.	34 points, 665 at HL. Alternatively, 32 points overall, 655 at HL including Mathematics or Computer Science.	5 GCSE passes, English at C/4 and Maths at B/5	6.0 overall, 5.5 in all components
Sustainable Energy Engineering	MEng (Hons)	H224	Single	4	qmul.ac.uk/H224		H24Y	HG21	September		AAA including Mathematics, and Physics or Chemistry	36 points, 665 at HL including Mathematics, and either Physics or Chemistry	5 GCSE passes, English at C/4	6.0 overall, 5.5 in all components
Sustainable Energy Engineering	BEng (Hons)	H221	Single	3	qmul.ac.uk/H221	HHX0	H22Y	HF21	September		AAB including Mathematics, and Physics or Chemistry	34 points, 665 at HL including Mathematics, and either Physics or Chemistry	5 GCSE passes, English at C/4	6.0 overall, 5.5 in all components
English														
English	BA (Hons)	Q300	Single	3	qmul.ac.uk/Q300	QQX1	Q301		September		ABB, including A or above in English Literature, English Language and Literature or English Language	32 points, 655 at HL including a minimum of 6 in HL English A	5 GCSE passes, English at C/4	7.0 overall, 6.5 in W, 5.5 in R,L,S
English and Drama	BA (Hons)	QW34	Joint	3	qmul.ac.uk/QW34		QW4Y		September		ABB, including A or above in English Literature, English Language and Literature or English Language	32 points, 655 at HL including a minimum of 6 in HL English A	5 GCSE passes, English at C/4	7.0 overall, 6.5 in W, 5.5 in R,L,S
English and Film Studies	BA (Hons)	QW36	Joint	3	qmul.ac.uk/QW36		QW6Y		September		ABB, including A or above in English Literature, English Language and Literature or English Language	32 points, 655 at HL including a minimum of 6 in HL English A	5 GCSE passes, English at C/4	7.0 overall, 6.5 in W, 5.5 in R,L,S
English and History	BA (Hons)	QV31	Joint	3	qmul.ac.uk/QV31		QV3Y		September		ABB, including A or above in English Literature, English Language and Literature or English Language, and B or above in History	32 points, 655 at HL including a minimum of 6 in HL English A and a minimum of 5 in HL History	5 GCSE passes, English at C/4	7.0 overall, 6.5 in W, 5.5 in R,L,S
English Language	BA (Hons)	Q310	Single	3	qmul.ac.uk/Q310		Q311		September		ABB	32 points, 655 at HL	5 GCSE passes, English at C/4	7.0 overall, 7.0 in W, 5.5 in R,L,S
English Language and Linguistics	BA (Hons)	QQH1	Joint	3	qmul.ac.uk/QQH1		QQHY		September		ABB	32 points, 655 at HL	5 GCSE passes, English at C/4	7.0 overall, 7.0 in W, 5.5 in R,L,S
English Literature and Linguistics	BA (Hons)	QQ13	Joint	3	qmul.ac.uk/QQ13		QQ1Y		September		ABB, including A or above in English Literature, English Language and Literature or English Language	32 points, 655 at HL including a minimum of 6 in HL English A	5 GCSE passes, English at C/4	7.0 overall, 6.5 in W, 5.5 in R,L,S
English with Creative Writing	BA (Hons)	QW11	Single	3	qmul.ac.uk/QW11		QW1Y		September		ABB, including A or above in English Literature, English Language and Literature or English Language	32 points, 655 at HL including a minimum of 6 in HL English A	5 GCSE passes, English at C/4	7.0 overall, 6.5 in W, 5.5 in R,L,S
Film Studies														
Film Studies	BA (Hons)	P303	Single	3	qmul.ac.uk/P303	PPX1	P30Y		September		ABB, including at least one essay based subject in humanities or social science.	32 points, 655 at HL including an essay based humanities or social sciences subject	5 GCSE passes, English at C/4	7.0 overall, 7.0 in W, 5.5 in R,L,S
Film Studies and Drama	BA (Hons)	WW46	Joint	3	qmul.ac.uk/WW46		WW4Y		September		ABB, including at least one essay based subject in humanities or social science.	32 points, 655 at HL including a minimum of 6 in at least one arts, humanities or social sciences subject at HL and an essay based humanities or social sciences subject at HL	5 GCSE passes, English at C/4	7.0 overall, 6.5 in W, 5.5 in R,L,S
Film Studies and French	BA (Hons)	RW16	Joint	4	qmul.ac.uk/RW16		Yes		September		BBB, including at least one essay based subject in humanities or social science.	30 points, 555 at HL including an essay based humanities or social sciences subject.	5 GCSE passes, English at C/4	7.0 overall, 7.0 in W, 5.5 in R,L,S
Film Studies and German	BA (Hons)	RW26	Joint	4	qmul.ac.uk/RW26		Yes		September		BBB, including at least one essay based subject in humanities or social science	30 points, 555 at HL including an essay based humanities or social sciences subject	5 GCSE passes, English at C/4	7.0 overall, 7.0 in W, 5.5 in R,L,S

Subject / Programme	Award	UCAS Course Code	Type	Duration <sup>1</sup>	URL	Foundation	Year Abroad	Year with Industrial Experience/ Professional Placement	Entry Month		A Level Requirements <sup>2</sup>	International Bacculaureate Requirements	GCSE Requirements	English Language Requirements
Film Studies														
Film Studies and Hispanic Studies	BA (Hons)	RW46	Joint	4	qmul.ac.uk/RW46			Yes	September		BBB, including at least one essay based subject in humanities or social science	30 points, 555 at HL including an essay based humanities or social sciences subject	5 GCSE passes, English at C/4	7.0 overall, 7.0 in W, 5.5 in R,L,S
Film Studies and Russian	BA (Hons)	RW77	Joint	4	qmul.ac.uk/RW77			Yes	September		BBB, including at least one essay based subject in humanities or social science	30 points, 555 at HL including an essay based humanities or social sciences subject	5 GCSE passes, English at C/4	7.0 overall, 7.0 in W, 5.5 in R,L,S
Foundation Programmes														
Clinical Foundation Studies	FdCert	A120	Single	1	qmul.ac.uk/A120				September/ January		For full details of the entry requirements please visit qmul.ac.uk/A120			6.5 overall, 6.0 in W, 5.5 in R, L, S
International Foundation Year	FdCert	Y2GA	Single	1	qmul.ac.uk/Y2GA				September/ January		For full details of the entry requirements please visit qmul.ac.uk/Y2GA			6.0 including 5.5 in W, R, L, S
International Science and Engineering Foundation Programme	FdCert	FGHZ	Single	1	qmul.ac.uk/FGHZ				September		For full details of the entry requirements please visit qmul.ac.uk/FGHZ			5.0 overall including 5.0 in W, R, L, S
Geography and Environmental Science														
Environmental Science	BSc (Hons)	F850	Single	3	qmul.ac.uk/F850			F851	September		ABB. This must include at least one of the following subjects: Biology, Chemistry, Physics, Mathematics, Geography, Geology, Psychology, Environmental Studies or Environmental Science.	32 points, 655 at HL to include at least one of the following subjects: Biology, Chemistry, Physics, Mathematics, Geography, Geology, Psychology, Environmental Studies or Environmental Science.	5 GCSE passes, English at C/4	6.5 overall, 6.0 in W, 5.5 in R,L,S
Environmental Science with Business Management	BSc (Hons)	F8N2	Major / Minor	3	qmul.ac.uk/F8N2			F8NY	September		ABB. This must include at least one of the following subjects: Biology, Chemistry, Physics, Mathematics, Geography, Geology, Psychology, Environmental Studies or Environmental Science.	32 points, 655 at HL to include at least one of the following subjects: Biology, Chemistry, Physics, Mathematics, Geography, Geology, Psychology, Environmental Studies or Environmental Science.	5 GCSE passes, English at C/4	6.5 overall, 6.0 in W, 5.5 in R,L,S
Geography BA	BA (Hons)	L700	Single	3	qmul.ac.uk/L700	LLX1	L701		September		ABB. Geography or a relevant subject preferred.	32 points, 655 at HL. Geography or a relevant subject at HL preferred.	5 GCSE passes, English at C/4	7.0 overall, 6.5 in W, 5.5 in R,L,S
Geography BSc	BSc (Hons)	F800	Single	3	qmul.ac.uk/F800	LLX1	F801		September		ABB. Geography or a relevant subject preferred.	32 points, 655 at HL. Geography or a relevant subject at HL preferred.	5 GCSE passes, English at C/4	7.0 overall, 6.5 in W, 5.5 in R,L,S
Geography with Business Management	BSc (Hons)	FVN1	Major / Minor	3	qmul.ac.uk/FVN1			FVNY	September		ABB. Geography or a relevant subject preferred.	32 points, 655 at HL. Geography or a relevant subject at HL preferred.	5 GCSE passes, English at C/4	7.0 overall, 6.5 in W, 5.5 in R,L,S
Human Geography	BA (Hons)	L720	Single	3	qmul.ac.uk/L720			L72Y	September		ABB. Geography or a relevant subject preferred.	32 points, 655 at HL. Geography or a relevant subject at HL preferred.	5 GCSE passes, English at C/4	7.0 overall, 6.5 in W, 5.5 in R,L,S
History														
Cultural History	BA (Hons)	V142	Single	3	qmul.ac.uk/V142			V143	September		ABB including History	32 points, 655 at HL including History	5 GCSE passes, English at C/4	7.0 overall, 6.5 in W, 5.5 in R,L,S
History	BA (Hons)	V101	Single	3	qmul.ac.uk/V101	VVX1	V111		September		ABB including History	32 points, 655 at HL including History	5 GCSE passes, English at C/4	7.0 overall, 6.5 in W, 5.5 in R,L,S
History and Comparative Literature	BA (Hons)	VQ12	Joint	3	qmul.ac.uk/VQ12			VQ1Y	September		ABB including History	32 points, 655 at HL including History	5 GCSE passes, English at C/4	7.0 overall, 7.0 in W, 5.5 in R,L,S
History and Politics	BA (Hons)	LV21	Joint	3	qmul.ac.uk/LV21			LV20	September		ABB including History	32 points, 655 at HL including History	5 GCSE passes, English at C/4	7.0 overall, 6.5 in W, 5.5 in R,L,S
Intellectual History	BA (Hons)	V300	Single	3	qmul.ac.uk/V300			V301	September		ABB including History	32 points, 655 at HL including History	5 GCSE passes, English at C/4	7.0 overall, 6.5 in W, 5.5 in R,L,S
Modern and Contemporary History	BA (Hons)	V140	Single	3	qmul.ac.uk/V140			V141	September		ABB including History	32 points, 655 at HL including History	5 GCSE passes, English at C/4	7.0 overall, 6.5 in W, 5.5 in R,L,S
World History	BA (Hons)	V270	Single	3	qmul.ac.uk/V270			V271	September		ABB including History	32 points, 655 at HL including History	5 GCSE passes, English at C/4	7.0 overall, 6.5 in W, 5.5 in R,L,S

<sup>\*</sup>Programme subject to approval.

<sup>1</sup>Programmes with an integrated foundation year, year abroad or industrial/professional experience will be one year longer in duration. Please note that programmes that include a modern foreign language will require a year abroad.

<sup>2</sup>General Studies and Critical Thinking A levels are not accepted as part of our entry requirements.

Subject / Programme	Award	UCAS Course Code	Type	Duration <sup>1</sup>	URL	Foundation	Year Abroad	Year with Industrial Experience/ Professional Placement	Entry Month		A Level Requirements <sup>2</sup>	International Baccalaureate Requirements	GCSE Requirements	English Language Requirements
Law														
English and European Law	LLB (Hons)	M120	Single	4	qmul.ac.uk/M120		Yes		September		A*AA	36 points overall, 666 at HL.	AAAABB or 777766 including English and Mathematics.	7.0 overall, 6.5 in W, 5.5 in R,L,S
English and French Law	LLB (Hons)	M106	Single	4	qmul.ac.uk/M106		Yes		September		A*AA, including French (or DELF at B2 Level). Eligible applicants will be interviewed.	36 points overall, 666 at HL including French (or DELF at B2 Level).	AAAABB or 777766 including English and Mathematics.	7.0 overall, 6.5 in W, 5.5 in R,L,S
Global Law	LLB (Hons)	M105	Single	4	qmul.ac.uk/M105		Yes		September		A*AA	36 points overall, 666 at HL.	AAAABB or 777766 including English and Mathematics.	7.0 overall, 6.5 in W, 5.5 in R,L,S
Law	LLB (Hons)	M100	Single	3	qmul.ac.uk/M100				September		A*AA	36 points overall, 666 at HL.	AAAABB or 777766 including English and Mathematics.	7.0 overall, 6.5 in W, 5.5 in R,L,S
Law and Politics	LLB (Hons)	ML13	Joint	3	qmul.ac.uk/ML13				September		A*AA	36 points overall, 666 at HL.	AAAABB or 777766 including English and Mathematics.	7.0 overall, 6.5 in W, 5.5 in R,L,S
Law Senior Status	LLB (Hons)	M101	Single	2	qmul.ac.uk/M101				September		2:1 honours degree or equivalent			7.0 overall, 6.5 in W, 5.5 in R,L,S
Law with Business	LLB (Hons)	M1N1	Major / Minor	3	qmul.ac.uk/M1N1				September		A*AA	36 points overall, 666 at HL.	AAAABB or 777766 including English and Mathematics.	7.0 overall, 6.5 in W, 5.5 in R,L,S
Linguistics														
Linguistics	BA (Hons)	Q100	Single	3	qmul.ac.uk/Q100	QQX2	Q101		September		ABB	32 points, 655 at HL	5 GCSE passes, English at grade C/4	7.0 overall, 7.0 in W, 5.5 in R,L,S
Materials Science														
Biomedical Engineering	BEng (Hons)	HBF2	Single	3	qmul.ac.uk/HBF2		HBFY	HBF1	September		AAB including Mathematics, and Physics or Chemistry	34 points, 665 at HL including Mathematics, and either Physics or Chemistry	5 GCSE passes, English at C/4	6.0 overall, 5.5 in all components
Biomedical Engineering	MEng (Hons)	HBF5	Single	4	qmul.ac.uk/HBF5		HBFX	HBF3	September		AAA including Mathematics, and Physics or Chemistry	36 points, 665 at HL including Mathematics, and either Physics or Chemistry	5 GCSE passes, English at C/4	6.0 overall, 5.5 in all components
Materials Science and Engineering	BEng (Hons)	J511	Single	3	qmul.ac.uk/J511		J51Y	JM11	September		ABB including at least two subjects of Mathematics, Physics or Chemistry	32 points, 655 at HL including at least two subjects of Mathematics, Physics or Chemistry	5 GCSE passes, English at C/4	6.0 overall, 5.5 in all components
Materials Science and Engineering	MEng (Hons)	J512	Single	4	qmul.ac.uk/J512		J52Y	JM10	September		AAA including at least two subjects of Mathematics, Physics or Chemistry	36 points, 665 at HL including at least two subjects of Mathematics, Physics or Chemistry	5 GCSE passes, English at C/4	6.0 overall, 5.5 in all components
Mathematical Sciences														
Actuarial Science	BSc (Hons)	N323	Single	3	qmul.ac.uk/N323		N32Y	N32P	September		AAA, including A or above in Mathematics.	36 points, 666 at HL including Mathematics	5 GCSE passes, English at C/4 and Maths at B/5.	6.0 overall, 5.5 in all components
Financial Mathematics	MSci (Hons)	GN1H	Single	4	qmul.ac.uk/GN1H		GNHY	GN2H	September		AAA, including Mathematics.	36 points, 666 at HL including Mathematics	5 GCSE passes, English at C/4 and Maths at B/5.	6.0 overall, 5.5 in all components
Mathematics	MSci (Hons)	G102	Single	4	qmul.ac.uk/G102		G12Y		September		AAA, including Mathematics.	36 points, 666 at HL including Mathematics	5 GCSE passes, English at C/4 and Maths at B/5.	6.0 overall, 5.5 in all components
Mathematics	BSc (Hons)	G100	Single	3	qmul.ac.uk/G100	GGX2	G10Y	G101	September		ABB, including A or above in Mathematics.	32 points, 655 at HL including Mathematics	5 GCSE passes, English at C/4 and Maths at B/5.	6.0 overall, 5.5 in all components
Mathematics and Statistics	BSc (Hons)	GG31	Joint	3	qmul.ac.uk/GG31	GGX2	GG3Y	GG32	September		ABB, including A or above in Mathematics.	32 points, 655 at HL including Mathematics	5 GCSE passes, English at C/4 and Maths at B/5.	6.0 overall, 5.5 in all components
Mathematics with Finance and Accounting	BSc (Hons)	G1N4	Major / Minor	3	qmul.ac.uk/G1N4	GGX2	G14Y	G1N6	September		ABB, including A or above in Mathematics.	32 points, 655 at HL including Mathematics	5 GCSE passes, English at C/4 and Maths at B/5.	6.0 overall, 5.5 in all components
Mathematics with Management	BSc (Hons)	G12N	Major / Minor	3	qmul.ac.uk/G12N		G13N	G1NN	September		AAB, including A or above in Mathematics.	34 points, 665 at HL including Mathematics	5 GCSE passes, English at C/4 and Maths at B/5.	6.0 overall, 5.5 in all components



Subject / Programme	Award	UCAS Course Code	Type	Duration <sup>1</sup>	URL	Foundation	Year Abroad	Year with Industrial Experience/ Professional Placement	Entry Month		A Level Requirements <sup>2</sup>	International Baccalaureate Requirements	GCSE Requirements	English Language Requirements
Mathematical Sciences														
Mathematics, Statistics and Financial Economics	BSc (Hons)	GL11	Triple	3	qmul.ac.uk/GL11		GL1Y	GL12	September		AAA, including Mathematics.	36 points, 666 at HL including Mathematics	5 GCSE passes, English at C/4 and Maths at B/5.	6.5 overall, 6.0 in W, 5.5 in R,L,S
Pure Mathematics	BSc (Hons)	G110	Single	3	qmul.ac.uk/G110	GGX2	G1NY		September		ABB, including A or above in Mathematics.	32 points, 655 at HL including Mathematics	5 GCSE passes, English at C/4 and Maths at B/5.	6.0 overall, 5.5 in all components
Medicine														
Medicine - Graduate Entry Programme (4 year)	MBBS	A101	Single	4	qmul.ac.uk/A101				September		For full details of the entry requirements, please visit qmul.ac.uk/A101			
Medicine (5 Year Programme)	MBBS	A100	Single	5	qmul.ac.uk/A100				September		A*AA including Biology or Chemistry, and a second science from Biology, Chemistry, Physics or Mathematics. Results must be achieved in one sitting over a period of no longer than two years.	38 points, 666 at HL including Biology or Chemistry, and a second science or Mathematics	AAABBB or 777666 to include Biology (or Human Biology), Chemistry, English Language and Mathematics. Science Double Award will also be considered	7.0 overall, 6.5 in W, 5.5 in R, L, S
Medicine (Malta, 5 Year Programme)	MBBS	A110	Single	5	qmul.ac.uk/A110				September		AAB including grade A in Biology or Chemistry and grade A in a second science from Biology, Chemistry, Physics or Mathematics. Results must be achieved in one sitting over a period of no longer than two years	37 points, 665 at HL including Biology or Chemistry, and a second science or Mathematics		7.0 overall, 6.5 in W, 5.5 in R, L, S
Modern Languages and Culture														
French and Comparative Literature	BA (Hons)	RQ12	Joint	4	qmul.ac.uk/RQ12			Yes	September		BBB, including at least one essay based subject in humanities or social science.	30 points, 555 at HL including an essay based humanities or social sciences subject.	5 GCSE passes, English at C/4	7.0 overall, 7.0 in W, 5.5 in R,L,S
French and Linguistics	BA (Hons)	RQ11	Joint	4	qmul.ac.uk/RQ11			Yes	September		BBB, including at least one essay based subject in humanities or social science.	30 points, 555 at HL including an essay based humanities or social sciences subject.	5 GCSE passes, English at C/4	7.0 overall, 7.0 in W, 5.5 in R,L,S
French and Politics	BA (Hons)	LR21	Joint	4	qmul.ac.uk/LR21			Yes	September		ABB, including at least one essay based subject in humanities or social science.	32 points, 655 at HL including an essay based humanities or social sciences subject.	5 GCSE passes, English at C/4	7.0 overall, 7.0 in W, 5.5 in R,L,S
French with Business Management	BA (Hons)	R1N1	Major / Minor	4	qmul.ac.uk/R1N1			Yes	September		ABB.	32 points, 655 at HL	5 GCSE passes, English at C/4	7.0 overall, 7.0 in W, 5.5 in R,L,S
German and Comparative Literature	BA (Hons)	QR22	Joint	4	qmul.ac.uk/QR22			Yes	September		BBB, including at least one essay based subject in humanities or social science	30 points, 555 at HL including an essay based humanities or social sciences subject	5 GCSE passes, English at C/4	7.0 overall, 7.0 in W, 5.5 in R,L,S
German and Linguistics	BA (Hons)	RQ21	Joint	4	qmul.ac.uk/RQ21			Yes	September		BBB, including at least one essay based subject in humanities or social science	30 points, 555 at HL including an essay based humanities or social sciences subject	5 GCSE passes, English at C/4	7.0 overall, 7.0 in W, 5.5 in R,L,S
German and Politics	BA (Hons)	LR22	Joint	4	qmul.ac.uk/LR22			Yes	September		ABB, including at least one essay based subject in humanities or social science.	32 points, 655 at HL including an essay based humanities or social sciences subject	5 GCSE passes, English at C/4	7.0 overall, 7.0 in W, 5.5 in R,L,S
German with Business Management	BA (Hons)	R2N1	Major / Minor	4	qmul.ac.uk/R2N1			Yes	September		ABB, including at least one essay based subject in humanities or social science	32 points, 655 at HL	5 GCSE passes, English at C/4	7.0 overall, 7.0 in W, 5.5 in R,L,S
Hispanic Studies and Comparative Literature	BA (Hons)	QR24	Joint	4	qmul.ac.uk/QR24			Yes	September		BBB, including at least one essay based subject in humanities or social science	30 points, 555 at HL including an essay based humanities or social sciences subject	5 GCSE passes, English at C/4	7.0 overall, 7.0 in W, 5.5 in R,L,S
Hispanic Studies and Linguistics	BA (Hons)	RQ41	Joint	4	qmul.ac.uk/RQ41			Yes	September		BBB, including at least one essay based subject in humanities or social science	30 points, 555 at HL including an essay based humanities or social sciences subject	5 GCSE passes, English at C/4	7.0 overall, 7.0 in W, 5.5 in R,L,S
Hispanic Studies and Politics	BA (Hons)	LR24	Joint	4	qmul.ac.uk/LR24			Yes	September		ABB, including at least one essay based subject in humanities or social science.	32 points, 655 at HL including an essay based humanities or social sciences subject	5 GCSE passes, English at C/4	7.0 overall, 7.0 in W, 5.5 in R,L,S
Hispanic Studies with Business Management	BA (Hons)	R4N1	Major / Minor	4	qmul.ac.uk/R4N1			Yes	September		ABB, including at least one essay based subject in humanities or social science	32 points, 655 at HL	5 GCSE passes, English at C/4	7.0 overall, 7.0 in W, 5.5 in R,L,S

Subject / Programme	Award	UCAS Course Code	Type	Duration <sup>1</sup>	URL	Foundation	Year Abroad	Year with Industrial Experience/ Professional Placement	Entry Month		A Level Requirements <sup>2</sup>	International Baccalaureate Requirements	GCSE Requirements	English Language Requirements
Modern Languages and Culture														
Modern Languages	BA (Hons)	R900	Single	4	qmul.ac.uk/R900	RRX2	Yes		September		BBB including at least one essay based subject. All other subjects offered as major languages may be studied from beginners' level, in either single or dual language combinations. In any dual language combination, applicants may not study more than one language from beginners' level.	30 points, 555 at HL including an essay based humanities or social sciences subject	5 GCSE passes, English at C/4	7.0 overall, 7.0 in W, 5.5 in R,L,S
Russian and Comparative Literature	BA (Hons)	QR72	Joint	4	qmul.ac.uk/QR72		Yes		September		BBB, including at least one essay based subject in humanities or social science	30 points, 555 at HL including an essay based humanities or social sciences subject	5 GCSE passes, English at C/4	7.0 overall, 7.0 in W, 5.5 in R,L,S
Russian and Linguistics	BA (Hons)	QR71	Joint	4	qmul.ac.uk/QR71		Yes		September		BBB, including at least one essay based subject in humanities or social science	30 points, 555 at HL including an essay based humanities or social sciences subject	5 GCSE passes, English at C/4	7.0 overall, 7.0 in W, 5.5 in R,L,S
Russian and Politics	BA (Hons)	RL72	Joint	4	qmul.ac.uk/RL72		Yes		September		ABB, including at least one essay based subject in humanities or social science.	32 points, 655 at HL including an essay based humanities or social sciences subject	5 GCSE passes, English at C/4	7.0 overall, 7.0 in W, 5.5 in R,L,S
Russian with Business Management	BA (Hons)	R1N7	Major / Minor	4	qmul.ac.uk/R1N7		Yes		September		ABB, including at least one essay based subject in humanities or social science	32 points, 655 at HL	5 GCSE passes, English at C/4	7.0 overall, 7.0 in W, 5.5 in R,L,S
Physics and Astronomy														
Astrophysics	MSci (Hons)	F523	Single	4	qmul.ac.uk/F523		F52A		September		AAB including A or above in both Mathematics and Physics	34 points, 665 at HL, including a minimum of 6 in both HL Mathematics and HL Physics	5 GCSE passes, English and Maths at C/4	6.0 overall, 5.5 in all components
Astrophysics	BSc (Hons)	F526	Single	3	qmul.ac.uk/F526	FFX0	F52Y		September		ABB including A or above in at least one of Mathematics and Physics. Both subjects are required.	32 points, 655 at HL including 6 in HL Mathematics or Physics, with both subjects being taken at HL	5 GCSE passes, English and Maths at C/4	6.0 overall, 5.5 in all components
Physics	BSc (Hons)	F300	Single	3	qmul.ac.uk/F300	FFX0	F302	F306	September		ABB including A or above in at least one of Mathematics and Physics. Both subjects are required.	32 points, 655 at HL including 6 in HL Mathematics or Physics, with both subjects being taken at HL	5 GCSE passes, English and Maths at C/4	6.0 overall, 5.5 in all components
Physics	MSci (Hons)	F303	Single	4	qmul.ac.uk/F303		F301	F307	September		AAB including A or above in both Mathematics and Physics	34 points, 665 at HL including a minimum of 6 in both HL Mathematics and HL Physics.	5 GCSE passes, English and Maths at C/4	6.0 overall, 5.5 in all components
Physics with Astrophysics	MSci (Hons)	F3FM	Major / Minor	4	qmul.ac.uk/F3FM		F3FA		September		AAB including A or above in both Mathematics and Physics	34 points, 665 at HL including a minimum of 6 in both HL Mathematics and HL Physics.	5 GCSE passes, English and Maths at C/4	6.0 overall, 5.5 in all components
Physics with Astrophysics	BSc (Hons)	F3F5	Major / Minor	3	qmul.ac.uk/F3F5	FFX0	F3FY		September		ABB including A or above in at least one of Mathematics and Physics. Both subjects are required.	32 points, 655 at HL including 6 in HL Mathematics or Physics, with both subjects being taken at HL	5 GCSE passes, English and Maths at C/4	6.0 overall, 5.5 in all components
Physics with Data Science	BSc (Hons)	F30S	Major / Minor	3	qmul.ac.uk/F30S				September		ABB including A or above in at least one of Mathematics and Physics. Both subjects are required.	32 points, 655 at HL including 6 in HL Mathematics or Physics, with both subjects being taken at HL	5 GCSE passes, English and Maths at C/4	6.0 overall, 5.5 in all components
Physics with Data Science	MSci (Hons)	F30T	Major / Minor	4	qmul.ac.uk/F30T				September		AAB including A or above in both Mathematics and Physics	34 points, 665 at HL including a minimum of 6 in both HL Mathematics and HL Physics.	5 GCSE passes, English and Maths at C/4	6.0 overall, 5.5 in all components
Physics with Particle Physics	MSci (Hons)	F393	Major / Minor	4	qmul.ac.uk/F393		F39A		September		AAB including A or above in both Mathematics and Physics	34 points, 665 at HL including a minimum of 6 in both HL Mathematics and HL Physics.	5 GCSE passes, English and Maths at C/4	6.0 overall, 5.5 in all components
Physics with Particle Physics	BSc (Hons)	F392	Major / Minor	3	qmul.ac.uk/F392	FFX0	F39Y		September		ABB including A or above in at least one of Mathematics and Physics. Both subjects are required.	32 points, 655 at HL including 6 in HL Mathematics or Physics, with both subjects being taken at HL	5 GCSE passes, English and Maths at C/4	6.0 overall, 5.5 in all components
Theoretical Physics	MSci (Hons)	F323	Single	4	qmul.ac.uk/F323		F34A		September		AAB including A or above in both Mathematics and Physics	34 points, 665 at HL, including a minimum of 6 in both HL Mathematics and HL Physics	5 GCSE passes, English and Maths at C/4	6.0 overall, 5.5 in all components
Theoretical Physics	BSc (Hons)	F340	Single	3	qmul.ac.uk/F340	FFX0	F34Y		September		ABB including A or above in at least one of Mathematics and Physics. Both subjects are required.	32 points, 655 at HL including 6 in HL Mathematics or Physics, with both subjects being taken at HL	5 GCSE passes, English and Maths at C/4	6.0 overall, 5.5 in all components

Subject / Programme	Award	UCAS Course Code	Type	Duration <sup>1</sup>	URL	Foundation	Year Abroad	Year with Industrial Experience/ Professional Placement	Entry Month		A Level Requirements <sup>2</sup>	International Baccalaureate Requirements	GCSE Requirements	English Language Requirements
Politics and International Relations														
Politics	BA (Hons)	L202	Single	3	qmul.ac.uk/L202		L20Y		September		AAB-ABB	32-34 points, 665-655 at HL	5 GCSE passes, English and Maths at C/4.	7.0 overall, 6.5 in W, 5.5 in R,L,S
Politics and International Relations	BA (Hons)	L240	Joint	3	qmul.ac.uk/L240		L24Y		September		AAB-ABB	32-34 points, 665-655 at HL	5 GCSE passes, English and Maths at C/4.	7.0 overall, 6.5 in W, 5.5 in R,L,S
Politics and Sociology	BA (Hons)	L2L3	Joint	3	qmul.ac.uk/L2L3		L23L		September		AAB-ABB	32-34 points, 665-655 at HL	5 GCSE passes, English and Maths at C/4.	7.0 overall, 6.5 in W, 5.5 in R,L,S
Politics with Business Management	BA (Hons)	L2NF	Major / Minor	3	qmul.ac.uk/L2NF		L2NY		September		AAB-ABB	32-34 points, 665-655 at HL	5 GCSE passes, English and Maths at C/4.	7.0 overall, 6.5 in W, 5.5 in R,L,S
Psychology														
Psychology	BSc (Hons)	C800	Single	3	qmul.ac.uk/C800		C80Y	C80P	September		AAB including at least one of the following: Biology, Chemistry, Maths, Further Maths, Physics or Psychology	35 points overall. 665 at HL including at least one of the following: Biology, Chemistry, Maths, Further Maths, Physics or Psychology.	5 GCSE passes, English and Maths at C/4	6.5 overall, 6.0 in W, 5.5 in R,L,S

# How to apply

## Do your research

### June to October

Choose your degree programme and check the entry requirements:

[qmul.ac.uk/undergraduate](https://qmul.ac.uk/undergraduate)

Open Day dates to be updated:

[qmul.ac.uk/undergraduate/openday](https://qmul.ac.uk/undergraduate/openday)

You can also speak to current Queen Mary students online: [qmul.ac.uk/unibuddy](https://qmul.ac.uk/unibuddy)

Virtual campus tours:

[qmul.ac.uk/campustours](https://qmul.ac.uk/campustours)

Prepare your UCAS application.

Register your UCAS account: [ucas.com/apply](https://ucas.com/apply)

Write your personal statement.

Organise your academic reference.

## Make your application

### September to June

Submit your application from early September:

[ucas.com](https://ucas.com)

Queen Mary's code is **Q50**

**15 October 2021:** Medicine and Dentistry application deadline: [qmul.ac.uk/smd](https://qmul.ac.uk/smd)

**15 January 2022:** UCAS application deadline. Some courses may close after this date.

**30 June 2022:** Final UCAS application deadline. Applications after this date go into Clearing.

## Accept your offer

### January to June

If you apply by 15 January 2022, you should get a decision by 31 March 2022.

Decide your firm and insurance choices on UCAS track by early May 2022.

If you apply after 15 January 2022, you will have a later deadline to respond to your offer. Check: [track.ucas.com](https://track.ucas.com) for deadlines.

**31 May 2022:** Accommodation application deadline. Once you have firmly accepted your offer you can apply for accommodation: [residences.qmul.ac.uk](https://residences.qmul.ac.uk)

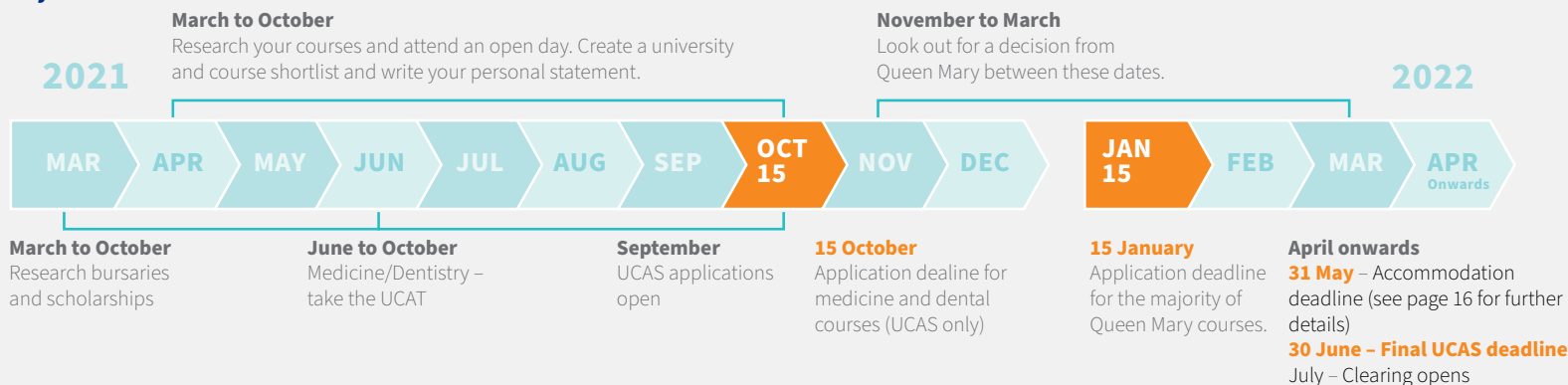
We will write to you after you have accepted your offer to advise on next steps.

The dates here refer to courses starting in September 2022.





## Key dates



## Contextual admissions

We want to make it clear that higher education can be for everyone. **Over 40 per cent of our students are the first in their family to go to university, and we're proud that so many different students, from different places, choose Queen Mary.**

UK students from backgrounds traditionally underrepresented in higher education may receive a lower grade offer than usual to study at Queen Mary. This is called contextual admissions, and means we use information and data about applicants to assess individual circumstances and potential. This is part of Queen Mary's commitment to

widening participation and making sure the University is inclusive and welcomes students from all backgrounds.

We might also make a standard offer to an applicant even if your academic record would normally have meant you didn't meet the threshold routinely used to decide who gets an offer. Equally, in some cases we'll consider your circumstances and confirm your offer if your final results are marginally short of what's needed.

Read more [qmul.ac.uk/undergraduate/apply/entry/contextualised-admissions](https://qmul.ac.uk/undergraduate/apply/entry/contextualised-admissions)

## Degree Apprenticeships

Degree Apprenticeships allow you to study at Queen Mary towards a full undergraduate degree, taking on zero tuition fee debt and gaining up to four years' work experience, all while earning a salary. You study on campus but keep working for the company that sponsors you, and undertake work-based assessments. Queen Mary offers degree apprenticeships in BSc (Hons) Digital and Technology Solutions (Software Engineering) and BSc (Hons) Business Management (Social Change). Degree Apprentices are employees of their sponsoring companies. You apply directly to an employer or through the National Apprenticeship Service.

See [qmul.ac.uk/degreeapprenticeships/programmes](https://qmul.ac.uk/degreeapprenticeships/programmes)

# Student funding and finance

The information in this section is correct as of March 2021. Up-to-date information on fees and financial support can be found at [qmul.ac.uk/undergraduate/feesandfunding](https://qmul.ac.uk/undergraduate/feesandfunding)



## UK (Home) tuition fees

Queen Mary's 'Home' rate of tuition fee for students starting their course in 2022/23 is £9,250. Tuition may increase depending on inflation and government policy. Any changes to University fees will be published for individual courses online via the undergraduate course finder [qmul.ac.uk/undergraduate](https://qmul.ac.uk/undergraduate)

Remember, if you choose to access the government's student finance tuition fee loan, you do not have to pay your tuition fees upfront.

To check how Queen Mary will assess your tuition fee status please see [welfare.qmul.ac.uk/money/tuition-fee-status-will-i-pay-home-or-overseas-rate-tuition-fee](https://welfare.qmul.ac.uk/money/tuition-fee-status-will-i-pay-home-or-overseas-rate-tuition-fee)

## International tuition fees

For information on our international university fees, visit [qmul.ac.uk/international/international-students/tuitionfees](https://qmul.ac.uk/international/international-students/tuitionfees)

For details on UK Visas and Immigration funding requirements for student immigration permission, see [welfare.qmul.ac.uk/international](https://welfare.qmul.ac.uk/international)

## Advice and support

You are welcome to contact our Advice and Counselling Service for individual, confidential advice about your eligibility for funding, planning your budget, applying for

student finance or any other financial or practical issue. You can contact us at any time before starting your course, and throughout your studies. We particularly encourage students from a care background, or who otherwise have no contact with their family, or are living alone in the UK to contact us for advice in advance of starting their course. [welfare.qmul.ac.uk](https://welfare.qmul.ac.uk)

### UK government student finance

The government's student finance package includes:

- tuition fee loans (for covering the cost of UK-based university tuition. This is not income-assessed)
- maintenance loans (to help with cost of living. This is partly income-assessed)
- supplementary grants (for students with particular circumstances or needs).

Students who are UK residents should apply as early as possible to Student Finance England (or the equivalent in Wales, Scotland or Northern Ireland), who will determine your eligibility. Student from the EU, EEA or Switzerland should check our guidance below to understand whether you are eligible for UK government funding. This largely depends on your immigration status in the UK.

For up-to-date information about your eligibility for student finance, and what funding you are eligible for according to your household income and personal circumstances, visit [welfare.qmul.ac.uk/guides/undergraduate-funding](https://welfare.qmul.ac.uk/guides/undergraduate-funding)

### Financial Assistance Fund

The Financial Assistance Fund can help students with living costs as well as sudden financial emergencies. You do not normally have to repay a payment from the Fund.

The amounts available to students are strictly limited, and the Fund can in no way be regarded as a substitute to your main source of funding. For the most up-to-date information on the Fund, visit

[arcs.qmul.ac.uk/students/finances/bursaries-grants-scholarships/financial-assistance-fund](https://arcs.qmul.ac.uk/students/finances/bursaries-grants-scholarships/financial-assistance-fund)

### Scholarships and bursaries

For details of Queen Mary's bursaries and scholarships for Home/EU students, visit

[arcs.qmul.ac.uk/students/finances/bursaries-grants-scholarships/qmul-bursaries](https://arcs.qmul.ac.uk/students/finances/bursaries-grants-scholarships/qmul-bursaries)

International students can find scholarship information at [qmul.ac.uk/scholarships](https://qmul.ac.uk/scholarships)

For up to date information about the Bursary amounts and the income assessment please visit

[arcs.qmul.ac.uk/students/finances/bursaries-grants-scholarships/qmul-bursaries](https://arcs.qmul.ac.uk/students/finances/bursaries-grants-scholarships/qmul-bursaries)

You don't need to apply for the bursary as long as you have applied to your regional student authority for income assessed UK government financial support. More at [qmul.ac.uk/scholarships/items/queen-mary-university-of-london-bursary](https://qmul.ac.uk/scholarships/items/queen-mary-university-of-london-bursary)

### Living costs

Depending on your lifestyle, living in London away from home for an academic year (September to June) tends to cost an average of at least £13,000 (2020-21). Please note that it will cost more for a full 52 weeks. For more detailed information about costs, money-saving tips, how to prepare a budget, applying for student finance, and additional funding options, visit [welfare.qmul.ac.uk/money](https://welfare.qmul.ac.uk/money)

### University fees and additional costs

The University fees cover tuition, registration, examinations and membership of the Students' Union. You will be required to pay for your own course materials, such as textbooks and laboratory coats. If you are attending field trips or language courses away from Queen Mary, you may be required to pay part or all of the cost. It is important to understand when your tuition fee payments fall due, which is explained in our Tuition Fee Regulations: [qmul.ac.uk/tuition-fee-regulations](https://qmul.ac.uk/tuition-fee-regulations)

# International student admissions

**Queen Mary welcomes students from across the globe. We have over 160 nationalities represented on campus.**

“The student community at Queen Mary is really welcoming and vibrant – I’ve met people from all over the world.”

**Timothy Loong, second-year MBBS**

After accepting your offer from Queen Mary, you'll soon receive details about applying for our accommodation. An offer of accommodation is guaranteed for every student new to Queen Mary.

Throughout the summer, you'll receive communications from Queen Mary about preparing for life in London and getting ready for your programme.

Once you've met your offer and have changed status to 'Unconditional', we'll send you details about applying for a visa, if needed. This normally happens up to three months before you are due to start your degree.

Timothy in Brighton, a short train ride from London.



## Entry qualifications

We consider many different qualifications for direct entry. Students who are not able to achieve direct entry may be able to apply for our International Foundation Year instead, which has pathways into almost all degree programmes.

The easiest way to find out if the qualifications you are taking will be considered is to visit our country pages [qmul.ac.uk/international-students/countries](http://qmul.ac.uk/international-students/countries)

For English language requirements, including how to provide evidence of your ability, visit [qmul.ac.uk/international-students/englishlanguage requirements](http://qmul.ac.uk/international-students/englishlanguage requirements)

## Making an application

Undergraduate applications will need to be made through UCAS, through which you can apply to five degree programmes. Applications to the International Foundation Year can be made via UCAS for the integrated four-year option, or directly to Queen Mary for the standalone Foundation Year.

International application information, including visas, financial, medical and other requirements, can be found at [qmul.ac.uk/international-students](http://qmul.ac.uk/international-students)

## International funding and finance

### Tuition fees

Most international students pay overseas tuition fees. To find out which fee rate you'll need to pay, check out our Advice and Counselling Service guide to tuition fee status at [welfare.qmul.ac.uk/money](http://welfare.qmul.ac.uk/money)

You can see the latest University fees for each of our programmes on our course pages [qmul.ac.uk/study](http://qmul.ac.uk/study)

### Visa, CAS and maintenance fees

Visa applications are made through the Student Route. Students are required to need to meet the UKVI financial requirements, which you can find in the UKVI's online guidelines. These requirements are important – 80 per cent of visa application refusals are caused by the applicant's failure to meet them.

The general requirement is to show you have enough money to pay your first-year course fees plus the required maintenance available in your bank account 28 days prior to making your visa application.

As well as the University fees you must be able to show the UKVI you have the required living costs of £1,265 for each month of your course for a maximum of nine months. Most students studying for longer than nine months will need to show £11,385 for their living expenses.

You'll find all the latest information and guides to the different things you'll need on our Advice and Counselling Service pages here [welfare.qmul.ac.uk/international](http://welfare.qmul.ac.uk/international)

### Scholarships and bursaries

Studying at university – especially one in another country – is a big investment, personally and financially. We understand that, and continue to believe that education is for everyone. That's why there's a variety of scholarships and bursaries available to help the brightest undergraduate students, with awards of up to £5000, depending on your situation. You can search by country and academic school on our site [qmul.ac.uk/scholarships/database](http://qmul.ac.uk/scholarships/database)

### Before you arrive

The Global Engagement Office has staff who are on hand to speak with students both pre- and post-application. The team provide weekly communications with offer holders over the spring and summer, while also delivering in-person and virtual pre-departure briefings to London-bound students, an airport collection service, and our International Welcome Programme. We also offer advice about accommodation, scholarships, funding and English language requirements.

Find out more at [qmul.ac.uk/international-students](http://qmul.ac.uk/international-students)

We'll check that all your personal and study details are accurate, and then release your Certificate of Acceptance of Study (CAS). You add your CAS number to your visa application to UKVI.

Visas typically take four weeks to be issued, though timings do vary country by country and at different times.

Once your visa is secured, start looking at flights to London and preparing for your studies.

Enrol online and arrive in London in September to join Welcome Week and your academic induction programme.

# Getting here and getting around

**London is an incredible city to live in, and your time here will give you plenty of opportunities to explore.**



Getting around has never been easier: all our campuses are well connected to the rest of the city, the UK, and further afield.

Mile End campus is just five minutes' walk from two Tube stations: Mile End (on the Hammersmith and City, District and Central lines) and Stepney Green (Hammersmith and City and District lines). Several bus routes stop right outside campus on Mile End Road. The nearest Tube station to our Whitechapel buildings is Whitechapel, also on the Hammersmith and City and District lines. On either campus, you're just a short journey away from Oxford Circus, Leicester Square, King's Cross Station, and the rest of London's amazing sights.

If you're going abroad, London City Airport is just over 30 minutes' away on public transport.

## “What blows my mind is how connected London is!

It takes only four hours to get to Scotland, which is just so efficient. The Eurostar can also get you to multiple destinations within Europe in a couple of hours, so it's actually probably quicker to go to Paris than it is to go to Scotland!”

**Mat Robathan**

## “There are countless cycleways

that make it easier and safer to cycle to, from, and between our campuses. Cycling is great for your physical and mental health, reduces your carbon footprint and means you don't have to pay for public transport!”

**Jack Jukes**



## “The Tube is really convenient.

It's really quick and makes it easy to get around London. Also, being a student gives you access to a Railcard which can make traveling even cheaper!”

**Cameron Storey**

## “There's Canary Wharf, there's Shoreditch,

we're 30 minutes from Oxford Street and we have three different Tube services right here.”

**Shamima Akter**

# Terms and conditions

## 1. Rules and regulations

The offer of, and acceptance of, a place at Queen Mary is made on the understanding that you undertake to observe the terms and conditions of our Academic Regulations and related policies. These cover, among other things, payment of fees, attendance at classes, submission of work, attendance at examinations, student discipline, complaints procedure, freedom of speech and equal opportunities policies. To read the Academic Regulations and related policies, visit [arcs.qmul.ac.uk/policy](https://arcs.qmul.ac.uk/policy)

## 2. Changes to our programmes

Queen Mary will aim to deliver your programme so that it closely matches the way in which it has been described to you by Queen Mary in print, online, and/or in person. However, it is important to realise that in some circumstances we may change aspects of your programme. For example, staff changes, resource limitations and factors such as a change in the law or the level of demand for a particular programme or module may result in Queen Mary having to withdraw or change aspects of the programmes and/or student services described in this prospectus. In the unlikely event that we discontinue a programme of study, or change it significantly before it begins, we will inform applicants holding an offer of a place at the earliest opportunity and will endeavour to offer a suitable alternative programme at Queen Mary. We will also ensure that these changes are reflected on our website as soon as possible.

## 3. Liability for damage to person or property

Queen Mary does not accept responsibility or liability for any damage to students' property, the transfer of computer viruses to students' equipment, or personal injury to students caused by the misuse or unauthorised use of Queen Mary equipment, or owing to students not taking due care while on Queen Mary premises, or engaged in Queen Mary activities.

## 4. Accuracy of information in this prospectus

Queen Mary has made reasonable efforts to ensure that the information provided in this prospectus is both helpful and accurate at the time of going to press. However, this information is subject to change over time. For this reason, it is important that you check the website for the most up-to-date information ([qmul.ac.uk](https://qmul.ac.uk)) or contact us using the details contained within the document. Applicants are strongly advised to check the Queen Mary Course Finder for up-to-date entry requirements before submitting their UCAS application

[qmul.ac.uk/undergraduate/coursefinder](https://qmul.ac.uk/undergraduate/coursefinder)

Read our terms and conditions in full at [qmul.ac.uk/prospective/termsandconditions](https://qmul.ac.uk/prospective/termsandconditions)


## 5. Graduate destinations

All information on graduate destinations have been reported by our graduates to their school or institute after graduation. These sections of the prospectus relate mainly to our graduates from 2016 to 2020.

This prospectus was manufactured using Lumi Silk sourced from an ISO 14001 certified mill, where the pulp was bleached using an Elemental Chlorine Free (ECF) process. The materials followed a Chain-of-Custody scheme, ensuring traceability back to a responsibly managed forest.







“That sense of community is fantastic. I’m not sure I would’ve got it at any other university.”

**Sahil Karra, second-year BA Politics**

**We believe that everyone could be the one  
that makes a difference. We are proud to be part of  
the Russell Group, an association of 24 world-leading  
research-intensive universities in the UK.**

**We believe passionately that the more  
diverse our students are, the more powerful  
our ideas become.**



**Queen Mary**  
University of London

**RUSSELL  
GROUP**