



Postgraduate Prospectus | 2022

# A global university

At Queen Mary, you get the safety and security of campus life, while living in one of the most exciting, vibrant cities in the world.



“There’s so much to do, it is a world city, and so you have the world at your fingertips.”

**Talhah Atcha,**  
MSc Global Health,  
Law and Governance

# Contents

## About Queen Mary

Why Queen Mary?	4
Diversity	6
Living in London	8
How to find us	10
Campus life	12
Accommodation	14
Careers	16
International students	20
Facilities	22
Student support	28
Student finance and funding	32

## Humanities and Social Sciences

Law	36
Business and Management	38
English and Drama	40
Economics and Finance	44
Literature, Languages, Linguistics and Film	46
Politics and International Relations	46
Geography	48
History	50

## Science and Engineering

Physical and Chemical Sciences	52
Mathematical Sciences	54
Engineering and Materials Science	56
Biological and Behavioural Sciences	58
Computing, Data Science and Electronic Engineering	60

## Medicine and Dentistry

Barts Cancer Institute	62
Blizard Institute	64
Dentistry	66
Institute of Health Sciences Education	68
William Harvey Research Institute	70
Wolfson Institute of Population Health	72

## Find out more

PhD study	74
Application and deadlines	76

## Our courses by subject

Terms and conditions	86
----------------------	----

# Why Queen Mary?

**Welcome to Queen Mary University of London, a world-leading Russell Group university that stands out from the crowd. Through research and academic excellence, we support our diverse communities of staff and students to achieve the previously unthinkable.**

## **Leading through research**

At Queen Mary, world-class research and innovation bring our postgraduate programmes to life. We are one of the UK's top research-intensive universities, a place where you'll be taught by world-leading academics in an exciting, nurturing and inclusive environment.

## **Russell Group**

Queen Mary is a member of the Russell Group, the leading 24 universities in the UK. Membership in this elite group demonstrates our commitment to delivering world-leading research, teaching and learning.

## **Our past and present**

We have a proud history that dates back to 1785 and beyond, with each of our four historic founding institutions (St Bartholomew's Hospital Medical College, London Hospital Medical College, Westfield College and Queen Mary College) established to provide "hope and opportunity" to under-represented

members of society. The aim was, and still is, to be a place where anyone can succeed.

Today, Queen Mary is a global university that remains true to its founders' vision. We nurture a diversity of talent through an outstanding education, while putting our community's wellbeing first.

## **Life-changing research and collaboration**

Our research doesn't just inform our teaching. We work closely with industry, government, business, communities and charities around the world to ensure its impact is felt from the communities of East London to the favelas of Rio de Janeiro.

Queen Mary was ranked fifth in the UK for the quality of research outputs (4\* and 3\*) in the Research Excellence Framework (latest REF, 2014). We are 19th in the UK and 117th internationally in the 2022 QS World Universities Rankings.

## **What we offer**

We offer a wide range of full-time and part-time programmes in the humanities and social sciences, science and engineering, and medicine and dentistry.

We will offer you the best of in-person and online teaching, and a full extra-curricular programme to ensure you get the very best educational and social experience from the first day you join us. Our campuses are Covid-safe, and in the event that Covid restrictions are ever re-introduced, we can adjust our education accordingly.

Visit our course finder for an up-to-date list of available postgraduate courses  
[qmul.ac.uk/coursefinder](https://qmul.ac.uk/coursefinder)

# Diversity



**Our community of staff and students are drawn from over 160 nationalities, making Queen Mary one of the most diverse universities in the world. We believe that diversity of thought leads to truly original ideas—and supports groundbreaking and exciting academic work and collaborations. This will make your experience vibrant, dynamic and truly global.**

#### **A global education**

Queen Mary has one of the highest scores for International Faculty and International Students (QS World Rankings 2022), cementing our position as a top global university.

We are proud to be a London university with thriving communities in China, Malta, Paris, Piraeus and Singapore. See [qmul.ac.uk/about/howtofindus](https://qmul.ac.uk/about/howtofindus)

Inclusion is one of our core values at Queen Mary, and is part of what makes us so unique. You'll get to know staff and students from a range of backgrounds, nationalities and cultures who will challenge you academically, stimulate your curiosity and broaden your perspective. Many will become friends, colleagues and mentors.

You will study alongside people from all over the world, forming friendships and connections with colleagues and mentors.

# Living in London



**Take your place in London, one of the best cities in the world. The city brings together the very best of the world's culture, innovation, history and diversity. London is the political, financial and cultural heart of the UK. You'll get a world-class education while enjoying the benefits of studying in a truly global capital city.**

It's a place where over 300 languages are spoken across over 200 nationalities, where you'll meet people from both around the corner and the other side of the world.

#### **London culture**

Culture and London go hand-in-hand. Explore and enjoy UNESCO world heritage sites, the very best of the world's theatre, live comedy, world-famous galleries and museums, historic libraries, hundreds of book shops, beautiful parks, festivals, independent cinemas, nightclubs and world cuisine all on your doorstep.

#### **Local to Queen Mary**

International and energetic, East London is home to bustling food markets, pop-up restaurants, vibrant nightlife, independent shops and beautiful parks. Tech City, Canary Wharf, the Queen Elizabeth Olympic Park and the creative hubs of Shoreditch and Hackney are within walking or cycling distance, or a short bus journey away.

#### **Travel**

London has excellent links to other parts of the UK, Europe and the rest of the world. The rest of the city is easily accessible by bicycle or by public transport from any of our London campuses, so you can be in Central London in 20 minutes or less.

#### **Safety**

Queen Mary offers a secure campus environment in the heart of London. London's ranked among the top 20 safest cities in the world, so you can explore the city with peace of mind.

When you join us you'll also have access to our Student Services team, who can help you settle in and are on hand to address any individual concerns.

Visit [welfare.qmul.ac.uk](https://welfare.qmul.ac.uk) for more information.

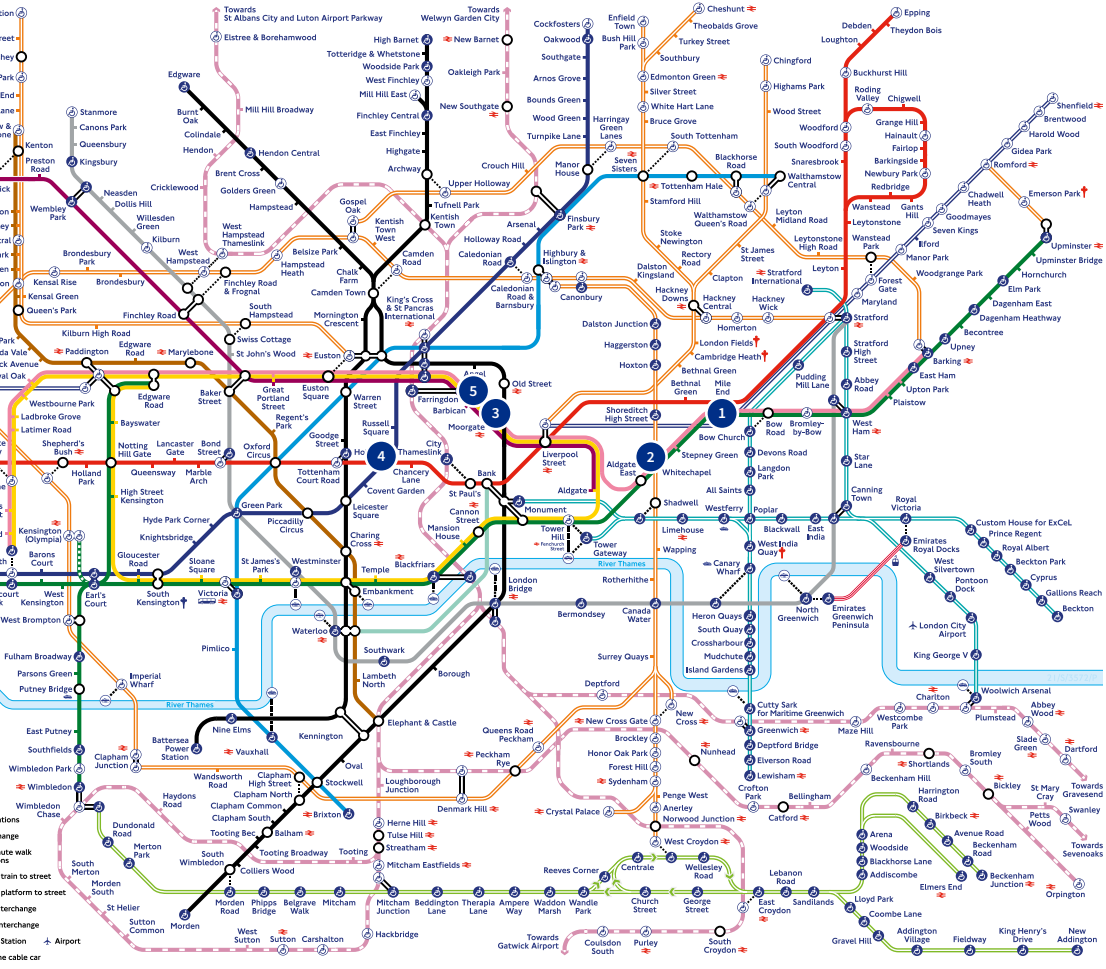
#### **Cost of living**

Living in London might not be as expensive as you think, especially as Queen Mary provides a wide variety of affordable accommodation. Read page 70 for the financial support, including scholarships, that's available to you.

See **page 10** for a map of where our campuses are based in relation to London Underground stations.

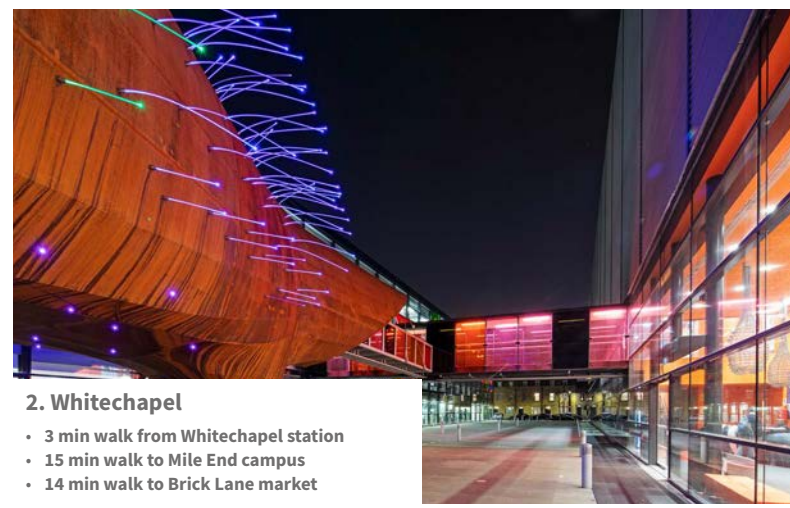
Visit [qmul.ac.uk/study/the-london-advantage](https://qmul.ac.uk/study/the-london-advantage) for more information on studying and living in London.

# How to find us



**1. Mile End campus**

- 5 min walk from Stepney Green station
- 5 min walk to Mile End park and Regent's Canal



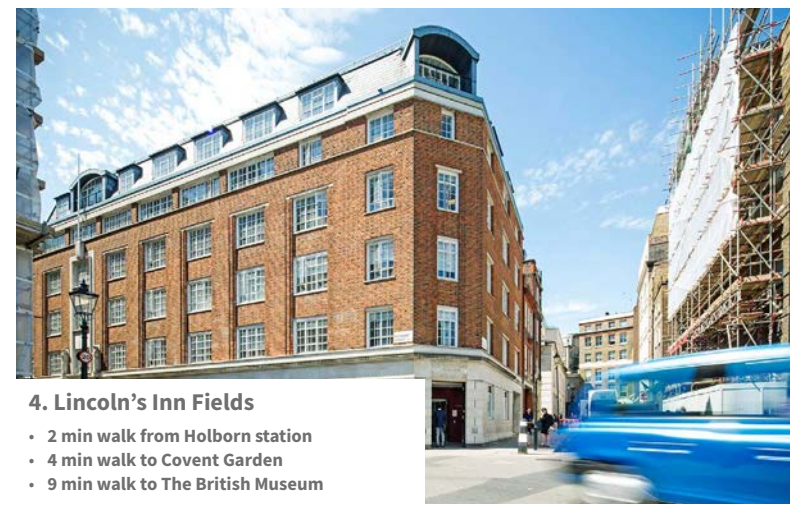
**2. Whitechapel**

- 3 min walk from Whitechapel station
- 15 min walk to Mile End campus
- 14 min walk to Brick Lane market



**3. Charterhouse Square**

- 2 min walk from Barbican station
- 1 min walk to Barbican Centre
- 12 min walk to St. Paul's Cathedral



**4. Lincoln's Inn Fields**

- 2 min walk from Holborn station
- 4 min walk to Covent Garden
- 9 min walk to The British Museum



**5. West Smithfield**

- 6 min walk from Farringdon station
- 13 min walk to the Thames
- 17 min walk to Exmouth Market

# Campus life



**Enjoy the security and community of campus living while thriving in the bustle of London life. Make the most of five well-connected campuses across East and Central London, each with academic facilities and social spaces designed for you to get the most from your Queen Mary experience.**

## **Mile End**

Set alongside the historic Regent's Canal, Mile End is home to our humanities and social sciences, and science and engineering faculties. Most postgraduate students studying these subjects are based here. The campus has a 24-hour library, cafés, a restaurant, bar, gym, shops, an on-site bank and plenty of green space to enjoy.

## **Whitechapel**

Next to the Royal London Hospital is our Whitechapel campus, home to the Blizard Institute, state-of-the-art labs and a beautiful gothic medical library. Many of our postgraduate taught and postgraduate research medicine and dentistry students are based here. Whitechapel has a strong sense of community, and is famous for its street markets, culture and world food. The Whitechapel campus is a 20-minute walk from Mile End.

## **West Smithfield**

Our West Smithfield campus in Farringdon is where some of our postgraduate taught medical students are based. It includes St Bartholomew's Hospital and the West Smithfield Medical Library, and houses some of Queen Mary's cardiovascular, cancer, epidemiology and public health research facilities.

## **Charterhouse Square**

Located in one of London's green, historic pockets, our Charterhouse Square campus is for postgraduate taught and postgraduate research medical students. It's home to the Barts Cancer Institute, the William Harvey Research Institute and the Wolfson Institute of Preventive Medicine. The Barbican Arts Centre and the Museum of London are close by.

## **Lincoln's Inn Fields**

Moments from the cafés, restaurants and shops of Covent Garden, our Lincoln's Inn Field campus is in Holborn, the historic legal centre of London. Most of our postgraduate law students are based here, with the beating heart of London accessible on foot.

Discover more about our campuses at [qmul.ac.uk/study/our-campuses](https://qmul.ac.uk/study/our-campuses)

# Accommodation



**At Queen Mary, we can offer you secure accommodation close to our campuses. Our residences for postgraduates are a popular, competitively-priced choice.**

We can offer rooms in shared flats or studios, all of which are self-catering, and located a short walk or bike ride away from our campuses. We also offer family accommodation and rooms designed for people with disabilities.

We also provide our incoming students support in seeking alternative accommodation.

We know how important it is to find the right place to live, and our accommodation team are ready to help support and guide you.

### **Living near campus**

We have dedicated postgraduate accommodation at **Aspire Point** in Stratford. Just a short bike ride (or 20 minutes on the bus) from our Mile End campus, Aspire Point provides affordable living and study space with glorious views over London and the Queen Elizabeth Olympic Park.

With en-suite rooms, studios and rooms with shared bathrooms, there's accommodation suited to every need and budget.

**Eleanor Rosa House** is a brand new and intercollegiate hall of residence located in Stratford, home of the Queen Elizabeth Olympic Park. That means you'll be just one tube stop, or a short bicycle ride, away from Queen Mary's Mile End campus. Eleanor Rosa House has en-suite rooms available to Queen Mary students, and offers the opportunity to meet other University of London students.

Postgraduate accommodation is available in **Sherren House**, run by our dedicated housing partner in Stepney Green, which offers 215 single en-suite rooms. Students are less than a 10-minute walk from the Mile End campus and just a short journey to the excitement of Brick Lane and Shoreditch.

**Stocks Court** is a five-minute walk from our Mile End campus and provides excellent value for money across its 128 single rooms.

We also offer accommodation for our Medicine and Dentistry students at our Whitechapel and Charterhouse campuses. This means you can live with people on a similar course, close to our clinical facilities.

Once you have received an offer for your programme you will be able to apply for accommodation via your applicant portal.

More information can be found at  
[qmul.ac.uk/residences](https://qmul.ac.uk/residences)



# Careers



**Professional career support and guidance is available from your first day at Queen Mary. Our Careers and Enterprise team will work with you to develop the skills and experience you need to stand out in a competitive job market—or start your own business.**

The comprehensive services offered by our careers team are tailored to your goals and can be applied to any step in your professional development. Through the Careers and Enterprise team, you'll have access to a number of career-advancing opportunities, including networking events, careers fairs, sector tasters, internships and our online vacancy board.

Our London location and excellent industry links mean you'll be in a prime position to take advantage of the opportunities a world city has to offer, equipped with the right skills, experience and confidence. We will continue to support you in your career when you leave Queen Mary.

### Careers support services

We'll help you transition into your chosen career or further study through services that include:

- One-to-one appointments to help you with your career direction, give feedback on job applications, offer insight into the job market and prepare you for interviews
- Workshops to support your career development and job hunting
- Employer events attracting recruiters and alumni from a rich range of sectors
- Support for finding internships and part-time jobs while you study
- Specialist careers consultants to support PhD students through appointments, events and workshops

### After you graduate

Our support goes beyond graduation. Whether you're planning your next career move or looking into further study, you can access our Careers and Enterprise support for two years after leaving Queen Mary.

- Have free one-to-one appointments in person, over the phone or via video call
- Attend our employer events
- Use our online psychometric testing and mock-interview software
- Access thousands of vacancies through our jobs board

### Enterprise support

Each year, Queen Mary offers a number of generous funding opportunities to support students in bringing business, start-up and social enterprise ideas to life. In 2020/2021 we awarded £50,000 in seed funding to help students start new or grow existing businesses and to help current businesses through the pandemic.

We support student entrepreneurs through:

- Funding awards (of £500, £3,000 or £10,000)
- One-to-one advice and workshops
- QIncubator: an eight-week entrepreneur training programme
- QHack: three-day entrepreneur bootcamp

- All designed to support new and growing businesses in scaling up their ventures
- Dedicated blog for answering frequently asked questions

In 2020/21, we organised work experience for over 1,000 of our students across a range of sectors and roles—from research internships to consultancy for start-ups.

### Support for international students

You can tailor our year-round services to your needs. Connect with prospective employers and make valuable contacts at careers' events, attend talks on finding graduate work, enhance your CV by learning new skills, use our international jobs database and access guides on building a career in specific markets.

Find out more about how we can support your career by visiting [careers.qmul.ac.uk](https://careers.qmul.ac.uk)

Overall,  
**93%**  
of all our graduates are in employment or further study<sup>1</sup>

Of this,  
**82%**  
are in highly skilled jobs<sup>2</sup>

**18th**  
in the UK for universities targeted by the largest number of top employers in 2020-2021<sup>2</sup>

**95%**  
of our postgraduate and PhD graduates are in employment or further study within six months of graduating<sup>1</sup>

<sup>1</sup> Graduates Outcomes Survey 2020  
<sup>2</sup> The Graduate Market in 2021

# International students



**We welcome students from across the world into our global community each year. Ranked as one of the 20 most diverse universities in the world, you'll be joining a community of people from all backgrounds and nationalities.**

Wherever you are, we'll support you every step of the way. We can help with the application process, accommodation, funding and visa guidance. Once your course has started, our staff and students will make sure you get the most out of your experience at Queen Mary.

#### **Before you apply**

We provide in-country meetings, admissions advice, online chat sessions with current students and staff and frequent webinars.

#### **Before you arrive**

We offer pre-departure briefings, an airport collection service, frequent webinars and our International Welcome Programme. We also offer advice about accommodation, scholarships, funding, Summer School, visas and English language requirements.

#### **During your studies**

As well as academic support, you will have constant access to support about accommodation, studying, careers and

funding throughout the year, as well as all our wellbeing services.

#### **Pre-masters graduate diplomas**

Our pre-masters programmes offer bespoke preparation for masters-level study for international and EU students who don't meet the academic or language requirements for masters study, or those who want to switch disciplines.

Our diplomas give you the academic, language and study tools needed for a postgraduate degree, including subject-specific knowledge, research, academic writing and speaking, and study skills. We offer two pre-masters programmes: Graduate Diploma in Economics and Finance and the Graduate Diploma in Humanities and Social Sciences.

#### **Pre-sessional language programmes**

Our pre-sessional programmes are for international and EU students who want to improve their English language and academic study skills before enrolling into their chosen postgraduate degree. These programmes run over the summer, and offer a stimulating learning experience in preparation for further study, with our students reporting an over 90 per cent level of satisfaction with their course.

For more information, visit  
[qmul.ac.uk/premasters](https://qmul.ac.uk/premasters)

For more information, visit  
[qmul.ac.uk/language](https://qmul.ac.uk/language)

# Facilities



**At Queen Mary we offer exceptional academic facilities across all our teaching and learning facilities, including our labs, libraries, lecture theatres, IT rooms and multimedia learning resources.**

We have study spaces available to support all your needs, including computer rooms, quiet study space and space for group work. Our Mile End library is open 24 hours a day during term time.

#### **Investing in your success**

Our investment in facilities underpins the world-class teaching and research you'll be part of at Queen Mary.

In 2017 we invested £39m in our Graduate Centre, which provides state-of-the-art study and teaching areas for our postgraduate community.

We've invested more than £250m in new facilities in the past 15 years. These include some of the largest open-plan laboratories in Europe in the Blizzard Building.

We are home to the UK's first new dental facility in 40 years, with a £78m new facility within the Royal London Hospital equipped with cutting-edge technology to provide a world-leading education.



Queen Mary has well-established links with leading London institutions like the Natural History Museum and Kew Gardens, offering our Biological Sciences students opportunities unique to London.



The School of Biological and Behavioural Sciences recently benefited from a £4.5m refurbishment, building brand new laboratories and investing over £1m in state-of-the-art equipment.



The School of Engineering and Materials Science attracts some of the brightest minds from across the country, and the world. We are ranked seventh in the UK for our general engineering research (REF 2014).



Our Drama students benefit from our extensive professional connections in one of the world's great theatre cities. We work closely with industry partners in London, including the National Theatre and Battersea Arts Centre.

Our School of Mathematical Sciences has been transformed after an £18m project to provide an inspiring and collaborative space for staff and students.

Recent investment in the School of Biological and Behavioural Sciences has seen new research laboratories built and state-of-the-art equipment installed to help drive our world-class teaching and research.

### Libraries

Following a £1.5m refurbishment, our 24-hour library in Mile End allows for even more study and computer spaces. Medical and dental students can make use of the specialist medical libraries at Whitechapel, an atmospheric and beautiful neo-gothic building, and West Smithfield (site of Barts Health NHS Trust). You'll also have access to all of the University of London libraries, such as Senate House in Bloomsbury, and the libraries at UCL and King's College London.

### Students' Union

Queen Mary Students' Union is a student-led organisation, and you automatically become a member when you join Queen Mary. The Students' Union is here to support you during your time at university and to make sure your voice is heard and views represented through elected student representatives. We offer hundreds of opportunities for you to get involved in, where you can make friends, spark new interests, gain additional skills and really get the most out of your Queen Mary experience.

### What we provide

With over 200 diverse Societies and Sports Clubs, a volunteering service and different sports programmes, the Students' Union offers something to suit every interest and goal. We also offer a packed programme of on-campus, London-based and online events throughout the year, alongside campaigns and projects focused on improving the Queen Mary student experience.

Our dedicated postgraduate representatives are elected by students and are here to represent and support you during your time at Queen Mary. You can also get involved in our dedicated programme of events and activities for the postgraduate student community.

### Students' Union Support

The Students' Union is also here to help you, point you in the right direction and provide you with support during your time at university through comprehensive academic, pastoral and wellbeing support including:

- Academic Advice Service
- Faith spaces
- Ongoing wellbeing support and campaigns
- Transferrable skills training
- Careers and employability events

We also run liberation months throughout the year, including Black History Month, LGBTQA+ History Month and Asian Heritage Month, and assist students in running their own campaigns.

### Leisure facilities

The Students' Union also runs a variety of on-campus spaces including social spaces, cafés, shops and bars where you can meet up with friends, take a break or grab a bite to eat after a lecture. The Students' Union is a registered charity, so every penny of profit goes straight back to you through our activities, campaigns and services.

### Sport

Our Sport and Fitness Centre, Qmotion, is located on our Mile End campus and offers a fully equipped gym, a range of exercise classes and a sports hall. The Students' Union runs over 60 sports clubs, with matches taking place at Queen Mary's sports ground in Chislehurst. Social leagues are also available for those keen to take part in sport without the commitment.

### What's on offer?

- Over 150 societies
- Over 60 sports clubs
- Students' Union Hub social spaces
- Multi-faith centre for prayer and contemplation
- On-campus Sport and Fitness Centre
- On-campus shops, bars and cafés
- Media suite
- Regular events and activities
- Get Active turn-up-and-play sports
- Social leagues
- Elite Athlete programme
- Volunteering Service offering one-off and long-term opportunities
- Sustainability programme

For more information, visit  
[qmsu.org](https://qmsu.org)



# Student support



**Community is at the heart of everything we do at Queen Mary, and the welfare of our communities is our highest priority. You can feel confident that your health, safety and wellbeing comes first, and that your academic and wellbeing needs will be met through our dedicated support services.**

## **Supporting your study**

We want you to get the most out of your time at Queen Mary. To ensure you enjoy a learning experience that positively impacts your future, every School and Institute at Queen Mary has a dedicated Student Support Contact who will support you in your studies.

Within your academic School or Institute, there is a team of people who will help you to achieve your goals academically and who can support you with any personal issues.

Outside your School or Institute, Library Services run academic skills workshops for students at all levels, as well as offering one-to-one support and bespoke skills guides.

The Academic Advice Service run by the Queen Mary Students' Union gives confidential advice and representation on a range of academic issues. Our libraries and IT services are vital hubs of support, providing a gateway to specialist learning resources and study space.

We also have dedicated support if you're a refugee, have been in local authority care, are estranged from your family or are a carer. You can get in touch with us before you've applied to Queen Mary if you want support with planning your finances, the logistics of studying abroad and the practical aspects of student life.

Learn more at [qmul.ac.uk/postgraduate/support-for-students](https://qmul.ac.uk/postgraduate/support-for-students)

### Supporting wellbeing

We offer a range of services and activities to help you maintain all aspects of your wellbeing during your time with us.

Queen Mary's Disability and Dyslexia Service ([dds.qmul.ac.uk](https://www.qmul.ac.uk/dds)) offers support for all students with disabilities, specific learning differences (e.g. dyslexia) and mental health diagnoses from application through to graduation. The service offers students advice and guidance with securing access to funding streams like the Disabled Student's Allowance, as well as ensuring that our students have access to the reasonable adjustments to which they are entitled.

As well as adapting to the demands of postgraduate study, you will also be managing the challenges of day-to-day life. Finances, new and existing responsibilities and settling in to a new environment must all be juggled alongside your studies.

To ensure you maintain a strong sense of wellbeing, there are support services open to you throughout the year.

The Advice and Counselling Service offers a range of free and confidential services to help all Queen Mary students with financial, welfare, legal and also emotional and psychological issues. This includes advice on visa and immigration issues.

Our Advice and Counselling Service ([welfare.qmul.ac.uk](https://www.welfare.qmul.ac.uk)) provides emotional support through one-to-one appointments with our counsellors and mental health advisers. This service is available and accessible to you whether you are studying with us in person or remotely.

Our specialist Welfare Advisers ([qmul.ac.uk/pg-funding](https://www.qmul.ac.uk/pg-funding)) can help you identify any funding you may be eligible for. They can provide information on the Student Finance application process, tuition fees

and living costs, bursaries and scholarships, and what to do if you are having financial difficulties.

Our award-winning Legal Advice Centre ([lac.qmul.ac.uk](https://www.lac.qmul.ac.uk)) is open to students, staff and members of the local community. It provides free, confidential legal advice by appointment.

### Health and safety

Every member of our community deserves to work and learn in an environment where their health and safety are front and centre. At Queen Mary, this is what we deliver. In response to global health challenges, we have adapted our campuses so appropriate safety measures can be taken in line with government advice.

### Student health

There is a free, easily-accessible Student Health Service available on our Mile End campus that provides a complete range of medical services including GP appointments, immunisations,

sexual health advice and screening, specialist clinics and psychological counselling.

We encourage you to register here if you're based within the borough of Tower Hamlets (E1, E2, E3 and E14), and are eligible to do so. You can do this online or at the Student Health Service. We can provide a list of local doctors if you are based outside of Tower Hamlets and you wish to register with a doctor close to where you live.

### Occupational health

The Occupational Health Department focuses on the prevention of ill health related to study, working particularly with students from the School of Medicine and Dentistry as the nature of their work brings them into contact with patients.

Underpinning our services is the maintenance of our facilities and spaces. These are monitored and cleaned regularly to ensure your safety and security.

### Immigration advice

Welfare Advisers within the Advice and Counselling Service are trained to provide immigration advice to current students, applicants, recent graduates and their family members. They have detailed information and guidance on their website, including guidance about Tier 4, leaving and re-entering the UK, lost, stolen or expired passports of biometric residence permits, family members and money. You can also contact them for personalised advice.

Read **page 32** for more on funding and financial support.

For more information, please visit [welfare.qmul.ac.uk](https://www.welfare.qmul.ac.uk)





# Student finance and funding

**Whatever your financial situation, we want you to fulfil your potential. Queen Mary offers a number of options to help you financially – including helping you to access external funding, in addition to a range of scholarships for academically excellent students.**

## Tuition fees

Tuition fees for UK, EU\* and international students are listed on each course's webpage.

For more information, please visit [qmul.ac.uk/coursefinder](https://qmul.ac.uk/coursefinder) and search for the course you're interested in.

## Accommodation

We offer postgraduate students a range of housing options to suit different budgets, including single rooms, en suites, couple and family accommodation and a number of studios.

Residential fees include all energy and water costs, the cleaning of communal areas within the residences (including kitchens and shared bathrooms), Wi-Fi, and personal possessions insurance.

For a breakdown of costs, please visit [qmul.ac.uk/residences/college/fees](https://qmul.ac.uk/residences/college/fees)

## Managing your money

We can help you manage your budget. If you're calculating your costs, we offer detailed guidance on budgeting and money management at [welfare.qmul.ac.uk/money/planning-a-budget-and-managing-money](https://welfare.qmul.ac.uk/money/planning-a-budget-and-managing-money)

## Applying for financial assistance

Queen Mary offers a number of funding packages, including external funding, across a range of subjects.

For more information, including how to apply, please visit [qmul.ac.uk/masters-funding](https://qmul.ac.uk/masters-funding)

## International students

Our partnerships with external funding organisations such as Chevening, the Commonwealth Scholarship Commission and numerous governments around the world mean that we can offer support to many of our international students through scholarships and funding.

## Postgraduate Masters Loan

The Government's Postgraduate Masters Loan offers up to £11,570 per programme for eligible students for courses starting in the 2021/22 academic year. International students are not eligible for this loan. The loan is available for any full or part-time taught masters programme as well as Masters of Research (MRes), though you won't normally be eligible if you already hold a masters degree or higher-level qualification. You can find out more information including eligibility criteria and how to apply in our Postgraduate Funding guide, which also explains possible other funding options depending on your circumstances [qmul.ac.uk/pg-funding](https://qmul.ac.uk/pg-funding)

## Postgraduate Doctoral Loan

Eligible students enrolling in 2021/22 can borrow up to £27,265 for the whole course, with the Government's Doctoral Loan. It is available for full or part-time Doctoral degree courses including by distance learning. If you

already hold a doctoral degree, you won't normally be eligible for this loan and other eligibility criteria will also apply. You can find more details in our Postgraduate Funding guide, as well as information about other possible sources of funding [qmul.ac.uk/pg-funding](https://qmul.ac.uk/pg-funding)

## Further information

Find out more about how to apply, eligibility criteria and repayments for loans:

- The UK Government's website [gov.uk/funding-for-postgraduate-study](https://gov.uk/funding-for-postgraduate-study)
- Queen Mary's Postgraduate Funding advice guide [qmul.ac.uk/pg-funding](https://qmul.ac.uk/pg-funding)
- Queen Mary's Funding a Masters webpages [qmul.ac.uk/masters-funding](https://qmul.ac.uk/masters-funding)
- Queen Mary's Funding a PhD webpages [qmul.ac.uk/phd-funding](https://qmul.ac.uk/phd-funding)
- Queen Mary's scholarships webpage [qmul.ac.uk/scholarships](https://qmul.ac.uk/scholarships)
- Guidance on budgeting [qmul.ac.uk/budget](https://qmul.ac.uk/budget)

\*Students from the EU may fall into either the Home or Overseas fee category depending on their personal circumstances. Further details can be found here: [qmul.ac.uk/undergraduate/apply/policies/feestatus](https://qmul.ac.uk/undergraduate/apply/policies/feestatus)

# Subject listing



# Law



**We are proud of our reputation as a world-leading postgraduate law school, ranked number 30 in the world by the QS World University Rankings by subject (2020). Queen Mary's Centre for Commercial Law Studies, part of our School of Law, is located in London's historic legal centre at Lincoln's Inn Fields.**

The School of Law attracts a diverse student body from nearly a hundred countries who join us to study one of 20 LLM specialist programmes delivered in London, Paris and Singapore\*, as well as unique distance learning offerings.

Combining excellence in teaching and research across both commercial and non-commercial disciplines, we strive to be at the forefront of legal scholarship and law reform.

#### **Career progression**

Our mentoring programme matches our students with mentors from a range of legal professions, including current and former Lord Justices of Appeal, senior partners and legal professionals at leading firms, including Allen & Overy, Cooley LLP, eBay (UK) Ltd, The Walt Disney Company, Shell, Preiskel & Co, Promontory Financial Group and others.

Our graduates progress into careers in the UK and around the world, with a large number

working as solicitors, barristers, lawyers, legal associates or paralegals. Others move into finance, regulation, policy, compliance, consultancy, patents and trademarks.

#### **Our research and impact**

Through groundbreaking research and advocacy work, our experts help shape policies and practice nationally and internationally.

For example, our pioneering Cloud Legal Project (CLP) was launched in 2009 and undertakes research in complex areas of law and regulation that are essential to the successful development and use of cloud computing services. Its impact on industry has been huge. CPL's research covers a wide range of topics, including governance of cloud services, cloud contracts, blockchain technology, data protection and privacy in Africa, cloud robotics, taxation of cloud providers and services and the legal status of online digital assets.

\*Collaborative partnership with Singapore Management University



#### **Our alumni**

“My experience at the Centre of Commercial Law Studies has been decisive for my academic, professional and personal development. I have learned that any goal you set for yourself in life, as difficult and unattainable as it may seem, is possible if you have the discipline, perseverance and passion enough to work daily on it. On the other hand, I have understood that working as a team with great professionals you can achieve great things and be part of a great academic family, where diversity and open-mindedness are the essential characteristics and the main engine of growth and learning.”

“Being a member of the law school community is a great honour and a great responsibility. I am fully convinced that my classmates will be the future leaders in financial regulation in their respective countries, as well as in various international financial organisations, such as the IMF or the World Bank.”

**Karina Ley Chinguel Degregori, Banking and Finance Law LLM 2019,  
Senior Manager at Ernst & Young**

Visit [qmul.ac.uk/law](https://qmul.ac.uk/law)  
for more information

# Business and Management

**There are few areas of 21st century life that are not touched by business and management.**

A solid understanding of the key principles and practices are essential to those who manage our businesses, educational and political institutions now and in the future.

We are proud to be a distinctive business School that offers a range of innovative programmes across the business spectrum. At the School of Business and Management, our management education goes hand-in-hand with our research, which examines the increasingly important connections between management, organisation, business life and the contemporary world.

## Career progression

Our postgraduate students are sought after by a diverse range of employers. Recent postgraduates have progressed into careers such as:

- asset management
- chartered and certified accountants
- finance investment analysts and advisers
- management consultants
- marketing consultants
- business analysts
- entrepreneurs
- banking

In companies such as:

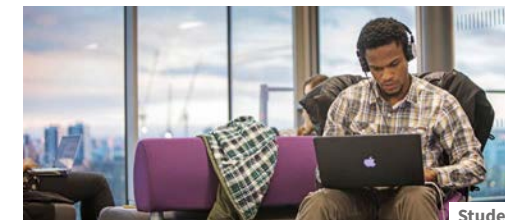
- Deloitte
- Ernst & Young
- Environmental Defense Fund
- KPMG
- Capco New York
- Photobox
- Bank of China
- IBM
- United Nations Development Programme

## Our research

Since it was founded, the School of Business and Management has produced research that has a significant positive social and economic impact. Our academics are members of the Centre of Research in Equality and Diversity, a prominent international group that is at the forefront of equality and diversity research. The Centre addresses issues including gender and sexuality in male-dominated professions and the implementation of the Equality Act 2010.

The School is also home to the Centre for Globalisation Research, which conducts research around the themes of political economy and macroeconomics; development, inequality and poverty; and business analytics, innovation and networks.

Our postgraduate programmes offer a structured route to exploring these key issues and connections. You will also develop a portfolio of valuable skills and enhance your career opportunities.



Student

Visit [qmul.ac.uk/busman](https://qmul.ac.uk/busman) for more information



## Our academics

Dr Suki Sian is Head of the Department of Accounting and Financial Management in the School of Business and Management and is the founder and Director of the Accounting & Accountability Research Group (AARG). AARG was founded to further scholarship in accountancy and to provide a platform for developing accounting-related research.

Describing her research, Dr Sian says “it has focused on areas such as gender and accountancy, accounting history and international accounting – surprisingly, accounting isn’t just about the numbers!”

**Dr Sian is a Chartered Accountant; prior to working in academia, worked as an accountant and auditor in practice.**

# English and Drama

**The School of English and Drama is a dynamic and inclusive learning environment, led by world-renowned academics, writers and practitioners who combine cutting-edge research and teaching with a commitment to community and social change.**

By challenging norms, championing marginalised voices, and exposing our students to a breadth of material, we improve lives and foster understanding of complex issues.

Our postgraduate courses offer access to academic specialists to help you discover or enhance your research interests in a supportive environment.

## Career progression

Our masters courses train critical thinkers, artists and writers, placing you at the forefront of critical theory and provides you with a wide range of academic and transferable skills. The experience cultivated on our courses are increasingly valued by employers in such sectors as secondary and higher education, creative industries, performing arts, arts management, digital media, journalism and publishing.

## Our research

Our large English department has a wide range of research areas with a particular focus on Eighteenth Century and Romanticism,

The Victorian Period, Modernism and Early Twentieth Century, Contemporary, Postcolonial and World Literatures, and Creative Writing.

In the most recent REF (2014), our Drama department was ranked first in the UK for the quality of our research. Our academics are experts in the fields of live art, socially applied performance, arts and mental health, and critical approaches to theatre.

## What makes our degrees so different

### MA English Literature

- This is a genuinely trans-historical course, providing in-depth coverage of many literary periods, genres, styles and genres
- You will learn from supportive experts in many different fields of English Literature
- You will also gain analytic, communication and research skills valuable for your career

### MA Theatre and Performance

- You will work with our internationally respected academic staff

- You will attend lectures, workshops, and mentoring sessions with visiting artists throughout your studies
- You will also see the latest in contemporary theatre, from warehouse raves to productions at international institutions like the Old Vic

### MA Live Art

- We are the first dedicated course specialising in live art

- Our tutors include world-renowned artists and experts like Martin O'Brien, Dominic Johnson and Julia Bardsley
- The course is delivered with our partners Live Art Development Agency

Visit [qmul.ac.uk/sed](http://qmul.ac.uk/sed) for more information



## Our alumni

"I'd summarise my time at Queen Mary as a culturally enriching and intellectually stimulating experience. The University has a great reputation and a London location alongside a progressive curriculum. The lecturers are highly knowledgeable and engaged with their subject - you have an enthusiastic expert for every module. A masters from a well-respected university will set my CV apart for jobs by showing my commitment and depth of knowledge."

**Lucretia McCarthy, MA English Literature 2018**

# Economics and Finance

**A centre of excellence in research and teaching, the School of Economics and Finance is home to a diverse community of faculty and students.**

We provide a solid foundation in economic and financial theory and practice, driven by research-led teaching from experts in the field. This ensures that you will be studying at the cutting edge of these disciplines, but also across a wide range of extracurricular School activities to enhance your learning experience.

#### **Our facilities**

As a student, you will have access to the same industry software and major statistical databases as real-life traders tracking the stock market and economists in government, think tanks and major consultancies, which will be of huge benefit to your future career. We are also one of a few UK universities with

a Trading & Behavioural Lab, containing Bloomberg trading terminals. In addition, you will have access to FXCM FX Trading Stations, Interactive Brokers Trader Workstations (used for finance data analysis and simulation) and free access to popular industry publications.

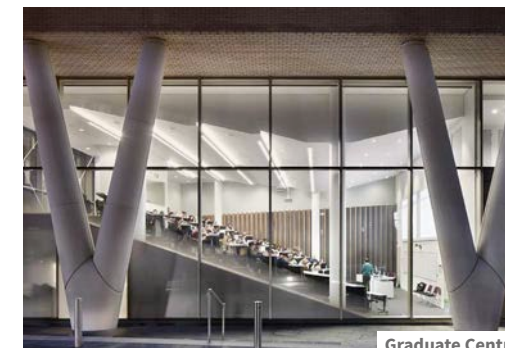
#### **Career progression**

Graduates of the School of Economics and Finance enter into a wide range of careers, including finance roles at large financial organisations including JP Morgan, Goldman Sachs, HSBC, Credit Suisse and Barclays. Professional services firms including EY, PwC, Deloitte and KPMG are also popular destinations for our graduating class. Roles

include Finance and Investment Analyst, Management Consultant, Economist, Financial Accounts Manager, Taxation Expert, Business Analyst and Chartered Accountant.

#### **Student enterprise**

Based in the School of Economics and Finance, the Queen Mary MSc Investment Fund is a student-managed investment fund that currently has responsibility for over £40,000 of investments. It is one of the only investment clubs of its kind in London, established for postgraduate students interested in obtaining relevant, practical work experience in trading and portfolio analysis.



Visit [qmul.ac.uk/sef](https://qmul.ac.uk/sef) for more information



#### **Our alumni**

“The content of the MSc Corporate Finance was exactly what I needed and aligned with my career path. Modules in the first semester were highly informative, and combined with the numerous module options for the second semester, I was excited to pursue my masters at Queen Mary University of London.”

**Anterleen Singh,  
MSc in Corporate Finance 2019**

# Languages, Linguistics and Film

**The School of Languages, Linguistics and Film consists of five diverse and interdependent departments. Our academic staff are world-leading experts whose research feeds directly into the teaching of our programmes. Our Linguistics department is ranked first in the UK for the quality of its research (REF 2014).**

Across our programmes you will develop a refined and rich skill set across a variety of subject matter. You will engage with cutting-edge approaches to research that is transforming the way we think about a given academic field.

## **Career progression**

Our international profile provides our students with the opportunity to work with a range of dynamic and global organisations, equipping them with the skills needed to go on to PhD research careers in other fields. Our degrees open up career opportunities across a wide range of professions.

Visit [qmul.ac.uk/sllf](http://qmul.ac.uk/sllf)  
for more information



## **Our academics**

“We use our internationally recognised research to inform our postgraduate teaching, providing masters students with the opportunity to engage with topical developments in their chosen field. The School’s different disciplines creates a vibrant multi- and interdisciplinary environment for research and teaching for all of our students.”

**Dr Hazel Pearson, Senior Lecturer in Linguistics and Convenor in MA Linguistics**



## **Our alumni**

“Throughout my time here I have most enjoyed the level of support provided, whether it be the opportunity to teach undergraduate students and so develop useful skills in this area, the variety of courses available at the Centre for Academic and Professional Development, or the various forums that are provided within the Film department to discuss and share research concepts and difficulties.”

**Dr Nick Jones, PhD Film Studies 2017, Lecturer in Film, Television and Digital Culture**



## **Our alumni**

“I liked the structure of the programme as it gave me the chance to tailor the course to meet my interests; but, fundamentally, I chose Queen Mary because of its staff. All of the professors and lecturers in the Linguistics department are world-renowned in their field.”

**Dr Melisa Rinaldi, MA Linguistics 2014, PhD 2018, Academic Developer at Centre for Excellence in Learning and Teaching (CELT)**



## **Our academics**

“Our unique approach to postgraduate studies here within the School of Languages, Linguistics and Film means our students are able to combine practical experience with a comprehensive knowledge of academic theory – it is a great place for postgraduate study.”

**Athena Mandis, Convenor in MA Film (pathways: Theory/ Directing Fiction/Documentary Practice)**

# Politics and International Relations

**Study in an outstanding and dynamic research environment, where you will help to tackle the critical issues facing politics today, locally and globally.**

The School of Politics and International Relations is home to leading active researchers with diverse interests. From the Middle East to British politics, their expertise is reflected in our cutting-edge teaching and across the breadth of our programmes.

Many of our programmes are flexible, giving you the opportunity to study full-time, part-time or through distance learning.

Our London location and proximity to Westminster puts you in the political heart of the UK and provides access to industry experts through our stimulating research

seminars and lectures. We also offer the opportunity to study in Paris through our International Relations (Paris) MA.

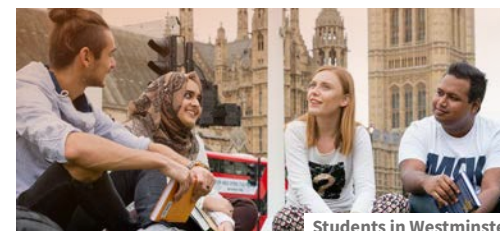
## **Career progression**

Our graduates go on to build successful careers in the private and public sector, and in national and international government organisations. Recent examples include Oxfam, Ernst & Young, BNP Paribas and The Center for Global Development.

As a student here, you'll also have the chance to be a part of the lively activities delivered by high-profile speakers at the Mile End Institute, a major

discussion forum which brings you closer to distinguished figures from the world of politics.

Tailored careers support is available to you via Careers Consultants and Student Employability Advisers, for career planning, application and CV writing, interview practice and more.



## **Our alumni**

“My studies at Queen Mary helped me in thinking about the kind of career I wanted to pursue, and provided me with the tools for critical analysis that are essential in work and in life. The International Business and Politics MSc helped me hone my research, argumentation and drafting skills and my understanding of the political economy of our societies. Beyond the usefulness for my career path as an Economic Analyst, it was a fascinating intellectual experience that changed the way I look at the world.”

**Paul Brans, MSc International Business and Politics**



## **Our academics**

Dr Sarah Wolff is a Senior Lecturer and Director of the prestigious Centre for European Research. Sarah's wealth of knowledge on EU politics and foreign policy has seen her take the lead on a fascinating project examining the future of UK-EU relations which she will do via policy briefs and regular public and digital events. Prior to joining Queen Mary, Sarah also gained considerable experience at public think tanks and other higher education institutions.

Visit [qmul.ac.uk/politics](https://qmul.ac.uk/politics) for more information



# Geography

**Geography has been taught at Queen Mary University of London since 1894, making us one of the longest-established Schools of Geography in the UK.**



Water and Environmental Management MSc students

We offer a range of masters programmes in geography and environmental science, drawing on a diverse collective expertise to tackle some of the greatest challenges of the 21st century, including international development, global health, migration and the sustainable management of aquatic environments.

### Career progression

Our graduates have established careers in the water and environment sector, within government agencies, charities and consultancies, undertaken PhDs and secured jobs with NGOs, development organisations, government departments and private companies. Graduate destinations include Affinity Water, Environment Agency, Rivers Trusts, Jacobs, Citizens Foundation, Fairtrade International and Engage Hub.

Visit [qmul.ac.uk/geog](https://qmul.ac.uk/geog) for more information



### Our alumni

“I chose to study at Queen Mary as the Geography department has a very good reputation for teaching and research. The course also appealed to me as it suited my particular interest in rivers, with a wide variety of topics covered within the course programme. I felt that each of the modules would be useful in some way for most jobs in the industry.

“My course gave me the ideal preparation for the job I am in now, as it covered all the aspects of river monitoring and management which I am expected to know for my job. It also gave me experience of report writing and time management skills, as well as valuable experience with conducting field work and laboratory analyses.”

**Anneka Johnson-Marshall, MSc Environmental Science: Integrated Management of Freshwater Environments 2015 (the predecessor to our MSc Water and Environmental Management), Asset Scientist at Affinity Water**



### Our academics

“The UN’s Sustainable Development Goals include a commitment to achieving ‘decent work for all women and men by 2030’. However, there is disagreement about what constitutes ‘decent work’ and how this varies between geographical regions.

“For my PhD project, I spent 12 months in Kampala, Uganda, to explore work in the informal economy. I discovered that people made a living through a diverse range of activities; including entrepreneurship, ‘hustling’ and social exchange. Rather than formal qualifications, people often relied upon social relationships to get by. These findings challenged the narrow idea of ‘work’ that I brought from the UK, as well as simplistic distinctions between ‘working time’ and ‘leisure time’; ‘work’ and ‘life’.

“My current research examines people’s work experiences in light of the global Covid-19 pandemic. How will it transform the geographies of work; for example, through the growing phenomenon of working from home? How will it impact informal workers around the world who rely upon access to public space in order to make a living? I am excited to explore these questions with our masters students.”

**Dr William Monteith, Lecturer in Geography**

# History

## The School of History was founded in 1912 to teach history and undertake world-class research.

More than a century later, we continue to combine these crucial elements of the historian's craft to develop our expertise about the past and understand our responsibilities for the present and future, through a diverse range of historical periods, figures and outlooks.

Our two postgraduate degree programmes allow you to specialise in either History or in the History of Political Thought, a programme which is taught collaboratively with UCL.

### Career progression

School of History graduates go on to build successful careers in both the private and

public sector, and in national and international organisations. Recent examples include:

- The BBC
- In publishing, at prestigious academic presses like Polity Press
- In finance, for example at BNP Paribas and Ernst & Young
- As political advisers in Westminster and the European Parliament
- Congressional campaigns in the US
- At NGOs like Global Witness
- At nonprofits such as Oxfam and The Centre for Global Development
- As researchers
- In teaching

With the skillset that a History programme can equip you with, many of our graduates have continued onto PhD programmes or are in academia—both in London and at a variety of other institutions from Oxford and Cambridge, to Berkeley and Yale. These include:

- Dr Signy Gutnick Allen, LSE Fellow in Political Theory and former Associate Lecturer in Political Theory at the University of York (MA History of Political Thought and Intellectual History)
- Dr Paul Sagar, Lecturer in Political Theory, King's College London (MA History of Political Thought and Intellectual History)

### Collaboratively teaching

Our MA History of Political Thought and Intellectual History is an intercollegiate University of London programme jointly administered and awarded by University

College London and Queen Mary University of London. The MA draws on the expertise of staff from the wider University of London, as well as leading academics at Queen Mary including Professor Quentin Skinner and Professor Gareth Stedman Jones. The programme offers advanced training in intellectual history, the history of political thought and the history of philosophy, spanning the period from the ancient world to the 21st century.

A unique focus on graduate employability Our MA History offers a unique internship option, giving invaluable real-world experience and transferable employability skills through a placement with one of our public history/heritage partners. All MA components, including the dissertation, are completed by early summer, facilitating entry into the summer job market.



Mile End campus

Visit [qmul.ac.uk/history](https://qmul.ac.uk/history) for more information

# Physical and Chemical Sciences

Throughout its 100-year history, the School of Physical and Chemical Sciences has brought people together to foster world-changing discoveries.



Saturn from Cassini spacecraft

From trailblazing work on the optimisation of drug delivery, to the international collaboration jointly responsible for the Nobel Prize-winning discovery of the Higgs boson, our accomplishments capture headlines and showcase the diversity of our expertise. Today, we continue to deliver academic excellence and remain at the forefront of some of the most exciting discoveries of the last century, such as the closest exoplanet to Earth, Proxima b, and the development of novel 'green' solutions in construction.

## Career progression

Our graduates have gone on to pursue PhD study at renowned institutions including Stony Brook University, New York and the University of Oxford. Those who choose a career in industry have progressed to positions including Data Scientist, Programming Analyst and Geophysicist in organisations including HSBC, Tech Alchemy and natural gas companies.

## Our research

Using data from NASA's Cassini spacecraft, an international team including researchers from Queen Mary found Saturn's moon Titan drifting a hundred times faster than previously understood—about 11 centimetres per year.

The revised rate of its drift suggests that the moon started out much closer to Saturn, and that the whole system expanded more quickly than originally believed. The findings also provide important confirmation of a new theory that explains and predicts how planets affect their moons' orbits, which could have implications for many other systems. The Astronomy Unit at Queen Mary was responsible for designing around 12 per cent of the more than 400,000 images taken by the Cassini spacecraft, which are continuing to uncover Saturn's secrets in studies like this. Cassini was an orbiter that observed Saturn



## Our academics

Professor Marina Resmini is an award-winning Professor of Materials Chemistry and an internationally-recognised voice in her field. She teaches on the Topics in Biological Chemistry module on the Chemical Research programme and additionally is a Trustee of the Royal Society of Chemistry and Chair of the Society's Inclusion and Diversity committee.

Professor Resmini's research focuses on the development of novel functional nanomaterials with potential applications at the physical and life sciences interface; in particular the use of chemical tools to confer special properties to materials for applications such as drug delivery systems, catalysts and sensors. Her research group have recently started working on the development of novel sensors for the detection and quantification of key components in coffee.

for more than 13 years before plunging into the planet's atmosphere in September 2017 once it had exhausted its fuel supply.

Visit [qmul.ac.uk/spcs](https://qmul.ac.uk/spcs) for more information

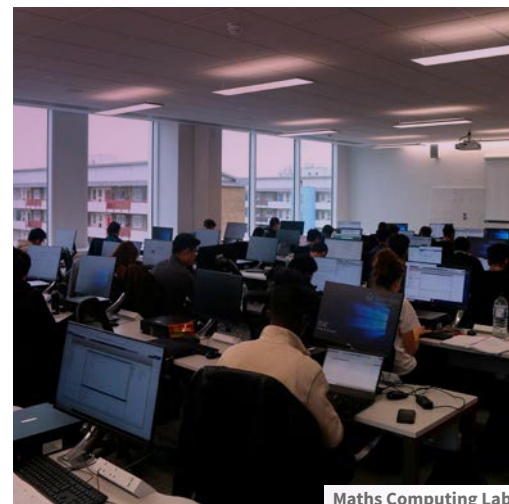
# Mathematical Sciences

**The School of Mathematical Sciences offers a diverse, international community of like-minded, intellectually curious students who use both logic and creativity to solve big 21st-century problems in a unique learning environment.**

It's a supportive community too. We work together to achieve goals, with our world leading academics here to inspire you and the opportunity to experience our award-winning Mathematics Society.

## Career progression

Our flexible and wide range of abstract and real-world programmes from MSc Mathematics to MSc Data Analytics and MSc Financial Mathematics means you can shape your own career path and join our esteemed alumni, who have gone on to work in research, and for prestigious organisations such as PwC, Santander, HM Revenue and Customs, Deutsche Bank and the NHS.



## Our facilities

With one of the largest academic staff in the UK and our new £18m Mathematics building with state-of-the-art facilities, teaching and study spaces, we invest in our students and provide the perfect environment for them to thrive in.

Our new building includes a new lecture theatre, high-quality teaching rooms, private and group study areas, a dedicated learning space for postgraduate students and a computing lab. The lab, fit with 42 computers, includes access to Bloomberg terminals, providing all our postgraduate students with the opportunity to take Bloomberg Market Concepts qualification. This software is used in the finance industry for the provision and analysis of financial market data and news.

Visit [qmul.ac.uk/maths](https://qmul.ac.uk/maths) for more information



## Our alumni

"I enjoy the fact that I can use so many different types of statistical software such as R, SAS, Excel and Python. It is a very challenging degree, but very rewarding as you will learn how to programme. Data Analysis is very sought after by employers in most fields now, not only because there is a gap in the market, but because data is everywhere. Everything is mostly computer-based, so knowing how to code will give you an edge."

**Mateusz Dawidowski, MSc Data Analytics**



## Our alumni

"I am able to gain a comprehensive understanding of how technology has transcended into the financial industry. Having started this degree with very little computer science knowledge, I have found the academic staff very supportive. We have a set of introductory modules which prepare us well for the more advanced modules."

**Amani Lahmami, MSc Financial Computing**

# Engineering and Materials Science

**The School of Engineering and Materials Science provides a foundation that enables engineers and material scientists to change lives.**



Dr Karin Hing with her stamp. Credit: Royal Mail

Our staff lead the way in fields ranging from sustainable energy to medical innovation: developing technology to better harness energy from waves, repairing foetal membrane defects to reduce preterm births and prevent early deaths of young babies, and pioneering new innovative biomaterials now improving the lives of 100,000s of patients worldwide.

## Career progression

Our programmes lead to rewarding careers that make a real difference to the world. Students have gone on to work for companies such as Siemens, Jaguar, Land Rover and Accenture, as well as on to pursue PhD study at Queen Mary, Stony Brook University, New York and the University of Oxford. Those who choose a career in industry have progressed to positions including Data Scientist, Programming Analyst and Geophysicist in organisations including HSBC, Tech Alchemy and natural gas companies.

## Our facilities

We have recently spent over £30m upgrading our laboratory spaces. The Internal Combustion (IC) lab focuses on engine performance testing and emissions. The IC lab also forms the base for the Queen Mary Formula student team and the Shell-Eco challenge team.

Our Chemical Engineering lab is modelled on state-of-the-art research facilities. Equipment includes a Rankine Cycle, a Hydrogen Fuel Cell to allow our students to take measurement on efficiency and an oil separation rig that separates used cooking oil to extract useable fuel (biodiesel) by centrifugal force.

The laboratory of the Centre for Advanced Robotics at Queen Mary is equipped with Robotics Arms, Mobile Platforms, Mechatronic and Control Systems, Artificial Intelligence, Swarm Robots, human-like Robotic Systems, Virtual Reality and Haptic Interfaces, and a human motion tracking system.

Our Aerospace lab houses a flight simulator with a cockpit, fully moving-base platform, virtual vision simulation for a range of visual cueing systems, image processing techniques for the flow field, advanced optical flow diagnostic tools and a unique wind tunnel for the study of laminar flow and its active control. External organisations such as Airbus and the US Airforce are users of these facilities.

The NanoVision Centre in Materials Engineering is a multi-million pound microscope unit, bringing together the latest imaging technologies to open up new avenues for cutting-edge research. This multidisciplinary facility is unparalleled in the UK—combining high resolution imaging with structural, chemical and mechanical analysis.

## Our research

Through research excellence, our academics have improved the outcomes for hundreds of patients worldwide. For example, Dr Karin Hing and her team at Queen Mary are engineering

materials that encourage bone growth when used in complex orthopaedic surgeries. In 2019, Royal Mail launched six stamps to mark 50 years of innovation in British engineering and Dr Hing's work was featured in one of the six stamps. Dr Hing's stamp depicts a close-up of the synthetic bone graft with an example of where bone grafts are commonly used to support bone regeneration in orthopaedic surgery.

Visit [qmul.ac.uk/sems](https://qmul.ac.uk/sems) for more information

# Biological and Behavioural Sciences

**The School of Biological and Behavioural Sciences combines the academic rigour of a leading department with a vibrant research culture, alongside a friendly and lively study environment.**

Teaching is influenced by world-class research and our staff regularly produce work in high impact journals like Nature, Science, Lancet Psychiatry and leading specialist journals.

#### Careers progression

Our graduates progress to varied careers in industry, conservation, environmental organisations and academia around the world. Examples include:

- Lead Generation Specialist, Illumina
- Communications Officer, European Geosciences Union
- Botanical Horticulturalist at Kew
- Lead Marine Adviser, Natural England

- Curator at the NHM
- Bioinformatics PhD Researcher at UCL Cancer Institute
- Assistant Technologist (Mental Health) at Barts Health Trust
- Biomedical Scientist at Max Planck Institute

#### Global fieldwork opportunities

Our inspiring fieldwork course portfolio offers students the chance to visit locations such as Borneo, Madagascar and Cape Verde. Our MSc student Oliver Gaskin (2019) said: “Our field trip to the Danum Valley Conservation Area in Borneo was an amazing experience. During our time there we witnessed an incredible

variety of wildlife, from waking to the sound of gibbons in the morning to hearing the shouting of cicadas every evening. In addition, the ecological sampling techniques we learned will undoubtedly be an asset for the future.”

#### Our facilities

A new £39m Graduate Centre provides quality teaching and learning spaces and our Fogg building recently underwent a £4.5m refurbishment. You’ll have access to analytical facilities for ecological or biomedical studies. These include our field station, the River Laboratory in Dorset; imaging facilities including confocal and EM microscopes; recently refurbished laboratories, including an Electroencephalography lab and Behavioural lab for psychologists; and

bioinformatics infrastructure, including a 1,800-core computing cluster.

#### Our research

We have particularly strong links with Kew, an institute with great research and the largest and most diverse collections of plants and fungi anywhere in the world. The projects prepare you for careers in specialist subjects and provide transferable skills essential for any professional career.

Such strong links underpin many projects. Our partners include Royal Botanic Gardens Kew, the Institute of Zoology and the Natural History Museum, environmental organisations such as the Environment Agency, conservation charities, DEFRA, and industry, such as GlaxoSmithKline, Proctor & Gamble, AstraZeneca and Syngenta.



#### Our alumni

“There is an excellent range of different project titles to choose from. My course gave me a solid foundation in taxonomy and spatial analysis. These skills have been incredibly useful and I have continued my research into a PhD on a similar subject. I am close to submitting my first paper and I am collaborating on a book chapter.”

**Joe Morton, degree in collaboration with Royal Botanic Gardens Kew 2019**

Visit [qmul.ac.uk/sbbs](https://qmul.ac.uk/sbbs) for more information

# Computing, Data Science and Electronic Engineering

**With technology becoming increasingly integral in everything we do, the School of Electronic Engineering and Computer Science (EECS) is helping to define a rapidly evolving industry.**



Students

We are a vibrant and multi-disciplinary learning environment with excellent industry links, where our enthusiasm for research keeps teaching exciting and relevant.

Our range of MSc programmes will develop your practical skills and knowledge, preparing you for your chosen career. Whichever programme you decide to undertake, you will be taught by experts and gain an advanced and thorough understanding of your chosen field.

We are well known for our pioneering research, facilities and educators and we pride ourselves on our world-class activities.

## Careers progression

Our postgraduates have moved into a range of exciting and rewarding roles, equipped with a broad range of skills gained through our programmes, extra-curricular activities and work experience. These roles include Technology Analyst, Data Analyst, Associate Consultant and Interactive Systems Developer

at organisations such as: Ministry of Defence, Investment banking, Sky, Founders4school, Tech Strategies and Orbium.

## Our research

Every 36 hours the NHS deals with over a million patients, generating multiple spoken interactions. High-quality communication is vital to saving lives.

EECS researchers found that using computational methods to analyse clinical communication increased the detection rate of key indicators and resulted in an overall improvement to patient outcomes. They created a training programme for clinicians, resulting in psychiatrists being six times more engaged with their patients. This has been widely used by NHS Trusts since 2014 and was integrated into UK undergraduate medical education in 2015.

The team has also developed new tools used to support structured patient-clinician



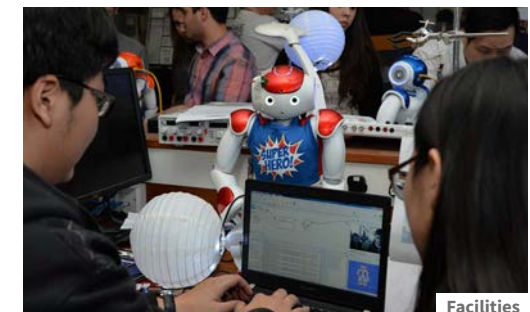
## Our alumni

“I’m a Data Scientist in the energy sector, enhancing the digital journey and solving problems for clients from the oil and gas, wind, and marine industries. Queen Mary was top of my list as I was able to pick from a diverse range of programmes and modules to shape my career. I learnt cutting-edge technologies and key practical skills required for the industry. I was able to learn techniques from other departments expanding my transferable skills. For my final project, I applied the knowledge I gained from modules like Machine Learning and Big Data to my interest in music, combining ideas from both subjects to build a tool.”

**Tayjo, MSc Computer Science with IE 2019**

interactions and inform sharing in care teams. These programmes are now part of the NHS Outcomes Programme and recommended for use with all early intervention teams across England and mental health services in London.

Visit [qmul.ac.uk/eecs](http://qmul.ac.uk/eecs) for more information



Facilities

# Barts Cancer Institute

**Created in 2003, the Barts Cancer Institute (BCI) brings together some of the most eminent cancer research teams in London with one overriding objective: to conduct the most relevant and impactful cancer research.**

Today, BCI is one of the top five cancer research centres in the UK (REF 2014) and one of 14 Cancer Research UK Centres of Excellence.

You will be taught by experts in the field in innovative learning environments that offer an exceptional learning experience, exposure to modern techniques and state-of-the-art laboratories. As a result, you will further your understanding, research and career development in the field of cancer.

#### **Career progression**

Our graduates work in a range of medical, biomedical and scientific roles in hospitals

and NHS Trusts, universities, pharmaceutical companies and the wider healthcare sectors, whilst a number are undertaking further study or research (2017/18 Graduate Outcomes Survey).

#### **Our research**

Clinical researchers from BCI and Barts Health NHS Trust have conducted one of the first studies to investigate the outcome of Covid-19 infection in patients with blood cancer. People with blood cancer are expected to be amongst those at increased risk of infection and more severe outcomes following infection. However, lead author of the study, Dr John Riches,

explains: “This study suggests that the risk of Covid-19 to younger patients with few or no medical conditions aside from their blood cancer is less than the risk to older patients with lots of other medical conditions”.



Laboratory

Visit [bartscancer.london](https://www.bartscancer.london) for more information



#### **Our academics**

Professor Nick Lemoine is Director of the Barts Cancer Institute and a world leader in pancreatic cancer research. Pancreatic cancer is hard to treat and the outlook for patients is generally poor, and his pioneering work seeks to address this. Currently, Professor Lemoine’s team are analysing the genetic information of pancreatic tumour cells to identify which faulty genes play a role in the disease. This will help them identify potential new targets for therapy, particularly those that stop the cancer from spreading in the body. Their research will therefore hopefully lead to the development of new, more precise treatments for the disease, ultimately helping more people to survive.

He also works with colleagues on the development of oncolytic virotherapy, an approach that uses adenoviruses and vaccinia viruses that selectively replicate within and kill cancer cells but leave normal cells untouched.

His research has been funded by programme grants from the Medical Research Council, Cancer Research UK, Digestive Cancer Campaign and the European Union. He has published widely and also holds roles in a range of cancer organisations across the UK and Ireland.



# Blizard Institute

**The Blizard Institute is the largest within Queen Mary's Barts and The London School of Medicine and Dentistry. Our world-class biomedical research and education integrates basic science, clinical and translational research activity within a unique and award-winning facility.**

Our diverse and exciting programmes are taught by academics who are leaders in fields such as genomics, cell biology, translational immunology, neuroscience and trauma.

#### Careers progression

Upon graduation, 96 per cent of our alumni are in highly skilled employment or graduate study. Many go onto PhDs or work for healthcare providers in the UK and abroad 15 months after graduation (2017/18 Graduate Outcomes Survey).

#### Our research

The Institute's research spans basic, laboratory-based science, such as identifying novel targets, drugs or other treatments, through to applied health research. We work by involving patients from our local NHS Trusts and wider populations. Our approach is embedded within the local community and supports our aspiration to produce innovative therapeutic interventions and advance patient management.

Our academics are at the forefront of the response to Covid-19, both treating patients and undertaking research into fighting it. This includes involvement with RECOVERY (Randomised Evaluation of Covid-19 Therapy), established as a randomised clinical trial to test potential treatments.

Academics researching multiple sclerosis demonstrated the effectiveness of using a novel light technology which is now being applied to Covid-19 for potential use in antibody testing.

Our work with The Royal London Hospital Major Trauma Centre helped form the Centre for Trauma Sciences (C4TS). C4TS research helps us understand how the body responds to injury, leading to improvements and innovations in resuscitation, surgery and intensive care. Our interdisciplinary work with the School of Electronic Engineering and Computer Science secured a \$1.2m grant from the US Department of Defense to develop Artificial Intelligence tools that could help save the lives of badly injured soldiers.



#### Our academics

“My clinical background is in emergency medicine. I love the variety and the chance to interact with patients, professional colleagues and students to provide the best possible care at a time that is not usually expected.

“My passion lies in medical education and I developed my clinical-based teaching skills into formal qualifications completing my PhD in Medical Education in 2019. My research interest is in inter-professional education, faculty development and experiential learning. I am working on bringing experiential simulation-based learning into an online forum!

“The best way to deliver safe and effective patient care is to work collaboratively together. To do this, we need to train together. It astounds me how little people know about their professional colleagues' training and I am disappointed by barriers that exist in healthcare, so anything that can break these down, such as our MSc, is great.”

**Dr Libby Thomas**

Visit [qmul.ac.uk/blizard](https://qmul.ac.uk/blizard)  
for more information

# Dentistry

**Based in Whitechapel, the Institute of Dentistry offers cutting-edge technology, a superb education and first-class research facilities.**

If you study with us, you will become part of a dynamic, successful Institute ranked 14th in the world for dentistry (QS World University Rankings by Subject 2021).

The Institute is a special place to undertake your postgraduate studies. We bring together a number of world-leading researchers in basic and clinical sciences who teach and supervise students in the fields of oral medicine, oral pathology, oral microbiology, oral epidemiology, oncology, dental biomaterials, dental biophysics, dental public health, dental education, periodontology, orthodontics, and paediatric, prosthetic and conservative dentistry.

## Careers progression

Most of our graduates are working as dental practitioners in the NHS and private sectors, in the UK and abroad, while some go on to further study, teaching and research roles (2017/18 Graduate Outcomes Survey, 2015/16 and 2016/17 Destination of Leavers of Higher Education surveys).

## Our research

From improving the oral health in children in the UK and Sudan to developing the world's first diagnostic test for the early detection of oral cancers, our research has been instrumental in a number of innovations in dentistry.

For example, Fadil Elamin, Honorary Senior Research Fellow at the Institute of Dentistry, has developed a way of saving the teeth of children who live in remote areas with intermittent or no access to running water and electricity. Instead of drilling out the rot and capping the tooth, Fadil trialled the Hall technique which does not require a local anaesthetic and specialist skills. By sealing the rot in a glue cap, the germs which cause tooth decay are effectively starved of oxygen and therefore cannot develop. It proved to be as effective a treatment as the 'gold standard' and has also been trialled in Scotland. With healthcare resources the world over under increasing strain, the Hall technique is a cost and time-effective way of preserving oral health in children.



## Our academics

Professor Robert Hill is an expert on fluorine-containing glasses and glass-ceramics. He became the first British winner of the prestigious Varshneya Award in 2019 for his pioneering work developing Biomin toothpaste, which contains the special glasses that Professor Hill and his team developed. Following research to exploit fluoride glass technology in the dental field, Biomin Technologies produced toothpaste containing these glasses that dissolve slowly over 10-12 hours releasing calcium, phosphate and fluoride ions. The toothpaste is now sold across Europe, China, India and Australia, and the company is licensing its technology to dental companies for varnishes, composite fillings and adhesives.



Institute of Dentistry, Whitechapel



Clinical skills laboratory

Visit [qmul.ac.uk/dentistry](https://qmul.ac.uk/dentistry) for more information

# Institute of Health Sciences Education

**Focusing primarily on medical education, the Institute of Health Sciences Education forms an integral part of Queen Mary's Barts and The London School of Medicine and Dentistry.**



Royal London Hospital buildings

The Institute is home to leaders in curriculum design, delivery and assessment. We house world-class facilities at our campuses across London and our partner organisations where we teach our students, both those looking to enter the medical profession and those wanting to develop their careers.

We currently offer postgraduate taught programmes in the areas of:

- Clinical Education
- Physician Associate Studies
- Prehospital Medicine.

## Career progression

91 per cent of graduates from all our medicine postgraduate taught programmes across the Faculty were in highly skilled employment or further study 15 months after graduation (2017/18 Graduate Outcomes Survey).

## Our research

Our academics' research focuses on clinical and medical education, covering:

- Developing teaching for junior doctors
- Applying clinical skills to students and trainees that require additional support
- Enhancing medical students' leadership skills through student-selected components
- Improving general practitioners' knowledge through government education campaigns
- Using paramedics to teach future doctors prehospital medicine skills
- Investigating the facilitator's role in London's Air Ambulance's simulation moulage training.

During the Covid-19 pandemic, the Institute adapted much of its work to meet the challenges faced by healthcare professionals. Dr Graham Easton's team in the Clinical and Communication Skills Unit worked with actors to help medical students learn about video and telephone consultations, which became the norm in general practice during the crisis. To further support our healthcare professionals and students, we launched a podcast about clinical communication covering topics such



## Our academics

"I'm a consultant transplant surgeon and trained both in London and New York. I also have a masters and PhD in Education, which have given me the theoretical tools and wider understanding of education and training.

I'm fascinated by our practices of learning, thinking, doing and acting in clinical workplaces. My primary research uses Philosophy as a tool to unpack a student's experiences of training. I published a book last summer which explored the idea that meaningful learning occurs when we are caught up in events that cause us to break away from our familiar patterns of thinking to envisage the world in different and hopefully better ways.

The Covid-19 pandemic has created new opportunities to think about how we deliver healthcare and what that experience can look and feel like, for the patient and healthcare professional."

## Dr Arunthathi Mahendran

as communicating in PPE protective kit (including sign language), sharing best practice across teams and countries, breaking bad news, and video and telephone consultations in primary care.

Visit [qmul.ac.uk/ihse](https://qmul.ac.uk/ihse) for more information

# William Harvey Research Institute

**The William Harvey Research Institute (WHRI) is the UK university sector's largest pharmacological institute. We are committed to high-quality research and offer programmes where you will be taught by world-leading experts in the fields of cardiovascular, endocrine and inflammation research.**

In addition, we achieve international excellence in critical care and perioperative medicine research. We aim to combine talents from different disciplines such as genomics, cell biology, and pharmacology, with translational bench-to-patient studies and large-scale clinical trials.

#### Careers progression

94 per cent of our graduates are in highly skilled jobs and further study 15 months after graduation. Our graduates progress to a range of careers in the medical, health and related sectors, while some work for police and probation services, universities or in the wider life sciences industry. A number also

go on to further study (2017/18 Graduate Outcomes Survey).

#### Our research

An international team including researchers from WHRI have recently delivered a research breakthrough for a leading cause of blindness. The team identified a new protein linked to age-related macular degeneration that may offer new hope for the diagnosis and treatment of the disease, which affects over 1.5 million people in the UK alone.

Artificial intelligence has been used for the first time to instantly and accurately measure blood flow, in a new study involving WHRI

researchers. The results were found to be able to predict chances of death, heart attack and stroke, and can be used by doctors to help recommend treatments.

Researchers from WHRI and Barts Health NHS Trust have begun a new programme of Covid-19 research across Barts Health hospitals, including NHS Nightingale Hospital London. Patients are recruited into clinical trials to understand why some people become severely affected and to investigate interventions to see if they can help more patients survive.

Visit [qmul.ac.uk/whri](https://qmul.ac.uk/whri) for more information



#### Our academics

Sir Mark Caulfield is Professor of Clinical Pharmacology and an NHS consultant. His research has been independently rated amongst the top 10 scientific discoveries in his field, and he has won numerous awards. He raised £25m toward the William Harvey Heart Centre which created a translational clinical research centre and was the academic leader that created the Barts Heart Centre, bringing three hospitals together to create the UK's largest heart centre. His main research focuses on cardiovascular genomics and cardiovascular clinical trials.

Mark was Chief Scientist for Genomics England until July 2021, leading on all scientific activities including engagement with NHS England and the general public. He is now CEO of Barts Life Sciences, driving the development of a world-leading life sciences campus at Whitechapel focusing on digital health, genomics and clinical innovation.



Charterhouse Square campus



Students

# Wolfson Institute of Population Health

## The Wolfson Institute of Population Health offers postgraduate degrees in psychology and mental health, and global and public health.

The Institute combines our research, clinical and teaching strengths in public health and policy; primary care; prevention, detection and diagnosis; psychiatry and mental health; and evaluation and methods.

We deliver world-class research and education to drive improvements in the health of local, national and global populations, identifying the causes and methods of prevention of physical and mental health conditions that lead to poor quality of life and premature death. Our work has had an unprecedented impact on lives across the world. By sharing knowledge and pushing the boundaries of research, we will continue to advance preventive medicine on a global scale.

### Careers progression

92 per cent of our graduates in employment or study were in highly skilled jobs or study fifteen months after graduation. A number are working as medical practitioners, psychologists, counsellors, in the NHS, social care and the wider healthcare sectors, for charities and

non-governmental organisations, and in government, while some have gone on to further study (2017/18 Graduate Outcomes Survey).

### Our research

Wolfson academics are at the forefront of influential and vital medical research. Dr Belinda Nedjai and colleagues have developed a non-invasive test to detect cervical pre-cancer by analysing urine and vaginal samples women collect themselves. The self-sampling test had proved popular with women taking part in the study – suggesting it's likely to improve participation in screening programmes.

A study led by Professor Jack Cuzick has confirmed that Anastrozole offers significant long-term protection for postmenopausal women who take it for five years. Findings show that in trial participants, breast cancer incidence was 49 per cent lower than in women given a placebo.

Dr Doreen Montag's research took her to Peru's Amazonian region, examining how vulnerable its indigenous communities are to Covid-19 as high prices, shortages of supplies, and a history of mistreatment of indigenous people have led to mistrust in hospital treatments.

Research led by Dr Jonathan Kennedy shows that the rise of populism across Europe has coincided with a growing mistrust of vaccines. It found a highly significant positive association between the percentage of people in a country who voted for populist parties and the percentage who believe that vaccines are neither important nor effective.

Visit [qmul.ac.uk/wolfson](https://qmul.ac.uk/wolfson) for more information



### Our academics

Dr Mark Freestone works mainly in the field of forensic mental health, conducting research into the efficacy of treatments for offenders. A Fellow of the Alan Turing Institute, he has consulted on forensic mental health issues for NHS England and recently the BBC America drama series Killing Eve.



### Our academics

Dr Andrew Harmer is investigating the links between global health and power, and the health effects of climate change. His work includes consultancy projects for development organisations on subjects such as maternal and child health, health systems, and global health partnerships.

# PhD study



**Join a thriving, curiosity-driven community of over 1,800 postgraduate research students, many of whom stay with us after completing their masters. Supervised by academics who are world leaders in their fields, they span a range of thesis topics and shape our understanding of some of the biggest challenges facing the world.**

#### **Information on services**

As a Queen Mary PhD student, you'll become a member of our Doctoral College. The Doctoral College looks after you through each stage of your PhD, from offering application guidance through to the development of your research and beyond the submission of your thesis.

You'll be provided with the support and resources you need to excel. This encompasses supervision tailored to you, flexible training programmes, encouragement and help with overseas travel, specialist careers support and ongoing student support, including networking and wellbeing.

You will also have access to funding and financial advice for research activities.

#### **Research and reputation**

Queen Mary is a Russell Group university with a global reputation for research excellence. It's the perfect place to work alongside world-class academics to foster change, address global challenges and improve lives.

We ranked fifth in the UK for the quality of research outputs (REF 2014), and third in the world for research citations for the subject of medicine (QS World University Rankings 2019). Our research has seen innovation in Artificial Intelligence, the discovery of new planets, and award-winning historical biographies.

For more information on PhD study at Queen Mary visit  
[qmul.ac.uk/doctorscollege](https://qmul.ac.uk/doctorscollege)

# Application and deadlines

**Please apply as early as possible to allow enough time for your application to be considered. That's especially true if you're seeking financial support from Research Councils or other award-giving bodies.**

We update the relevant course pages on our website as soon as a programme becomes full. Once this happens, we will no longer be able to consider applications. You can check for general application deadlines at these links:

- Deadlines for postgraduate taught programmes [qmul.ac.uk/postgraduate/taught/deadlines](https://qmul.ac.uk/postgraduate/taught/deadlines)
- Deadlines for postgraduate research programmes [qmul.ac.uk/postgraduate/research/deadlines](https://qmul.ac.uk/postgraduate/research/deadlines)

Please note some courses may have earlier deadlines. If this is the case the earlier deadline will be published on the individual course pages on our website, which can be accessed at [qmul.ac.uk/postgraduate](https://qmul.ac.uk/postgraduate)

#### **Help with overseas applications**

If you're applying from overseas, our authorised local representatives can help you with your application. They'll guide you through the application process and upload documents online. This service is completely

free of charge. You can find details of in-country representatives on your country page. You'll also find information about the equivalent entry requirement qualifications for your country.

Find details about our in-country representatives at [qmul.ac.uk/international-students/countries](https://qmul.ac.uk/international-students/countries)

If your country isn't listed, contact the Global Engagement team [globaleengagement@qmul.ac.uk](mailto:globaleengagement@qmul.ac.uk)

#### **Entry requirements**

Please use our programme finder to check the entry requirements for the course you're interested in [qmul.ac.uk/postgraduate](https://qmul.ac.uk/postgraduate)

#### **Law conversion programmes**

The Senior Status LLB (two years) is a qualifying law degree suitable for non-law graduates. It's an accelerated version of the traditional three-year route and is popular with

students considering a career in law or with an academic interest in the subject.

#### **Fast-track medicine programmes**

Our Graduate Entry Medicine MBBS (four years) is designed to be a fast-track route for graduates who obtained good degrees in science or health-related subjects. The first year of study is based on the first two years of the five-year MBBS programme. For more information, contact [smdadmissions@qmul.ac.uk](mailto:smdadmissions@qmul.ac.uk)

# Our courses by subject

For more information on these programmes including fees, start dates and duration, please visit [qmul.ac.uk/coursefinder](https://qmul.ac.uk/coursefinder)

**Course listing key:**

FT = full time, PT = part time, VM = variable mode

Subject / Programme	Qualification	Study mode	Campus
<b>Biological Sciences</b>			
Bioinformatics	MSc	FT, PT	Mile End
Biodiversity and Conservation	MSc	FT	Mile End and Kew Gardens
Plant and Fungal Taxonomy, Diversity and Conservation	MSc	FT	Mile End and Kew Gardens
<b>Business and Management</b>			
Accounting and Finance	MSc	FT	Mile End
Accounting and Management	MSc	FT	Mile End
Blockchain in Business and Society	MSc	FT	Mile End
Business Analytics	MSc	FT	Mile End
Business and Management	MRes	FT	Mile End
Creative Industries and Arts Organisation	MA	FT	Mile End
Entrepreneurship and Innovation	MSc	FT	Mile End
Heritage Management (with HRP)	MA	FT, PT	Mile End
International Business	MSc	FT	Mile End
International Financial Management	MSc	FT	Mile End
International Human Resource Management	MSc	FT, PT	Mile End
Management	MSc	FT	Mile End
Management (January start)	MSc	FT	Mile End
<b>Business and Management</b>			
Management with Integrated Pre-Masters	MSc	FT	Mile End
Management with Integrated Pre-Masters (January start)	MSc	FT	Mile End
Marketing	MSc	FT	Mile End

Subject / Programme	Qualification	Study mode	Campus
<b>Business and Management</b>			
Marketing (January start)	MSc	FT	Mile End
<b>Chemical Sciences</b>			
Chemical Research	MSc	FT, PT	Mile End
<b>Computing, Data Science and Electronic Engineering</b>			
Advanced Electronic and Electrical Engineering	MSc	FT, PT	Mile End
Artificial Intelligence	MSc	FT, PT	Mile End
Artificial Intelligence with Machine Learning (January start)	MSc	FT	Mile End
Big Data Science	MSc	FT, PT	Mile End
Big Data Science with Machine Learning Systems (January start)	MSc	FT	Mile End
Computer Games	MSc	FT	Mile End
Computer Science	MSc	FT, PT	Mile End
Computer Science by Research	MSc	FT, PT	Mile End
Computing and Information Systems (Conversion programme)	MSc	FT, PT	Mile End
Data Science and Artificial Intelligence (Conversion programme)	MSc	FT	Mile End
Digital and Technology Solutions Specialist (Apprenticeship)	MSc	PT	Mile End
Electronic Engineering by Research	MSc	FT, PT	Mile End
Internet of Things	MSc	FT, PT	Mile End
Machine Learning for Visual Data Analytics	MSc	FT, PT	Mile End
Media and Arts Technology	MSc	FT	Mile End
Sound and Music Computing	MSc	FT, PT	Mile End
Telecommunication and Wireless Systems	MSc	FT, PT	Mile End
<b>Dentistry</b>			
Clinical Oral Microbiology	DClinDent	FT	Whitechapel
Craniofacial Trauma Reconstruction	MSc	FT	Distance Learning
Dental Materials	MSc	FT	Whitechapel
Dental Public Health, Policy and Leadership	MSc, PGCert, PGDip	PT	Distance Learning
Dental Science for Clinical Practice	MSc	FT	Whitechapel



Subject / Programme	Qualification	Study mode	Campus
<b>Dentistry</b>			
Dental Technology	MSc	FT	Whitechapel
Endodontic Practice	Msc	PT	Whitechapel
Endodontics	DClinDent	FT	Whitechapel
Experimental Oral Pathology (Oral Sciences)	MSc	FT	Whitechapel
Minimally Invasive Dentistry	DClinDent, MSc	FT, PT	Whitechapel
Oral Biology	MSc	FT	Whitechapel
Oral Medicine	DClinDent	FT	Whitechapel
Oral Surgery	DClinDent	FT	Whitechapel
Orthodontics	DClinDent	FT	Whitechapel
Paediatric Dentistry	DClinDent	FT	Whitechapel
Periodontology	DClinDent	FT	Whitechapel
Prosthodontics	DClinDent	FT	Whitechapel
<b>Drama</b>			
Live Art	MA	FT, PT	Mile End
Theatre and Performance	MA	FT, PT	Mile End
<b>Economics and Finance</b>			
Banking and Finance	MSc	FT	Mile End
Banking and Finance (January start)	MSc	FT	Mile End
Behavioural Finance	MSc	FT	Mile End
Behavioural Finance (CFA Pathway)	MSc	FT	Mile End
Corporate Finance	MSc	FT	Mile End
Economics	MRes, MSc	FT	Mile End
Finance	MRes, MSc	FT	Mile End
Finance (CFA Pathway)	MSc	FT	Mile End
Finance and Econometrics	MRes, MSc	FT	Mile End
Finance and Machine Learning	MSc	FT	Mile End
Investment Banking	MSc	FT	Mile End
Investment Banking (CFA Pathway)	MSc	FT	Mile End
Investment and Finance	MSc	FT, PT	Mile End
Investment and Finance (CFA Pathway)	MSc	FT	Mile End
Mental Health Economics	MSc	FT, PT	Mile End

Subject / Programme	Qualification	Study mode	Campus
<b>Economics and Finance</b>			
Wealth Management	MSc	FT	Mile End
<b>Engineering</b>			
Advanced Aeronautical Engineering and Space Systems	MSc	FT	Mile End
Advanced Mechanical Engineering	MSc	FT	Mile End
Advanced Robotics	MSc	FT	Mile End
Aerospace Structures and Materials	MSc	FT	Mile End
Biomedical Engineering	MSc	FT	Mile End
Biomedical Engineering (conversion programme)	MSc	FT	Mile End
Biomedical Engineering with Biomaterials and Tissue Engineering	MSc	FT	Mile End
Computational Engineering	MSc	FT	Mile End
Sustainable Energy Systems	MSc	FT	Mile End
<b>English</b>			
English Literature	MA	FT, PT	Mile End
<b>Geography and Environmental Science</b>			
Development and Global Health	MA	FT, PT	Mile End
Development and International Business	MSc	FT, PT	Mile End
Environmental Science by Research	MSc	FT, PT	Mile End
Geography	MRes	FT, PT	Mile End
Global Development	MA	FT, PT	Mile End
Water and Environmental Management	MSc	FT, PT	Mile End
<b>History</b>			
History	MA	FT, PT	Mile End
History of Political Thought and Intellectual History	MA	FT, PT	Mile End
Urban History and Culture	MA	FT, PT	University of London Institute in Paris
<b>Languages, Linguistics and Film</b>			
Applied Linguistics	MA	FT	Mile End
English Language Teaching	MA, PGCert, PGDip	FT	Mile End
English Language Teaching (January start)	PGCert	FT	Mile End
English Language Teaching with Integrated Pre-Masters	MA	FT	Mile End
Film (pathways: Theory/Directing Fiction/Documentary Practice)	MA	FT	Mile End
Language Teaching	MA, PGCert, PGDip	FT	Mile End

Subject / Programme	Qualification	Study mode	Campus
<b>Languages, Linguistics and Film</b>			
Language Teaching (January start)	PGCert	FT	Mile End
Linguistics	MA, MRes	FT, PT	Mile End
<b>Law</b>			
Art, Business and Law	LLM	FT, PT	Lincoln's Inn Fields
Banking and Finance Law	LLM	FT, PT	Lincoln's Inn Fields
Banking and Finance Law (January start)	LLM	FT	Lincoln's Inn Fields
Commercial Law (London/Singapore)	Double LLM	FT	Lincoln's Inn Fields and SMU
Commercial and Corporate Law	LLM	FT, PT	Lincoln's Inn Fields
Commercial and Corporate Law (January start)	LLM	FT	Lincoln's Inn Fields
Comparative and International Dispute Resolution	LLM	FT, PT	Lincoln's Inn Fields
Comparative and International Dispute Resolution (January start)	LLM	FT	Lincoln's Inn Fields
Competition Law	LLM	FT, PT	Lincoln's Inn Fields
Criminal Justice	LLM, MRes	FT, PT	Lincoln's Inn Fields
Energy and Natural Resources Law	LLM	FT, PT	Lincoln's Inn Fields
Environmental Law	LLM	FT, PT	Lincoln's Inn Fields
European Law	LLM	FT, PT	Lincoln's Inn Fields
Global MBA	MBA, PGCert, PGDip	FT, PT	Distance Learning
Human Rights Law	LLM, MRes	FT, PT	Lincoln's Inn Fields
Immigration Law	LLM, MRes	FT, PT	Lincoln's Inn Fields
Insurance Law	LLM	FT, PT	Lincoln's Inn Fields
Intellectual Property Law	LLM, PGCert	FT, PT	Lincoln's Inn Fields
Intellectual Property Law (January start)	LLM	FT	Lincoln's Inn Fields
International Business Law	LLM	FT, PT	Lincoln's Inn Fields
International Business Law (January start)	LLM	FT	Lincoln's Inn Fields
International Dispute Resolution (September/April start)	LLM, PGCert, PGDip	FT, PT	Distance Learning
International Dispute Resolution (Arbitration)	PGDip	FT	Lincoln's Inn Fields
International Economic Law	LLM, MRes	FT, PT	Lincoln's Inn Fields
International Shipping Law	LLM	FT, PT	Lincoln's Inn Fields
International Tax Law	LLM	FT, PT	Lincoln's Inn Fields
Law and Economics	LLM, PGCert, PGDip	FT, PT	Lincoln's Inn Fields
Law and Finance	MSc, PGCert, PGDip	FT, PT	Lincoln's Inn Fields

Subject / Programme	Qualification	Study mode	Campus
<b>Law</b>			
Laws	LLM, PGDip	FT, PT	Lincoln's Inn Fields
Laws (Flexible)	LLM, PGCert, PGDip	FT, VM	Lincoln's Inn Fields, Mile End
Laws (Flexible) (January start)	LLM, PGDip	VM	Lincoln's Inn Fields, Mile End
Laws (Paris)*	LLM	FT, PT	Paris
Laws (Paris) (January start)*	LLM	FT, PT	Paris
Legal Systems, Research Skills and Writing for IT Law (January start)	Pre-sessional module	PT	Distance Learning
Management of Intellectual Property	MSc	FT, PT	Lincoln's Inn Fields
Public International Law	LLM, MRes	FT, PT	Lincoln's Inn Fields
Regulation and Compliance	LLM, MSc	FT, PT, VM	Lincoln's Inn Fields
Sorbonne Law School - Queen Mary University of London	Double LLM	FT	Paris
Technology, Media and Telecommunications Law	LLM, PGCert, PGDip	FT, PT, VM	Distance Learning, Lincoln's Inn Fields
Technology, Media and Telecommunications Law (January start)	LLM, PGCert, PGDip	FT, PT, VM	Distance Learning, Lincoln's Inn Fields
Trade Mark Law and Practice	PGCert	PT	Lincoln's Inn Fields
<b>Materials</b>			
Advanced Materials Science and Engineering	MSc	FT	Mile End
Advanced Polymer Science and Engineering	MSc	FT	Mile End
Materials Research	MRes	FT	Mile End
<b>Mathematics</b>			
Data Analytics	MSc	FT, PT	Mile End
Financial Computing	MSc	FT, PT	Mile End
Financial Mathematics	MSc	FT, PT	Mile End
Mathematics	MSc	FT, PT	Mile End
<b>Medicine and Health Sciences</b>			
Aesthetic Medicine	MSc, PGCert, PGDip	PT	Distance Learning
Biomedical Sciences	MSc	FT	Mile End, Charterhouse Square
Biomedical Science (Medical Microbiology)	MSc	FT, PT	Whitechapel
Cancer and Clinical Oncology	MSc, PGDip	FT, PT	Charterhouse Square, Distance Learning
Cancer and Molecular and Cellular Biology	MSc, PGDip	FT, PT	Charterhouse Square, Distance Learning
Cancer and Molecular Pathology and Genomics	MSc, PGDip	FT, PT	Charterhouse Square, Distance Learning
Cancer and Therapeutics	MSc, PGDip	FT, PT	Charterhouse Square, Distance Learning
Cardiac and Vascular Medicine	MRes	FT	Charterhouse Square

\*Check our website for available specialisms

Subject / Programme	Qualification	Study mode	Campus
<b>Medicine and Health Sciences</b>			
Clinical Dermatology	PGDip	PT	Distance Learning
Clinical Drug Development	MSc, PGDip	FT, PT, VM	Charterhouse Square, Distance Learning
Clinical Education (Degree Apprenticeship)	PGCert	PT	Whitechapel
Clinical Endocrinology	MSc, PGDip	FT	Charterhouse Square, Distance Learning
Clinical Microbiology	PGDip, MSc	FT, PT	Whitechapel
Clinical Research	MRes, PGCert, PGDip	PT	Charterhouse Square
Clinical Research (January start)	MRes, PGCert, PGDip	PT	Charterhouse Square
Clinical Science (Infection Sciences)	MSc	PT	Whitechapel
Creative Arts and Mental Health	MSc, PGDip	FT, PT	Mile End
Critical Care	MSc, PGCert, PGDip	FT, PT, VM	Charterhouse Square, Distance Learning
Education for Clinical Contexts	MA, PGCert	FT, PT	Whitechapel, Distance Learning
Education for Clinical Contexts (January start)	MA, PGCert	FT, PT	Whitechapel, Distance Learning
Emergency and Resuscitation Medicine	MSc, PGDip	PT	Distance Learning
Endocrinology and Diabetes	MSc, PGDip	PT	Distance Learning
Forensic Medical Sciences	MSc	FT	Charterhouse Square
Forensic Psychology and Mental Health	MSc	FT	Whitechapel, Distance Learning
Gastroenterology	MSc, PGDip	FT, PT	Whitechapel, Distance Learning
Genomic Medicine	MSc, PGDip, PGCert	FT, PT	Charterhouse Square, Distance Learning
Genomic Medicine (January start)	MSc, PGDip, PGCert	FT, PT	Charterhouse Square, Distance Learning
Global Health Law and Governance	MRes	FT	Whitechapel
Global Health Systems Theory and Policy	MRes, MSc	FT, PT	Whitechapel
Global Public Health	MSc, PGCert, PGDip	PT	Distance Learning
Global Public Health and Policy	MSc, MRes	FT, PT	Whitechapel
Health Care Research Methods	MSc, PGDip	FT, PT, VM	Charterhouse Square, Distance Learning
Health Data in Practice	MRes	FT	Whitechapel
Laparoscopic Surgery and Surgical Skills	MSc	FT, PT	Charterhouse Square, Distance Learning
Laparoscopic Surgical Skills	PGCert, PGDip	PT	Distance Learning
Mental Health: Cultural Psychology and Psychiatry	MRes, MSc, PGDip	FT, PT	Whitechapel, Distance Learning
Mental Health: Psychological Therapies	MRes, MSc, PGDip	FT, PT	Whitechapel, Distance Learning
Molecular and Genomic Medicine	Double MSc	FT, PT	IMU (Malaysia) and Distance Learning

Subject / Programme	Qualification	Study mode	Campus
<b>Medicine and Health Sciences</b>			
Neuroscience and Translational Medicine	MSc, PGCert	FT, PT	Whitechapel
Orthopaedic Trauma Science	MSc	PT	Distance Learning
Paediatric Emergency Medicine	MSc, PGCert, PGDip	PT	Distance Learning
Psychology: Mental Health Sciences	MSc	FT	Mile End and Charterhouse Square
Physician Associate Studies (January start)	MSc	FT	Whitechapel
Podiatric Sports Medicine	MSc, PGCert, PGDip	FT, PT, VM	Mile End
Prehospital Medicine	MSc	PT	Whitechapel
Public Mental Health	MSc	FT, PT	Whitechapel
Regenerative Medicine	MSc	FT	Whitechapel
Sports and Exercise Medicine - Medic	MSc, PGCert, PGDip	FT, PT, VM	Mile End
Sports and Exercise Medicine - Physio	MSc, PGCert, PGDip	FT, PT, VM	Mile End
Sports and Exercise Medicine - Physio (MACP accredited)	MSc, PGDip	FT, PT	Mile End
Surgical Skills (General Surgery/Gynaecology) (Malta)	MSc	PT	Malta and Distance Learning
Translational Immunology	MRes	FT	Charterhouse Square
Trauma Sciences	MSc	PT	Distance Learning
Trauma Sciences (Military and Humanitarian)	MSc	PT	Distance Learning
Tuberculosis	PGCert	PT	Distance Learning
<b>Physics and Astronomy</b>			
Astrophysics	MSc	FT, PT	Mile End
Astronomy and Astrophysics	PGCert	PT	Mile End
Physics: Condensed Matter Physics	MSc	FT	Mile End
Physics (EuroMasters)	MSc	FT	Mile End
Physics: Particle Physics	MSc	FT	Mile End
Theoretical Physics	MSc	FT	Mile End
<b>Politics and International Relations</b>			
International Business and Politics	MSc	FT, PT	Mile End
International Public Policy	MSc, PGCert, PGDip	FT, PT	Mile End, Distance Learning
International Relations	MA, MRes, PGCert, PGDip	FT, PT	Mile End, Distance Learning
International Relations (Paris)	MA, PGDip	FT	Paris
Public Policy	MRes, MSc	FT, PT	Mile End

# Terms and conditions

## 1. Rules and regulations

The offer of, and acceptance of, a place at Queen Mary University of London (“Queen Mary”) is made on the understanding that you undertake to observe the terms and conditions of our Academic Regulations and related policies. These cover, among other things, payment of fees, attendance at classes, submission of work, attendance at examinations, student discipline, complaints procedure, freedom of speech and equal opportunities policies. To read the Academic Regulations and related policies, visit [arcs.qmul.ac.uk/policy](https://arcs.qmul.ac.uk/policy)

## 2. Changes to our programmes

We will aim to deliver your programme so that it closely matches the way in which it has been described to you by Queen Mary, especially at the point that you accept your offer. However, it is important to understand that there are circumstances in which we may subsequently change aspects of your programme. Our programmes are delivered

within a dynamic, academic community by staff who are actively engaged in research. In this context, we might make changes so that our students can learn from the latest academic research. We also value student feedback and provide regular opportunities for our students to comment on the content of their programme. We may therefore alter your programme in response to this dialogue with current students. Other circumstances which can lead to changes include: staff changes, which can lead to new modules being offered, modules being withdrawn, or a change to who teaches the programme; changes made in response to new requirements from external professional or statutory bodies; or changes to the way in which universities are funded, which might lead to changes in the availability of some student services, for example. In the unlikely event that we discontinue a programme of study, or change it significantly before it begins, we will inform applicants holding an offer of a place at the earliest opportunity

and will endeavour to offer a suitable alternative programme at Queen Mary. We will also ensure that these changes are reflected on our website as soon as possible.

## 3. Liability for damage to person or property

Queen Mary does not accept any responsibility or liability for any loss and/or damage to:

- (a) your property, students and/or visitors’ property and/or
- (b) any transfer of computer viruses to your equipment, students and/or visitors’ equipment unless caused by Queen Mary’s negligence.
- (c) Neither does Queen Mary accept any responsibility or liability for personal injury to you, students and/or visitors caused by their misuse or unauthorised use of Queen Mary equipment, while they are on Queen Mary premises, or engaged in Queen Mary activities.

**4.1** Queen Mary will receive personal data from you in various ways when you submit your application for a programme at Queen Mary. This may include special category or criminal convictions data under data protection legislation (the General Data Protection Regulations (Regulation (EU) 2016/679) as implemented by the Data Protection Act 2018 (as amended)).

**4.2** Your personal data (including any special category personal data) will be held by Queen Mary and may be used by Queen Mary to enable it to fulfil its responsibilities to you.

**5.1** Accuracy of information in this prospectus Queen Mary has made reasonable efforts to ensure that the information provided in this prospectus is both helpful and accurate at the time of going to print. However, this information is subject to change over time. For this reason, it is important that you check the website for the most up-to-date information

([qmul.ac.uk](https://qmul.ac.uk)) or contact us using the details contained within the document.

**5.2** Applicants are strongly advised to check the course finder on the Queen Mary website for up-to-date entry requirements before submitting their application [qmul.ac.uk/postgraduate/coursefinder](https://qmul.ac.uk/postgraduate/coursefinder)

**5.3** Read our terms and conditions in full at [qmul.ac.uk/prospective/termsandconditions](https://qmul.ac.uk/prospective/termsandconditions)



**6.** This prospectus was manufactured using UPM Fine Offset sourced from an ISO 14001 certified mill, where the pulp was bleached using an Elemental Chlorine Free (EFC) process. The materials followed a Chain-of-Custody scheme, made of materials from well-managed, FSC®-certified forests and other controlled sources.





Queen Mary  
University of London

**RUSSELL  
GROUP**