

Postgraduate Prospectus | 2023



**Diverse thinking creates
brilliant breakthroughs**



Queen Mary
University of London

**RUSSELL
GROUP**

Contents

About us

Why Queen Mary?	4	Careers	18
Diversity	6	International students	22
Living in London	8	Facilities	24
Where to find us	10	Student support	30
Our London campuses	11	Student finance and funding	34
Accommodation	14	Applications and deadlines	38
Queen Mary beyond London	16		

About our programmes

Humanities and Social Sciences		Engineering and Materials Science	62
Business and Management	42	Mathematical Sciences	64
Economics and Finance	44	Physical and Chemical Sciences	66
English and Drama	46	Medicine and Dentistry	
Geography	48	Barts Cancer Institute	68
History	50	Blizard Institute	70
Languages, Linguistics and Film	52	Dentistry	72
Law	54	Institute of Health Sciences Education	74
Politics and International Relations	56	William Harvey Research Institute	76
Science and Engineering		Wolfson Institute of Population Health	78
Biological and Behavioural Sciences	58		
Computer Science and		Postgraduate Research Programmes	80
Electronic Engineering	60		

List of our degree programmes

Biological Sciences	84	Geography and Environmental Science	89
Business and Management	84	History	90
Chemical Sciences	85	Language, Linguistics and Film	90
Computing, Data Science		Law	91
and Electronic Engineering	85	Materials	93
Dentistry	86	Mathematics	93
Drama	87	Medicine and Health Science	94
Economics and Finance	88	Physics and Astronomy	97
Engineering	89	Politics and International Relations	98
English	89		

Terms and conditions	100
----------------------	-----



Why Queen Mary?

Welcome to Queen Mary University of London, a world-leading Russell Group University that stands out from the crowd. Through excellence in research and education, we support our diverse communities of staff and students to achieve the previously unthinkable.

Leading through research

At Queen Mary, world-class research and innovation bring our postgraduate programmes to life. We are one of the UK's top research intensive universities, a place where you'll be taught by academics who are leading in their field, in an exciting, nurturing and inclusive environment.

Russell Group

Queen Mary is a member of the Russell Group, which represents the 24 leading universities in the UK. Membership in this elite group demonstrates our excellence across research, teaching and learning.

Our past and present

We have a proud history that dates back to 1785, with each of our four historic founding institutions (St Bartholomew's

Hospital Medical College, London Hospital Medical College, Westfield College and Queen Mary College) established to provide "hope and opportunity" to underrepresented members of society.

The aim was, and still is, to be a place where anyone can succeed. We nurture a diversity of talent through an outstanding education, while putting our community's wellbeing first.

Life-changing research and collaboration

The impact of our research can be felt through our teaching – and across the globe. We work closely with industry, government, business, communities and charities around the world, from the communities of East London to the favelas of Rio de Janeiro.

Queen Mary was ranked joint seventh in the UK for its quality of research, with 92 per cent of its research assessed as world-leading or internationally excellent in the Research Excellence Framework 2021. We are in the top nine per cent of universities internationally in the QS World University Rankings 2023.

What we offer

We offer a wide range of full-time and part-time programmes in the humanities and social sciences, science and engineering, and medicine and dentistry.

We will offer you a fantastic education and a full extra-curricular programme to give you the very best learning and social experience from the first day you join us.



Learn more

About Queen Mary

Diversity

Our community of staff and students are drawn from over 170 nationalities, making Queen Mary one of the most diverse Universities in the world. We believe that diversity of thought leads to truly original ideas – and supports ground-breaking and exciting academic work and collaborations.

A global education

Queen Mary is highly ranked for internationalisation in the 2023 QS World Rankings (specifically for International Faculty Ratio and International Students), cementing our position as a top global University. We are proud to be a London University with thriving communities in China, Malta and Paris. Inclusion is one of our core values at

Queen Mary and is part of what makes us so unique. You'll get to know staff and students from a range of backgrounds, nationalities and cultures who will challenge you academically, stimulate your curiosity and broaden your perspective. You will study alongside people from all over the world, forming friendships and connections with colleagues and mentors.



Learn more

A global University





Living in London

Take your place in London, a world city like no other. Bringing together the very best of the world's culture, innovation, history and diversity, London is the political, financial and cultural heart of the UK. You'll enjoy both a world-class education and the benefits of studying in a truly global city.

London is a place where over 300 languages are spoken across more than 200 nationalities, where you'll meet people from around the corner and the other side of the world.

London culture

Culture and London go hand-in-hand. Explore and enjoy UNESCO World Heritage Sites, the very best of the world's theatre, live comedy, world-famous galleries and museums, historic libraries, hundreds of bookshops, beautiful parks, festivals, independent cinemas, nightclubs and world cuisine all on your doorstep.

Local to Queen Mary

International and energetic, East London is home to bustling

food markets, pop-up restaurants, vibrant nightlife, independent shops and beautiful parks. Tech City, Canary Wharf, the Queen Elizabeth Olympic Park and the creative hubs of Shoreditch and Hackney are within walking or cycling distance, or a short bus journey away.

Travel

London has excellent links to other parts of the UK, Europe and the rest of the world. The entire city is easily accessible by bicycle or by public transport from any of our London campuses, three of which are in the heart of the capital. From our East London campuses, you can be in Central London in 20 minutes or less.

Safety

Queen Mary offers a secure campus environment in the heart of London. London's ranked among the top 20 safest cities in the world, so you can explore the city with peace of mind. When you join us you'll also have access to our Student Services team, who can help you settle in and are on hand to address any individual concerns.

Cost of living

Living in London might not be as expensive as you think, especially as Queen Mary provides a wide variety of affordable accommodation. Read page 34 for the financial support, including scholarships, that's available to you.



[Learn more](#)

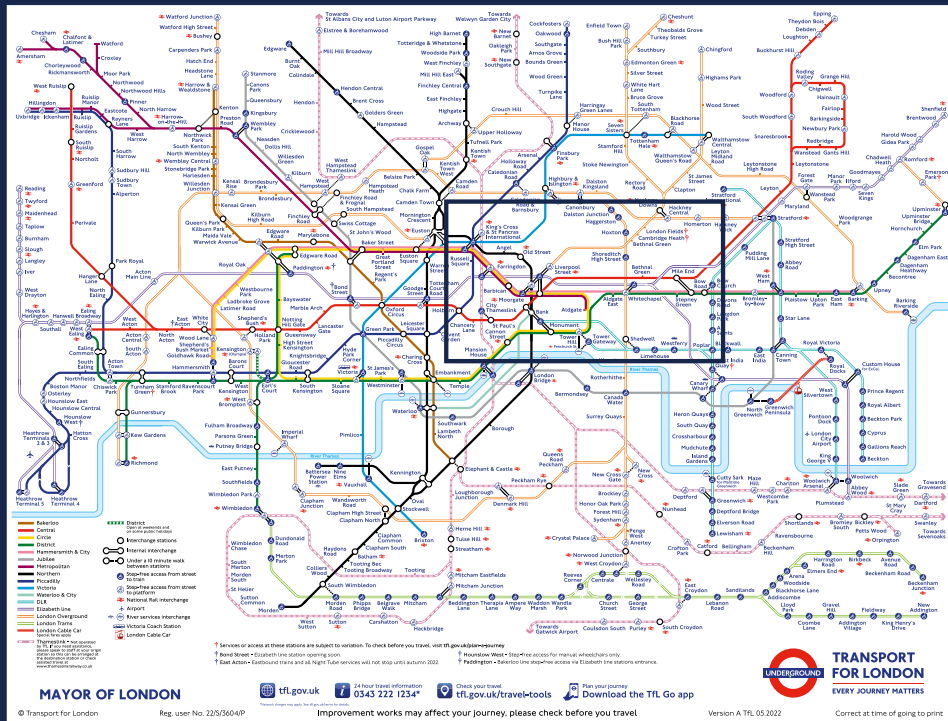
[Welfare at
Queen Mary](#)



[Learn more](#)

[Studying and
living in London](#)

Where to find us



Learn more
How to find us



Learn more
Transport for London
journey planner

Our London campuses

Enjoy the security and community of campus living while thriving in the bustle of London life. Make the most of five well-connected campuses across East and Central London, each with academic facilities and social spaces designed for you to get the most from your Queen Mary experience.



1 Mile End

Set alongside the historic Regent's Canal, Mile End is home to our Humanities and Social Sciences, and Science and Engineering Faculties. Most postgraduate students studying these subjects are based on this campus. The campus has a 24-hour library, cafés, a restaurant, bar, gym, shops, an on-site bank and plenty of green space to enjoy.

- ⊖ Mile End station
- ⊖ Stepney Green station



Explore
The virtual
campus tour



2 Whitechapel

Next to The Royal London Hospital is our Whitechapel campus, home to the Blizard Institute, state-of-the-art labs and a beautiful gothic medical library. Many of our postgraduate taught and postgraduate research medicine and dentistry students are based here. Whitechapel has a strong sense of community, and is famous for its street markets, culture and world food. The Whitechapel campus is a 20-minute walk from Mile End.

- 🚶 Whitechapel station
- 🚶 Shadwell station



Explore

The virtual campus tour

4 West Smithfield

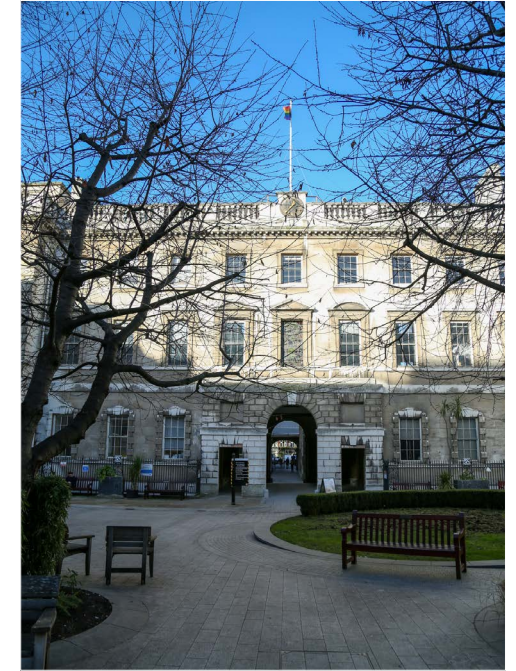
Our West Smithfield campus in Farringdon is where some of our postgraduate taught medical students are based. It includes St Bartholomew's Hospital and the West Smithfield Medical Library, and houses some of Queen Mary's cardiovascular, cancer, epidemiology and public health research facilities.

- 🚶 Barbican station
- 🚶 Farringdon station



Explore

The virtual campus tour



3 Charterhouse Square

Located in one of London's green, historic pockets, our Charterhouse Square campus is for postgraduate taught and postgraduate research medical students. It's home to the Barts Cancer Institute, the William Harvey Research Institute and the Wolfson Institute of Population Health. The Barbican Centre and the Museum of London are close by.

- 🚶 Barbican station
- 🚶 Farringdon station



Explore

The virtual campus tour



5 Lincoln's Inn Fields

Moments from the cafés, restaurants and shops of Covent Garden, our Lincoln's Inn Fields campus is in Holborn, the historic legal centre of London. Most of our postgraduate law students are based here, with the beating heart of London accessible on foot.

- 🚶 Holborn station
- 🚶 Chancery Lane station



Explore

The virtual campus tour



Accommodation

At Queen Mary, we can offer a range of housing options close to our main campuses. Our postgraduate-only residences are a popular, competitively priced choice to suit all budgets.

We can offer rooms in shared flats or studios, all of which are self-catering, and located a short walk or bike ride away from our campuses. We also offer family accommodation and rooms designed for people with disabilities. We also provide our incoming students support in seeking alternative accommodation or privately built halls of residence.

We know how important it is to find the right place to live, and our accommodation team are ready to help support and guide you.

Living near campus

We have dedicated postgraduate accommodation at **Aspire Point** in Stratford. Just one tube stop, a short bicycle ride or a 15-minute bus journey away from Queen Mary's Mile End campus, Aspire Point provides affordable living and study space with glorious views over London and the Queen Elizabeth Olympic Park. With en suite rooms, studios and rooms with shared bathrooms, there's accommodation suited to every need and budget.

Postgraduate accommodation is also available in **Sherrin House**, run by our dedicated housing partner in Stepney Green, which offers 255 single en suite rooms. Students are less than a 10-minute walk from the Mile End campus and just a short journey to the excitement of Brick Lane and Shoreditch. **Eleanor Rosa House** is an intercollegiate hall of residence located in Stratford, home of the Queen Elizabeth Olympic Park. That means you'll be just one tube stop, or a short bicycle ride away from Queen Mary's Mile End campus. Eleanor Rosa House has en suite rooms available to Queen Mary students, and offers the opportunity to meet other University of London students.

We also offer accommodation for our Medicine and Dentistry students at our Whitechapel and Charterhouse campuses. This means you can live with people on a similar course, close to our clinical facilities.

Once you have received an offer for your programme you will be able to apply for accommodation via your applicant portal.



Learn more

About our
accommodation



**View from Queen Mary
Malta campus**
Gozo, Malta

Queen Mary beyond London

Queen Mary is a London University with a strong global outlook and presence. Our world-class academic offering goes beyond our campuses in the capital.

Malta

Students on our five-year Bachelor of Medicine, Bachelor of Surgery (MBBS) programme have the option to be taught on our stunning Malta campus, where they will have the chance to experience our London curriculum and the Mediterranean lifestyle.

The Centre for Commercial Law Studies also offers innovative postgraduate LLM programmes at our ULIP campus in the heart of Paris, where teaching and other activities are conducted in English by Queen Mary faculty and distinguished guest lecturers.

Paris

The School of Politics and International Relations offers students on its International Relations programme the chance to study in another fast-paced world city, at the University of London Institute in Paris (ULIP), where we have a thriving campus.

Singapore

Postgraduate Law students also have the opportunity to join one of our programmes delivered in partnership with Singapore Management University.



[Learn more](#)

[How to find us](#)

Careers

Professional career support and guidance are available from your first day at Queen Mary. Our Careers and Enterprise team will work with you to develop the skills and experience you need to stand out in a competitive job market – or start your own business.

The comprehensive services offered by our Careers and Enterprise team are tailored to your goals and can be applied to any step in your professional development. At Queen Mary, you will have access to many career-advancing opportunities, including networking events, careers fairs, internships and our extensive online vacancy board.

Our London location and excellent industry links mean that you'll be in a prime position to take advantage of the opportunities a world city has to offer, equipped with the right skills, experience and confidence. We will also continue to support you in your career when you leave Queen Mary.

Careers support services

We'll help you to transition successfully into your chosen career or further study through services that include:

- Employer fairs and events so that you can meet recruiters from a wide range of sectors
- Workshops to offer you insights into the job market and support your career development
- Access to a wealth of online careers information and thousands of vacancies
- Support for finding internships and part-time jobs while you study
- One-to-one appointments for expert advice on your career direction, CV and job applications, and how best to prepare for job interviews or further study
- Expert advice on starting your own business and how to secure funding. Queen Mary also supports students with a number of funding awards
- An eMentoring programme run via the Queen Mary Network
- Specialist careers consultants who work with PhD students through appointments, events and workshops to ensure that you feel supported through your research degree



91%

of our postgraduate and PhD graduates are in employment or further study within 15 months of graduating.

Graduate Outcomes
Survey 2019/20

90%

Overall,
of all our graduates are in employment or further study.

Graduate Outcomes
Survey 2020/21

19th

in the UK for universities targeted by the largest number of top employers in 2021-2022.

The Graduate Market in 2022

Enterprise support

Each year, Queen Mary offers a number of generous funding opportunities to support students in bringing business, start-up and social enterprise ideas to life. In 2021/2022 we awarded £49,000 in seed funding to help students start new businesses or grow existing ones.

We actively help student entrepreneurs through a range of activities designed to support both new and growing businesses in scaling up their ventures:

- Funding awards (of £500, £3,000 or £10,000)
- One-to-one advice and workshops
- QIncubator: an eight-week entrepreneur training programme
- QHack: a three-day entrepreneur bootcamp

Support for international students

We have specialist resources for international students so that you can tailor our year-round services to meet your needs. Connect with prospective employers and make valuable contacts at careers

events, attend talks on finding graduate work, enhance your CV by learning new skills, use our international jobs database and access guides on building a career in specific markets.

After you graduate

Our support goes beyond graduation. Whether you're planning your next career move or looking into further study, you can access our Careers and Enterprise support for three years after leaving Queen Mary.

- Have free one-to-one appointments in person, over the phone or via video call
- Attend our employer events
- Access our online resources for vacancies and for interview and psychometric test practice

Queen Mary Network

The Queen Mary Network is our online, global community platform for alumni, students, staff and prospective students. Joining the platform enables students to network and receive eMentoring from the community of over 6,100 alumni from across the globe, spanning thousands of industries and sectors.



Learn more

About Queen
Mary Network

International students

We welcome students from across the world into our global community each year. Our home is in London, but with an academic presence in China, Malta, Singapore and Paris, our students and staff collaborate, study, and live internationally. With students from over 170 countries, Queen Mary University of London is truly a global University.

Wherever you are, we'll support you every step of the way. We can help with the application process, accommodation, funding and visa guidance. Once your course has started, our staff and students will make sure you get the most out of your experience at Queen Mary.

Before you apply

We provide in-country meetings, admissions advice and online chat sessions with current students and staff and frequent webinars.

Before you arrive

We offer pre-departure briefings, frequent webinars and our International Welcome Programme. We also offer advice about accommodation, scholarships, funding, summer

schools, visas and English language requirements.

During your studies

As well as academic support, you will have constant access to support about accommodation, studying, careers and funding throughout the year, as well as all our wellbeing services.

Pre-masters graduate diplomas

Our pre-masters programmes offer bespoke preparation for masters-level study for international and EU students who don't meet the academic or language requirements for masters study, or those who want to switch disciplines.

Our diplomas give you the academic, language and study tools needed for a postgraduate

degree, including subject-specific knowledge, research, academic writing and speaking, and study skills. We offer two pre-masters programmes: Graduate Diploma in Economics and Finance and the Graduate Diploma in Humanities and Social Sciences.

Pre-sessional language programmes

Our pre-sessional programmes are for international and EU students who want to improve their English language and academic study skills before enrolling into their chosen postgraduate degree. These programmes run over the summer, and offer a stimulating learning experience in preparation for further study, with our students reporting an over 90 per cent level of satisfaction with their course.



Learn more

About our
pre-masters



Learn more

About our language
programmes



Learn more

About how to find
us in your country



Charterhouse Square

Farringdon





Facilities

At Queen Mary we offer exceptional academic facilities across all our teaching and learning facilities, including our labs, libraries, lecture theatres, IT rooms and multimedia learning resources.

We have study spaces available to support all your needs, including computer rooms, quiet study space and space for group work. Our Mile End Library is open 24 hours a day during term time.

Investing in your success

In 2017 we invested £39m in our Graduate Centre, which provides state-of-the-art study and teaching areas for our postgraduate community.

We've invested more than £250m in new facilities in the past 15 years. These include some of the largest open-plan laboratories in Europe in the Blizard Building. We are home to the UK's first new

dental facility in 40 years, with a £78m new facility within The Royal London Hospital equipped with cutting-edge technology to provide a world-leading education.

Our School of Mathematical Sciences has been transformed after an £18m project to provide an inspiring and collaborative space for staff and students.

Recent investment in the School of Biological and Behavioural Sciences has seen new research laboratories built and state-of-the-art equipment installed to help drive our world-class teaching and research.

Libraries

Following a £1.5m refurbishment, our 24-hour library in Mile End offers even more study and computer spaces. Medical and dental students can make use of the specialist medical libraries at Whitechapel, an atmospheric and beautiful neo-gothic building, and West Smithfield (site of Barts Health NHS Trust). You'll also have access to all of the University of London libraries, such as Senate House in Bloomsbury, and the libraries at UCL and King's College London.

Students' Union

Queen Mary Students' Union (QMSU) is a student-led organisation, and you automatically become a member when you join Queen Mary. QMSU is here to support you during your time at university and to make sure your voice is heard and views represented through elected student representatives. We offer hundreds of opportunities for you to get involved in, where you can make friends, spark new interests, gain additional skills and really get the most out of your Queen Mary experience.

What we provide

With over 200 diverse Societies and Sports Clubs, a volunteering service and different sports programmes, the Students'

Union offers something to suit every interest and goal. We also offer a packed programme of on-campus, London-based and online events throughout the year, alongside campaigns and projects focused on improving the Queen Mary student experience. Our dedicated postgraduate representatives are elected by students and are here to represent and support you during your time at Queen Mary. You can also get involved in our bespoke programme of events and activities for the postgraduate student community.

Students' Union Support

The Students' Union is also here to help you, point you in the right direction and provide you with support during your time at university through comprehensive academic, pastoral and wellbeing support including:

- Academic Advice Service
- Faith spaces
- Ongoing wellbeing support and campaigns
- Transferrable skills training
- Careers and employability events

We also run liberation months throughout the year, including Black History Month, LGBTQA+ History Month and Asian Heritage Month, and assist students in running their own campaigns.





Leisure facilities

Queen Mary Students' Union (QMSU) also runs a variety of on-campus spaces including social spaces, cafés, shops and bars where you can meet up with friends, take a break or grab a bite to eat after a lecture. QMSU is a registered charity, so every penny of profit goes straight back to you through their activities, campaigns and services.

Sport

Our Sport and Fitness Centre, Qmotion, is located on our Mile End campus and offers a fully equipped gym, sports hall, studio spaces and squash court across three floors. All members receive a personalised training programme every six weeks, and there are also over 25 group exercise classes a week to enjoy.

QMSU also runs over 60 sports clubs. Training and matches take place at a range of venues on-campus, at Queen Mary's sports

grounds in Chislehurst and other venues, including facilities at the nearby Olympic Park. Social Leagues are also available for those keen to take part in sport with friends or coursemates.

What's on offer?

- Over 150 societies
- Over 60 sports clubs
- Students' Union Hub social spaces
- Multi-faith centre for prayer and contemplation
- On-campus Sport and Fitness Centre
- On-campus shops, bars and cafés
- Media suite
- Regular events and activities
- Get Active turn-up-and-play sports
- Social leagues
- Elite Athlete programme
- Volunteering Service offering one-off and long-term opportunities
- Sustainability programme



Learn more

About Queen Mary
Students' Union

Student support

Community is at the heart of everything we do at Queen Mary, and the welfare of our communities is our highest priority. You can feel confident that your health, safety and wellbeing comes first, and that your academic and wellbeing needs will be met through our dedicated support services.

Supporting your study

We want you to get the most out of your time at Queen Mary. To ensure you enjoy a learning experience that positively impacts your future, every School and Institute at Queen Mary has a dedicated Student Support contact who will support you in your studies.

Within your academic School or Institute, there is a team of people who will help you to achieve your goals academically and who can support you with any personal issues.

Outside your School or Institute, Library Services run academic skills workshops for students at all levels, as well as offering one-to-one support and bespoke skills guides.

The Academic Advice Service run by Queen Mary Students' Union gives confidential advice and representation on a range of academic issues. Our libraries and IT services are vital hubs of support, providing a gateway to specialist learning resources and study space.

We also have dedicated support if you're a refugee, have been in local authority care, are estranged from your family, or are a carer. You can get in touch with us before you've applied to Queen Mary if you want support with planning your finances, the logistics of studying abroad and the practical aspects of student life.



Learn more

How we
support you



Supporting wellbeing

We offer a range of services and activities to help you maintain all aspects of your wellbeing during your time with us. In recent years, the University has invested significantly in student wellbeing services and we have an array of support available to our students.

Queen Mary's Disability and Dyslexia Service (dds.qmul.ac.uk) offers support for all students with disabilities, learning differences and mental health diagnoses from application through to graduation. The service offers students advice and guidance with securing access to funding streams like the Disabled Students' Allowance, as well as ensuring that our students have access to the reasonable adjustments to which they are entitled.

As well as adapting to the demands of postgraduate study, you will also be managing the challenges of day-to-day life. Finances, new and existing responsibilities and settling into a new environment must all be juggled alongside your studies. To ensure you maintain a strong sense of wellbeing, there are support services open to you throughout the year.

The Advice and Counselling Service offers a range of free and confidential services to help all Queen Mary students with financial, welfare and legal queries, as well as mental health, emotional and psychological

issues. This includes advice on visa and immigration issues. Our Advice and Counselling Service (qmul.ac.uk/welfare) provides support through one-to-one appointments with our counsellors, mental health advisors and student wellbeing advisors. We also have a full-time Sexual Assault and Harassment Advisor.

Our specialist Welfare Advisors (qmul.ac.uk/pg-funding) can help you identify any funding you may be eligible for. They can provide information on the Student Finance application process, tuition fees and living costs, bursaries and scholarships, and what to do if you are having financial difficulties.

Our award-winning Queen Mary Legal Advice Centre (lac.qmul.ac.uk) is open to students, staff and members of the local community. It provides free, confidential legal advice by appointment.

Health and safety

Ensuring you have an excellent, safe environment to live and study in is vitally important to us. We have invested in our campuses to ensure all appropriate safety measures are in place.

Student health

There is a free, easily-accessible Student Health Service available on our Mile End campus that provides a complete range of medical services including GP

appointments, immunisations, sexual health advice and screening, and specialist clinics.

We encourage you to register with our on-site GP service if you're based within the borough of Tower Hamlets (E1, E2, E3 and E14), and are eligible to do so. You can do this online or at the Student Health Service.

Occupational health

The Occupational Health Department focuses on the prevention of ill health related to study, working particularly with students from the Faculty of Medicine and Dentistry as the nature of their work brings them into contact with patients.

Underpinning our services is the maintenance of our facilities and spaces. These are monitored and cleaned regularly to ensure your safety and security.

Immigration advice

Welfare Advisors within the Advice and Counselling Service are trained to provide immigration advice to current students, applicants, recent graduates and their family members. They have detailed information and guidance on their website, including guidance about Student immigration permission, leaving and re-entering the UK, lost, stolen or expired passports or biometric residence permits, family members and money. You can also contact them for personalised advice.

Student finance and funding

Whatever your financial situation, we want you to fulfil your potential. Queen Mary offers a number of options to help you financially – including helping you to access external funding, in addition to a range of scholarships for academically excellent students.

Tuition fees

Tuition fees for UK, EU and international students are listed on each course's webpage.

Accommodation

We offer postgraduate students a range of housing options to suit different budgets, including single rooms, en suites, couple and family accommodation and a number of studios.

Residential fees include all energy and water costs, the cleaning of communal areas within the residences (including kitchens and shared bathrooms), Wi-Fi, and personal possessions insurance.

Managing your money

We can help you manage your budget. If you're calculating your costs, we offer detailed guidance on budgeting and money management.

Applying for financial assistance

Queen Mary offers a number of funding packages, including external funding, across a range of subjects.

We also have dedicated support if you're a refugee or asylum seeker, have been in local authority care, are estranged from your family or are a carer. You can

get in touch with us before you've applied to Queen Mary if you want support with planning your finances, the logistics of studying abroad and the practical aspects of student life.

International students

Our partnerships with external funding organisations such as Chevening, the Commonwealth Scholarship Commission and numerous governments around the world mean that we can offer support to many of our international students through scholarships and funding.



Learn more

About residence costs



Learn more

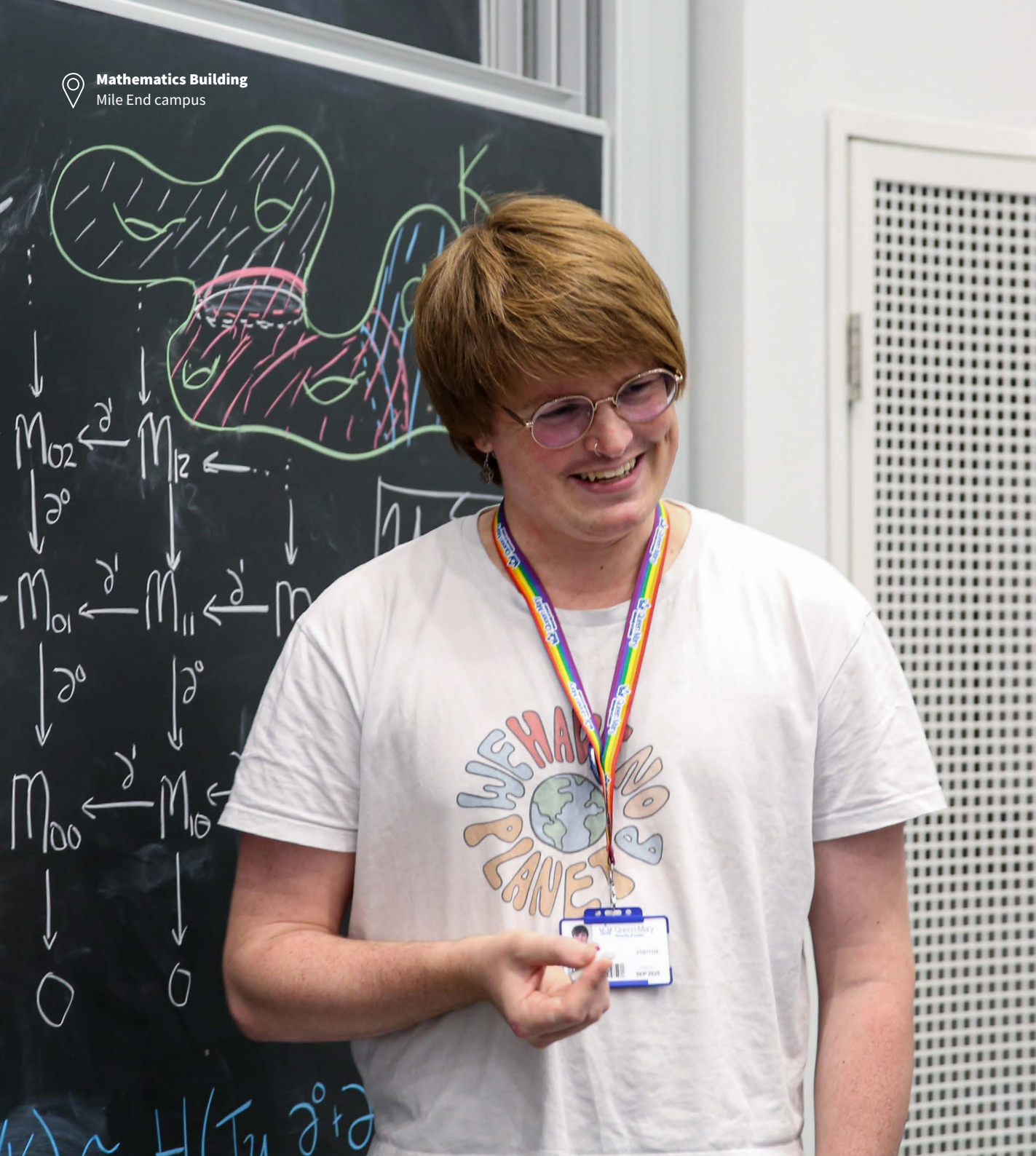
About managing your money



Learn more

About masters funding





Postgraduate Masters Loan

The Government's Postgraduate Masters Loan offers up to £11,836 per programme for eligible students for courses starting in the 2021/22 academic year. International students are not eligible for this loan. The loan is available for any full- or part-time taught masters programme as well as Masters of Research (MRes), though you won't normally be eligible if you already hold a masters degree or higher-level qualification. You can find out more information including eligibility criteria and how to apply in our Postgraduate Funding guide, which also explains other possible funding options depending on your circumstances.

Postgraduate Doctoral Loan

Eligible students enrolling in 2021/22 can borrow up to £27,892 for the whole course, with the Government's Doctoral Loan. It is available for full or part-time Doctoral degree courses including by distance learning. If you already hold a doctoral degree, you won't normally be eligible for this loan and other eligibility criteria will also apply. You can find more details in our Postgraduate Funding guide, as well as information about other possible sources of funding.



Further
information



The UK
Government's
website



Queen Mary's
Postgraduate
funding advice



Queen Mary's
Funding a Masters
webpages



Queen Mary's
Funding a PhD
webpages



Queen Mary's
scholarships
webpage



Guidance on
budgeting

Application and deadlines

Please apply as early as possible to allow enough time for your application to be considered. That's especially true if you're seeking financial support from Research Councils or other award-giving bodies.

We update the relevant course pages on our website as soon as a programme becomes full. Once this happens, we will no longer be able to consider applications.

Please note some courses may have earlier deadlines. If this is the case the earlier deadline will be published on the individual course pages on our website.

Help with overseas applications

Our Global Engagement Office have staff in the UK, China, India, Pakistan, Malaysia and USA who between them travel to over 50 countries each year to meet and support our international applicants. We also have a network of over 100 authorised representatives who can provide advice and guidance on your application to Queen Mary. You can find details of our Global Engagement Office staff and network of representatives on our country pages.

Entry requirements

Please use our programme finder to check the entry requirements for the course you're interested in.

Conversion and fast-track programmes

The Senior Status LLB (two years) is a qualifying law degree suitable for non-law graduates. It's an accelerated version of the traditional three-year route and is popular with students considering a career in law or with an academic interest in the subject.

Our Graduate Entry Medicine MBBS (four years) is designed to be a fast-track route for graduates who obtained good degrees in science or health-related subjects. The first year of study is based on the first two years of the five-year MBBS programme. For more information, contact smdadmissions@qmul.ac.uk.



Further information



Postgraduate information and programme finder



Deadlines for taught programmes



Deadlines for research programmes



International students



Library Square
Mile End campus



About our programmes

Faculty of Humanities and Social Sciences

Humanities and Social Sciences

Business and Management	42
Economics and Finance	44
English and Drama	46
Geography	48
History	50
Languages, Linguistics and Film	52
Law	54
Politics and International Relations	56

Science and Engineering

Biological and Behavioural Sciences	58
Computer Science and Electronic Engineering	60
Engineering and Materials Science	62
Mathematical Sciences	64
Physical and Chemical Sciences	66

Medicine and Dentistry

Barts Cancer Institute	68
Blizard Institute	70
Dentistry	72
Institute of Health Sciences Education	74
William Harvey Research Institute	76
Wolfson Institute of Population Health	78

Business and Management

There are few areas of 21st-century life not touched by business and management. Our approach to the field of business management examines the increasingly important connections between management, organisation, business life and the contemporary world while maintaining a strong focus on management education.

A business school with a difference

Business and Management at Queen Mary takes an approach to teaching and research that is underpinned by the values of social justice, sustainability, good governance, and the UN Principles for Responsible Management Education. We aim to create responsible future leaders with the know-how to analyse problems and present innovative solutions.

Career progression

Our postgraduate students are sought after by a range of employers.

Recent postgraduates have progressed into careers such as:

- Asset management
- Chartered and certified accountants
- Finance investment analysts and advisors
- Management consultants
- Marketing consultants
- Business analysts
- Entrepreneurs
- Banking

In companies such as:

- Deloitte
- Ernst & Young
- Environmental Defense Fund
- KPMG
- Capco New York
- Photobox
- Bank of China
- IBM
- United Nations Development Programme
- Facebook
- Bloomberg
- JP Morgan
- John Lewis
- Chanel
- ITV

Our research

Since it was founded, the School of Business and Management has produced research of a significant positive social and economic impact. Our academics are members of the Centre of Research in Equality and Diversity, a prominent international group that is at the forefront of equality and diversity research. The Centre addresses issues including gender and sexuality in male-dominated professions and the implementation of the Equality Act 2010.

The School is also home to the Centre for Globalisation Research, which conducts research around the themes of political economy and macroeconomics; development, inequality and poverty; and business analytics, innovation and networks. Our postgraduate programmes offer a structured route to exploring these key issues and connections. You will develop a portfolio of valuable skills and enhance your career opportunities.

Our alumni

"I chose Queen Mary because it provided me with a very fitting course and exactly what I was looking for. The course not only helped me hone my skills, but it also helped me realise my potential. The curriculum is designed in a way that helped me prepare for the real world and gain the knowledge I needed to attract the right opportunities. I have been able to gain a more holistic understanding and develop an international perspective of my subject."

Priya Rathore
(MSc Management, 2022)



We are home to the **first student-led social impact venture capital fund** in the UK

82%

of our research was
judged as world-leading
or internationally excellent
(Times Higher Education
2022)



Learn more

About our
Postgraduate
programmes

Economics and Finance

A centre of excellence in research and teaching, the School of Economics and Finance is home to a diverse community of faculty and students.

We provide a solid foundation in economic and financial theory and practice, driven by research-led teaching from experts in the field. You will be studying at the cutting-edge of your discipline and have access to a wide range of extra-curricular activities to enhance your learning experience.

Our facilities

As a student, you will have access to the same industry software and major statistical databases as real-life traders tracking the stock market, economists in government, think tanks and major consultancies, which will be of huge benefit to your future career and professional development.

As one of a few UK universities with a Trading and Behavioural Lab containing Bloomberg trading terminals, we have been recognised as a Bloomberg Experiential Learning Partner, in acknowledgment of the School's integration of experiential learning

into our curricula. In addition, you will have access to FXCM FX Trading Stations, Interactive Brokers Trader Workstations (used for finance data analysis and simulation) and free access to popular industry publications.

Professional accreditation

The School is affiliated with the Chartered Financial Analyst (CFA) Institute, with many of our masters programmes offering a CFA pathway. Our association with professional bodies signals to employers that the School's curriculum is closely tied to professional practice, providing students with an important competitive edge in the job market.

Student enterprise

Based in the School of Economics and Finance, the Queen Mary MSc Investment Fund is a fund that currently has responsibility for over £40,000 of investments. Established for postgraduate students, the investment fund provides the opportunity for students interested in obtaining relevant, practical work experience in trading and portfolio analysis to apply their knowledge and skills in a real environment.

Career progression

The School has a dedicated team of careers and employability professionals to support our postgraduate students to achieve their dream careers. Providing one-to-one advice, networking events, mock interviews/assessment centres, skill and knowledge development sessions and much more, our graduates are well prepared for the world of work.

Graduates from the School of Economics and Finance enter into a wide range of careers, including roles at large financial organisations such as JP Morgan, Goldman Sachs, and Credit Suisse and professional services firms such as EY, PwC, Deloitte and KPMG. Equipped with the skills for a wide variety of roles, you could follow in the footsteps of our alumni as Finance and Investment Analysts, Taxation Experts, Economists, Consultants and many other career routes.



Our alumni

"Queen Mary was my first choice since the beginning due to its rich and extraordinary courses offered on top of the main curriculum subjects. Located close to the financial district, it offers many opportunities to practice the theoretical concepts acquired during your studies. Everything is well-organised and the professors' careers show a deep knowledge and understanding of the financial world."

Nicholas Paduano
(MSc Finance, 2019)



Our alumni

"I always wanted to study in London as it is a leading global financial centre and a city full of opportunities. While doing my research, I found that the courses offered by the School of Economics and Finance were among the best in the UK. Also, facilities provided by the School such as access to the Bloomberg Terminal, free subscription to publications like Financial Times and networking events with employers from top UK companies acted as a great aid to me."

Goshilla Maroam
(MSc Investment and Finance, 2019)

#4

in the UK for **research outputs in Economics and Econometrics** (Research Excellence Framework 2021)



Learn more

About the School of Economics and Finance

English and Drama



The School of English and Drama is a dynamic and inclusive learning environment, led by world-renowned artists, academics, writers and practitioners. We combine cutting-edge research and teaching with a commitment to community and social change.

By challenging norms, championing marginalised voices, and exposing our students to a breadth of material, we improve lives and foster understanding of complex issues.

Career progression

Our masters courses train critical thinkers, artists and writers, placing you at the forefront of critical theory and providing you with a wide range of academic and transferable skills. The experience cultivated on our courses are increasingly valued by employers in such sectors as secondary and higher education, creative and cultural industries, performing arts, arts management, marketing, digital media, journalism and publishing.

Our research

Our large English department has a wide range of research areas to help you with your research, with a particular focus on Eighteenth Century and Romanticism, the Victorian Period, Modernism and Early Twentieth Century, Contemporary, Postcolonial and World Literatures, and Creative Writing.

In the most recent Research Excellence Framework (REF) 2021, our Drama department was ranked first in the UK for the quality of our research. Our academics are experts in the fields of socially applied performance, arts and mental health, live art and critical approaches to theatre.

What makes our degrees different

MA English Literature

- This is a genuinely trans-historical course, providing in-depth coverage of many literary periods, genres and styles
- You will learn from supportive experts in many different fields of English Literature
- You will also gain analytic, communication and research skills valuable for your career

We have expert staff in these literary areas:

- Literature and Culture: 1700-1900
- Modern and Contemporary
- Postcolonial and Global Literatures

MA Theatre and Performance

- You will work with our internationally respected academic artists, academics and writers
- You will attend lectures, workshops, and mentoring sessions with visiting artists throughout your studies
- You will also see the latest in contemporary theatre, from warehouse raves to productions at international institutions like the Old Vic

MA Creative Writing

- You will work with our professional writers to create your own work
- You will get insight into careers with your writing in our Creative Writing in the Professions module



Our alumni

"The staff in the School of English and Drama are all genuinely interested in you as a student and your studies. That level of care is what drew me back to do my MA at Queen Mary. It's an environment that encourages experimentation, growth and diversity of thought."

Annabelle Sami
(MA English Literature, 2018)

#1

Drama is ranked number 1 for research in the UK (REF 2021)

#6

Creative Writing is number 6 in the UK (The Times and Sunday Times Good University Guide 2022)



Learn more

About English
Postgraduate study



Learn more

About Drama
Postgraduate study

Geography



Geography has been taught at Queen Mary since 1894, making us one of the longest-established Schools of Geography in the UK.

We offer a range of masters programmes in geography and environmental science, drawing on a diverse collective expertise to tackle some of the greatest challenges of the 21st century, including international development, global health, migration and the sustainable management of aquatic environments.

As the world of work grows more competitive, masters study offers an exciting opportunity to explore a subject you are passionate about and enhance your career prospects.

Students choose our masters programmes for a range of reasons:

- to engage deeply with a subject they are passionate about

- to increase their employability in a specialist field
- to prepare for a PhD and academic/ research career
- to facilitate a career change
- to advance their existing career.

At the School of Geography, we recognise these different needs and offer an array of specialist masters programmes that reflect our expertise in development, global health, urban cultures, and environmental science.

Our programmes maximise opportunities to develop strong links between academic and external organisations to benefit research, learning and the wider community. Students on all of our masters programmes actively engage with a range of external organisations – from museums and galleries (London Studies MA, Cities and Cultures MA) to overseas development organisations (Global Development Futures MA, Development and Global Health MA) and the water and environmental sector (Integrated Management of Freshwater

Environments MSc). The most important thing is to choose a masters programme that best matches your interests and career plans.

All of our masters degrees are available on a full-time or part-time basis (one year full-time/two years part-time).

Career progression

Our graduates have established careers in the water and environment sector, within government agencies, charities and consultancies, have undertaken PhDs and secured jobs with NGOs, development organisations, government departments and private companies. Graduate destinations include Affinity Water, Environment Agency, Rivers Trusts, Jacobs, Citizens Foundation, Fairtrade International and Engage Hub.

Our alumni

"I chose to study at Queen Mary as the Geography department has a very good reputation for teaching and research. The course also appealed to me as it suited my particular interest in rivers, with a wide variety of topics covered within the course programme. I felt that each of the modules would be useful in some way for most jobs in the industry. My course gave me the ideal preparation for the job I am in now, as it covered all the aspects of river monitoring and management which I am expected to know for my job. It also gave me experience of report writing and time management skills, as well as valuable experience with conducting field work and laboratory analyses."

Anneka Johnson-Marshall, Asset Scientist at Affinity Water (MSc Environmental Science: Integrated Management of Freshwater Environments 2015 - the predecessor to our MSc Water and Environmental Management)



The School of Geography is ranked **10th for its research outputs** among every higher education institution in the UK (REF 2021)

93%

of our **research outputs** is considered world-leading or internationally excellent (Times Higher Education 2022)



Learn more

About our
Postgraduate
programmes

History



The School of History was founded in 1912 to teach history and undertake world-class research. More than a century later, we continue to combine these crucial elements of the historian's craft to develop our expertise about the past, and to understand our current and future responsibilities, through a diverse range of historical periods, figures and outlooks.

Our two postgraduate degree programmes allow you to specialise in either History or in the History of Political Thought and Intellectual History, a programme that is taught collaboratively with UCL.

Career progression

School of History graduates go on to build successful careers in both the private and public sector, and in national and international organisations.

Recent examples include:

- The BBC
- In publishing, at prestigious academic presses like Polity Press

- In finance, for example at BNP Paribas and Ernst & Young
- As political advisors in Westminster and the European Parliament
- Congressional campaigns in the US
- At NGOs like Global Witness
- At nonprofits such as Oxfam and The Center for Global Development
- As researchers
- In teaching

With the skillset that a History programme equips you with, many of our graduates have continued onto PhD programmes or are in academia—both in London and at a variety of other institutions from Oxford and Cambridge, to Berkeley and Yale.

These include:

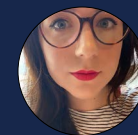
- Dr Signy Gutnick Allen, LSE Fellow in Political Theory and former Associate Lecturer in Political Theory at the University of York (MA History of Political Thought and Intellectual History)
- Dr Paul Sagar, Lecturer in Political Theory, King's College London (MA History of Political Thought and Intellectual History)

Collaborative teaching

Our MA History of Political Thought and Intellectual History is an intercollegiate University of London programme jointly administered and awarded by University College London and Queen Mary. The MA draws on the expertise of staff from the wider University of London, as well as leading academics at Queen Mary. The programme offers advanced training in intellectual history, the history of political thought and the history of philosophy, spanning the period from the ancient world to the 21st century.

A unique focus on graduate employability

Our MA History offers an intensive research training programme, which includes the chance to specialise in one of eight historical fields. It also includes a unique internship option, giving invaluable real-world experience and transferable employability skills through a placement with one of our public history or heritage partners. The teaching for all MA components, including the dissertation, are completed by early summer, facilitating entry into the summer job market.



Our alumni

"Queen Mary has shaped the way I think about the past, the future and my confidence in myself and what I can achieve through dedicating time, passion and knowledge to the things I'm truly interested in."

Phoebe Cousins
(MA History, 2017)



Our alumni

"If we are honest, in your career you spend a lot of time trying to persuade people – both junior and senior to you – about something. Understanding the structure of arguments, which is essentially what you learn in the history of thought, is so useful when it comes to influencing people. Also, my work has always involved communications and copywriting, and having to digest, reconstruct and critique complicated theories in succinct, accessible language was a great training ground for the future."

Andrew Hyams
(MA History of Political Thought and Intellectual History, 2013)

#7

in the UK for **research outputs** (Research Excellence Framework 2021)



Learn more

About the
School of History

Languages, Linguistics and Film

The School of Languages, Linguistics and Film explores global culture through five distinct but intrinsically linked areas of academic and research excellence, within a vibrant interdisciplinary environment, creating a multilingual community with deep cultural appreciation and universal impact.

Our research

Our expertise encompasses a distinctive combination of areas including formal linguistics, experimental linguistics and sociolinguistics. We combine research excellence with an unrivalled commitment to social justice and social mobility. For example, our academics have researched accent bias in job interviews, and have also worked to enhance public understanding of palliative care through film.

Career progression

Graduates have gone to establish successful careers across a range of industries and sectors; as writers and directors, speech and language therapists in the healthcare sector, and teachers and lecturers in universities.

Our facilities

Home to acclaimed academics and cutting-edge research facilities (including the fully accessible BLOC cinema suite and interdisciplinary Centre for Film and Ethics) our Film department attracts the most exciting filmmakers and thinkers of the day. Our Linguistics department houses state-of-the-art research facilities including a Phonetics lab, a Language Acquisition lab, and a Postgraduate Research Centre.

Our alumni

"I liked the structure of the programme as it gave me the chance to tailor the course to meet my interests; but, fundamentally, I chose Queen Mary because of its staff. All of the professors and lecturers in the Linguistics department are world-renowned in their field."

**Dr Melisa Rinaldi, Academic Developer at
Centre for Excellence in Learning and Teaching
(MA Linguistics, 2014 and PhD, 2018)**



Modern Languages ranked **internationally excellent**, among the UK's top 20 in the Research Excellence Framework 2021 (REF)

#1

Linguistics ranked **first** for research outputs for third time running (REF 2021)



Learn more

About the School of
Language, Linguistics
and Film

Law



We are proud of our reputation as a world leading postgraduate law school, ranked 26th in the world by the QS World University Rankings by Subject 2022. Part of our School of Law, Queen Mary's Centre for Commercial Law Studies, is in London's historic legal centre at Lincoln's Inn Fields.

The Centre for Commercial Law Studies (CCLS) attracts a diverse student body from nearly a hundred countries. Our students join us to study one of 20 LLM programmes delivered in London, at the University of London Institute in Paris, and in Singapore*, as well as unique distance learning offerings. Combining excellence in teaching and research across both commercial and non-commercial disciplines, we strive to be at the forefront of legal scholarship and law reform.

*Collaborative partnership with Singapore Management University

Career progression

Our graduates progress into careers in the UK and around the world, with a large number working as solicitors, barristers, lawyers, legal associates or paralegals. Others move into finance, regulation, policy, compliance, consultancy, patents and trademarks.

Our dedicated careers and development team offer employability support to our students during their time at CCLS. Our mentoring programme matches students with mentors from a range of legal professions, including current and former Lord Justices of Appeal, senior partners and legal professionals at leading firms, including Allen & Overy, Cooley LLP, eBay (UK) Ltd, The Walt Disney Company, Shell, Preiskel & Co, Promontory Financial Group and others.

Our award-winning qLegal programme also offers students the opportunity to gain experience within a working legal clinic providing free legal advice and resources to start-ups and entrepreneurs. Being part

of the qLegal programme is not only an excellent way to enhance employability but also forms great networks and life-long friendships for students.

Our research and impact

Through ground-breaking research and advocacy work, our experts help shape policies and practice nationally and internationally. For example, our pioneering Cloud Legal Project (CLP) was launched in 2009 and undertakes research in complex areas of law and regulation that are essential to the successful development and use of cloud computing services. The impact of CLP on industry has been huge. CLP's research covers a wide range of topics, including governance of cloud services, cloud contracts, blockchain technology, data protection and privacy in Africa, cloud robotics, taxation of cloud providers and services and the legal status of online digital assets.

Our alumni

"Being a student legal advisor at the qLegal pro bono clinic was an insightful experience that helped me a lot in my career and gave me an insight into how businesses operate. It is very rare to see a university giving students the ability to increase their commercial awareness through pro bono clinics. I also had the ability to develop transferable skills such as advocacy and communication skills whilst presenting a webinar.

Gaining a deeper understanding of my specialisation helped me develop transferable skills such as commercial awareness that helped my career a lot. Thanks to this experience, the support of professors, and the Careers Team, I was successfully selected to attend an open day at an American law firm in 2020. This year, I was also selected for a competitive mentoring program at a Magic Circle firm that only takes ten people."

Emilia Tambwe Tshomba
(LLM International Business Law, 2021)

87%

of research activity
classified as internationally
renowned or world-
leading (Times Higher
Education 2022)



Learn more

About our
postgraduate
programmes

Politics and International Relations



Study in an outstanding and dynamic research environment, where you will help to tackle the critical issues facing politics today, on a local and global level.

The School of Politics and International Relations is home to leading active researchers with diverse interests. From the Middle East to British politics, their expertise is reflected in our high-level teaching and across the breadth of our programmes.

From distance learning to campus-based teaching, full time or part time, we offer a range of study modes to suit different schedules across a number of programmes. We also offer an International Relations programme at the University of London Institute in Paris. Our London location and proximity to Westminster puts you at the political heart of the UK and provides access to industry experts through our stimulating research seminars and lectures.

Career progression

Our graduates go on to build successful careers in the private and public sector, and in national and international government organisations. Recent examples include Oxfam, Ernst & Young, BNP Paribas, Civil Service, and The Center for Global Development.

As a student here, you'll have the chance to join in with the lively events delivered by high-profile speakers at the Mile End Institute, a major discussion forum that brings you closer to distinguished figures from the world of politics.

Tailored careers support is available to you via Careers Consultants and Student Employability Advisors for career planning, application and CV writing, interview practice and more.



Our alumni

"What was particularly amazing at Queen Mary was the diversity in our classroom. I studied with students from literally all around the world, and they brought their own experiences of public policy practice to the classroom, whether it was in class discussions or group projects.

in Pakistan. My masters thesis was on the Paris Agreement and Climate Change, so my time at Queen Mary, and the understanding of global climate governance definitely play a role in my professional life."

Maha Kamal
(MSc International Public Policy, 2016)

At the moment I'm a consultant for the World Bank working on climate governance at the sub-national level

Top seven

in the UK for the excellence of its published work research intensity (Research Excellence Framework 2021)



Supportive learning environment

Our staff have regular 'office hours' to discuss student feedback and progress



Learn more

About our
Postgraduate
programmes



Learn more

About the Politics
and International
Relations Hub

Biological and Behavioural Sciences



The School of Biological and Behavioural Sciences combines the academic rigour of a leading department with a vibrant research culture, alongside a friendly and lively study environment.

Teaching is influenced by world-class research and our staff regularly produce work in high impact journals like Nature, Science, Lancet Psychiatry and leading specialist journals.

Careers progression

Graduates progress to careers in industry, conservation, environmental organisations and academia worldwide. Examples include:

- Lead Generation Specialist, Illumina
- Communications Officer, European Geosciences Union
- Botanical Horticulturalist at Royal Botanic Gardens, Kew
- Lead Marine Adviser, Natural England
- Curator at the NHM
- Bioinformatician at European Bioinformatics Institute
- Assistant Technologist (Mental Health) at Barts Health Trust
- Biomedical Scientist at Max Planck Institute

- Many of our graduates also do PhDs, where our programmes make students internationally competitive.

Global fieldwork opportunities

Our inspiring fieldwork course portfolio offers students the chance to visit locations such as Borneo, Madagascar and Cape Verde. Our MSc student Oliver Gaskin said: "Our field trip to Danum Valley Conservation Area in Borneo was an amazing experience. During our visit we witnessed an incredible variety of wildlife, from waking to the sound of gibbons, to hearing the shouting of cicadas every evening. In addition, the ecological sampling techniques we learned will undoubtedly be an asset for the future."

Our facilities

A new £39m Graduate Centre provides quality teaching and learning spaces, and our G.E. Fogg Building has state-of-the-art laboratories and equipment. You'll have access to analytical facilities for ecological or biomedical studies. These include our field station, the River Laboratory in Dorset, imaging facilities including confocal and EM microscopes, genomics labs, electroencephalography and behavioural labs and bioinformatics infrastructure, including a 1,800-core computing cluster.

Our research

In the recent Research Excellence Framework 2021, 100 per cent of our School's biology research impact was rated either world-leading or internationally excellent. Examples of such research include the work of Professor Christophe Eizaguirre, who used genetic analysis of loggerhead turtles to develop an effective conservation strategy, and Dr Iwan Jones, who informed a targeted land management scheme to reduce pollution in Wales.

We have particularly strong links with Royal Botanic Gardens, Kew, with access to the most diverse collections of plants and fungi anywhere in the world. We also collaborate with the Institute of Zoology, the Natural History Museum, environmental organisations such as the Environment Agency, conservation charities, DEFRA, and industry, such as GlaxoSmithKline, Proctor & Gamble, AstraZeneca and Syngenta.

We offer a large range of research projects which will prepare you for careers in such places and provide transferable skills essential for any professional career.



Our alumni

"We had a really tight-knit community on my course and I'm still close with many of them a year on. You rely on each other a lot in the MSc and there were lots of opportunities to make friends through group projects."

There are a huge range of taught modules at the beginning of the course, so you learn a bit of everything. This breadth of knowledge is very useful to find a career. When you start your six-month research project, you learn to hone your skills and interests and that is where you find the drive for what you want to do as a career."

Sahr Mian,
Research Assistant at Royal Botanic Gardens, Kew
(MSc Plant and Fungal Taxonomy, Diversity and Conservation, 2019)

98%

of the School's postgraduate graduates are in employment or further study within 15 months of graduating (Graduate Outcomes Survey 2019/20)

91%

of our Biological Sciences research is either world-leading or internationally excellent (Times Higher Education 2022)



Learn more

About our
Postgraduate
programmes

Computer Science and Electronic Engineering

With expertise spanning a range of technologies, the School of Electronic Engineering and Computer Science undertakes high-quality research that improves lives. The Research Excellence Framework (REF) 2021 ranked our Computer Science research joint first in the UK for impact, and our Engineering research 2nd in the UK for output.

Our range of MSc programmes develops your practical skills and knowledge, preparing you for your chosen career. During your MSc, you'll be taught by national and international research leaders, and involved in international research collaborations with some of the world's leading companies. This keeps our modules up to date and relevant to industry. Whichever programme you decide to undertake, you will gain an advanced and thorough understanding of your chosen field.

We offer a vibrant and multi-disciplinary learning environment with a large and diverse student community and strong industry links, where teaching is always exciting and relevant. We pride ourselves

on our impactful research, excellent facilities and innovative educators.

Career progression

The average salary for our MSc students fifteen months after graduation is £40,923. The demand for skilled graduates in the areas of computer science and electronic engineering is significantly increasing across a variety of sectors and industries, offering graduates a wide range of careers to choose from.

Our postgraduates have moved into a range of exciting and rewarding roles, equipped with a broad range of skills gained through our programmes, extra-curricular activities and work experience. Examples of roles include Software Engineer, AI Engineer, Audio Software Developer, Data Scientist, Digital Electronic Hardware Designer, and Interactive Systems Developer at organisations such as Sky, KPMG, Samsung, ITV, Meta, Vodafone and Orbium.

Our research

Our research groups include Antennas, Cognitive Science, Digital Music, Game AI, Intelligent Sensing, Robotics and Theory, with over 425 researchers from more than 50 countries. We are established as a centre of national and international excellence in

research. In the recent REF 2021, 99 per cent of our research was ranked world-leading or internationally excellent.

As well as teaching you, our lecturers are making a significant difference in the world around us. Our academics are researching ways to improve the battery life of electric vehicles, developing a digital music platform that offers new opportunities for disabled musicians and designing artificial intelligence to help doctors better communicate with patients. We also have excellent links with industry, working together on commercial and research projects. In addition, researchers in the School have also developed several sustainable spin-out companies with a combined value of over £50 million.

Whichever programme you choose, you will be taught by internationally recognised staff. Being taught by someone who is changing the world with their ideas ensures that our programmes are up-to-date and relevant.



Our alumni

"I studied Computer Science at Queen Mary whilst working full time in Defence. When I think about Queen Mary, I remember the helpful lecturers, the interesting workload, up to date IT software and systems and overall great student support.

I loved studying my degree as it grew my understanding of different subjects that are important in the tech industry. These are all areas that I find to be very important in my day to day work.

Overall, I was very surprised by the support of lecturers. Working full-time and studying part-time was very stressful to say the least, and I found that my lecturers cared about my situation and would offer great support when needed. This made my overall experience at Queen Mary amazing."

**Maryanne Maira, Customer Data Scientist
(MSc Computer Science, 2020)**

98%

of postgraduate graduates are employed in highly skilled jobs or graduate study 15 months after graduation (Graduate Outcomes Survey 2019/20)



Learn more

About our Postgraduate programmes



Learn more

About our research

Engineering and Materials Science



Throughout its history, the School of Engineering and Materials Science has brought together pioneering minds from the scientific community to make significant impacts and advancements. We were the first in the UK to teach Aeronautical Engineering and the first to establish a Materials Science department.

Our staff lead the way in fields such as sustainable energy and medical innovation: developing technology to better harness energy from waves, repairing foetal membrane defects to reduce preterm births and prevent early deaths in babies, and pioneering new innovative biomaterials now improving the lives of thousands of patients worldwide.

Career progression

Our programmes lead to rewarding careers that make a real difference to the world. Students have gone on to work for companies such as Siemens, Jaguar, Land Rover and Accenture, as well as on to pursue PhD study. Those who choose a career in

industry have progressed to positions including Data Scientist, Programming Analyst and Geophysicist in organisations including HSBC, Tech Alchemy and natural gas companies.

Our facilities

We have recently spent over £30m upgrading our laboratory spaces. The Internal Combustion Engine laboratory focuses on engine performance testing and emissions.

The laboratory of the Centre for Advanced Robotics is equipped with robotic arms, mobile platforms, mechatronic and control systems, artificial intelligence, swarm robots, human-like robotic systems, virtual reality and haptic interfaces, and a human motion tracking system.

Our Aerospace laboratory houses a flight simulator with a cockpit, fully moving-base platform, virtual vision simulation for a range of visual cueing systems, image processing techniques for the flow field, advanced optical flow diagnostic tools and a unique wind tunnel for the study of laminar flow and its active control. External organisations such as Airbus and the US Airforce are users of these facilities.

The NanoVision Centre in Materials Engineering is a multi-million pound microscope unit, bringing together the latest imaging technologies to open up new avenues for cutting-edge research. This multidisciplinary facility is unparalleled in the UK, combining high-resolution imaging with structural, chemical and mechanical analysis.

Our research

Through research excellence, our academics have improved the outcomes for hundreds of patients worldwide. For example, Dr Karin Hing and her team at Queen Mary are engineering materials that encourage bone growth when used in complex orthopaedic surgeries.

In 2019, Royal Mail launched six stamps to mark 50 years of innovation in British engineering and Dr Hing's work was featured in one of the six stamps. Dr Hing's stamp depicts a close-up of the synthetic bone graft with an example of where bone grafts are commonly used to support bone regeneration in orthopaedic surgery.

Our alumni

"I was surprised at how diverse the students at Queen Mary are. Even though we come from different backgrounds, people are friendly and willing to help you out.

Being a student in the School of Engineering and Materials Science has been eye opening as I feel I have been exposed to more information on the industry and possible careers. I have enjoyed creating a community of friends and building long-lasting relationships.

My studies have made me very resilient and I have become a quick and independent learner."

Donna Otchere
(MSc Advanced Mechanical Engineering, 2022)

#2

We ranked **second for quality of research outputs** in the Research Excellence Framework 2021 (REF)

#7

Our Engineering research is **ranked seventh** out of 89 **in the UK** (REF 2021)



Learn more

About the School of Engineering and Materials Science

Mathematical Sciences

The School of Mathematical Sciences offers a diverse, international community of like-minded, intellectually curious students who use both logic and creativity to solve big 21st-century problems in a unique learning environment.

It's a supportive community too. We work together to achieve goals, with our world-leading academics here to inspire you and the opportunity to experience our award-winning Mathematics Society.

Career progression

Our flexible and wide range of abstract and real-world programmes from MSc Mathematics to MSc Data Analytics and MSc Financial Mathematics, allows you to shape your own career path and join our esteemed alumni who have gone on to work in research, and for prestigious organisations such as PwC, Santander, HM Revenue and Customs, Deutsche Bank and the NHS.

Our research

Our School is home to eight research groups, spanning a diverse range of mathematical disciplines from Algebra and Number Theory to Statistics and Data Science. We are proud of the brilliant breakthroughs our researchers have made in recent years, including the use of mathematical modelling in cancer research and to reduce the number of malaria deaths in Africa.

Our facilities

With one of the largest academic staff in the UK and our recently refurbished £18m Mathematics building with state-of-the-art facilities, teaching and study spaces, we invest in our students and provide the perfect environment for them to thrive in. Our building includes a modern lecture theatre, high-quality teaching rooms, private and group study areas, a dedicated learning space for postgraduate students and a computing lab. The lab, fit with 42 computers, includes access to Bloomberg terminals, providing all our postgraduate students with the opportunity to take the Bloomberg Market Concepts qualification. This software is used in the finance industry for the provision and analysis of financial market data and news.



Our alumni

"I enjoy the fact that I can use so many different types of statistical software such as R, SAS, Excel and Python. It is a very challenging degree, but very rewarding as you will learn how to programme. Data Analysis is very sought after by employers in most fields now, not only because there is

a gap in the market, but because data is everywhere. Everything is mostly computer-based, so knowing how to code will give you an edge."

Mateusz Dawidowski
(MSc Data Analytics)

#12

We ranked **12th in the UK** (QS World University Rankings by Subject 2022)

97%

of postgraduate graduates are employed in highly skilled jobs 15 months after graduation (Graduate Outcomes Survey 2019/20)



Learn more

About our
Postgraduate
programmes



Learn more

About our MSc
in Data Analytics
programme

Physical and Chemical Sciences



Throughout its 100-year history, the School of Physical and Chemical Sciences has brought people together to foster world-changing discoveries. We remain at the forefront of some of the most exciting discoveries of the last century, such as the existence of Proxima b, the closest exoplanet to Earth, and the development of novel 'green' solutions in construction.

Physics

Our portfolio of MSc programmes covers topics ranging from nanoscale and functional materials, through the fundamental properties of the universe to its darkest reaches. You will develop key research and analytical skills that prepare you for your next steps in further research or in your chosen career. During your MSc, you can take advantage of our collaborations and networks, such as GRADnet. This offers a wide range of advanced physics and professional skills training relevant to postgraduate physicists.

Chemistry

Our Chemical Research MSc is designed by world-renowned academics and provides excellent preparation for PhD study or a career in the chemical industry. We're proud of the links this programme has to chemical enterprises of all sizes, including AstraZeneca, GSK and Pfizer. As a research-led programme, you will join an active research group within the School to work on your own project.

Career progression

Our graduates have gone on to pursue PhD study at renowned institutions including Stony Brook University, New York University and the University of Oxford. Those who choose a career in industry have progressed to positions including Data Scientist, Programming Analyst and Geophysicist in organisations including HSBC, Tech Alchemy and natural gas companies.

Facilities

Our Physics students benefit from the experimental equipment available in our range of research labs and our own rooftop observatory. A recent £5.2m

investment in our Chemistry Laboratory facilities modernised them to align more closely with commercial labs, as part of our commitment to preparing you for the next steps in your career.

Our research

From pioneering work on the optimisation of drug delivery, to the international collaboration jointly responsible for the Nobel Prize-winning discovery of the Higgs boson, our academic accomplishments capture headlines and showcase the diversity of our expertise across a range of areas in the fields of physics and chemistry.

We played a significant role in the discoveries of W and Z bosons and Proxima b, the closest Earth-like exoplanet to us. We also played a part in the first 'superstring revolution'. Our vibrant Chemistry Department carries out cutting-edge research such as Functional Materials and Nanoscience, Synthesis, Catalysis and Physical and Computational Chemistry.



Our alumni

"In this role, I combine my passion for physics and technology to solve real-world problems for our clients. We make use of state-of-the-art algorithms and processing techniques to form high resolution images of the subsurface of the Earth.

In doing both a BSc and MSc in Astrophysics, it's really taught me how to go about learning. That is, taking new concepts like those I now find in Geophysics, breaking them down into the fundamentals and drawing on my general physics knowledge, researching and reading up where needed to understand and learn about something new.

Another key skill which I regularly make use of is coding. Having learnt the fundamentals of Python at university during my research projects has been hugely beneficial. It's allowed me to tackle some otherwise insurmountable problems neatly and quickly using scripts developed on the fly."

Bradley Cooper-Barnard, Geophysicist at CGG (MSc Astrophysics, 2019)



Three of Queen Mary's **Nobel Prize winners** are linked to Physics



Chemistry ranked **8th for Research Impact and 9th for research outputs** in the UK (Research Excellence Framework 2021)



Learn more

About our Postgraduate programmes

Barts Cancer Institute



Barts Cancer Institute (BCI) is a leading UK cancer research institute, with the overriding objective of ensuring that our research is relevant to and will impact on cancer patients. Our scientists and clinicians create an exciting grouping of expertise dedicated to clinical cancer care, cancer research and excellence in teaching.

BCI was created in 2003 and brought together some of the most eminent cancer research teams in London. Today, BCI is one of four partners in the Cancer Research UK City of London Centre, a world-class hub dedicated to cancer biotherapeutics.

We offer an exceptional learning experience, exposure to modern techniques and state-of-the-art laboratories that enable our students to further their understanding, research and career development in the field of cancer or surgical skills.

Career progression

Our graduates work in a range of medical, biomedical and scientific roles in hospitals and NHS Trusts, universities, pharmaceutical companies and the wider healthcare sectors, while a large proportion are undertaking further study or research (Graduate Outcomes Survey 2019/20).

Our research

BCI researchers have discovered a blood test that accurately detects the presence of aggressive prostate cancer - the most common cancer in Western men. Professor Yong-Jie Lu said: "We were able to detect prostate cancer with the highest level of accuracy ever seen in any biomarker test, which could spare many patients unnecessary biopsies. This could lead to a paradigm shift in the way we diagnose prostate cancer."

Another BCI study suggests that a simple blood test could help to monitor pancreatic cancer patients. Professor Claude Chelala explains: "This proof-of-principle study highlights the potential of using blood tests... which could help to guide precision medicine-based approaches tailored to each patient's cancer."

Our academics

Professor Nick Lemoine is Director of the Barts Cancer Institute and a world leader in pancreatic cancer research. Pancreatic cancer is hard to treat, and patients' outlook is generally poor; his pioneering work seeks to address this. He also works with colleagues on the development of oncolytic virotherapy, an approach that uses adenoviruses and vaccinia viruses that selectively replicate within and kill cancer cells but leave normal cells untouched. His research has been funded by programme grants from the Medical Research Council, Cancer Research UK, Digestive Cancer Campaign and the European Union.

Professor Lemoine received a CBE in the 2022 New Year Honours List. The award particularly recognised the work undertaken during Covid-19 in his role as Medical Director of the National Institute of Health Research Clinical Research Network. Professor Lemoine chaired the NIHR's Urgent Public Health group to identify and deliver a range of Covid-19 studies, and the long Covid funding committee, which has seen more than £50m invested into 19 studies on this emerging disease.



Our alumni

"The first thing I enjoyed was the interaction between students and lecturers as well as the support provided by the Teaching Office to international students. Lecturers were always available for students whenever they needed them. Secondly, I enjoyed the clarity of the programme, which provided the full package needed for our different career aspirations, be it in clinics, research, industry, and many others. Third, I enjoyed the cultural and professional diversity among students, where we could share our different experiences and learn from each other at the same time. The fourth aspect I enjoyed was the location of BCI, which is in the centre of London and ideal for someone who wants to visit and enjoy all the wonderful aspects of the city."

Eric Rucogoza, Analyst in Sustainable Health Financing Program, Clinton Health Access Initiative - CHAI, Rwanda (MSc Cancer and Therapeutics, 2020)

350+
research staff

160+
graduate students



One of four partners in the **Cancer Research UK City of London Centre**, a world-class hub dedicated to cancer biotherapeutics



Learn more

About Barts
Cancer Institute

Blizard Institute



The Blizard Institute's world-class biomedical research and education integrates basic science, clinical and translational research activity within a unique and award-winning facility. Our research and commitment to high-quality training and education aims to cultivate ideas to deliver the previously unthinkable and create a lasting real-world impact.

In 1785, Sir William Blizard founded England's first hospital-based medical School at The London Hospital in Whitechapel, offering a new kind of medical education combining theory and clinical skills. The Blizard Institute was established more than two centuries later, with Sir William's commitment to teaching and research continuing to inspire what we do today.

Our diverse programmes are taught by academics who are leaders in fields such as genomics, cell biology, translational immunology, neuroscience and trauma.

Career progression

Fifteen months after graduation, 96 per cent of our alumni are in highly skilled employment or graduate study. Many go onto PhDs or work for healthcare providers in the UK and abroad (Graduate Outcomes Survey 2019/20).

Our research

Our research addresses the health needs of our local population, while delivering new treatments on a global scale. This research spans basic, laboratory-based science, such as identifying novel treatments, through to applied health research.

Professor Graham Foster's research shaped national and international guidelines on hepatitis C treatment and screening – making significant progress in eliminating the virus in the UK and elsewhere.

Professor Karim Brohi and his colleagues developed new treatment approaches for trauma patients with critical bleeding that reduced death rates by nearly 30 per cent at The Royal London Hospital, one of the busiest major trauma centres in Europe. The damage control resuscitation strategy and major haemorrhage protocol (MHP, or 'Code Red') were adopted as national standards by the NHS.

Professors Jonathan Grigg and Chris Griffiths played a pivotal role in making London's air healthier. Their work made clear that the damage caused by air pollution is even greater in children and was instrumental in influencing the introduction of the London Ultra Low Emission Zone – and the decline of diesel vehicle sales.

Our academics

Dr Libby Thomas is a clinical academic with a portfolio career that encompasses her passion for emergency medicine and medical education. She is an Emergency Medicine Consultant and a Senior Lecturer in Emergency Medicine. She leads on student experience, integrating simulation and human factors into distance learning modules and the summer school, and enjoys pushing her fellow faculty to improve the way education is delivered through distance learning.

Libby is also currently working for Health Education England as the education lead for the London Transformation and Learning Collaborative, an NHS programme enabling workforce and training innovations to be maximised and adapted for areas of urgent need.



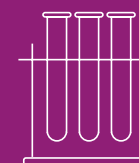
Our alumni

"I am the founder of Smileworks, one of the largest independent dental practices in the UK. I finished my MSc in Aesthetic Medicine in 2016 and it has been transformational. I already did a lot of aesthetics before, but it inspired me to become a comprehensive practitioner. I learnt things I wouldn't have otherwise, to the huge benefit of my patients. And I was able to build knowledge through my postgraduate degree whilst working in practice, which was ideal."

Dr MJ Rowland-Warmann
(MSc Aesthetic Medicine, 2016)
Dentist and Founder of Smileworks

96%

of alumni in highly skilled employment or graduate study (Graduate Outcomes Survey 2019/20)



9,000m² Blizard building provides world-class teaching and research facilities including open-plan laboratories, office space and lecture theatre



Learn more

About Blizard Institute

Dentistry



Based in The Royal London Dental Hospital in East London, the Institute of Dentistry offers cutting-edge technology, a superb education and first-class research facilities.

Our range of MSc programmes develops your practical skills and knowledge, preparing you for your chosen career. During your MSc, you'll be taught by academics at the forefront of their field, and involved in international research collaborations with some of the world's leading companies. This keeps our modules up to date and relevant to industry. Whichever programme you decide to undertake, you will gain an advanced and thorough understanding of your chosen field.

Career progression

Most of our graduates are working as dental practitioners in the NHS and private sectors, in the UK and abroad, while some go on to further study, teaching and research roles (Graduate Outcomes Survey 2019/20).

Our research

Research by our academics has been instrumental in a number of innovations in dentistry from improving the oral health of vulnerable children in the UK. Notable achievements include the development of a smart toothpaste that "knows" what your teeth need, establishing a pioneering one-stop clinic for Behçet's syndrome that has transformed patient care, and helping thousands sleep better.

For example, Professor Farida Fortune's research has helped reveal the mechanisms behind Behçet's syndrome and driven the creation of three centres in the UK including one at The Royal London Hospital, which acts as a 'one stop clinic' for patients. Average diagnosis time has fallen from 14 years to just one and the centres have transformed patient care and improved clinical outcomes.

Since 2013, more than 11,000 patients have benefited from Professor Ama Johal's life-changing treatment for Obstructive Sleep Apnoea (OSA). His modified Sleepwell device improved results for 70% of patients, and he has also had a significant impact on dental education and training.

Our academics

Dr Vanessa Muirhead is a Clinical Senior Lecturer in Dental Public Health and Programme Director for the MSc/PGDip/PGCert Dental Public Health, Leadership and Policy. Her research has shown that there is a significant issue with the oral health of vulnerable children. This led to the 'Let's Talk about Teeth' project, working with foster carers to understand the oral health of these children and how well-equipped foster carers were to support them. As a result, the researchers made a series of recommendations that were implemented in all London boroughs. In addition, a booklet for foster carers is used in a number of local authorities across England.



Our alumni

"I believe that Minimally Invasive Dentistry is the future of dentistry. Having an evidence-based dental practice has helped me hone my skills. I enhanced preventive, operative, and clinical practice management skills during the course. We had a great team of students and teachers at Queen Mary and the entire learning process was extraordinary."

Dr Radhika Goel,
(MSc Minimally Invasive Dentistry, 2021)
Dental practitioner

#14

in the world for
Dentistry (QS World
University Rankings by
Subject 2022)

#1

in the UK for **research
environment** for
Dentistry (REF 2021)



Learn more

About the Institute of
Dentistry



Watch

Our facilities tour

Institute of Health Sciences Education

Focusing primarily on medical education, the Institute of Health Sciences Education (IHSE) forms an integral part of Queen Mary's Faculty of Medicine and Dentistry.

The Institute is home to leaders in curriculum design, delivery and assessment. We house world-class facilities at our campuses across London and our partner organisations where we teach our students; both those looking to enter the medical profession and those wanting to develop their careers. We currently offer postgraduate taught programmes in the areas of:

- Clinical Education
- Physician Associate Studies
- Prehospital Medicine

Career progression

93 per cent of graduates from all our medicine postgraduate taught programmes across the Faculty were in highly skilled employment or further study 15 months after graduation. Most of our graduates are working as doctors or physician associates in hospitals and general practices in the NHS in the

UK, while some are working overseas (Graduate Outcomes Survey 2019/20).

Our research

Our academics' research focuses on clinical and medical education, covering:

- Developing teaching for junior doctors
- Applying clinical skills to students and trainees that require additional support
- Enhancing medical students' leadership skills through student-selected components
- Improving general practitioners' knowledge through government education campaigns
- Using paramedics to teach future doctors prehospital medicine skills
- Investigating the facilitator's role in London's Air Ambulance's simulation moulage training.

During the Covid-19 pandemic, the Institute adapted much of its work to meet the challenges faced by healthcare professionals. Dr Graham Easton's team in the Clinical and Communication Skills Unit worked with actors to help medical students learn about video and telephone consultations, which became the norm in general practice during the crisis. To further support our healthcare professionals and

students, we launched a podcast about clinical communication covering topics such as communicating in PPE protective kit (including sign language), sharing best practice across teams and countries, breaking bad news, and video and telephone consultations in primary care.

Our academics

Dr Arunthathi Mahendran was recently appointed IHSE Director. She completed her specialist surgical training in London and New York. Her PhD in Education was awarded Best Doctoral Thesis (2018) by the British Educational Research Association. Her research, grounded in the philosophy of education, examines practices of "thinking, seeing and doing" to better understand how students and trainees learn and develop in complex clinical environments. This research has informed the design and delivery of medical and surgical education and she has frequently advised educational institutions on the subject in the UK, Europe and beyond. Most recently, she was the recipient of the President and Principal's Prize for Excellence in Education in 2021.



Our alumni

"Although our postgraduate training is only two years compared to a traditional five-year undergraduate degree, it is incredibly intense and highly clinical. It was a massive leap as someone who has just qualified, but I have learnt so much from that time. The things that they teach you, you see it happening for yourself."

What really attracted me to this profession was the flexibility and the work-life balance that it offers whilst allowing you to practice medicine. Also, I have always been passionate about teaching and being a Physician Associate does allow me to fulfil that dream further."

Shayan Ashjaei, Neurology Physician Associate
(MSc Physician Associate Studies, 2019)

#16

Joint 16th in the world for research citations in medicine (citations per paper) (QS World University Rankings by Subject 2022)

#9

in the UK for medicine (The Times and Sunday Times Good University Guide 2022)



Learn more

About the Institute of Health Sciences Education

William Harvey Research Institute

The William Harvey Research Institute (WHRI) is the UK university sector's largest pharmacological institute. We are committed to high-quality research and offer programmes where you will be taught by world-leading experts in the fields of cardiovascular, endocrine and inflammation research.

In addition, we achieve international excellence in critical care and perioperative medicine research. We aim to combine talents from different disciplines such as genomics, cell biology, and pharmacology, with translational bench-to-patient studies and large-scale clinical trials.

Career progression

94 per cent of our graduates are in highly skilled jobs and further study 15 months after graduation. Our graduates progress to a range of careers in the medical, health and related sectors, while some work for police services, universities or in the wider life sciences industry. A number also go on to further study (Graduate Outcomes Survey 2019/20).

Our research

The 100,000 Genomes Project has provided life-changing diagnoses for patients and their families. Since it started in 2013, the project has helped more than 36,000 NHS patients with rare diseases. Almost a quarter of these patients now have new diagnoses and can, therefore, receive appropriate and tailored medical treatment. The project's success played a significant role in the UK genomics strategy development, which promises to revolutionise healthcare in the 21st century.

WHRI research has enabled fast, accurate genetic testing for adrenal insufficiency, which has turned Queen Mary into a global referral centre for the condition. In collaboration with clinician scientists from around the world, the work of Professor Lou Metterell's research team based at the Centre for Endocrinology has enabled the development of a genetic diagnostic panel, now in clinical use, that allows patients to receive swift, effective treatment and genetic counselling for this potentially life-threatening disorder.

Our academics

Sir Mark Caulfield is Professor of Clinical Pharmacology and an NHS consultant. His research has been independently rated among the top 10 scientific discoveries in his field, and he has won numerous awards. He raised £25m toward the William Harvey Heart Centre and was the academic leader that created the Barts Heart Centre, bringing three hospitals together to create the UK's largest heart centre. His main research focuses on cardiovascular genomics and cardiovascular clinical trials. Mark was Chief Scientist for Genomics England until July 2021 and was awarded a knighthood in 2019 for his leadership of the 100,000 Genomes Project. He is now CEO of Barts Life Sciences, driving the development of a world-leading life sciences campus at Whitechapel focusing on digital precision healthcare, and Vice-Principal (Health) for the Faculty of Medicine and Dentistry.



Our alumni

"I enjoyed almost all my MSc modules but after learning about the key aspects of drug development such as toxicology and data management, I was able to filter down the area that excited me - Drug Discovery and Pre-Clinical Research and Development.

Queen Mary has and continues to contribute to shaping the person I am today. My journey here has not only given me extraordinary opportunities but has also given me life-long friends.

My studies, but especially my PhD journey at Queen Mary, have played a massive role in helping me grow as a person both personally and professionally. Working and sharing lab space with a diverse group of people, from professors to undergraduate students, has been a unique setting where I got to learn that it's best to express and not repress."

Vidicha Chunilal, current PhD student
(BSc Pharmaceutical Chemistry, 2018 and MSc Clinical Drug Development, 2019)



One of the largest pharmacological research institutes in Europe

94%

of our graduates are in highly skilled jobs and further study 15 months after graduation (Graduate Outcomes Survey 2019/20)



Learn more

About the William Harvey Research Institute

Wolfson Institute of Population Health

The Wolfson Institute of Population Health is a world-class grouping of scientists and educators in applied health sciences, including public and global health, health services and primary care research, clinical trials, health policy and economics, health data science, behavioural and social sciences, epidemiology, biostatistics, translational and implementation science.

The Institute delivers research and education to drive improvements in the health of local, national and global populations, identifying the causes and methods of prevention of physical and mental health conditions that lead to poor quality of life and premature death. Our work has had an unprecedented impact on lives across the world. We offer postgraduate degrees in psychology and mental health, and global and public health.

Career progression

94 per cent of our graduates were in employment or study fifteen months after graduation. Most are

working as medical practitioners, psychologists, counsellors, in the NHS, social care and the wider healthcare sectors, for charities and non-governmental organisations, and in government, while some have gone on to further study (Graduate Outcomes Survey 2019/20).

Our research

Our researchers explore the causes of poor health and health inequalities, how to detect disease earlier, and design novel interventions and evaluate measures aimed at improving the health and quality of life of individuals and populations, locally in East London, nationally, and across the globe.

Research led by Professor Jack Cuzick confirmed that HPV vaccine could 'nearly eliminate' cervical cancer. He co-designed trials that confirmed the safety and efficacy of the vaccine, which led to worldwide changes to vaccination programmes. His team's research also influenced the decision to make human papilloma virus (HPV) screening the first test for cervical cancer. This played a pivotal role in changing clinical guidelines and national screening programmes around the world. These moves will provide millions of women with earlier diagnosis and

protection while also sparing many women from unnecessary treatments and anxiety.

Dr Doreen Montag's research took her to Peru's Amazonian region, examining how vulnerable indigenous communities are to Covid-19 as high prices, shortages of supplies, and a history of mistreatment of indigenous people have led to mistrust in hospital treatments.

Our academics

Dr Mark Freestone works mainly in the field of forensic mental health, conducting research into the efficacy of treatments for offenders. A Fellow of the Alan Turing Institute, he has consulted on forensic mental health issues for NHS England and recently the television series Killing Eve.

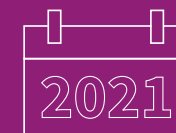
Dr Jonathan Kennedy won an award in the inaugural Global Challenges Teaching Awards, a programme aimed at increasing access to global learning for students on both sides of the Atlantic. This year's cohort of six scholars from the US and UK will focus on pandemics, climate change and racial justice.



Our work

"The work of our researchers and educators has had a significant impact on lives across the world. We provide integrated teaching and training opportunities delivered by leaders in the field. By sharing knowledge and pushing the boundaries of research, we will continue to advance population health and preventive medicine on a global scale.

Professor Fiona Walter, Director of the Wolfson Institute of Population Health and Professor of Primary Care Cancer Research



2021 is the year that the new Wolfson Institute of Population Health was created from the merger of the Institute of Population Health Sciences and Wolfson Institute of Preventive Medicine

94%

of our graduates are in employment or further study 15 months after graduation (Graduate Outcomes Survey 2019/20)



Learn more

About the Wolfson Institute of Population Health

Postgraduate Research Programmes

Join a thriving, curiosity-driven community of over 1,800 postgraduate research students. Supervised by academics who are world leaders in their fields, they span a range of thesis topics and shape our understanding of some of the biggest challenges facing the world.

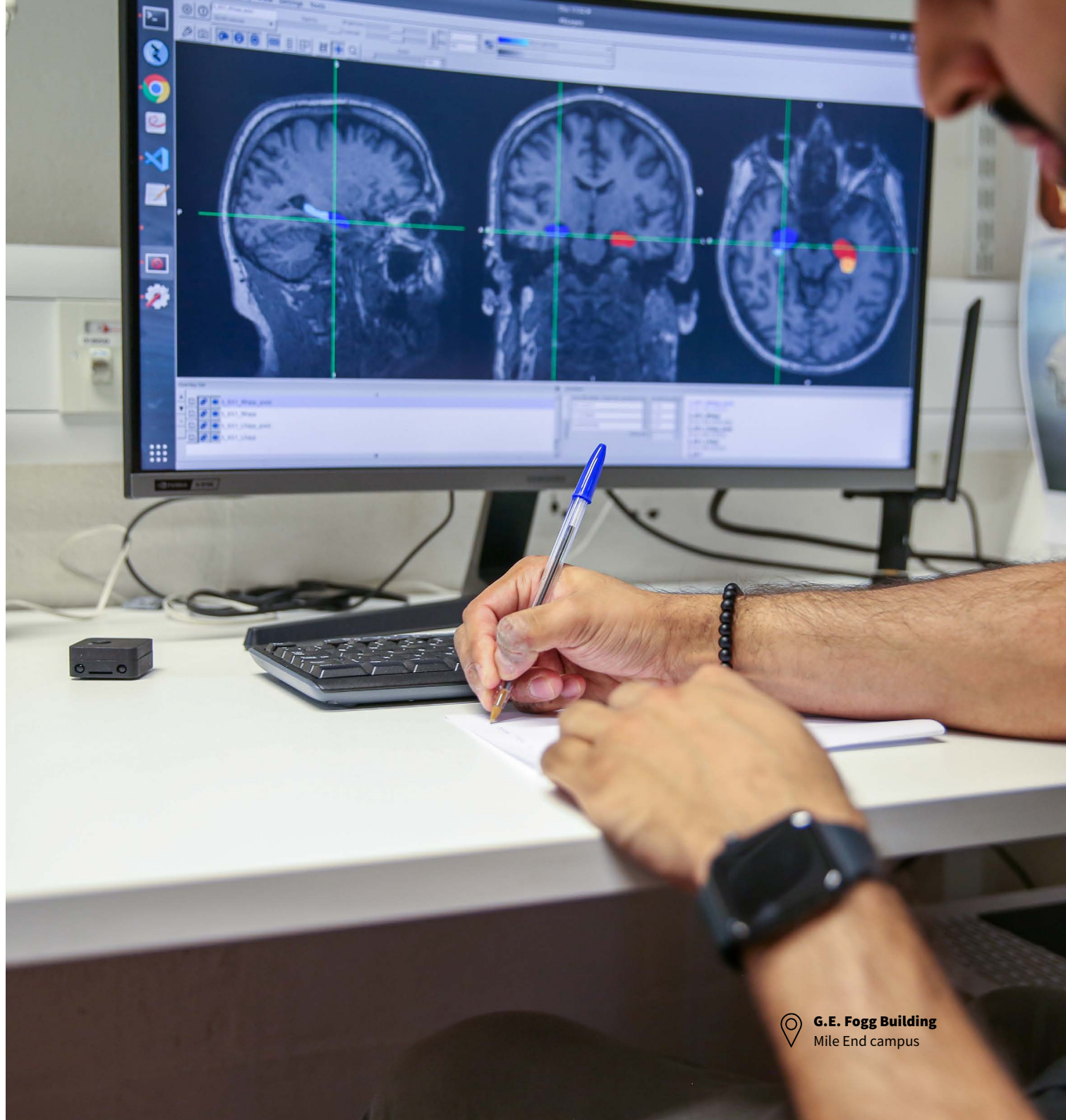
Information on services

As a Queen Mary postgraduate research student, you'll become a member of our Doctoral College. The Doctoral College looks after you through each stage of your postgraduate research degree, from offering application guidance through to the development of your research and beyond the submission of your thesis.

Research and reputation

Queen Mary is a Russell Group University with a global reputation for research excellence. It's the perfect place to work alongside world-class academics to foster change, address global challenges and improve lives.

Queen Mary ranked seventh in the UK for quality of research in the most recent Research Excellence Framework (REF) 2021, and cemented its place in the top nine per cent of universities worldwide in the QS World Rankings 2023.



List of our degree programmes

Biological Sciences	84
Business and Management	84
Chemical Sciences	85
Computing, Data Science and Electronic Engineering	85
Dentistry	86
Drama	87
Economics and Finance	88
Engineering	89
English	89
Geography and Environmental Science	89
History	90
Language, Linguistics and Film	90
Law	91
Materials	93
Mathematics	93
Medicine and Health Science	94
Physics and Astronomy	97
Politics and International Relations	98

Degree programmes



For more information on these programmes including fees, start dates and duration, please visit qmul.ac.uk/coursefinder

Course listing key:

FT = full time, PT = part time, VM = variable mode

Biological Sciences

Artificial Intelligence in the Biosciences

Qualification MSc	Study mode FT	Campus Mile End
----------------------	------------------	--------------------

Bioinformatics

Qualification MSc	Study mode FT, PT	Campus Mile End
----------------------	----------------------	--------------------

Biodiversity and Conservation

Qualification MSc	Study mode FT	Campus Mile End and Kew Gardens
----------------------	------------------	------------------------------------

Plant and Fungal Taxonomy, Diversity and Conservation

Qualification MSc	Study mode FT	Campus Mile End and Kew Gardens
----------------------	------------------	------------------------------------

Business and Management

Accounting and Finance

Qualification MSc	Study mode FT	Campus Mile End
----------------------	------------------	--------------------

Accounting and Management

Qualification MSc	Study mode FT	Campus Mile End
----------------------	------------------	--------------------

Blockchain in Business and Society

Qualification MSc	Study mode FT	Campus Mile End
----------------------	------------------	--------------------

Business Analytics

Qualification MSc	Study mode FT	Campus Mile End
----------------------	------------------	--------------------

Business and Management

Qualification MRes	Study mode FT	Campus Mile End
-----------------------	------------------	--------------------

Creative Industries and Arts Organisation

Qualification MA	Study mode FT	Campus Mile End
---------------------	------------------	--------------------

Entrepreneurship and Innovation

Qualification MSc	Study mode FT	Campus Mile End
----------------------	------------------	--------------------

Heritage Management (with HRP)

Qualification MA	Study mode FT, PT	Campus Mile End
---------------------	----------------------	--------------------

International Business

Qualification MSc	Study mode FT	Campus Mile End
----------------------	------------------	--------------------

International Financial Management

Qualification MSc	Study mode FT	Campus Mile End
----------------------	------------------	--------------------

International Human Resource Management

Qualification MSc	Study mode FT, PT	Campus Mile End
----------------------	----------------------	--------------------

Management

Qualification MSc	Study mode FT	Campus Mile End
----------------------	------------------	--------------------

Management (January start)

Qualification MSc	Study mode FT	Campus Mile End
----------------------	------------------	--------------------

Management with Integrated Pre-Masters

Qualification MSc	Study mode FT	Campus Mile End
----------------------	------------------	--------------------

Management with Integrated Pre-Masters (January Start)

Qualification MSc	Study mode FT	Campus Mile End
----------------------	------------------	--------------------

Marketing

Qualification MSc	Study mode FT	Campus Mile End
----------------------	------------------	--------------------

Marketing (January start)

Qualification MSc	Study mode FT	Campus Mile End
----------------------	------------------	--------------------

Chemical Sciences

Chemical Research

Qualification MSc	Study mode FT, PT	Campus Mile End
----------------------	----------------------	--------------------

Computing, Data Science and Electronic Engineering

Advanced Electronic and Electrical Engineering

Qualification MSc	Study mode FT, PT	Campus Mile End
----------------------	----------------------	--------------------

Artificial Intelligence

Qualification MSc	Study mode FT, PT	Campus Mile End
----------------------	----------------------	--------------------

Big Data Science

Qualification MSc	Study mode FT, PT	Campus Mile End
----------------------	----------------------	--------------------

Computer Games

Qualification MSc	Study mode FT	Campus Mile End
----------------------	------------------	--------------------

Computer Science

Qualification MSc	Study mode FT, PT	Campus Mile End
----------------------	----------------------	--------------------

Computer Science by Research

Qualification MSc	Study mode FT, PT	Campus Mile End
----------------------	----------------------	--------------------

Computing and Information Systems (Conversion programme)

Qualification MSc	Study mode FT, PT	Campus Mile End
----------------------	----------------------	--------------------

Data Science and Artificial Intelligence (Conversion programme)

Qualification MSc	Study mode FT	Campus Mile End
----------------------	------------------	--------------------

Digital and Technology Solutions Specialist (Apprenticeship)

Qualification MSc	Study mode PT	Campus Mile End
----------------------	------------------	--------------------

Electronic Engineering by Research

Qualification MSc	Study mode FT, PT	Campus Mile End
----------------------	----------------------	--------------------

Internet of Things and Future Networks*

Qualification MSc	Study mode FT, PT	Campus Mile End
----------------------	----------------------	--------------------

Machine Learning for Visual Data Analytics

Qualification MSc	Study mode FT, PT	Campus Mile End
----------------------	----------------------	--------------------

Sound and Music Computing

Qualification MSc	Study mode FT, PT	Campus Mile End
----------------------	----------------------	--------------------

Dentistry

Clinical Oral Microbiology

Qualification DClinDent	Study mode FT	Campus Whitechapel
----------------------------	------------------	-----------------------

Craniofacial Trauma Reconstruction

Qualification MSc	Study mode FT	Campus Distance Learning
----------------------	------------------	-----------------------------

Dental Materials

Qualification MSc	Study mode FT	Campus Whitechapel
----------------------	------------------	-----------------------

Dental Public Health, Policy and Leadership

Qualification MSc, PGCert, PGDip	Study mode PT	Campus Distance Learning
-------------------------------------	------------------	-----------------------------

* Subject to approval

Dental Science for Clinical Practice

Qualification MSc	Study mode FT	Campus Whitechapel
----------------------	------------------	-----------------------

Dental Technology

Qualification MSc	Study mode FT	Campus Whitechapel
----------------------	------------------	-----------------------

Endodontic Practice

Qualification MSc	Study mode PT	Campus Whitechapel
----------------------	------------------	-----------------------

Endodontics

Qualification DClinDent	Study mode FT	Campus Whitechapel
----------------------------	------------------	-----------------------

Experimental Oral Pathology (Oral Sciences)

Qualification MSc	Study mode FT	Campus Whitechapel
----------------------	------------------	-----------------------

Minimally Invasive Dentistry

Qualification DClinDent, MSc	Study mode FT, PT	Campus Whitechapel
---------------------------------	----------------------	-----------------------

Oral Biology

Qualification MSc	Study mode FT	Campus Whitechapel
----------------------	------------------	-----------------------

Oral Medicine

Qualification DClinDent	Study mode FT	Campus Whitechapel
----------------------------	------------------	-----------------------

Oral Surgery

Qualification DClinDent	Study mode FT	Campus Whitechapel
----------------------------	------------------	-----------------------

Orthodontics

Qualification DClinDent	Study mode FT	Campus Whitechapel
----------------------------	------------------	-----------------------

Paediatric Dentistry

Qualification DClinDent	Study mode FT	Campus Whitechapel
----------------------------	------------------	-----------------------

Periodontology

Qualification DClinDent	Study mode FT	Campus Whitechapel
----------------------------	------------------	-----------------------

Prosthodontics

Qualification DClinDent	Study mode FT	Campus Whitechapel
----------------------------	------------------	-----------------------

Drama

Theatre and Performance

Qualification MA	Study mode FT, PT	Campus Mile End
---------------------	----------------------	--------------------

Economics and Finance		
Banking and Finance		
Qualification MSc	Study mode FT	Campus Mile End
Banking and Finance (January start)		
Qualification MSc	Study mode FT	Campus Mile End
Behavioural Finance		
Qualification MSc	Study mode FT	Campus Mile End
Behavioural Finance (CFA Pathway)		
Qualification MSc	Study mode FT	Campus Mile End
Corporate Finance		
Qualification MSc	Study mode FT	Campus Mile End
Economics		
Qualification MRes, MSc	Study mode FT	Campus Mile End
Finance		
Qualification MRes, MSc	Study mode FT	Campus Mile End
Finance (CFA Pathway)		
Qualification MSc	Study mode FT	Campus Mile End
Finance and Machine Learning		
Qualification MSc	Study mode FT	Campus Mile End
Investment Banking		
Qualification MSc	Study mode FT	Campus Mile End
Investment Banking (CFA Pathway)		
Qualification MSc	Study mode FT	Campus Mile End
Investment and Finance		
Qualification MSc	Study mode FT, PT	Campus Mile End
Investment and Finance (CFA Pathway)		
Qualification MSc	Study mode FT	Campus Mile End
Mental Health Economics		
Qualification MSc	Study mode FT, PT	Campus Mile End
Wealth Management		
Qualification MSc	Study mode FT	Campus Mile End

Engineering		
Advanced Aeronautical Engineering and Space Systems		
Qualification MSc	Study mode FT	Campus Mile End
Advanced Mechanical Engineering		
Qualification MSc	Study mode FT	Campus Mile End
Advanced Robotics		
Qualification MSc	Study mode FT	Campus Mile End
Aerospace Structures and Materials		
Qualification MSc	Study mode FT	Campus Mile End
Biomedical Engineering		
Qualification MSc	Study mode FT	Campus Mile End
Biomedical Engineering (conversion programme)		
Qualification MSc	Study mode FT	Campus Mile End
Biomedical Engineering with Biomaterials and Tissue Engineering		
Qualification MSc	Study mode FT	Campus Mile End
Computational Engineering		
Qualification MSc	Study mode FT	Campus Mile End
Data Centric Systems Engineering		
Qualification MSc	Study mode FT	Campus Mile End
Sustainable Energy Systems		
Qualification MSc	Study mode FT	Campus Mile End
English		
Creative Writing		
Qualification MA	Study mode FT, PT	Campus Mile End
English Literature		
Qualification MA	Study mode FT, PT	Campus Mile End
Geography and Environmental Science		
Development and Global Health		
Qualification MA	Study mode FT, PT	Campus Mile End
Development and International Business		
Qualification MSc	Study mode FT, PT	Campus Mile End

Environmental Science by Research

Qualification	Study mode	Campus
MSc	FT, PT	Mile End

Geography

Qualification	Study mode	Campus
MRes	FT, PT	Mile End

Global Development

Qualification	Study mode	Campus
MA	FT, PT	Mile End

Water and Environmental Management

Qualification	Study mode	Campus
MSc	FT, PT	Mile End

History

History

Qualification	Study mode	Campus
MA	FT, PT	Mile End

History of Political Thought and Intellectual History

Qualification	Study mode	Campus
MA	FT, PT	Mile End

Urban History and Culture

Qualification	Study mode	Campus
MA	FT, PT	University of London Institute in Paris

Languages, Linguistics and Film

Applied Linguistics

Qualification	Study mode	Campus
MA	FT	Mile End

English Language Teaching

Qualification	Study mode	Campus
MA, PGCert, PGDip	FT	Mile End

English Language Teaching (January start)

Qualification	Study mode	Campus
PGCert	FT	Mile End

English Language Teaching with Integrated Pre-Masters

Qualification	Study mode	Campus
MA	FT	Mile End

Film (pathways: Theory/Directing Fiction/Documentary Practice)

Qualification	Study mode	Campus
MA	FT	Mile End

Language Teaching

Qualification	Study mode	Campus
MA, PGCert, PGDip	FT	Mile End

Language Teaching (January start)

Qualification	Study mode	Campus
PGCert	FT	Mile End

Linguistics

Qualification	Study mode	Campus
MA, MRes	FT, PT	Mile End

Law

Art, Business and Law

Qualification	Study mode	Campus
LLM	FT, PT	Lincoln's Inn Fields

Banking and Finance Law

Qualification	Study mode	Campus
LLM	FT, PT	Lincoln's Inn Fields

Commercial Law (London/Singapore)

Qualification	Study mode	Campus
Double LLM	FT	Lincoln's Inn Fields and SMU

Commercial and Corporate Law

Qualification	Study mode	Campus
LLM	FT, PT	Lincoln's Inn Fields

Comparative and International Dispute Resolution

Qualification	Study mode	Campus
LLM	FT, PT	Lincoln's Inn Fields

Competition Law

Qualification	Study mode	Campus
LLM	FT, PT	Lincoln's Inn Fields

Criminal Justice

Qualification	Study mode	Campus
LLM, MRes	FT, PT	Lincoln's Inn Fields

Energy and Climate Change Law

Qualification	Study mode	Campus
LLM	FT, PT	Lincoln's Inn Fields

Environmental Law

Qualification	Study mode	Campus
LLM	FT, PT	Lincoln's Inn Fields

European Law

Qualification	Study mode	Campus
LLM	FT, PT	Lincoln's Inn Fields

Global MBA

Qualification	Study mode	Campus
LLM	FT, PT	Distance Learning

Human Rights Law

Qualification	Study mode	Campus
LLM, MRes	FT, PT	Lincoln's Inn Fields

Insurance Law

Qualification	Study mode	Campus
LLM	FT, PT	Lincoln's Inn Fields

Intellectual Property Law		
Qualification LLM	Study mode FT, PT	Campus Lincoln's Inn Fields
Intellectual Property Law (IP Reg)		
Qualification PGCert	Study mode FT	Campus Lincoln's Inn Fields
Intellectual Property, Data and Information Law		
Qualification MSc	Study mode FT, PT	Campus Lincoln's Inn Fields
International Business Law		
Qualification LLM	Study mode FT, PT	Campus Lincoln's Inn Fields
International Dispute Resolution (September/May start)		
Qualification LLM, PGCert, PGDip	Study mode FT, PT	Campus Distance Learning
International Economic Law		
Qualification LLM, MRes	Study mode FT, PT	Campus Lincoln's Inn Fields
International Shipping Law		
Qualification LLM	Study mode FT, PT	Campus Lincoln's Inn Fields
International Tax Law		
Qualification LLM	Study mode FT, PT	Campus Lincoln's Inn Fields
Law and Economics		
Qualification LLM, PGCert, PGDip	Study mode FT, PT	Campus Lincoln's Inn Fields
Law and Finance		
Qualification MSc, PGCert, PGDip	Study mode FT, PT	Campus Lincoln's Inn Fields
Laws		
Qualification LLM, PGCert, PGDip	Study mode FT, PT	Campus Lincoln's Inn Fields
Laws (Flexible)		
Qualification LLM, PGCert, PGDip	Study mode FT, VM	Campus Lincoln's Inn Fields, Mile End
Laws (Flexible) (January start)		
Qualification LLM, PGDip	Study mode VM	Campus Lincoln's Inn Fields, Mile End
Laws (Paris)*		
Qualification LLM	Study mode FT, PT	Campus Paris
Laws (Paris) (January start)*		
Qualification LLM	Study mode FT, PT	Campus Paris

Management of Intellectual Property		
Qualification MSc	Study mode FT, PT	Campus Lincoln's Inn Fields
Public International Law		
Qualification LLM, MRes	Study mode FT, PT	Campus Lincoln's Inn Fields
Regulation and Compliance		
Qualification LLM, MSc	Study mode FT, PT, VM	Campus Lincoln's Inn Fields
Sorbonne Law School - Queen Mary University of London		
Qualification Double LLM	Study mode FT	Campus Paris
Tax Law		
Qualification LLM	Study mode FT	Campus Lincoln's Inn Fields
Technology, Media and Telecommunications Law		
Qualification LLM, PGCert, PGDip	Study mode FT, PT, VM	Campus Distance Learning, Lincoln's Inn Fields
Technology, Media and Telecommunications Law (January start)		
Qualification LLM, PGCert, PGDip	Study mode FT, PT, VM	Campus Distance Learning
Trade Mark Law and Practice		
Qualification PGCert	Study mode PT	Campus Lincoln's Inn Fields
Materials		
Advanced Materials Science and Engineering		
Qualification MSc	Study mode FT	Campus Mile End
Advanced Polymer Science and Engineering		
Qualification MSc	Study mode FT	Campus Mile End
Materials Research		
Qualification MRes	Study mode FT	Campus Mile End
Mathematics		
Applied Data Analytics		
Qualification MSc	Study mode PT	Campus Distance Learning
Data Analytics		
Qualification MSc	Study mode FT, PT	Campus Mile End
Financial Mathematics		
Qualification MSc	Study mode FT, PT	Campus Mile End

Mathematics

Qualification MSc	Study mode FT, PT	Campus Mile End
-----------------------------	-----------------------------	---------------------------

Medicine and Health Sciences

Aesthetic Medicine

Qualification MSc, PGCert, PGDip	Study mode PT	Campus Distance Learning
--	-------------------------	------------------------------------

Biomedical Sciences

Qualification MSc	Study mode FT	Campus Mile End, Charterhouse Square
-----------------------------	-------------------------	--

Biomedical Science (Medical Microbiology)

Qualification MSc	Study mode FT, PT	Campus Whitechapel
-----------------------------	-----------------------------	------------------------------

Cancer and Clinical Oncology

Qualification MSc, PGDip	Study mode FT, PT	Campus Chartherhouse Square, Distance Learning
------------------------------------	-----------------------------	--

Cancer and Molecular and Cellular Biology

Qualification MSc, PGDip	Study mode FT, PT	Campus Chartherhouse Square, Distance Learning
------------------------------------	-----------------------------	--

Cancer and Molecular Pathology and Genomics

Qualification MSc, PGDip	Study mode FT, PT	Campus Chartherhouse Square, Distance Learning
------------------------------------	-----------------------------	--

Cancer and Therapeutics

Qualification MSc, PGDip	Study mode FT, PT	Campus Chartherhouse Square, Distance Learning
------------------------------------	-----------------------------	--

Cancer Genomics and Data Science

Qualification MSc	Study mode FT, PT	Campus Chartherhouse Square, Distance Learning
-----------------------------	-----------------------------	--

Cardiac and Vascular Medicine

Qualification MRes	Study mode FT	Campus Chartherhouse Square
------------------------------	-------------------------	---------------------------------------

Clinical Dermatology

Qualification PGDip	Study mode PT	Campus Distance Learning
-------------------------------	-------------------------	------------------------------------

Clinical Drug Development

Qualification MSc, PGDip	Study mode FT, PT, VM	Campus Chartherhouse Square, Distance Learning
------------------------------------	---------------------------------	--

Clinical Education (Degree Apprenticeship)

Qualification PGCert	Study mode FT	Campus Whitechapel
--------------------------------	-------------------------	------------------------------

Clinical Endocrinology

Qualification MSc, PGDip	Study mode FT, PT	Campus Chartherhouse Square, Distance Learning
------------------------------------	-----------------------------	--

Clinical Microbiology

Qualification MSc, PGDip	Study mode PT	Campus Whitechapel
------------------------------------	-------------------------	------------------------------

Clinical Research

Qualification MRes, PGCert, PGDip	Study mode PT	Campus Chartherhouse Square
---	-------------------------	---------------------------------------

Clinical Research (January start)

Qualification MRes, PGCert, PGDip	Study mode PT	Campus Chartherhouse Square
---	-------------------------	---------------------------------------

Clinical Science (Infection Sciences)

Qualification MSc	Study mode PT	Campus Whitechapel
-----------------------------	-------------------------	------------------------------

Creative Arts and Mental Health

Qualification MSc, PGDip	Study mode FT, PT	Campus Mile End
------------------------------------	-----------------------------	---------------------------

Critical Care

Qualification MSc, PGCert, PGDip	Study mode FT, PT, VM	Campus Chartherhouse Square, Distance Learning
--	---------------------------------	--

Education for Clinical Contexts

Qualification MA, PGCert	Study mode FT, PT	Campus Whitechapel, Distance Learning
------------------------------------	-----------------------------	---

Education for Clinical Contexts (January start)

Qualification MA, PGCert	Study mode FT, PT	Campus Whitechapel, Distance Learning
------------------------------------	-----------------------------	---

Emergency and Resuscitation Medicine

Qualification MA, PGCert	Study mode PT	Campus Distance Learning
------------------------------------	-------------------------	------------------------------------

Endocrinology and Diabetes

Qualification MSc, PGDip	Study mode PT	Campus Distance Learning
------------------------------------	-------------------------	------------------------------------

Forensic Medical Sciences

Qualification MSc	Study mode FT	Campus Chartherhouse Square
-----------------------------	-------------------------	---------------------------------------

Forensic Psychology and Mental Health

Qualification MSc	Study mode FT	Campus Whitechapel, Distance Learning
-----------------------------	-------------------------	---

Gastroenterology

Qualification MSc, PGDip	Study mode FT, PT	Campus Whitechapel, Distance Learning
------------------------------------	-----------------------------	---

Genomic Medicine

Qualification MSc, PGDip, PGCert	Study mode FT, PT	Campus Chartherhouse Square, Distance Learning
--	-----------------------------	--

Genomic Medicine (January start)

Qualification MSc, PGDip, PGCert	Study mode FT, PT	Campus Chartherhouse Square, Distance Learning
--	-----------------------------	--

Global Public Health

Qualification MSc, PGDip, PGCert	Study mode PT	Campus Distance Learning
--	-------------------------	------------------------------------

Global Public Health and Policy

Qualification MSc, MRes	Study mode FT, PT	Campus Whitechapel
-----------------------------------	-----------------------------	------------------------------

Health Care Research Methods

Qualification MSc, PGDip	Study mode FT, PT, VM	Campus Charterhouse Square, Distance Learning
------------------------------------	---------------------------------	---

Health Data in Practice

Qualification MRes	Study mode FT	Campus Whitechapel
------------------------------	-------------------------	------------------------------

Laparoscopic Surgery and Surgical Skills

Qualification MSc	Study mode FT, PT	Campus Charterhouse Square, Distance Learning
-----------------------------	-----------------------------	---

Laparoscopic Surgical Skills

Qualification PGCert, PGDip	Study mode PT	Campus Distance Learning
---------------------------------------	-------------------------	------------------------------------

Mental Health: Cultural Psychology and Psychiatry

Qualification MRes, MSc, PGDip	Study mode FT, PT	Campus Whitechapel, Distance Learning
--	-----------------------------	---

Mental Health: Psychological Therapies

Qualification MRes, MSc, PGDip	Study mode FT, PT	Campus Whitechapel, Distance Learning
--	-----------------------------	---

Molecular and Genomic Medicine

Qualification Double MSc	Study mode FT, PT	Campus IMU (Malaysia) and Distance Learning
------------------------------------	-----------------------------	---

Neuromodulation and Pain Management

Qualification PGCert	Study mode PT	Campus Distance Learning
--------------------------------	-------------------------	------------------------------------

Neuroscience and Translational Medicine

Qualification MSc, PGCert, PGDip	Study mode FT, PT	Campus Whitechapel
--	-----------------------------	------------------------------

Orthopaedic Trauma Science

Qualification MSc	Study mode PT	Campus Distance Learning
-----------------------------	-------------------------	------------------------------------

Paediatric Emergency Medicine

Qualification MSc, PGCert, PGDip	Study mode PT	Campus Distance Learning
--	-------------------------	------------------------------------

Psychology: Mental Health Sciences

Qualification MSc	Study mode FT	Campus Mile End and Whitechapel
-----------------------------	-------------------------	---

Physician Associate Studies (January start)

Qualification MSc	Study mode FT	Campus Whitechapel
-----------------------------	-------------------------	------------------------------

Physician Associate Studies (Degree Apprenticeship)(January start)

Qualification MSc	Study mode PT	Campus Whitechapel
-----------------------------	-------------------------	------------------------------

Podiatric Sports Medicine

Qualification MSc, PGCert, PGDip	Study mode FT, PT, VM	Campus Mile End
--	---------------------------------	---------------------------

Prehospital Medicine

Qualification MSc	Study mode PT	Campus Whitechapel
-----------------------------	-------------------------	------------------------------

Public Mental Health

Qualification MSc	Study mode FT, PT	Campus Whitechapel
-----------------------------	-----------------------------	------------------------------

Regenerative Medicine

Qualification MSc	Study mode FT	Campus Whitechapel
-----------------------------	-------------------------	------------------------------

Sports and Exercise Medicine - Medic

Qualification MSc, PGDip	Study mode FT, PT, VM	Campus Mile End
------------------------------------	---------------------------------	---------------------------

Sports and Exercise Medicine - Physio

Qualification MSc, PGDip	Study mode FT, PT, VM	Campus Mile End
------------------------------------	---------------------------------	---------------------------

Sports and Exercise Medicine - Physio (MACP accredited)

Qualification MSc, PGDip	Study mode FT, PT	Campus Mile End
------------------------------------	-----------------------------	---------------------------

Surgical Skills (General Surgery/Gynaecology) (Malta)

Qualification MSc	Study mode PT	Campus Malta and Distance Learning
-----------------------------	-------------------------	--

Translational Immunology

Qualification MRes	Study mode FT	Campus Charterhouse Square
------------------------------	-------------------------	--------------------------------------

Trauma Sciences

Qualification MSc	Study mode PT	Campus Distance Learning
-----------------------------	-------------------------	------------------------------------

Trauma Sciences (Military and Humanitarian)

Qualification MSc	Study mode PT	Campus Distance Learning
-----------------------------	-------------------------	------------------------------------

Tuberculosis

Qualification PGCert	Study mode PT	Campus Distance Learning
--------------------------------	-------------------------	------------------------------------

Physics and Astronomy

Astrophysics

Qualification MSc	Study mode FT, PT	Campus Mile End
-----------------------------	-----------------------------	---------------------------

Astronomy and Astrophysics

Qualification PGCert	Study mode PT	Campus Mile End
--------------------------------	-------------------------	---------------------------

Physics: Condensed Matter Physics

Qualification MSc	Study mode FT	Campus Mile End
-----------------------------	-------------------------	---------------------------

Physics (EuroMasters)

Qualification MSc	Study mode FT	Campus Mile End
----------------------	------------------	--------------------

Physics: Particle Physics

Qualification MSc	Study mode FT	Campus Mile End
----------------------	------------------	--------------------

Theoretical Physics

Qualification MSc	Study mode FT	Campus Mile End
----------------------	------------------	--------------------

Politics and International Relations

International Business and Politics

Qualification MSc	Study mode FT, PT	Campus Mile End
----------------------	----------------------	--------------------

International Public Policy

Qualification MSc, PGCert, PGDip	Study mode FT, PT	Campus Mile End, Distance Learning
-------------------------------------	----------------------	---------------------------------------

International Relations

Qualification MA, MRes, PGCert, PGDip	Study mode FT, PT	Campus Mile End, Distance Learning
--	----------------------	---------------------------------------

International Relations (Paris)

Qualification MA, PGDip	Study mode FT	Campus Paris
----------------------------	------------------	-----------------

Public Policy

Qualification MRes, MSc	Study mode FT, PT	Campus Mile End
----------------------------	----------------------	--------------------



Queens' Clock Tower
Mile End campus



Terms and Conditions

1. Rules and regulations

The offer of, and acceptance of, a place at Queen Mary University of London ("Queen Mary") is made on the understanding that you undertake to observe the terms and conditions of our Academic Regulations and related policies. These cover, among other things, payment of fees, attendance at classes, submission of work, attendance at examinations, student discipline, complaints procedure, freedom of speech and equal opportunities policies. To read the Academic Regulations and related policies, visit arcs.qmul.ac.uk/policy

2. Changes to our programmes

We will aim to deliver your programme so that it closely matches the way in which it has been described to you by Queen Mary, especially at the point that you accept your offer. However, it is important to understand that there are circumstances in which we may subsequently change aspects of your programme. Our programmes are delivered within a dynamic, academic community by staff who are actively engaged in research. In this context, we might make changes so that our students can learn from the latest academic research. We also value student feedback and provide regular opportunities for our students to comment on the content of their programme. We may therefore alter your programme in response to this dialogue with current students. Other circumstances which can lead to changes include: staff changes, which can lead to new modules being offered, modules being withdrawn, or a change to who teaches the programme; changes made in response to new requirements from external professional or statutory bodies; or changes to the way in which universities are funded, which might lead to changes in the availability of some student services, for example. In the unlikely event that

we discontinue a programme of study, or change it significantly before it begins, we will inform applicants holding an offer of a place at the earliest opportunity and will endeavour to offer a suitable alternative programme at Queen Mary.

We will also ensure that these changes are reflected on our website as soon as possible.

3. Liability for damage to person or property

Queen Mary does not accept any responsibility or liability for any loss and/or damage to:

- (a) your property, students and/or visitors' property and/or
- (b) any transfer of computer viruses to your equipment, students and/or visitors' equipment unless caused by Queen Mary's negligence.
- (c) Neither does Queen Mary accept any responsibility or liability for personal injury to you, students and/or visitors caused by their misuse or unauthorised use of Queen Mary equipment, while they are on Queen Mary premises, or engaged in Queen Mary activities.

4.1 Queen Mary will receive personal data from you in various ways when you submit your application for a programme at Queen Mary. This may include special category or criminal convictions data under data protection legislation (the General Data Protection Regulations (Regulation (EU) 2016/679) as implemented by the Data Protection Act 2018 (as amended)).

4.2 Your personal data (including any special category personal data) will be held by Queen Mary and may be used by Queen Mary to enable it to fulfil its responsibilities to you.

5.1 Accuracy of information in this prospectus

Queen Mary has made reasonable efforts to ensure that the information provided in this prospectus is both helpful and accurate at the time of going to print. However, this information is subject to change over time. For this reason, it is important that you check the website for the most up-to-date information (qmul.ac.uk) or contact us using the details contained within the document.

5.2 Applicants are strongly advised to check the course finder on the Queen Mary website for up-to-date entry requirements before submitting their application.



6. This prospectus was manufactured using UPM Fine Offset sourced from an ISO 14001 certified mill, where the pulp was bleached using an Elemental Chlorine Free (EFC) process. The materials followed a Chain-of-Custody scheme, made of materials from well-managed, FSC®-certified forests and other controlled sources.

Accredited by the



Learn more

About up-to-date entry requirements



Read

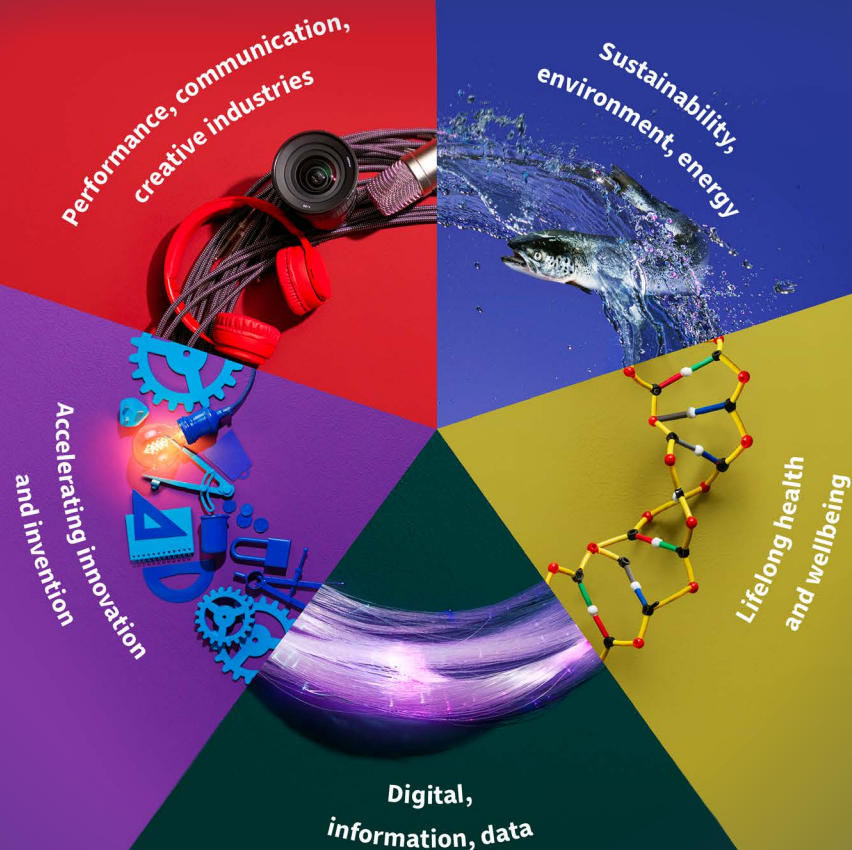
Full terms and conditions

Diverse perspectives, unique expertise. Our research delivers real-world impact.

Queen Mary's ethos as a leading, research-intensive university is built on a simple belief: when we embrace diversity of thought, opinion and ideas, we can achieve the previously unthinkable and take the world to new places.

Our Research Highways bring this ethos to life. Combining expertise across disciplines, this is research designed to tackle some of society's biggest challenges, grasp new opportunities and transform lives across the globe.

**Find out how our research is changing lives.
Explore our research highways.**



Find out more at our Open Events

26 October 2022 23 March 2023

26 May 2023



Book your place at qmul.ac.uk/postgraduate/openday

 @officialqmul

 Queen Mary University of London

 @QMUL

 @QMUL

 QMULOfficial



Queen Mary
University of London

**RUSSELL
GROUP**