



School of Engineering and Materials Science
24 March 2021 - Industrial Liaison Forum #3
Start time – 17:30 (UK time)

ILF#3 – Alumni, Benefactors and Industrial Advisory Board Members
Prof James Busfield & Prof Hazel Screen

Industrial Liaison Forum #3

- Introduction - Prof James Busfield
- SEMS News Update - Prof Hazel Screen, Head of School
- Collaboration Opportunities - Prof James Busfield, Director of Impact
- Business Development Office Introduction - Dr Joanne Chamberlain
- Volunteering Opportunities & QM Network - Phillip Davey, Alumni Team
- Careers and Enterprise Support and QMentors - Dr Yalini Nathan, Careers Team
- **Question & Answer Session**

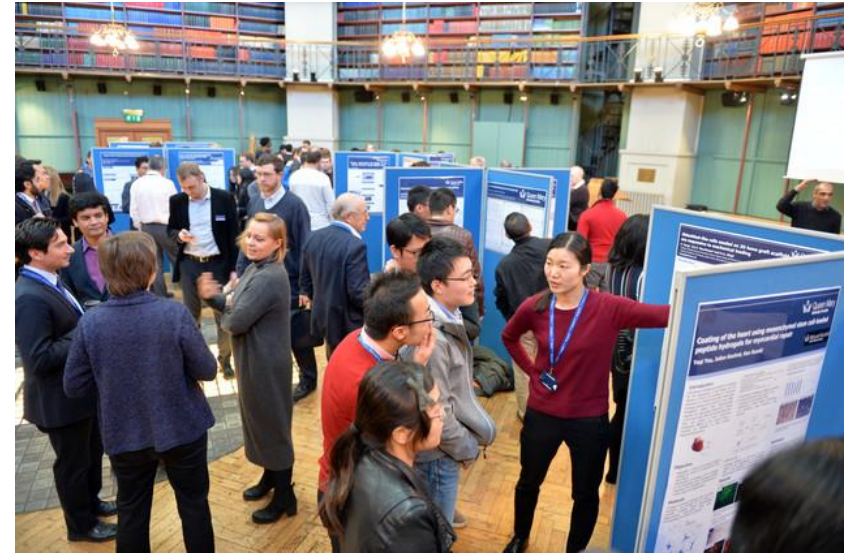
Ask questions in the Q&A box

We will track your interest in potential future collaboration using polls

ILF Schedule for 2021

- ILF#1 - PhD poster showcase 21st January
 - ILF#2 - Industrial Placements 24th February
 - **ILF#3 - Alumni, IAB & Benefactors 24th March**
 - ILF#4 - Third Year Project Showcase 21st April
 - ILF#5 - MEng Project Showcase 28th April
-
- ILF#6 - 9 Russell Binion's PhD Symposium 17-20th May
 - ILF#10 - iBSc (Medical) Project Showcase 1st June
 - ILF#11 - MSc Project Showcase (date TBC)

If you wish to participate in future events then register here: www.sems.qmul.ac.uk/ilf/schedule





School of Engineering and Materials Science

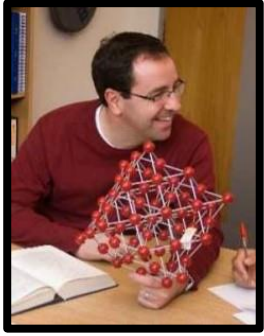
24 March 2021 - Industrial Liaison Forum #3

ILF#3 – Alumni, Benefactors and Industrial Advisory Board Members
SEMS News Update - Prof Hazel Screen



- Queen Mary University of London (QMUL) has heritage dating back to 1785 when it opened as the UK's first medical school
- We are a Russell Group university, operating across five campuses in London and at sites across Europe and Asia
- We are ranked 12th in the UK and 110th in the world by the Times Higher Education (THE) World University Rankings.
- We have 9 Nobel Prize winners amongst our former staff and students
- We have over 27,000 students and 4,600 members of staff
- Our students come from 160 different countries with 50 per cent of our students from overseas
- We lead the way in inclusivity among Russell Group universities: of our London undergraduate students, more than 90 per cent are from state schools; 69 per cent are BAME and 57 per cent are first into higher education

Industry Engagement Champions in SEMS



Director - James Busfield
j.busfield@qmul.ac.uk



Aerospace - Sergey Karabasov
s.karabasov@qmul.ac.uk



Biomedical - Thomas Iskratsch
t.iskratsch@qmul.ac.uk



Chemical - Petra Szilágyi
p.szilagyi@qmul.ac.uk



Materials - Oliver Fenwick
o.fenwick@qmul.ac.uk



Mechanical - Andrew Buchan
a.buchan@qmul.ac.uk



Robotics - Ketao Zhang
ketao.zhang@qmul.ac.uk



JEI - Andrew Spowage
a.spowage@qmul.ac.uk

Collaborative Student Projects

Benefits to the company

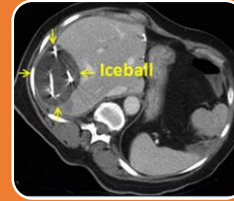
- Cost-effective way doing a project
- Ability to trial potential employees
- A creative, highly skilled and fresh approach
- Involvement and access to cutting edge facilities

Costs – Students should have consumables provided and expenses paid for company visits

IP - Standard agreements regarding any IP developed while involved in an industry project

NDA – Standard NDAs can be arranged. All projects need to be examinable (and be seen by the examiners)

Contact the most relevant Industrial Engagement Champion to express your interest



In Module Delivery



3rd Year Individual Projects (300 hour)



4th Year Group Projects (3000 hour)



iBSc / MSc Individual Projects (600 hour)

In Programme Work Placements

Placement of between 7 to 14 months

Supported by Industrial Experience Managers

More than 100 students go on a work placement

Our significant partners include:

- Service Now (27 placements since 2011)
- Rolls Royce (24)
- Airbus
- Rail Delivery Group
- Arconic
- GlaxoSmithKline
- Siemens
- IBM
- Fidelity

Contact Crawford Blagden (c.blagden@qmul.ac.uk)



Karan Mehta (3) Crawford Blagden Osman Goreish (4)

SEMS IE Manager

PhD Student Funding and Work Placements

Collaborative Open PhD Research:

- Fully funded PhD project for 3.5 years from £120,326
- Competitive part funded PhD project for 3 years from £76,217
- Competitive QMUL allocated studentship for 4 years from £49,000
- CASE and iCASE opportunities

Research sponsors often take PhD research students on placement (and often hire them after graduation)



Contact the most relevant Industrial Engagement Champion to express your interest

ILF6-9 Russell Binions Symposium is going public in 2021

ILF	Date	Which Group	5pm Keynote Speaker
ILF#6	17 th May	Materials Eng PhD students	Dr Joe Briscoe - Scaling up and scaling down: maximising solar energy conversion through large-area synthesis and novel nanocomposite materials
ILF#7	18 th May	Engineering PhD students	Prof Andrew Livingston - Travels in Nanoland: Membranes, Molecules and Money
ILF#8	19 th May	Biomedical Eng PhD Students	Prof Andrew Lewis - Innovating new medical devices
ILF#9	20 th May	Chemical Eng PhD Students	Dr Ana Sobrido - Engineering the next generation of electrode materials for energy conversion and storage devices

QMUL Degree Apprenticeship Programmes since 2015



BSc in Digital and Technology Solutions Professional (48 Months)

Employer Partners: ARUP, BBC, Bloomberg, Broadridge, Experian, GSK, Global Radio, Goji Investments, Goldman Sachs, Morgan Stanley, IBM, John Lewis, KPMG, Memiah, PlayStation, Sapphire Systems and Xantura.



MSc in Digital and Technology Solutions Specialist (24 Months)

Employer Partners: British Airways, Tata Consultancy Services, IBM, GSK, CGI, Bart's Health Trust, Costain, Youview, Basildon Local Authority, Siemens and BBC.



BSc in Chartered Manager (Social Change) (48 Months)

Employer Partners: Royal Society of the Arts, Queen Mary Students Union, Scouts Association, Young Gamblers and Gamers Education Trust, Alzheimer's Society, WaterAid, Mind, National Council Voluntary Organisations, Princes Trust, Action for Children, Samaritans, Action on Hearing Loss and Crisis.



PGCert in Clinical Education (15 Months)

Employer Partners: Barts NHS Trust, Homerton NHS Trust, South London & Maudsley NHS Trust

London City Institute of Technology

QMUL's £28M Institute of Technology will support local and sub-regional engineering pathways into high-skilled jobs, through:

Newham
College

- T Levels
- Level 4-5 technical qualifications
- Transport engineering apprenticeships and higher apprenticeships

QMUL

- Level 6-7 degree apprenticeships
- Degree programmes with a year in industry
- Commercial Research & Development
- Continuing Professional Development (CPD) opportunities



Anchor Employer: **Port of London Authority**

Other Partners: Siemens, London Borough of Newham, Royal Docks, Bosch, TFL, AECOM, Network Rail, Livetts & Bennett's Barges, Maritime Skills Alliance, WYG

Contact James Busfield (j.busfield@qmul.ac.uk) if you want to hear more about this opportunity

Planned Degree Apprenticeship Programmes



Masters in Economics Apprenticeship Programme (24 months)

Entry Points: September 2021

Employer Partners: Department for Business, Energy & Industrial Strategy, HM Treasury, Department for Work and Pensions, Department for Education, OFCOM



Data Scientist (BSc)

<https://www.instituteforapprenticeships.org/apprenticeship-standards/data-scientist-integrated-degree/>



Aerospace Engineer (BEng)

<https://www.instituteforapprenticeships.org/apprenticeship-standards/aerospace-engineer-degree/>



Systems Engineer (MSc)

<https://www.instituteforapprenticeships.org/apprenticeship-standards/systems-engineer-degree/>

Visiting Academics

- Prof Andrew Lewis - Owen Mumford
- Prof Keizo Akutagawa - Aston Martin F1
- Prof Phillip Kennedy - ex 3M



Contact the most relevant Industrial Engagement Champion to express your interest

Industrial Advisory Board Membership

Benefits to your organisation:

- Raise awareness of your business amongst staff and the students in SEMS
- Ensure SEMS graduates have the essential skills required as future employees
- Support EPSRC / Innovate UK grant funding for collaborative research projects
- Networking opportunities with other companies in SEMS network
- Access to a large student population to undertake a wide range of projects
- Access to the equipment and facilities available in SEMS

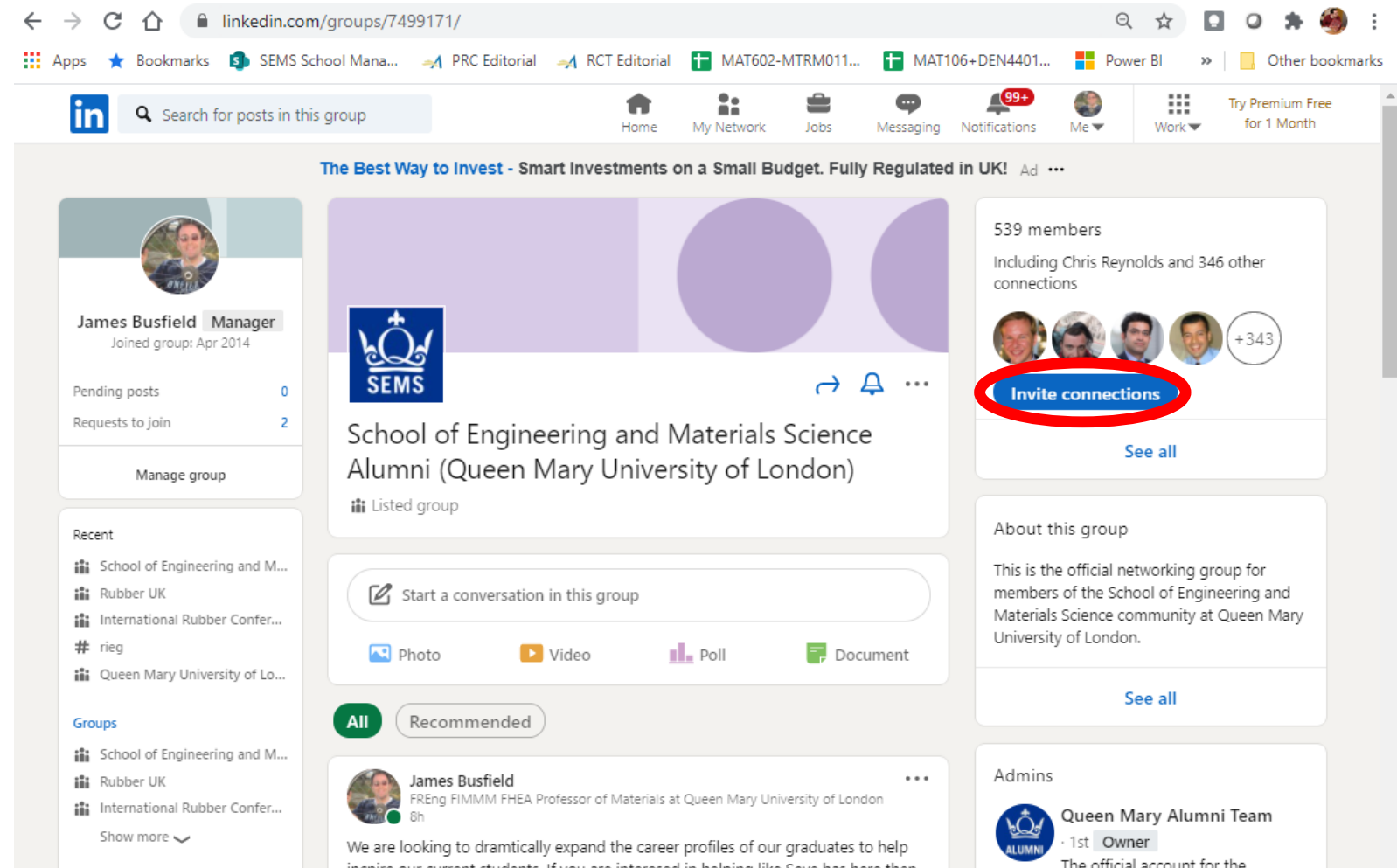
Membership (50 organisations in total) including:

Airbus	Altair Engineering	Anglian Water
Archipelago Technology	Arconic	Aston Martin F1
BAe	Baxter Healthcare	Birla Carbon
BP	BSI Healthcare	De Puy
Drax Power Station	Ford	Foster + Partners
Haydale	Intuitive Surgical	Jaguar Land Rover
Lucideon	MatOrtho	MOD
NAMSA	NGF	Ocado
Owen Mumford	Pfizer	Podaris
RB	RJM International	Rolls Royce
Schlumberger	Shadow Robot Company	Sugru
Sunamp Ltd	Unilever	Weir

Contact the most relevant Industrial Engagement Champion to express your interest

LinkedIn Group for SEMS Alumni Engagement

- Alumni can join the SEMS Alumni Group on LinkedIn
- We plan to use this group to help grow our alumni network
- Once connected you can then invite other connections
- Scroll down your list of connections and tick on anyone you know that is not already a member



Special Events in 2021

- 2021 is the 50th anniversary of our first ever graduating cohort of materials students
- We will also graduate nearly 250 materials students for the first time from our JEl campus in Xian, China
- Planning for a physical reunion on campus before the end of the year to celebrate both events



Business Development Support S&E Faculty

24 March 2021

ILF#3 - Alumni and Industrial Advisory Board

Dr Joanne Chamberlain - Business Development Team S&E

Business Development Support @ QMUL

There are three staff members available to support academic staff and their industry partners with industry-funded PhD studentships, large collaborative bids, strategic partnerships, Innovate UK (IUK) proposals and Knowledge Transfer Partnerships (KTPs):

Business Development Team (S&E)

Joanne Chamberlain - Senior Partnerships Manager - Large bids
j.chamberlain@qmul.ac.uk

Mangesh Gharfalkar – Business Development Manager - IUK & ISCF
m.gharfalkar@qmul.ac.uk

Ali Najimi – Business Development Manager – KTPs
a.najimi@qmul.ac.uk



Collaborate with us

Webpage at:

<https://www.qmul.ac.uk/research/collaborate-with-us/>

Collaborate with us

At Queen Mary we work with businesses, public sector and voluntary organisations around the world to shape policy, drive innovation and create tangible impact.





Volunteering @ QMUL

24 March 2021

ILF#3 - Alumni and Industrial Advisory Board

Phillip Davey - Alumni Volunteer Coordinator

Volunteering at Queen Mary University of London

Phillip Davey
Alumni Volunteer Coordinator
Queen Mary University of London

qmul.network

www.qmul.ac.uk/alumni/volunteering

p.davey@qmul.ac.uk

linkedin.com/in/phillipdavey



Volunteering at Queen Mary University of London

In 2019/20 **744 alumni volunteers** contributed to **1,115 known volunteer activities**, across Queen Mary, including **37 SEMS alumni**.

Mentoring – both formal one to one mentoring such as **QMentoring** programme or virtually via the Queen Mary Network – join now via <https://qmul.network>

Careers related events for current students and recent graduates

Recruitment events such as **Offer-holder** and **Open Day** events, inspiring the next generation of SEMS students

Share your alumni story online via our **blog** and **social media channels**

<https://www.qmul.ac.uk/alumni/volunteering/>





Careers and Enterprise @ QMUL

24 March 2021

ILF#3 - Alumni and Industrial Advisory Board

Dr Yalini Nathan, Careers Team

Recent graduates:

**Did you know you can access our support
for two years after graduation?**

**Whether you are looking to find work or apply for further study,
we can help!**

More info: <https://www.qmul.ac.uk/careers/our-support/for-graduates/>



Queen Mary
University of London